

# If the (brake) pedal is to the metal, you could be in trouble

When you're driving, the steering wheel, accelerator pedal and brakes literally are an extension of your body.

The vehicle can become so much a part of you that, without thinking about it, you assume it will do what you tell it. Or, like an injured arm or foot, you may subconsciously "favour" that limb. In driving, a motorist may develop the habit of using the steering wheel to correct for a slight pull to one side when applying the brakes.

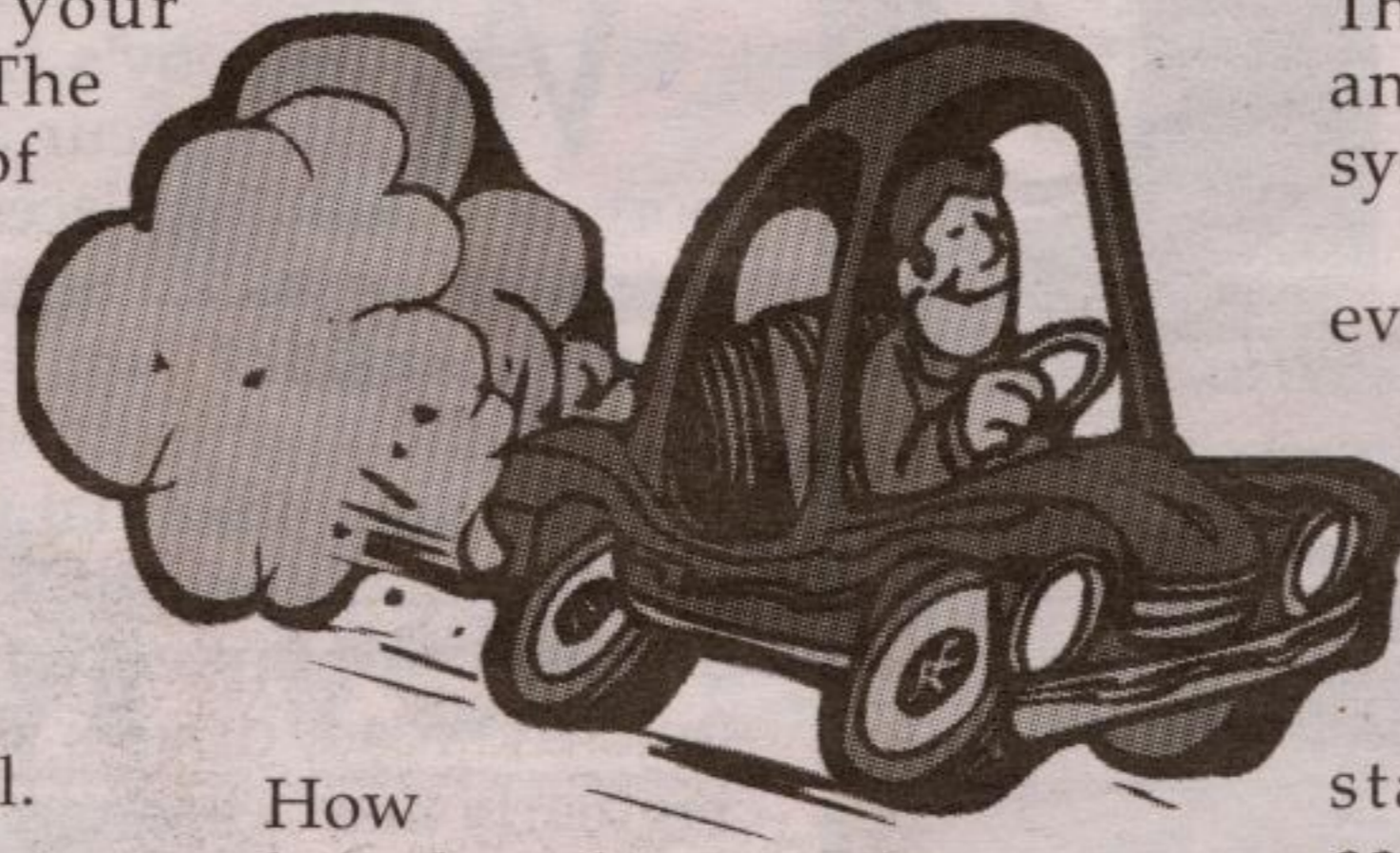
Because we spend so much time behind the wheel, it's easy to become accustomed to minor braking discrepancies until, seemingly overnight, they're no longer minor. The next time you're driving, suggests the Car Care Council,

give the condition of your brakes some thought. The Council lists six signs of deteriorating braking performance that warrant an expert opinion. These are:

1. Pulling to one side.
2. Noisy brakes.
3. Pulsating brakes.
4. Soft or spongy pedal.
5. Fading pedal.
6. Low pedal.

• **Pulling To One Side:** This indicates more braking action from one side than the other. Depending upon the direction of the pull and whether it's only when you apply the brakes, this can be caused by a variety of malfunctions. Note the symptoms and see your technician.

• **Noisy Brakes:** Is it a scraping sound or a screech?



How long has this been going on? Does it happen only on a damp morning? Again, this is one for your trusted technician.

• **Pulsating Brakes:** When, instead of a smooth stop, you feel pulsating or a shuddering sensation, it could be due to warped brake rotors or drums. This is a common malady that should be diagnosed and corrected by an expert.

• **Soft Or Spongy Pedal:**

This indicates low brake fluid and/or air in the hydraulic system. Have it checked.

• **Fading Pedal:** Have you ever felt the pedal fade away, dropping closer and closer to the floor as you hold your foot on the brakes for an extended period of time? If it's when you're standing still, it could be caused by a faulty master cylinder or a leak in the hydraulic system. If it happens when you're descending a long hill, your brake drums or rotors may be getting hot. Note the circumstances and report them to your service technician.

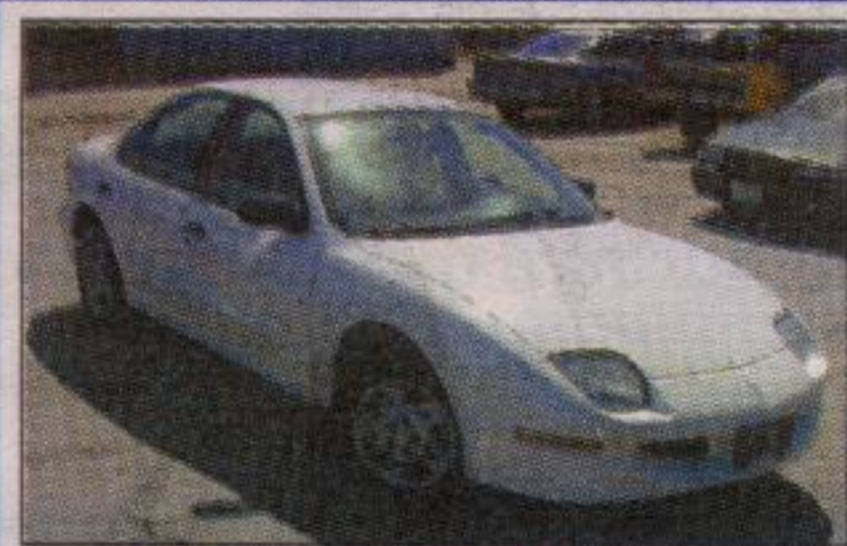
• **Low Pedal:** You're most likely to find this to develop gradually, generally due to wear of the pads or linings. An annual inspection of your

vehicle, including the removal of all four wheels for close scrutiny of the brakes, can catch this condition before it is serious. Excessively worn pads or linings not only are dangerous, they can add considerably to your repair bill.

Because your brakes, tires and steering system continuously interact, the diagnosis and correction of a braking problem can be more complex than all of the above. This is why the Car Care Council emphasizes the importance of consulting with a technician when you first become suspicious of your vehicle's handling characteristics, and giving your vehicle a comprehensive inspection periodically to catch and prevent trouble before it's serious.

—Car Care Council

## NORVAL CLASSIC CARS

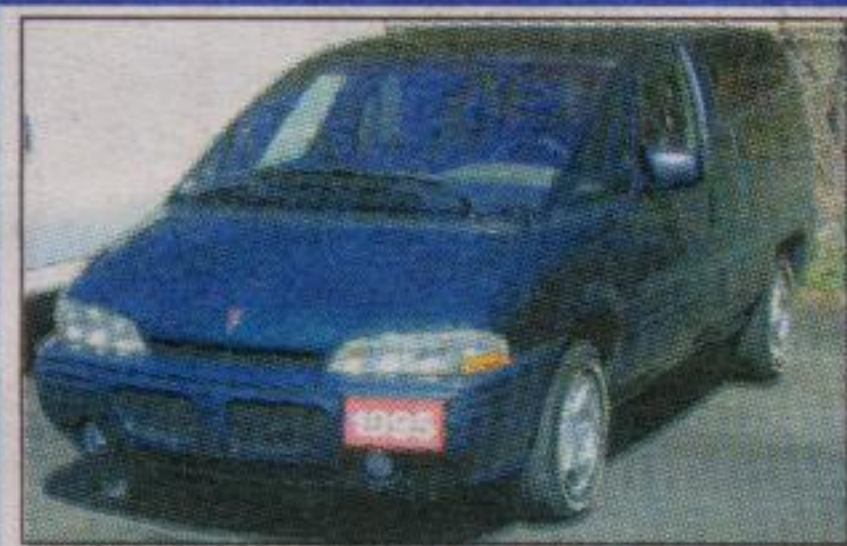


Great 2nd Car

### 95 SUNFIRE

115 k, 2.2L, 4 Dr, Auto with air

**\$6795**



Inexpensive Van

### 95 PONTIAC TRANSPORT

138k, V6, PS, PB, AC, CC, Tilt, Power door

**\$7995**



Well Maintained

### 95 TOYOTA COROLLA

1.8 L, 5 Spd., Well maintained with AC

**\$6495**



Family Sedan

### 93 MERCURY SABLE

160k, V6, Auto, Loaded with options

**\$3995**



Splash Package

### 97 FORD RANGER XL

115K, V6, 5 Spd., Flareside, One owner

**\$8900**

Includes Wynn's Powertrain Warranty for 12 months or 12,000 km

**905-702-1494**

On Hwy. #7 just east of Winston Churchill Blvd. in beautiful Norval.

Hours: 10 a.m. to 7 p.m., Fri. & Sat. to 6 p.m.

401 DIXIE



DERMAC



NORTH END



# Great Tent Sale

## 3 Convenient Locations



- ✓ All Vehicles Sale Priced!
- ✓ All Incentive Programs Apply!
- ✓ Top Trade-In Dollars at Each Location!
- ✓ Act Now! Low Financing Low Lease Rates

### 401-DIXIE NISSAN

5500 DIXIE RD. In The 401-Dixie Auto Mall

(905) **238-5500**  
TOR. LINE (416) 798-7942  
Visit us at: [www.401dixienissan.com](http://www.401dixienissan.com)



### DERMAC NISSAN

Bovard Dr. just West of Hwy. 10 Brampton, Ontario

(905) **459-1600**  
TOLL FREE 1-877-298-4454  
TORONTO LINE (416) 674-2120



### NORTH END NISSAN

610 Martin Street, Milton

(905) **878-4137**

