

WAL★MART®

Specialty Oils For Specialty Equipment Including Farm Machinery



- Anti-wear Hydraulic 32, 46 or 68
- Universal Tractor Fluid
- Diesel Engine Oil SAE 15W40

20 L

Your Choice
28⁹⁷ each
every day



Diesel Engine Oil SAE 30 or 40

20 L

Your Choice
29⁹⁷ each
every day

Coleman® Powermate®

Manufacturer's 1-year Warranty



**6-Peak-HP
27 Gallon
Compressor**
• Maintenance free
• Oil-free pump
• Operates on 115V household current
#1029032.
398⁸⁶ each
every day

Owner Operator 15W40 Diesel Engine Oil



20 L
39⁹⁷ each
every day

Gear Oil 80W90 GL-5



20 L
29⁹⁷ each
every day

Automatic Transmission Fluid



20 L
28⁹⁷ each
every day

ALL BATTERY PRICES ARE WITH TRADE.



Lawn & Garden Snowmobile Utility Vehicles

"Lawn & Garden/Utility Series"

- 12 - month warranty
- 6 - month free replacement

PART NO.	CCA	CA	EXCHANGE PRICE*
UI-200N	160	200	29.97
UI-300N	230	300	39.97
UIDC-275N	215	275	49.97



Agricultural Highway Transport Heavy Duty Truck

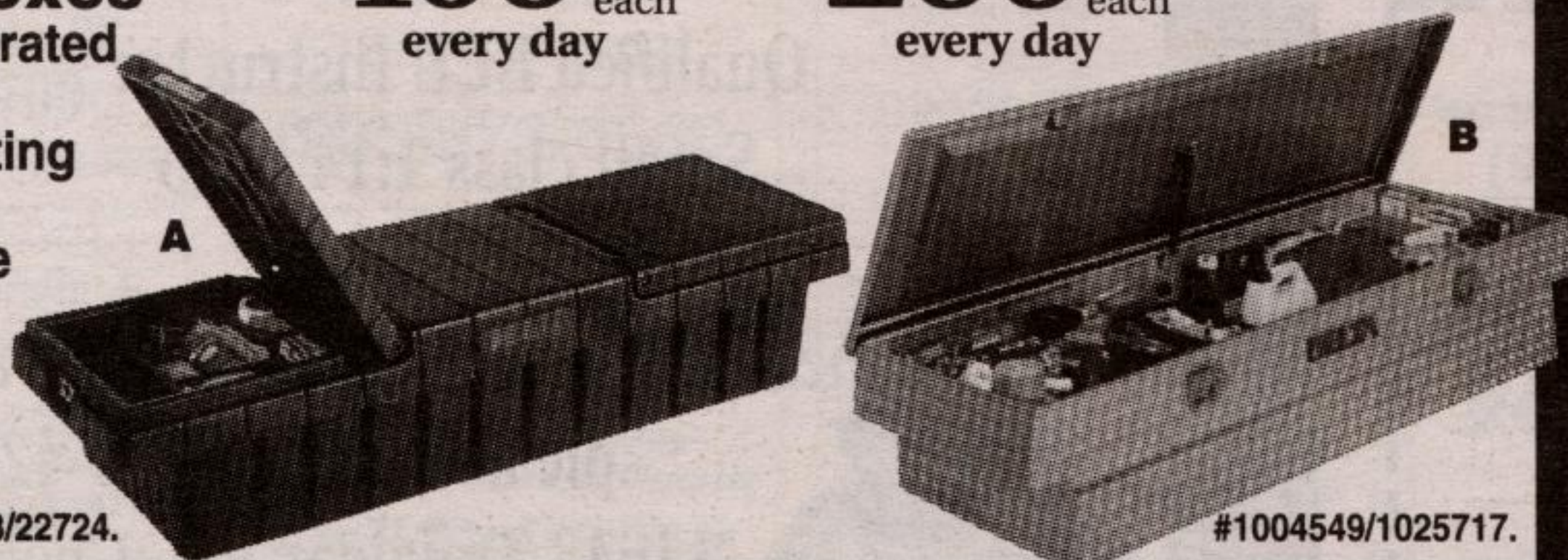
Eveready "Commercial" Battery

- 30 - month warranty
- 12 - month free replacement

PART NO.	CCA	CA	EXCHANGE PRICE*
1-575V (6V)	575	N/A	56.97
31S-950V	950	N/A	98.97

DELTA
Truck Boxes

- Swing operated dual lids
- Self-adjusting locks
- Removable sliding tray.



A. Polyethylene
109⁹⁸ each
every day

B. Aluminum
299⁹⁸ each
every day

#1019733/22724.

#1004549/1025717.

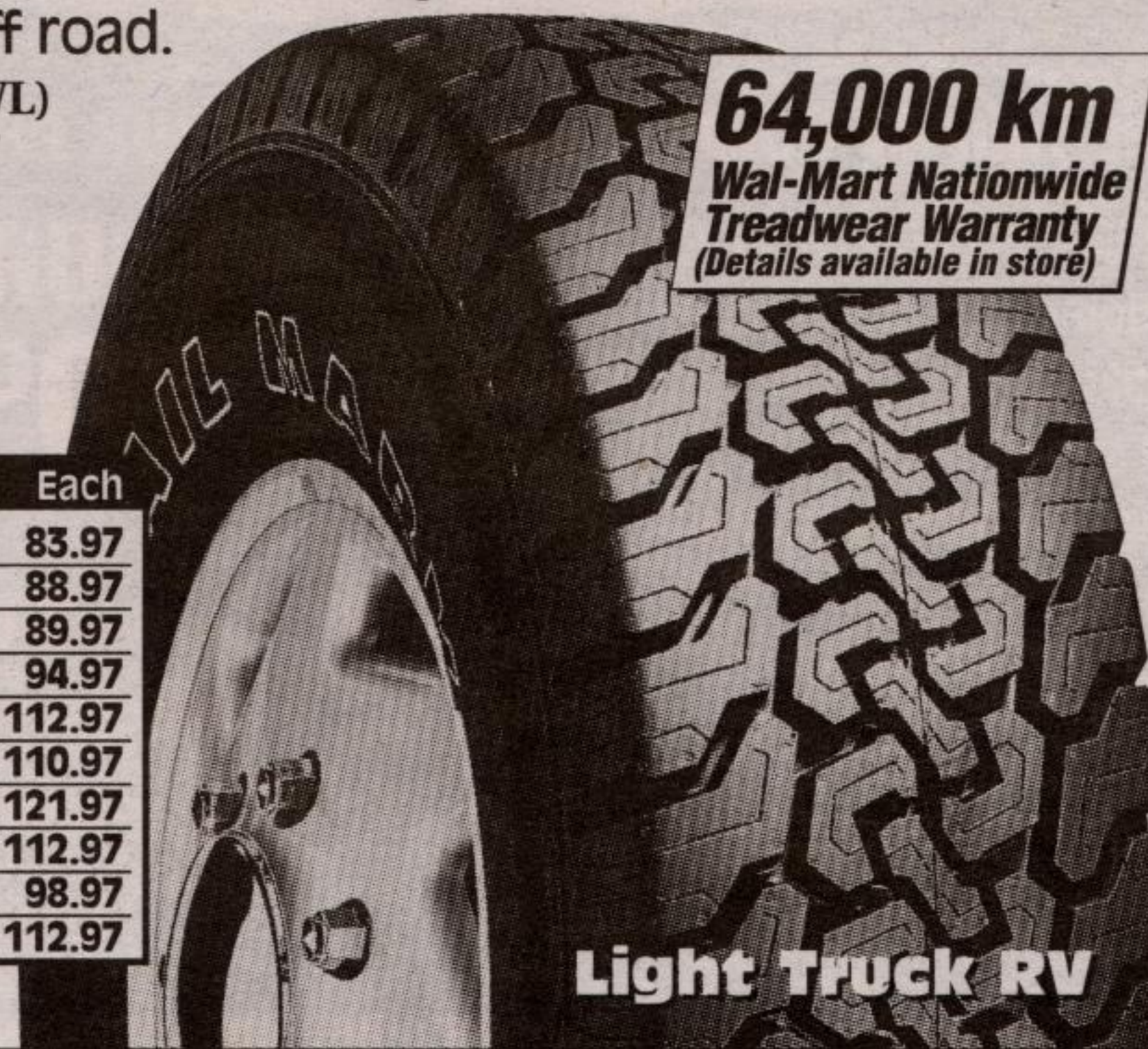
Trail Mark Radial APR Light Truck and RV Radial Tires

- All-terrain, aggressive tread design excellent for all-weather traction on or off road.

P205/75R15 97S SL (OWL)

68⁹⁷ each
every day

64,000 km
Wal-Mart Nationwide
Treadwear Warranty
(Details available in store)



Size	Each
P215/75R15 100S SL (OWL)	83.97
P225/75R15 102S SL (OWL)	88.97
P235/75R15 105S SL (OWL)	89.97
LT235/75R15 104Q C (OWL)	94.97
31X10.50R15 109Q C (OWL)	112.97
LT225/75R16 103Q C (OWL)	110.97
LT245/75R16 108Q C (OWL)	121.97
LT265/75R16 112Q C (OWL)	112.97
LT215/85R16 110Q D (B)	98.97
LT235/85R16 120Q E (B)	112.97

OWL = Outline White Lettering
B = Blackwall

EVERY TIRE PURCHASED AT WAL-MART INCLUDES:

- Installation
- Road hazard warranty
- New tire valve
- Rotation every 10,000 km
- Flat repair
- Nationwide warranty
- Available in stores with Automotive Centres only.



WE SELL FOR LESS every day!