

# Home safe home: The perfect presents are smoke/CO

When gift shopping for loved ones, many of us find ourselves asking, 'what do they really need?' Without a doubt, everyone needs safety appliances. And, unlike ties or black socks, you can never have too many.

Among the safety appliances that you should consider buying for loved ones are smoke and carbon monoxide alarms and fire extinguishers. Every floor of the home should be equipped with at least one of each.

But with so many different models available, how do you choose the right one? The most

important things to look for are that the model is made by a reputable manufacturer like First Alert, and that it has been approved by Underwriters Laboratories of Canada (ULC).

Both types of smoke alarms - ionization and photoelectric - are designed to provide adequate warning, but they work differently. Ion smoke alarms are generally more effective at detecting flaming fires. Photoelectric smoke alarms are generally



quicker at detecting smoldering fires. Every home should have both types to maximize the level of warning and protection against the risk of

fire. As opposed to smoke alarms, different models of carbon monoxide detectors work similarly, but offer a variety of features. You may choose a battery operated model or a plug-in model or even one with a battery back up in case the power fails.

Fire extinguishers are designed to fight fires of different materials. Class A fire extinguishers are effective against fires involving paper or wood. Class B extinguishers

are effective against flammable liquids. Class C extinguishers are designed to fight fires involving "live" electrical equipment.

Many municipalities and provinces across Canada require homes to have smoke and carbon monoxide alarms. If you have a friend or family member who doesn't have at least one of each type of alarm - it would make a great gift.

Regardless of the type of safety appliance you choose, it will be a happy holiday season knowing that you've given a gift that may save a life.

—By Treena Shamber  
News Canada



**GORD\*\* & MICHELE\* DAWE**  
**1-888-656-4348**

"Give Us A Minute Of Your Time And We Will Give You Years of Experience"



Gord Dawe\*\*  
Assoc Broker



Blue Springs Realty (Halton) Corp.

Michele Dawe\*  
Sales Rep.

**NEW**



**ALL THE RENOVATING IS DONE! \$209,900**

Well cared for 3 bedroom brick, stone & aluminum backsplint in family neighbourhood. Tiled entrance, French doors with beveled glass. Modern kitchen with Maple cupboards, ceramic tile floor & backsplash with walkout to large deck. Two updated washrooms, hardwood floors, finished rec. room with gas fireplace, walkout to fenced backyard. Central vac & central air conditioning. Please call Gord\*\* to view.

**NEW**



**CHEAPER THAN RENT**

3 bedroom, 2 storey brick condominium townhouse. 2 full washrooms, rec. room, laundry room, gas fireplace with walkout to fenced yard. The low interest rates won't last forever. \$117,900.



**IF YOU LIKE THE UNIQUENESS OF OLDER HOMES, DON'T MISS THIS ... \$189,900**

Older home in mature area with front porch charm. Large 66' x 132' lot with large 2 tiered back deck, 4 bedrooms, living room with Vermont Casting gas stove, separate dining room, Wood floors in LR & DR, ceramic flooring in foyer & kitchen, large baseboards. Cozy feel of yesteryear!



**MILL CREEK COUNTRY CLUB \$119,900**

Affordable Carefree Adult Living - 2 bedroom modular home on leased lot, backing onto the water. Oak kitchen with skylight. Living room with walkout to wrap-around deck. Bay window in dining room. Master bedroom with walk-in closet & 4 pc. ensuite with jacuzzi. Fridge/stove/washer/ dryer/dishwasher included. Call Michele\* for details.



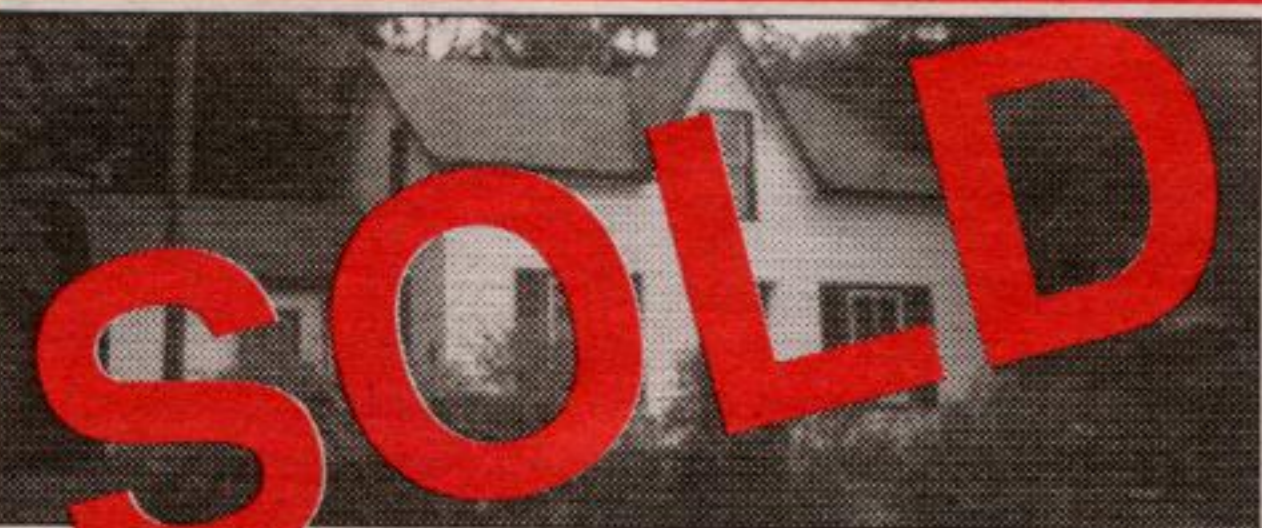
**TRAILER PARK AND CAMPING**

Well established seasonal campgrounds with 130 sites and room on 62 acres for expansion with the GTA. Provides - Owner house, inground pool, hot showers, open and wooded sites, newer hookup, pavilion, store. Don't miss this opportunity. Only \$895,000.



**EASY LIVING FOR FIRST TIME BUYERS**

Spacious 2 bedroom semi detached older home. Living room with gas fireplace. Wood trim. Eat-in kitchen with walkout. Wood floors under carpet on 2nd floor. Fenced yard. Above ground pool with new liner. Updated windows in kitchen, bedrooms and basement. Updated roof. Please call Gord Dawe\*\* to view. \$114,900.



**AN OPPORTUNITY TO OWN YOUR OWN HOME \$99,900**



**BRICK FINISHED BUNGALOW IN GEORGETOWN - \$209,900**



**PEACEFUL COUNTRY YOU'LL LOVE THE VERY NATURE OF IT**

Guelph/Eramosa Township - Country Lot  
1.83 Acres Bring Your Building Plans  
**\$99,900**



Town & Country Specialist



Blue Springs Realty (Halton) Corp.

Loc.: (905) 877-5211 Tor.: (905) 874-3051  
1-800-834-5516 Fax: (905) 877-5154

**Maureen Plucinsky B.Sc.**  
Sales Representative

<http://maureen.ca>

**NEW**



**Caledon: Incredible Views Pond**

Caledon: Gracious, elegant home on ~25 ac on top of a hill with phenomenal views. Pond. Great rm with hrdwd floor, cathedral ceiling, FP & picture window. DR with granite FP & French drs o/l solarium. Fabulous gourmet kit. MBR with lavish marble ensuite. Fin lower level with 2nd kit. Rolling/clear. Landscaped. Superb unique home. \$529,000

**NEW**



**Ballantry in St. George's Glen**

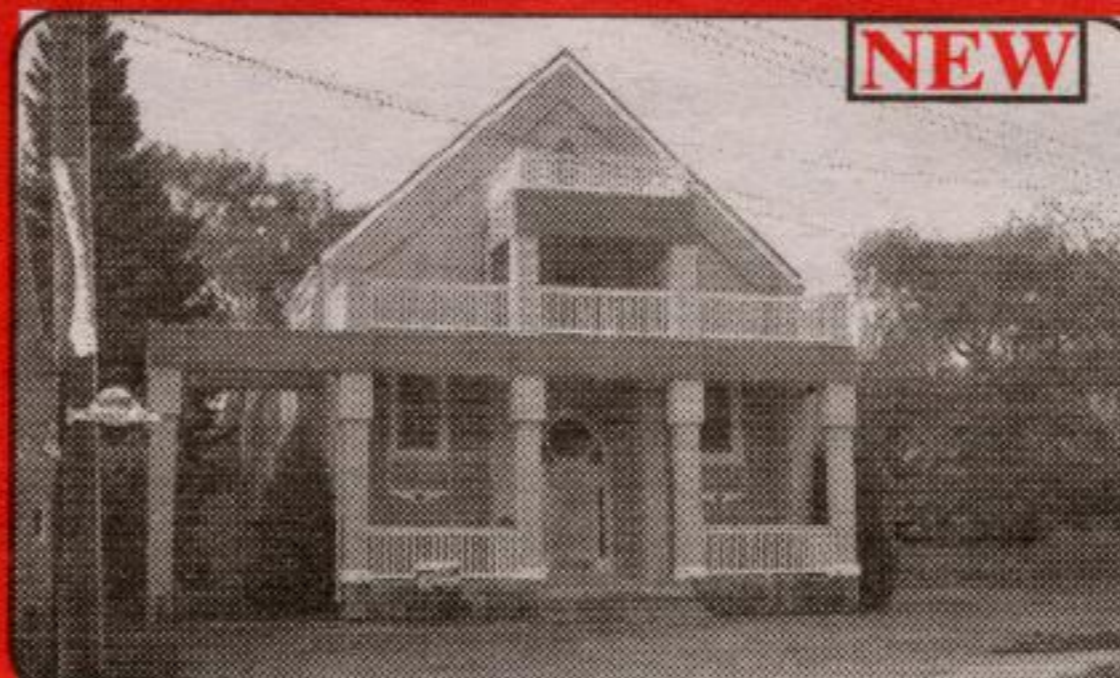
Fabulous estate on 2 landscaped ac min from Georgetown & GO. 9' ceilings. Vinyl casement windows. Upgrades galore: stone elevation; 3 car gar; hrdwd; ceramic tiles; open upgraded staircases; upgraded subfloor; pot lights; whirlpool; CAC; CVAC; etc. No trains, hydro towers, planes or traffic. A perfect place to bring up a family. \$479,000

**NEW**



**Erin: 3600+2000 SF, private & treed**

Spacious, elegant cape cod loc on top of a hill on a private, treed 2.4 ac lot in Erin ~15 minutes N of 401 @ 25. Oversized triple gar, insulated & heated. Peacock slate & ceramic flrs. Marble/oak & reclaimed brick wood fireplaces, picture windows, beveled glass French doors, gourmet kitchen. Walk-out bsmt. Geo Thermal furnace. Spectacular views. \$459,000



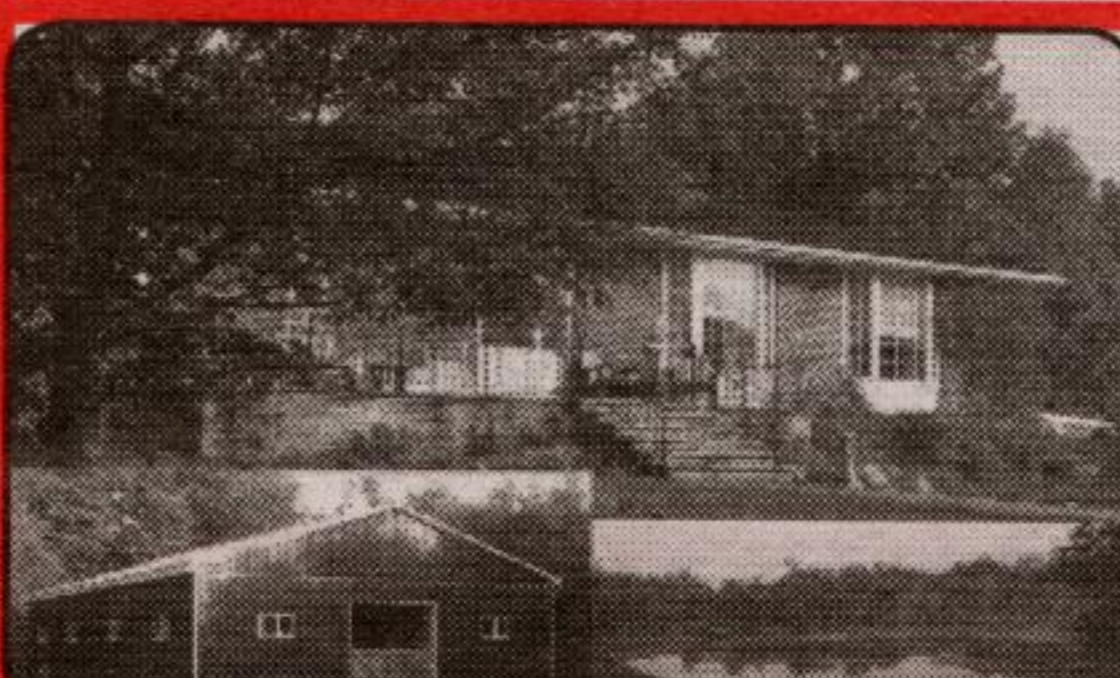
**Georgetown, Central Com. C-2**

Awesome century church, 1876. Renovated over past 4 yrs. Over 4700 sq ft of living, office or business space. Zoned central commercial-C2. 2 lofts overlook main floor. 1+ kit, 4 washrooms. Pkg for ~12 cars with free parking lot across the road. Walk to Main Street. Suitable for professional office & business use. Can be rezoned res. \$389,000



**+2700 sq ft SHOP w heat & CAC**

**North of Rockwood:** Fabulous 5.25 ac estate with 2116 x 2 sq ft of living space. Fabulous kitchen with 3/4" maple floor. Family rm with FP & w/o. 3 oak stall horse barn (40' x 24'). 2700 sq ft shop, heated & airconditioned with 2 offices & 2pc washroom. All less than 16 yrs old & built to the highest standards. Trees, stream & 2 ponds with fish! \$449,900



**Erin: ~50 acre hobby horse farm**

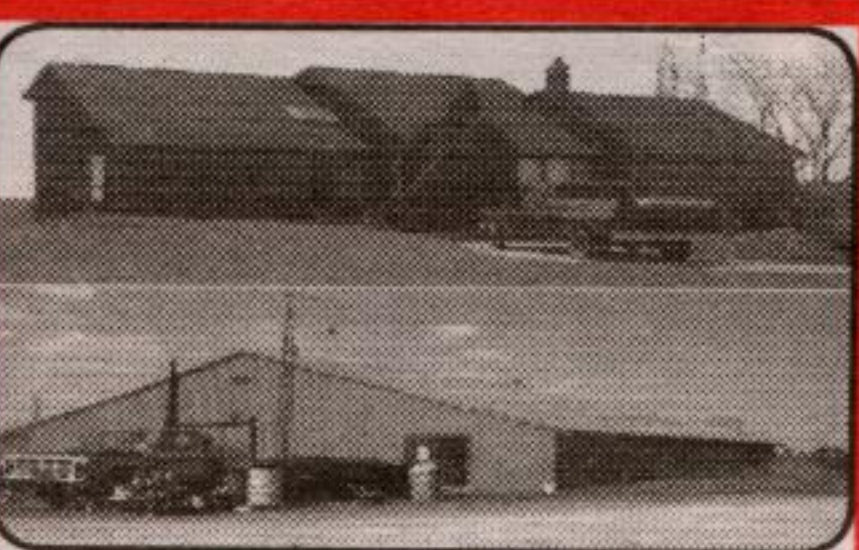
Perfect for commuters. Near Ballinacree, minutes to GO train. Land is partly reforested, has 2 ponds & acres suitable for hay at rear. Home, with large principal rms, overlooks a heart shaped pond. Horse barn, ~6 yrs old, has space for 6 stalls, tack rm & wash rack. Georgetown rural route number & tel number. Mail delivered to door. \$439,000



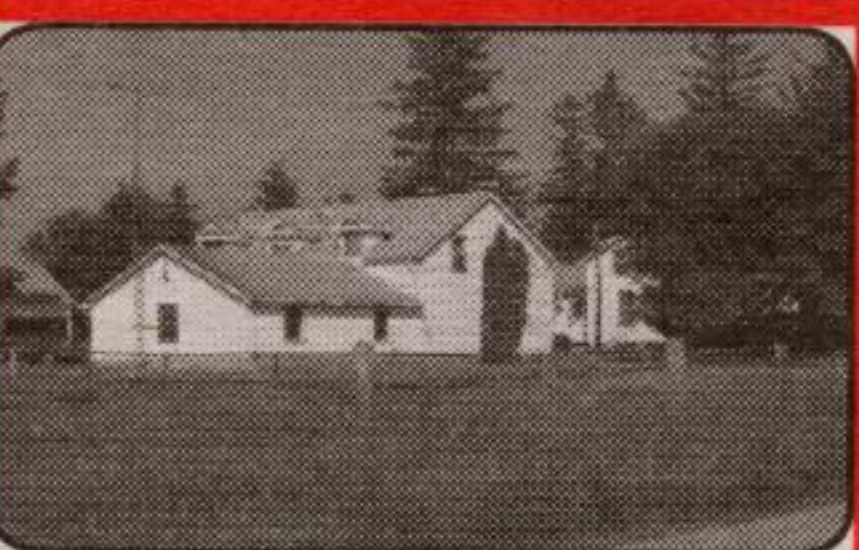
**100 acres**  
Milton: 100 ac. SE corner of 30th SR & 2nd Line. 15 min N of 401. 4200 ft frontage. Creek. 1/2 bush. No railway, hydro towers or traffic. Paved road.



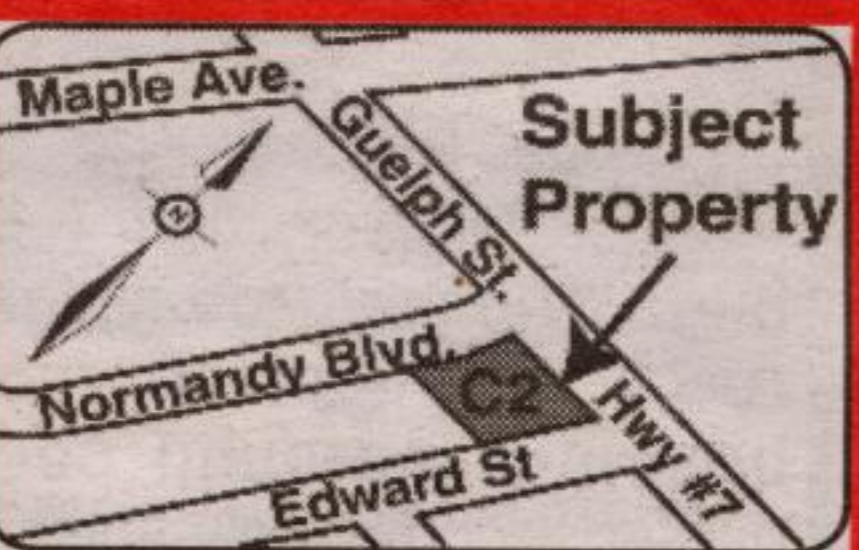
**Walk to schools & plaza.** Renovated 3+1 bdrm, (could be 4+1), 2WR back-split on 60'F lot. Hrdwd, cath ceilings, rec rm w wdstove & pot lights. \$209,000



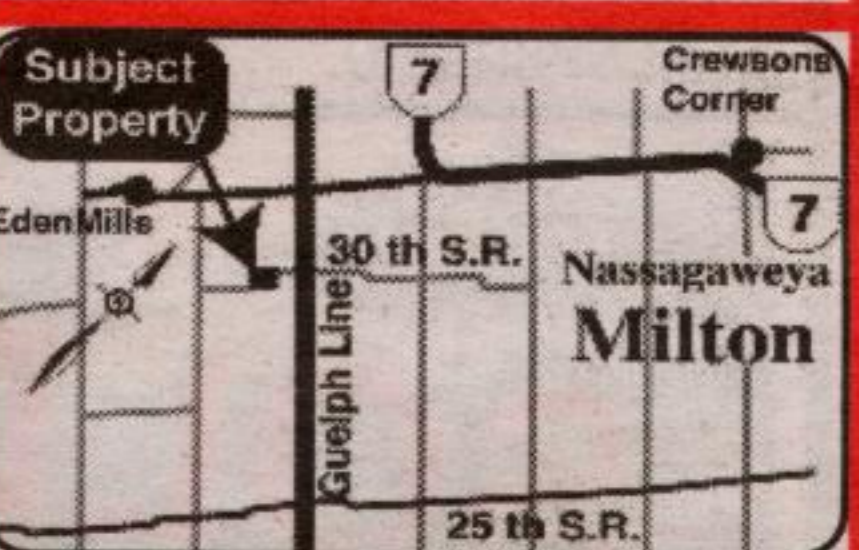
**Milton: Investment land.** 11.8 ac with 958 ft F on Hwy 25! 4000 sq ft legal, non-conforming industrial steel shop & Viceroy N of Burnhamthorpe. \$1.29M.



**Halton Hills: ~95 ac 2 homes** (3bdrm & 5 bdrm) S of Georgetown, ~10 min to 401. Bank barn, 15 stalls, shed & drive shed. Excel well. Pond. 10730/2-6th L.



**Georgetown: 120-122 Guelph St:** brick building, 3 homes, zoned C2, General Commercial. 3 road frontages, perfect for a drive through business. \$650K



**Milton: 2 acre building lot** Located in vicinity of the Blue Springs Creek. Plenty of good water. ~12min to 401 at Guelph Line. Quiet road. \$97,000



**2 treed, 1 acre, adjacent building lots** in H. H., backing onto conservation. Quick access to Hwy 7 West of Acton. Excel wells. Paved road. \$135,000