

HASSELL

QUALITY USED CARS
Since 1984

**DUE TO CONTINUED SUCCESS,
THE SUPER SPECIAL IS EXTENDED**

\$125.00 Value
*most cars & trucks

59⁹⁵ INCLUDES...

- Inspect exhaust system • Lube, Oil and Filter
- Check for tune-up • Rotate & balance tires
- Check all fluid levels, belts, hoses & battery
- Inspect suspension & steering • Inspect fuel systems

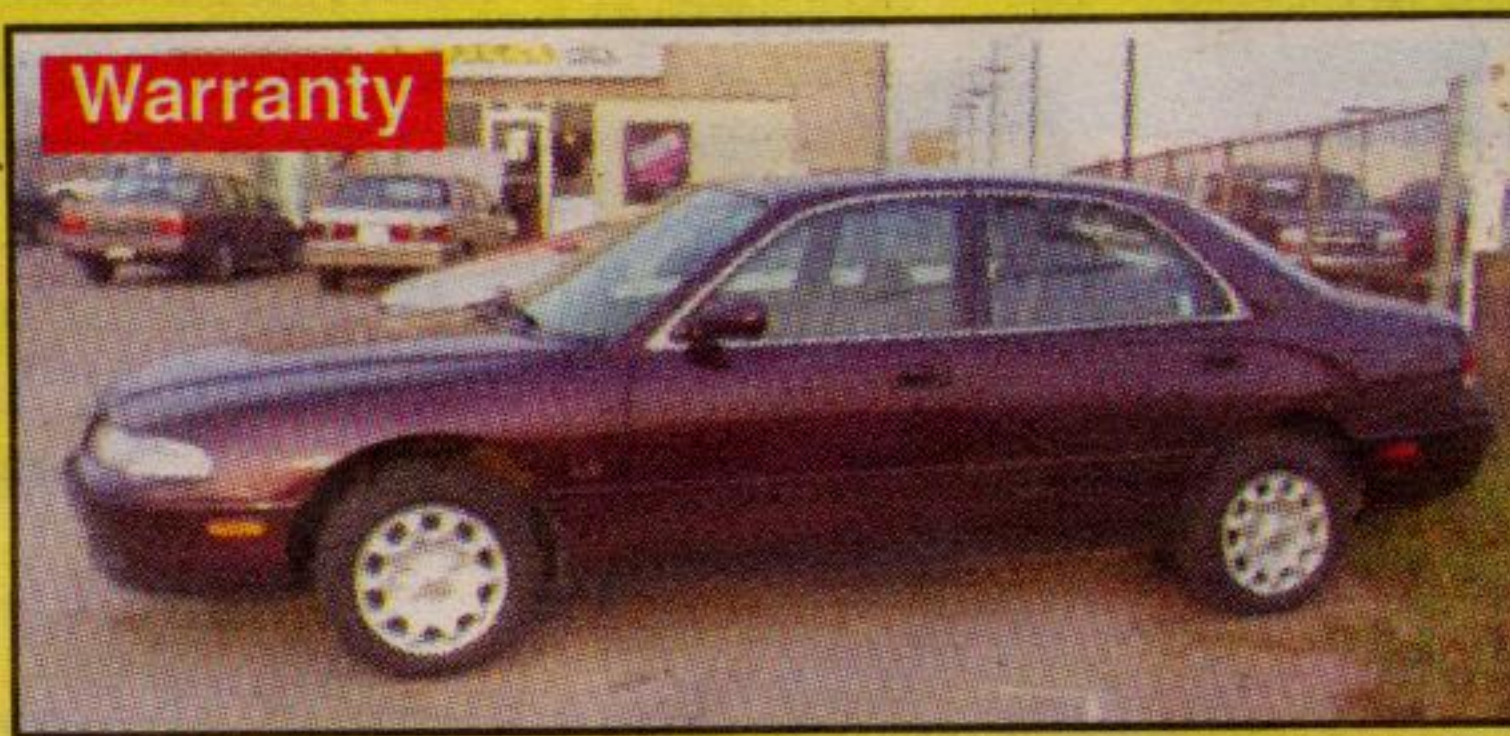
Also FREE...

1. Two Georgetown Cinemas passes
2. One Petro Canada car wash (Sinclair & Guelph St.)
3. One case of 12 Coke
4. One 4L jug of windshield washer fluid
5. A snow brush



Warranty

98 TOYOTA RAV 4
5 Speed, Loaded,
Mint Condition **\$17,700**



Warranty

97 MAZDA 626
4 Cyl, Auto,
Loaded **\$11,700**



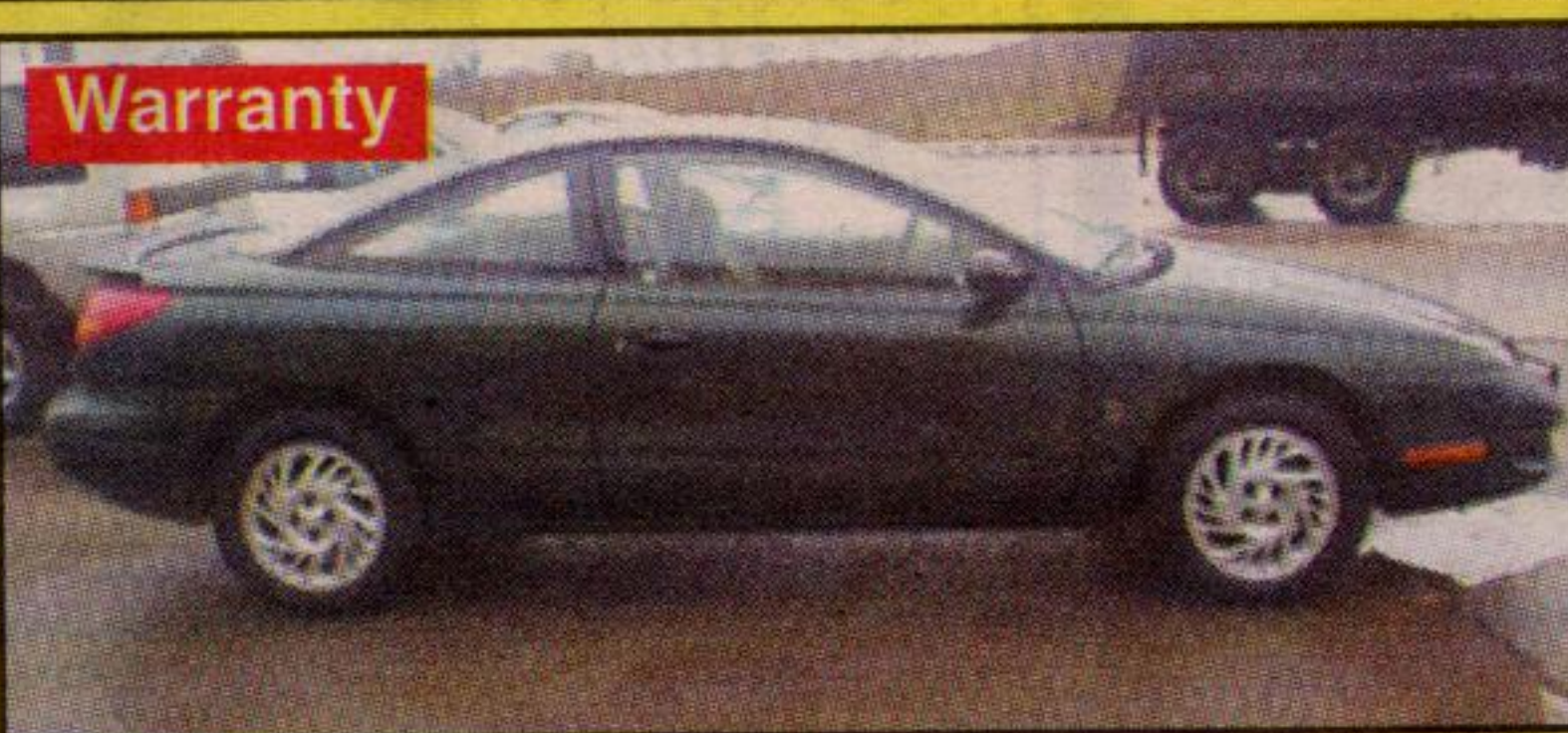
Warranty

90 GMC PICKUP
Loaded, Mint,
Auto, 350 **\$7,900**



Warranty

98 SUNFIRE
Mint Condition,
Auto, Air **\$10,700**



Warranty

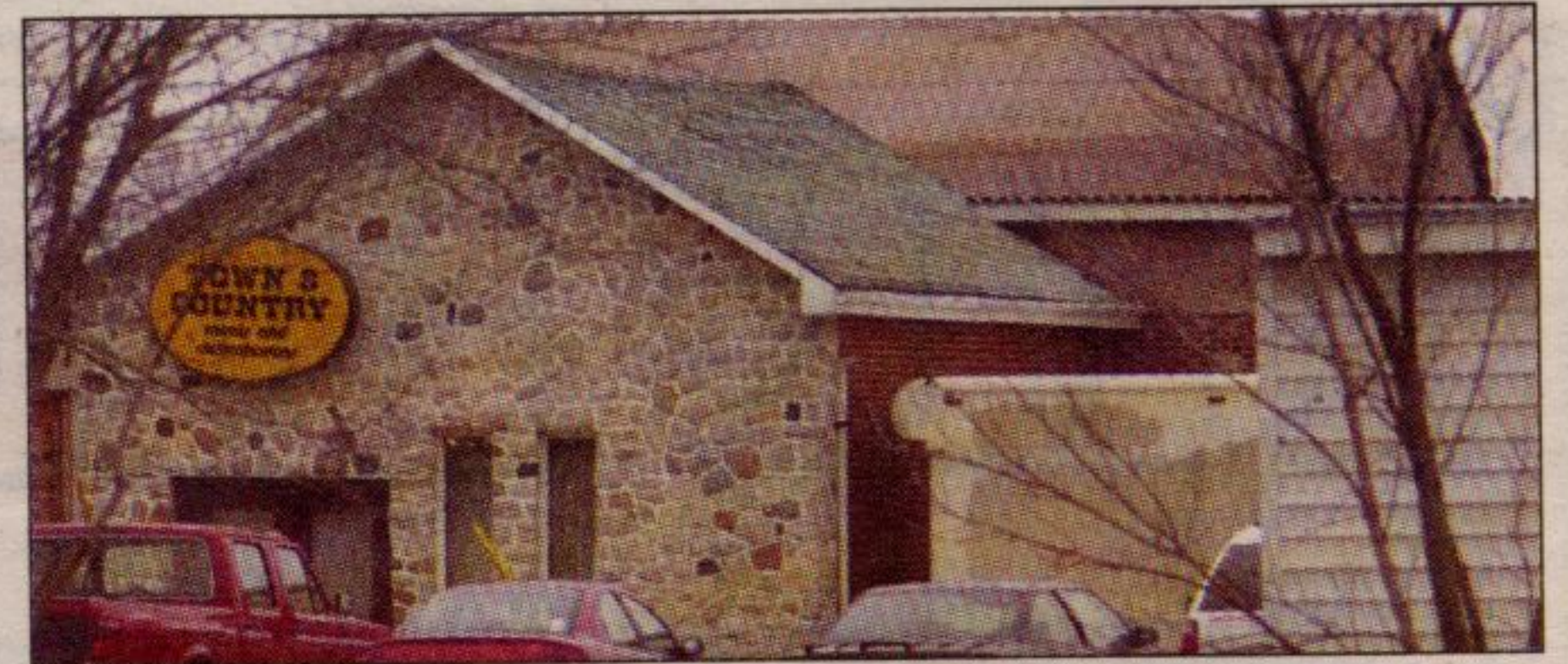
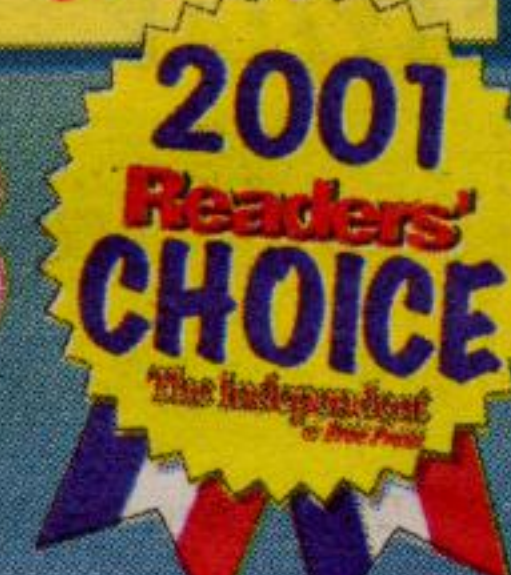
98 SATURN
5 Speed, Air,
Mint Condition **\$10,200**



Warranty

95 GRAND AM
V6, Auto, A/C,
Excellent Shape **\$8,500**

Dave Hassell 877-7958
45 MOUNTAINVIEW RD. N., GEORGETOWN L7G 4J7



Town and Country Farms Inc. and its owners are facing numerous MOE charges. Photo by Ted Brown

Local abattoir, owners facing MOE charges

A Halton Hills abattoir and its owners are facing environmental charges for illegally discharging slaughterhouse waste.

Leo Butko, regional supervisor Investigations and Enforcement Branch of the Ministry of the Environment (MOE), said Town and Country Farms Inc. on Steeles Ave., Michael Dorgo and Leslie Dorgo are facing charges stemming from incidents between March 1995-February 2001.

The charges are: discharging slaughterhouse waste into Sixteen Mile Creek which may impair the water quality in contravention of the Ontario Water Resources Act (OWRA); permitting the discharge of slaughterhouse waste into the natural environment that caused an adverse effect; and depositing slaughterhouse waste onto land that is not a waste disposal site in contravention of the Environmental Protection Act (EPA).

Butko said Michael Dorgo, Leslie Dorgo and Mario Henry have been charged with failing to take all reasonable care to prevent the corporation from causing or permitting an unlawful discharge in contravention of the (OWRA) and as directors or officers of Town and Country Farms Inc. failing to take all reasonable care to prevent the corporation from causing or permitting an unlawful discharge in contravention of the EPA.

Henry has also been charged with providing false or misleading information to a provincial officer in contravention of the EPA between February and March 2001.

Butko would not provide further information on those charged or details of the investigation.

Butko explained that maximum penalties for the charges against individuals range from \$20,000 and a year in jail, to \$4 million and five years in jail if there is a proven adverse effect on the environment. Maximum penalties for corporations range from fines of \$100,000 to \$6 million if the adverse effect is proven.

A charge of fraud under \$5,000 laid earlier by Halton Regional Police against Michael Dorgo, was withdrawn in Milton court Thursday.

The three charged are to be in Burlington court Tuesday, December 18.

—By Lisa Tallyn, staff writer



Jan & Carrie wish to invite all their clients to join them at their new location



Salon JC

9 James St., Georgetown
(Behind the License Office)
905-873-0215

NEW CLIENTS & WALK-INS
ALWAYS WELCOME