

HALTON HILLS
Working Together Working for You!

INVITATION TO WORKSHOP

Official Plan Program Environment Workshop

The Town of Halton Hills is undertaking an Official Plan Review. An important aspect of the Review is to obtain input from the community to help guide the future direction of the Town. Through Steering Committee meetings we have identified three major areas of interest: Growth Management, Environment, and Economic Development. You are invited to contribute your views at the Environment workshop. The workshop will be held on:

Tuesday, November 20, 2001
Cultural Centre
9 Church Street, Georgetown
6:00 p.m. to 9:00 p.m.

6-7:00 p.m. Welcome, Introductions, and Presentation
7-8:00 p.m. Small discussion groups
8-9:00 p.m. Action planning (Environment) and concluding remarks

We value your input and hope that you can join us. We ask that you register ahead of time, due to limited capacity. Please contact Jason Innis at 905-873-2601 ext. 2256 or by email at jasoni@town.halton-hills.on.ca to confirm your attendance.

Last day for registration is **Wednesday, November 14, 2001 by 4:00 p.m.**

Information on the Town of Halton Hills Official Plan Program is available at www.town.halton-hills.on.ca (Planning & Development Services)

171

OVERNIGHT PARKING RESTRICTION

Uniform Traffic Control By-law No. 84-1 prohibits parking:

2:00 A.M. - 7:00 A.M. (Daily)
November 15 to April 15

on all streets under the jurisdiction of the Town of Halton Hills, unless authorized signs indicating otherwise are specifically posted. Motorists are reminded that By-law No. 84-1 also prohibits the parking of a vehicle on all Town or Regional Roads for longer than 3 consecutive hours at any single location, unless otherwise specifically posted.

On-street parking hinders snow clearing and other road maintenance operations. Your co-operation is requested. Please comply with the requirements of this By-law.

AUTHORITIES MAY HAVE VEHICLES TICKETED OR TOWED AWAY AT THE OWNER'S EXPENSE.

Motorists should note that Town By-Law Enforcement Officers will be on patrol through the duration of the parking restriction period and will ticket and/or have the offending vehicle removed.

SNOW REMOVAL

The placing or pushing of snow or ice onto roadways or cleared sidewalks will obstruct or encumber vehicular and pedestrian traffic. The Town's Obstruction, Encumbering or Fouling of Highways By-law No. 90-68 prohibits such action.

Improper snow and ice clearing can be a serious hazard to motorists and pedestrians. Your co-operation is requested. Please comply with the requirements of this By-law.

AUTHORITIES MAY HAVE SNOW AND ICE REMOVED AT THE PROPERTY OWNER'S EXPENSE.

R.C. Austin, P.Eng.,
Director of Engineering & Public Works

172

1 Halton Hills Dr.,
Halton Hills, ON L7G 5G2
Tel.: 905-873-2600
Fax: 905-873-2347

KIDS GET ARTHRITIS TOO.

THE ARTHRITIS SOCIETY



Please help us find the cure! To donate, or for more information, call

Ontario Division

1-800-321-1433

Town properties on the selling block

The town plans to sell a couple of its properties. Up for sale is a 30-foot wide strip of land between Todd Rd. and Armstrong Ave. that used to be a C.N. (Canadian National) spur line right-of-way. Economy Forms Corporation has expressed interest in buying a portion of the land.

The town will also sell three building lots on the north side of John St. The land, part of which is now used as an access to a trail between John St. and Wildwood Rd., was also an old C.N. right-of-way acquired by the town. The land, except for a walkway to the trail, will be sold as three lots, fronting onto John St. The town provided water and wastewater servicing to the 17x40 metre lots when John St. was reconstructed in 1998.

GDHS changes dates for parent interviews, report cards

The parent interview evening at Georgetown District High School has been changed to Wednesday, November 21.

Informal interviews will be held in the cafeteria from 6:45 to 7:25 p.m. followed by formal parent teacher interviews from

7:30 to 9 p.m.

The date for mid-semester report cards has also changed. Report cards will be sent home on Thursday, Nov. 15. Report cards will also have information regarding booking of formal interviews.

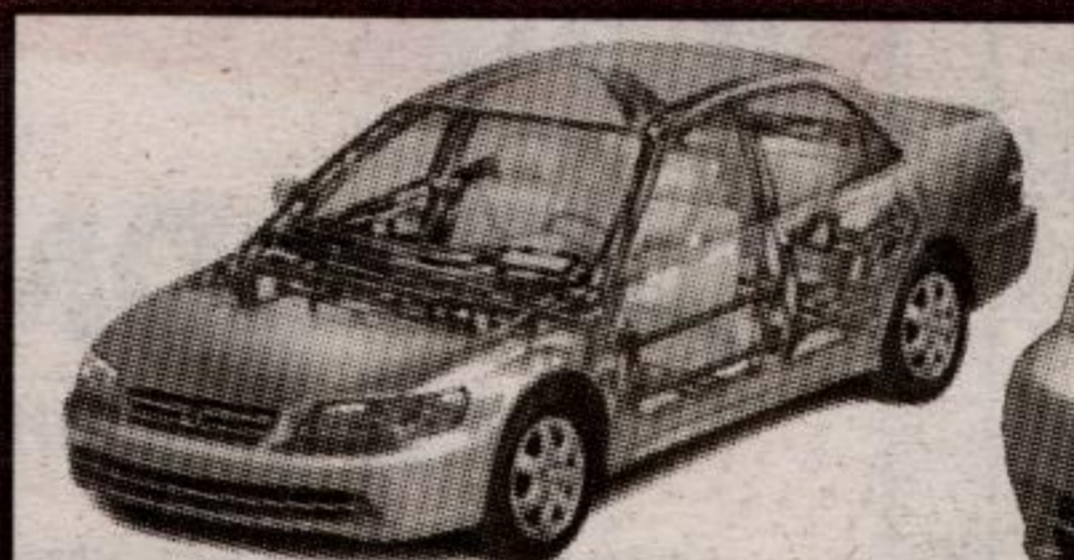
Honda: Reliable, Affordable, Comfortable

HONDA 2002 SPECIAL EDITIONS

LET THE STARS BE YOUR GUIDE



NHTSA FIVE-STAR SAFETY RATING



Rigid safety cage, front & rear crush zones and side impact protection.



ACCORD SEDAN Automatic Special Edition \$25,800 MSRP*

OR LEASE IT FOR **\$318** (6.8% LEASE RATE) per month for 48 months, WITH \$3,593 DOWN FREIGHT & P.D.E. INCLUDED

4-Speed Automatic Transmission • CFC-Free Air Conditioning • Dual-Stage Front Airbags • Micron Air Filtration • Fuel Injection • Cruise Control • Power Windows, Door Locks & Heated Mirrors • 2.3L, 150-hp, SOHC VTEC Engine • Front & Rear Stabilizer Bars • Front & Rear Double-Wishbone Suspension • Progressive Valve Shock Absorbers • Exterior Safety Cage • Body-Coloured Door Handles, Mirrors & Side Mouldings • Front & Rear 3-Point Seat Belts • Anti-Theft Immobilizer • Remote Trunk/Fuel Lid Release • Front Seatbelt Pretensioners • Adjustable Steering Column • Driver's Manual Seat Height Adjustment • IsoFix Child Safety-Seat Anchor System • Child-Proof Rear Door Locks • Child-Seat Tether Anchors (3) • Tachometer • Fold-Down Rear Seatback • 12V Accessory Outlet • & More...

Extra Features! Extra Value!

- AM/FM Stereo with CD and Cassette Player and Audio Anti-Theft
- Power Moonroof
- Aluminum Alloy Wheels
- Anti-Lock Braking System (ABS)
- Keyless Remote Entry and Security System
- Heated Front Seats
- Wood Print Interior Trim
- Leather-Wrapped Steering Wheel
- And More

Value Price Advantage \$2,090[†]

ACCORD SEDAN Special Edition V6 \$28,300 MSRP* OR LEASE IT FOR **\$348** per month for 48 months, WITH \$4,576 DOWN FREIGHT & P.D.E. INCLUDED

All the features of the 2002 Accord Sedan SE 4-Cylinder plus:

- 3.0L SOHC 24-valve VTEC 60° V6 Engine • Traction Control • Driver's Side Airbag (SRS)
- Passenger's Side Airbag (SRS) with Seat Sensors • Rear Disc Brakes • 8 Way Power Driver's Seat • Power Driver's Seat Height Adjustment • And More...



CIVIC SEDAN DX \$17,500 MSRP* OR LEASE IT FOR **\$228** per month for 48 months, WITH ONLY \$1,925 DOWN FREIGHT & P.D.E. INCLUDED

• 115-hp, 1.7 Litre Engine • Dual Front Airbags • Immobilizer Theft-Deterrent System • Fuel Injection • 5-Speed Manual Transmission • Lockable Remote Fuel and Trunk Lid Releases • 3-Point Seat Belts (all Positions) • Adjustable Steering Column • 14" Wheels with Full Covers • Tinted Glass • Front & Rear Stabilizer Bar • 60/40 Split Fold-down Rear Seatback • LATCH Child Safety-Seat Anchor System • Rear Child-Seat Tether Anchors • & More...

PLUS The Civic Sedan DX Group Option package includes: CFC-Free Air Conditioning • Micron Air Filtration System • Power Door Locks • High-Power AM/FM Stereo with CD Player • Audio Anti-Theft • Keyless Remote Entry • Body Coloured Door Handles



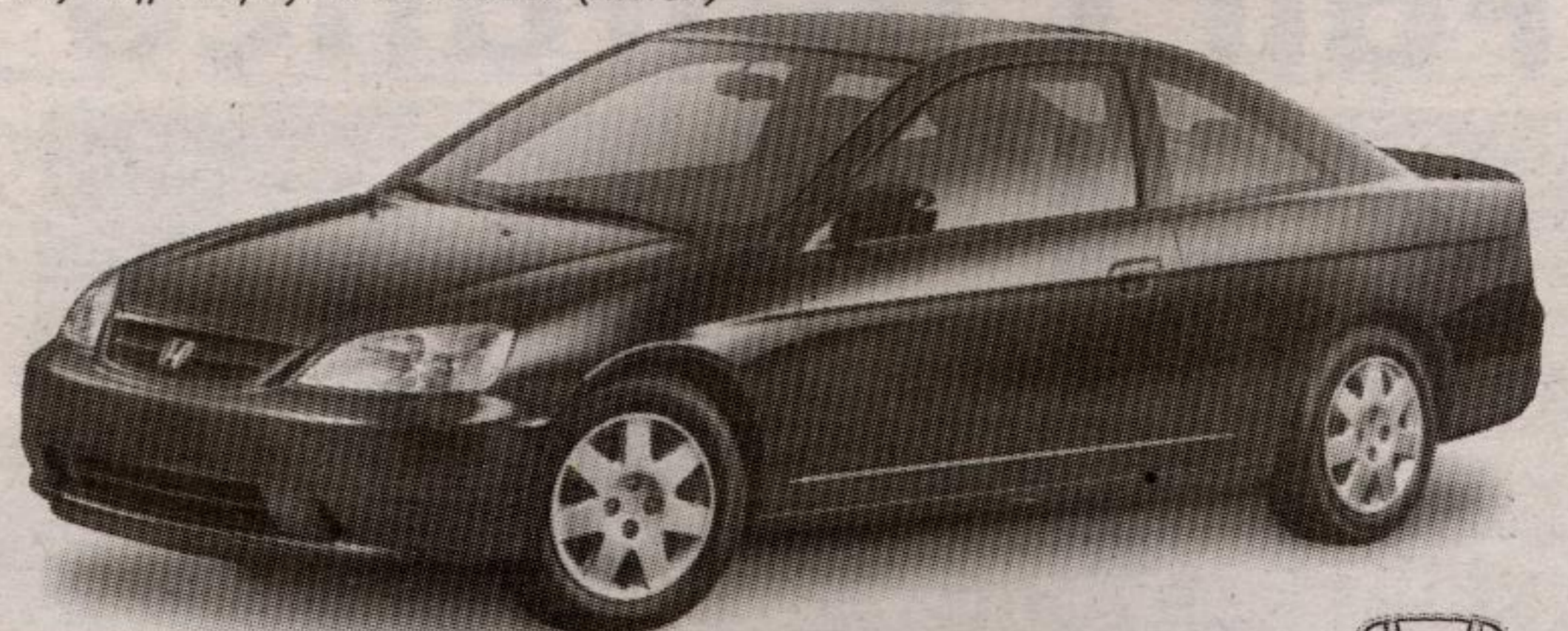
NHTSA FIVE-STAR SAFETY RATING
For more safety information visit www.nhtsa.dot.gov

"The crashworthiness of the Civic in a 40-mph frontal offset crash test makes it a "Best Pick" in its class." - Insurance Institute For Highway Safety (IIHS)
"Civic gets highest rating of 5 stars in frontal crash test." - National Highway Traffic Safety Administration (NHTSA)

CIVIC COUPE LX \$18,100 MSRP*

OR LEASE IT FOR **\$238** per month for 48 months, WITH \$2,460 DOWN FREIGHT & P.D.E. INCLUDED

• Air Conditioning (CFC-Free) with Micron Air Filtration • Power Windows, Door Locks, & Mirrors • High-Power AM/FM Stereo with CD and 6 Speakers and Audio Anti-Theft • Keyless Remote Entry • Immobilizer Theft-Deterrent System • Dual Front Airbags • 15" Wheels with Full Wheel Covers • 5-Speed Manual Transmission • 1.7 Litre SOHC 16-Valve Engine • Fuel Injection • Tachometer • Front and Rear Stabilizer Bars • 3-Point Seat Belts • LATCH Child Safety-Seat Anchor System • Lockable Remote Fuel and Trunk Lid Releases • 60/40 Split Fold-down Rear Seatback • Adjustable Steering Column • Cruise Control • Tinted Glass • Body-coloured Door Handles • & More...



Your Neighbourhood
ONTARIO Honda DEALERS

FOR A HONDA DEALER NEAR YOU, CALL 1-888-9-HONDA-9 OR VISIT OUR WEBSITE AT www.honda.ca



HCFI Lease and finance offers are available, on approved credit, only through Honda Canada Finance Inc., until November 30, 2001. Lease payments shown are for 48 months and include \$850 for freight and P.D.E. with 96,000 km allowance (12¢/km exceeding 96,000 km applies). *Based on a new 2002 Accord Sedan SE, 4-Cyl. Automatic/Accord Sedan SE, V6 Automatic/Civic Sedan DX-G, 5-Speed/Civic Coupe LX, 5-Speed (model CG5672PF/CG1662E/ES1542P/EM2152P) \$318/\$348/\$228/\$238 per month for 48 months. A.L.R. 6.8%/7.8%/6.8%/7.8% (total lease obligation of \$15,264/\$16,704/\$10,944/\$11,424). Down payment or equivalent trade of not include freight and P.D.E. (\$850). †Taxes, licence, insurance, administration and maintenance fees are additional. Dealer may lease/sell for less. If your dealer does not have the 2002 vehicle you want in stock, the dealer will gladly order it for you. †Value Price Advantage is based on a comparison between the 2002 Accord LX (CG5542P & CG5642P) and the 2002 Accord Special Edition 4-Cyl. (CG5572PR & CG5672PF). Special Edition features value is \$3,890, incremental price for features is \$1,800, Value Pricing Advantage is \$2,090. See your neighbourhood Ontario Honda Dealer for details.