

COMMUNITY CALENDAR

Continued from pg. 8
Saturday, Oct. 27
GDHS bake sale: During the annual Georgetown High School craft and art sale on Saturday and Sunday (Oct. 27 and 28), the Parents Partners Group will be holding a bake sale to raise funds for science equipment. Bring baking donations to the GDHS large gym between 8:30 a.m. and 10 a.m. on the Saturday. The craft and art sale runs 10 a.m. to 4 p.m. Admission is \$3, children free.
Glen anniversary: Glen Williams Town Hall hosts an open

house, and silent auction to celebrate the hamlet's 130th anniversary. Coffee and birthday cake, 4-6 p.m., historical walk, 4:30 p.m. and silent auction (old street signs) and wine and cheese, 6-9 p.m.
Shrub planting: Friends of Fairy Lake welcomes volunteers to help plant shrubs by the old park on the point in Prospect Park, 9 a.m. to noon. These shrubs will help reduce access for the geese and prevent soil erosion. Wear gloves and boots.
East Coast Night: Acton Legion Branch 197 hosts East Coast Night

at the Acton Legion, 9 p.m. to 1 p.m. The Bay Boys will entertain. Tickets are \$10 per person.
Halloween Dance: Ballinafad Community Centre hosts a Halloween Dance, starting at 9 p.m. Costume prizes. Light meal.
Babysitting course: The North Halton branch of the Red Cross is holding a babysitting course for

youths, aged 11 and older, on Saturday and Sunday, Oct. 27 and 28, 2-6 p.m. in Georgetown. For details or to register: 905-875-1459.
Nassagaweya bazaar: Nassagaweya Church Women's Auxiliary is holding a bazaar, 11 a.m. to 2 p.m. Lunch, baking, crafts, silent auction and quilt draw. The church is located on 15 Sideroad, just east of the Guelph Line (Brookville).
Sunday, Oct. 28
Community brunch: Kinette Club of Acton hosts a Community Brunch, 9:30 a.m. to 1 p.m. in the Acton Arena and Community

Centre. Proceeds to YBC. The all-you-can-eat buffet includes ham, sausage, eggs, French toast, pancakes, fruit cocktail, sweets, beverages. Wear your favourite costume and win prizes. Admission is \$5 with preschoolers free.
Citrus fruit sale: St. John's United Church's annual Citrus Fruit Sale is now on. Grapefruit, oranges, tangelos in 20 and 40 pound boxes start from \$19 to \$32. Delivery date is in early December. Deadline to order is Oct. 28. For more information call Shelley Allison, 905-877-4110.

Honda: Loaded With Value!



We promised you the moon, and we delivered.

6.8% Lease rate on Accord Sedan SE 4-Cylinder

2002 Hondas

ACCORD SEDAN

Special Edition \$25,800 MSRP*

OR LEASE IT FOR **\$318** (6.8% LEASE RATE) per month for 48 months, WITH \$3,397 DOWN FREIGHT & P.D.E. INCLUDED

4-Speed Automatic Transmission • CFC-Free Air Conditioning • Dual-Stage Front Airbags • Micron Air Filtration • Fuel Injection • Cruise Control • Power Windows, Door Locks & Heated Mirrors • 2.3L, 150-hp, SOHC VTEC Engine • Front & Rear Stabilizer Bars • Front & Rear Double-Wishbone Suspension • Progressive Valve Shock Absorbers • Exterior Safety Cage • Body-Coloured Door Handles, Mirrors & Side Mouldings • Front & Rear 3-Point Seat Belts • Anti-Theft Immobilizer • Remote Trunk/Fuel Lid Release • Front Seatbelt Pretensioners • Adjustable Steering Column • Driver's Manual Seat Height Adjustment • IsoFix Child Safety-Seat Anchor System • Child-Proof Rear Door Locks • Child-Seat Tether Anchors (3) • Tachometer • Fold-Down Rear Seatback • 12V Accessory Outlet • & More...

SPECIAL EDITION FEATURES

- AM/FM Stereo with CD and Cassette Player and Audio Anti-Theft
- Power Moonroof
- Aluminum Alloy Wheels
- Anti-Lock Braking System (ABS)
- Keyless Remote Entry and Security System
- Heated Front Seats
- Wood Print Interior Trim
- Leather-Wrapped Steering Wheel
- And More

Value Price Advantage \$2,090+

ACCORD SEDAN Special Edition V6

\$28,300 MSRP*

OR LEASE IT FOR **\$358** per month for 48 months, WITH \$4,358 DOWN FREIGHT & P.D.E. INCLUDED

All the features of the 2002 Accord Sedan SE 4-Cylinder plus:

- 3.0L SOHC 24-valve VTEC 60° V6 Engine • Traction Control
- Driver's Side Airbag (SRS) • Passenger's Side Airbag (SRS) with Seat Sensors
- Rear Disc Brakes • 8 Way Power Driver's Seat
- Power Driver's Seat Height Adjustment • And More...



CIVIC SEDAN DX \$17,500 MSRP*

OR LEASE IT FOR **\$228** per month for 48 months, WITH \$2,622 DOWN FREIGHT & P.D.E. INCLUDED

115-hp, 1.7 Litre Engine • Dual Front Airbags • Immobilizer Theft-Deterrent System • Fuel Injection • 5-Speed Manual Transmission • Lockable Remote Fuel and Trunk Lid Releases • 3-Point Seat Belts (all Positions) • Adjustable Steering Column • 14" Wheels with Full Covers • Tinted Glass • Front & Rear Stabilizer Bars • 60/40 Split Fold-down Rear Seatback • LATCH Child Safety-Seat Anchor System • Rear Child-Seat Tether Anchors • & More...

PLUS The Civic Sedan DX Group Option package includes: CFC-Free Air Conditioning • Micron Air Filtration System • Power Door Locks • High-Power AM/FM Stereo with CD Player • Audio Anti-Theft • Keyless Remote Entry • Body Coloured Door Handles

NHTSA FIVE-STAR SAFETY RATING

MORE IMPROVEMENTS FOR 2002 CIVICS:

- Improved Suspension • Greater Safety • Improved Handling • More Comfort • Better Ride

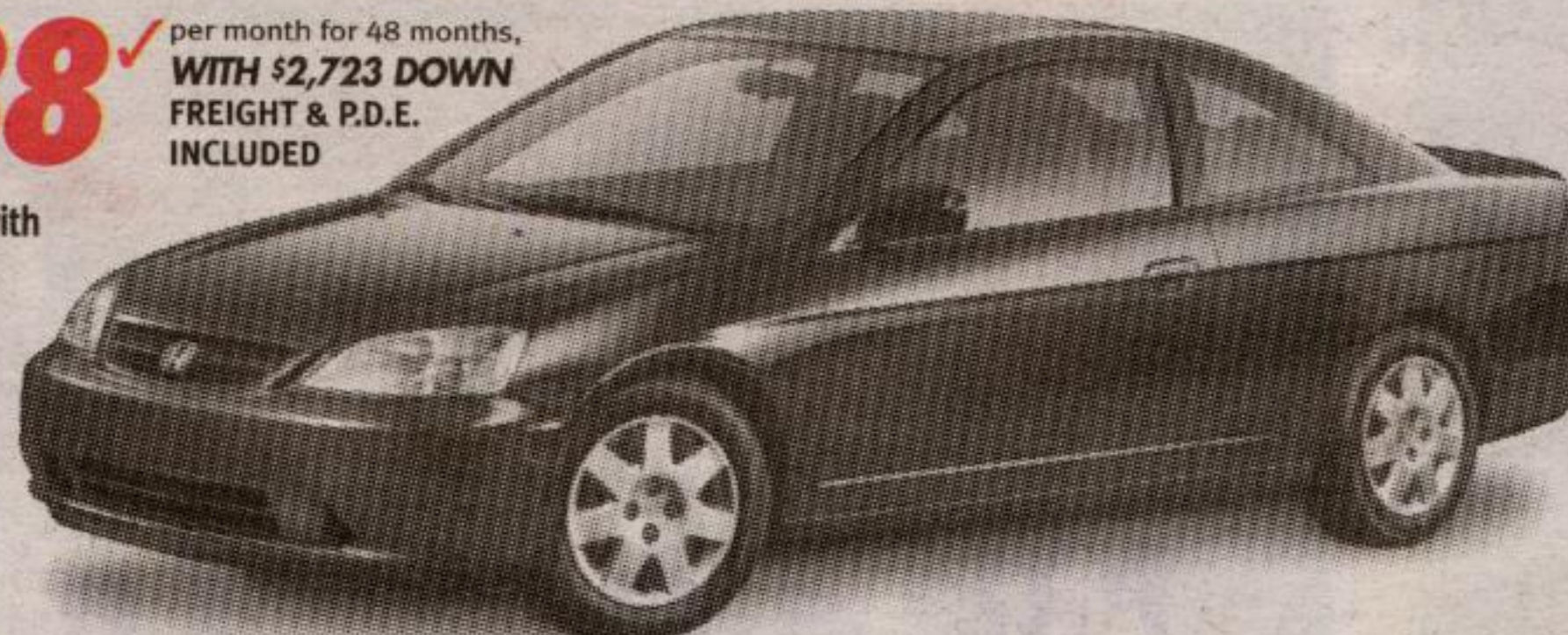


ARRIVING SOON IN DEALERSHIPS!

CIVIC COUPE LX \$18,100 MSRP*

OR LEASE IT FOR **\$238** per month for 48 months, WITH \$2,723 DOWN FREIGHT & P.D.E. INCLUDED

• Air Conditioning (CFC-Free) with Micron Air Filtration • Power Windows, Door Locks, & Mirrors • High-Power AM/FM Stereo with CD and 6 Speakers and Audio Anti-Theft • Keyless Remote Entry • Immobilizer Theft-Deterrent System • Dual Front Airbags • 15" Wheels with Full Wheel Covers • 5-Speed Manual Transmission • 1.7 Litre SOHC 16-Valve Engine • Fuel Injection • Tachometer • Front and Rear Stabilizer Bars • 3-Point Seat Belts • LATCH Child Safety-Seat Anchor System • Lockable Remote Fuel and Trunk Lid Releases • 60/40 Split Fold-down Rear Seatback • Adjustable Steering Column • Cruise Control • Tinted Glass • Body-coloured Door Handles • & More...



We are Clearing the Bases of New 2001 CR-Vs with #5.8% Purchase Financing

Ask your dealer about special offers on other remaining 2001 Hondas

Your Neighbourhood **ONTARIO Honda DEALERS**

FOR A HONDA DEALER NEAR YOU, CALL 1-888-9-HONDA-9 OR VISIT OUR WEBSITE AT www.honda.ca



See the flyer for CANADA'S Light Style STORE LIVING LIGHTING in today's paper

AN OPEN INVITATION

On Tuesday, October 30th at 8:00 p.m. in the Holy Cross School Library, Holy Cross Parish will be sponsoring a presentation on Birth Control and the SERENA method of natural family planning.

This presentation could be of interest for any couple seeking to achieve or avoid pregnancy by a safe, natural method of birth control.

All are welcome to attend free of charge. For details or to pre-register, please telephone Holy Cross Parish at 905-873-1887.



... Lend Me Your Ears

By Cory Soal R.H.A.D.

WHAT FINANCIAL ASSISTANCE IS AVAILABLE WHEN PURCHASING A HEARING AID?

The Ministry of Health's Assistive Devices Program (ADP) provides some assistance to both children and adults. For further information you may contact 1-800-268-6021 or ask your hearing Instrument Practitioner for the Assistive Device Pamphlet.

Medical plans through employers, Workers Compensation, Veterans Affairs Canada, and private Insurance Companies cover many Ontario residents for hearing aids. Your Hearing Instrument Practitioner will be pleased to assist you in determining what coverage you might have.

For further information, feel free to call...

The HEARING CLINIC
We care about your hearing!

Professional Arts Building
 99 Sinclair Ave., Suite 210
 Georgetown
 (905) 873-6642



Lease and finance offers are available, on approved credit, only through Honda Canada Finance Inc., until October 31, 2001. Lease payments shown are for 48 months and include \$850 for freight and P.D.E. with 96,000 km allowance (12¢/km exceeding 96,000 km applies). *Based on a new 2002 Accord Sedan SE, 4-Cyl. Automatic/Accord Sedan SE, V6 Automatic/Civic Sedan DX-G, 5-Speed/Civic Coupe LX, 5-Speed (model CG5672P/CG1662E/ES1542PX/EM2152P) \$318/\$358/\$228/\$238 per month for 48 months. A.L.R. 6.8%/8.4%/8.4%/8.4% (total lease obligation of \$15,264/\$17,184/\$10,944/\$11,424). Down payment or equivalent trade of \$3,397/\$4,358/\$2,622/\$2,723, (zero down payment plans available), plus first monthly payment and security deposit (\$375/\$425/\$275/\$275). Option to purchase at lease end for \$12,900/\$14,150/\$8,925/\$9,050 plus taxes. *M.S.R.P. does not include freight and P.D.E. (\$850). # 5.8% conventional financing is available on all new 2001 CR-Vs for 24, 36, 48 or 60 month terms. Financing example: \$20,000 at 5.8% per annum equals \$384.80 per month for 60 months. C.O.B. is \$3,088.00 for a total obligation of \$23,088.00. Down payment may be required. †# Taxes, licence, insurance, administration and maintenance fees are additional. Dealer may lease/sell for less. If your dealer does not have the 2002 vehicle you want in stock, the dealer will gladly order it for you. †Value Price Advantage is based on a comparison between the 2002 Accord LX (CG5542P & CG5642P) and the 2002 Accord Special Edition 4-Cyl. (CG5572P & CG5672P). Special Edition features value is \$3,890, incremental price for features is \$1,800, Value Pricing Advantage is \$2,090. See your neighbourhood Ontario Honda Dealer for details.