

RE/MAX

BLUE SPRINGS REALTY (HALTON) CORP.

www.remax-bluesprings-on.com

360 GUELPH ST., GEORGETOWN - (905) 877-5211
 • 2 MILL ST. EAST, ACTON - (519) 853-2086
 • 106 MAIN ST. N., ROCKWOOD - (519) 856-4348 • ERIN (519) 833-7117



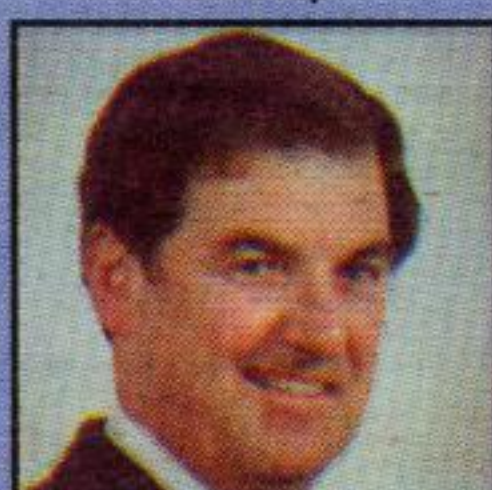
OUTSTANDING



MIKE ADAMS*
Sales Rep.



PAT AKERS*
Sales Rep.



LARRY BARNSTAPLE*
Sales Rep.



MICHAEL BARON*
Sales Rep.



JOHN BARTLETT*
Sales Rep.



DAVE BRAIDA*
Sales Rep.



GORD DAWE**
Assoc. Broker



MICHELE DAWE*
Sales Rep.



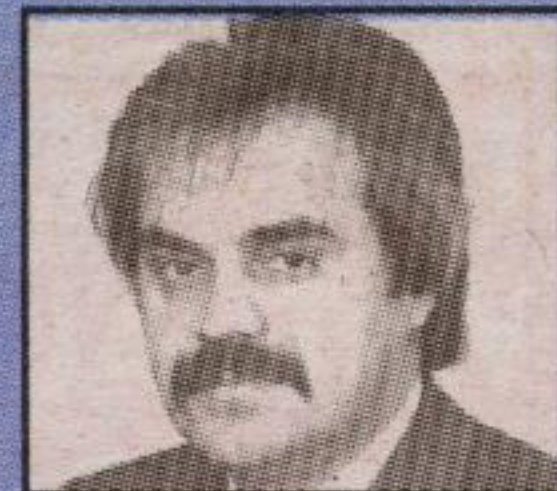
YVAN DESJARDINS*
Sales Rep.



JANIS GAREL**
Associate Broker



JACKIE HOLIGROCKI*
Sales Rep.



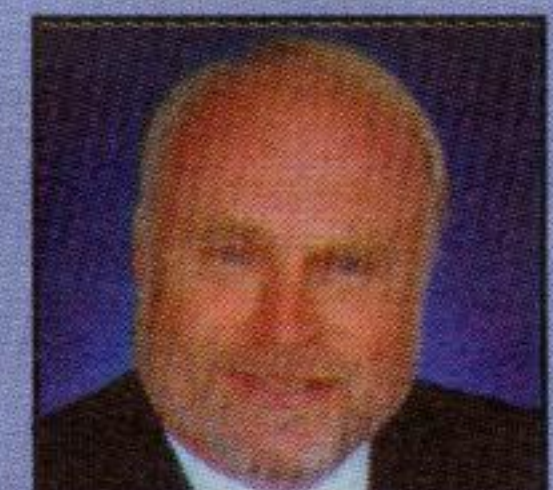
PETER HRKAC*
Sales Rep.



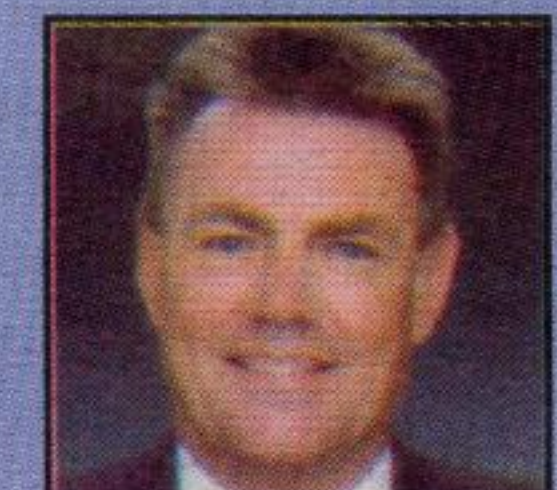
YVONNE HRKAC*
Sales Rep.



NORINNE KILGOUR*
Sales Rep.



DAVE KRAUSE*
Sales Rep.



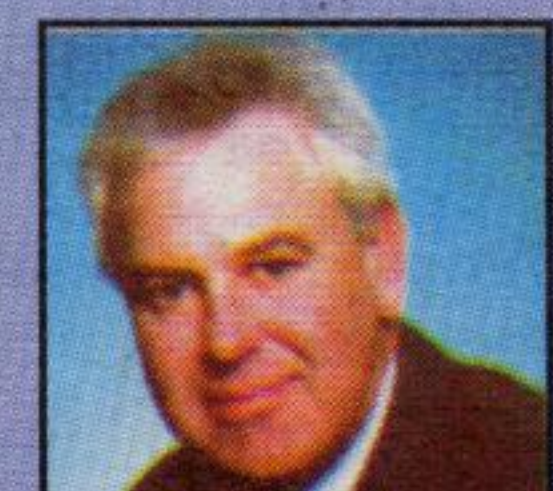
BILL McKEOWN**
Assoc. Broker



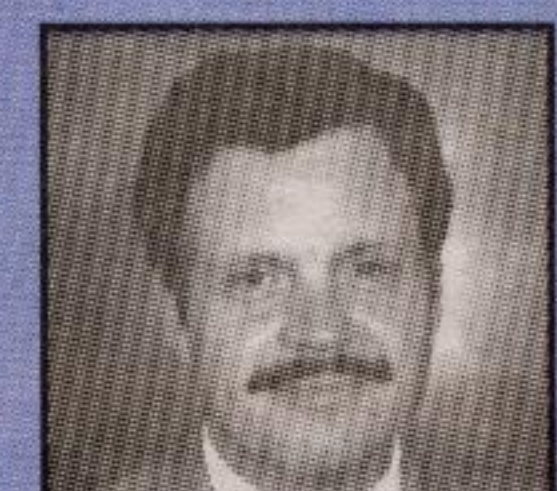
JANET McKEOWN*
Sales Rep.



RYCHAR McKEOWN*
Sales Rep.



ALAN MCPHEDRAN*
Sales Rep.



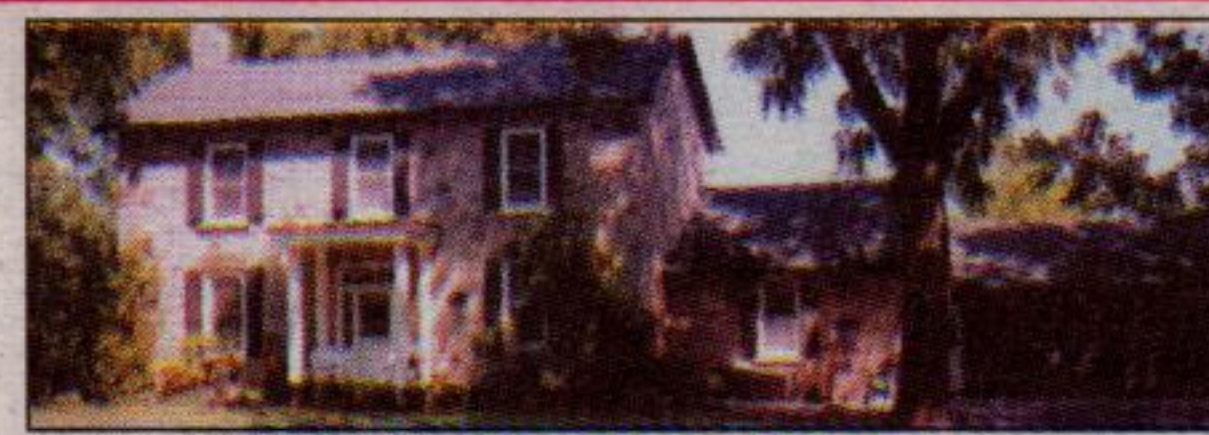
DOUG MEAL*
Sales Rep.

OUR FEATURES THIS WEEK!!



NEW
GLEN WILLIAMS CUSTOM SPANISH RETREAT
 Very unique custom spanish hacienda in Glen Williams on a .68 acre private lot at the end of a cul-de-sac. 3 bdrm, 2 baths, 2 balconies, 4 walkouts, nicely landscaped. \$\$\$ in upgrades, 2 furnaces, 220 service, extra long single car garage, circular drive, was a 2 family home (easily converted back), central iron gated courtyard with fountain. This is a must see!!! \$354,900.

RYCHARD McKEOWN* Sales Rep.
877-5211



CENTURY STONE ESTATE
 Welcome to "Graystone" Manor. A 10+ acre country estate located min. to Guelph and Hwy 401 in Puslinch. The home is a 100 yr old stone house completely remodeled and updated - 3 bdrms, 3 baths, formal liv. rm, din. rm and den. Mn flr. fam. rm has w/o to deck & inground pool with large gazebo surrounded by mature trees, walking trails and a small barn for horses. This gives all the privacy you would want. Rarely does a property like this come along - call to view this "Dream Come True" estate.

ALLAN MCPHEDRAN* Sales Rep.
519-856-4348
 1-888-656-4348



\$264,900
HIGHLY RECOMMENDED
 • 40 ft lot - fenced yard • 2 car garage - double driveway
 • 3 spacious bedrooms - office/study area
 • eat-in kitchen - walkout to yard
 • main floor family room - gas fireplace
 • gleaming hardwood - ceramics - upgraded broadloom

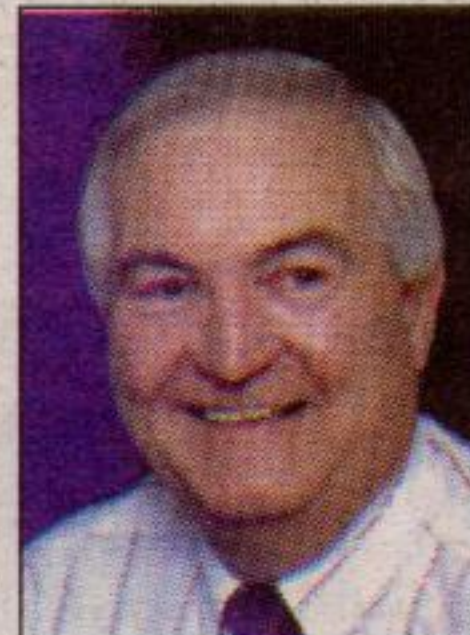
DOUG MEAL* Sales Rep.
877-5211
www.remax-bluesprings-on.com



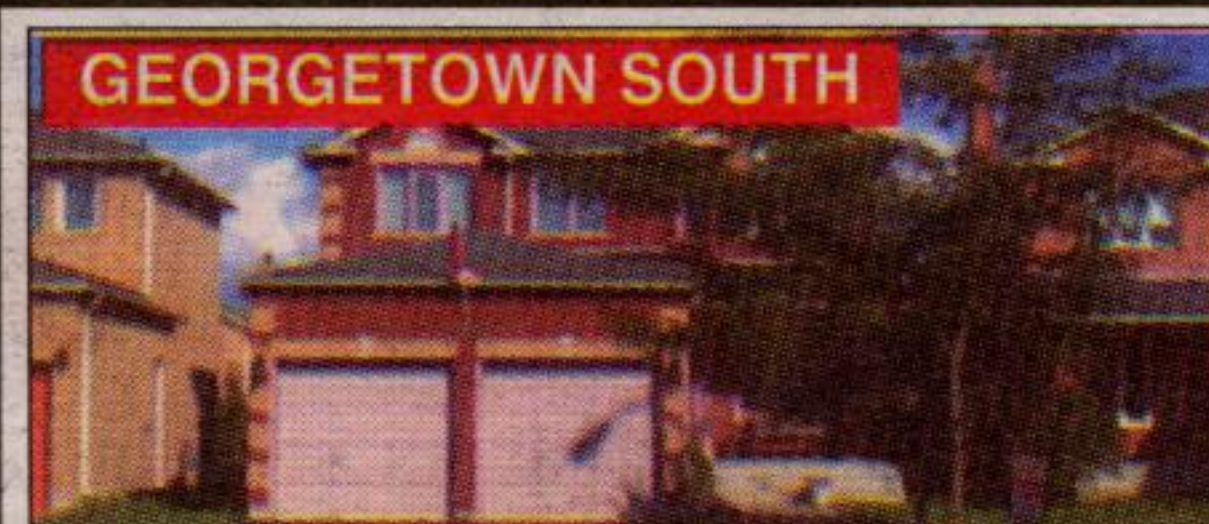
1.85 ACRES IN HALTON HILLS - \$264,500
 Panoramic hilltop views from every room of this spacious country home. Features 3 bedrooms plus a main floor inlaw suite, gorgeous renovated bath with a 6 jet jacuzzi tub, new Pergo floor in large eat-in kitchen, new broadloom, almost all new windows have been replaced, central air, 2 furnaces, 2 large outbuildings and much more. Excellent value!!

YVONNE HRKAC* Sales Rep.
877-5211

CALEDON-ERIN-HALTON PROPERTIES
 Here's a Dot Com That Works!



WWW.BOBOLIVER.COM
 Bob Oliver, Sales Representative,
 Remax Blue Springs (Halton) Corp.
www.boboliver.com Toll Free 888-799-2580



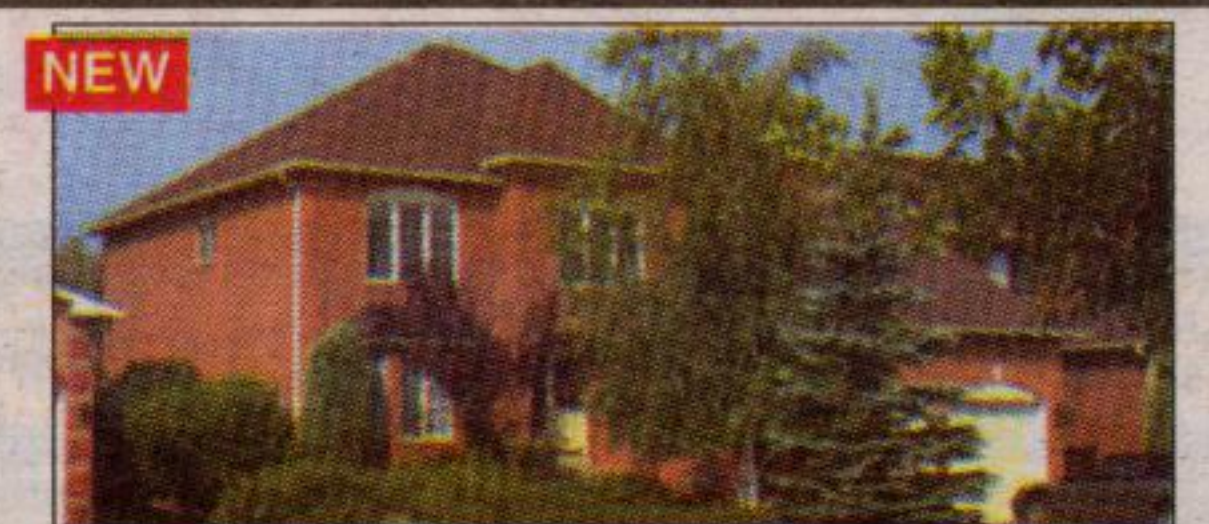
GEORGETOWN SOUTH
\$264,900
 2130 sq. ft. Berwick Tribute model, 4 bedroom/3 baths. Upgraded kitchen sink, faucets and cabinets. Great family home in South Georgetown. Home shows 10+-. Ceramic foyer, main floor laundry and family room with fireplace. Walkout from kitchen to fenced yard. Lots of extras and upgrades, central air, central vac. Do not miss out on this exceptional value.

NORM PAGET* Sales Rep.
877-5211

ATTENTION: BUILDERS & DEVELOPERS

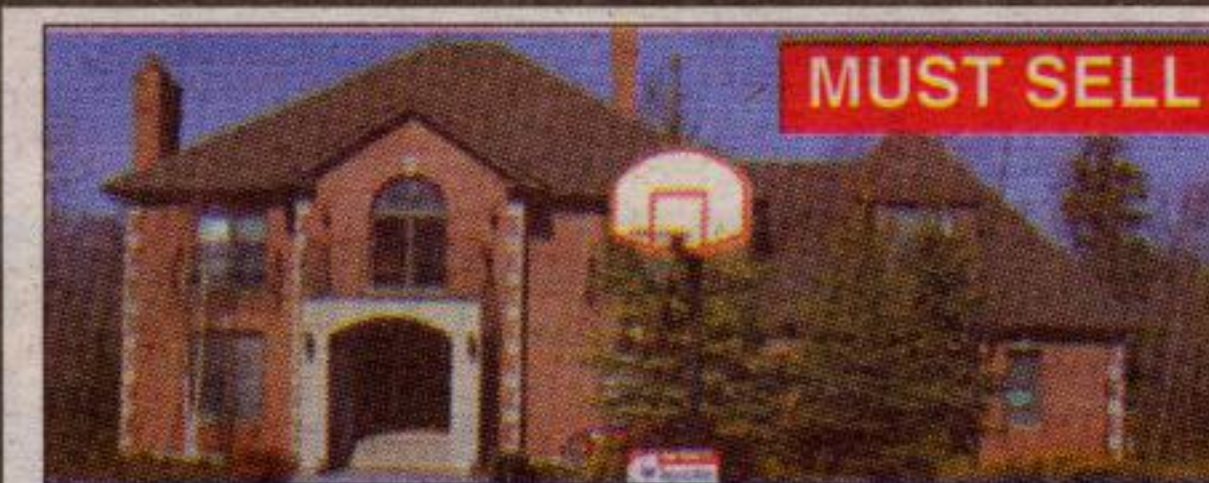
44 lot estate subdivision on 38 acres in Hillsburgh for \$1,375,000. Good, profitable project (ready for subdivision registration) with excellent terms available. Call Greg Panke* for a package or further information

GREG PANKE* Sales Rep.
877-5211



PERFECT FOR SOCIALIZING
 ~3200 sq. ft. Upgraded! 4 bdrm, 4 W.Rs. Hallmark pro. fin. bsmt with FP, wet bar, wine cellar and den. Mbdm with FP & sitting area. Greenhouse kit. with ceramic floor & walkout to patio & hot tub. Hardwood flrs. French doors. Coving. Family rm with gas FP & wet bar. Prof. landscaped front & rear. Sprinkler & security systems. \$389,900

MAUREEN PLUCINSKY* Sales Rep.
905-874-3051 1-800-834-5516
<http://maureen.ca>



MUST SELL
\$499,900
 Spectacular home on 10 acres north of Georgetown. 5000 sq. of luxury. 4 bdrms - the 1 could be a nanny suite, teenagers or elderly parent/s. Oak circular staircases up and down. Four fireplaces, 4 washrooms and a triple car garage. Extra, extra large kitchen with patio walkout to 70x16' deck. Ceramics throughout the home. Beautifully finished basement with walkout to outside and to garage as well as a hot tub. Call quickly, Donna Rae*.

DONNA RAE* Sales Rep.
877-5211



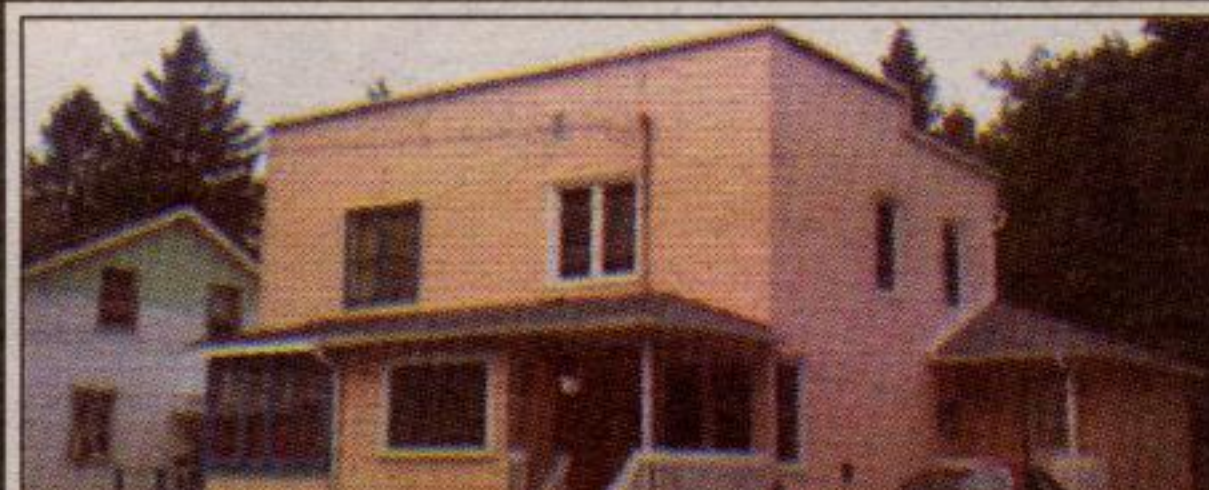
ROCKWOOD
ASKING \$309,000
 This 3+1 bedroom all brick bungalow has to be seen. Yes, the interior is just as appealing. Finished up and down with countless amenities, and situated on a quiet cul de sac on almost 1/2 an acre.

TIM ROWLAND* Sales Rep.
519-856-4348
 1-888-656-4348
 email: trowland@trebnet.com



\$469,900 **REDUCED**
BRIDLEWOOD ESTATES
 Custom 3000 sq. ft. 4 bedroom home on 2.59 treed acres with library plus family room with fireplace.

HEATHER SCOTLAND** Associate Broker
519-853-2086
 1-888-833-1945



GREAT LOCATION \$142,500
 Upgraded beauty with pretty back yard and parking for two cars. Newer eat-in kitchen. Family room gas fireplace and more. Call me quickly.

JENNIE STANHOPE* Sales Rep.
519-856-4348
 1-888-656-4348



NEW \$253,000
BRAND NEW...ALMOST
 Beautifully decorated 3 bdrm, 3 bath home located on a quiet street in Georgetown is open concept and loaded with upgrades. Special features include a laundry room on same level as bdrms, 7 in. baseboards, carpet and ceramic flooring, cathedral ceiling, gas FP, cen. air, clad windows, dbl garage, interlocking stone walkway and a fully fenced rear yard landscaped with small pond.

CAROL WALRAVEN* Sales Rep.
877-5211



TERRA COTTA
 • 1/2 acre lot • Main floor family room
 • Private road • Main floor laundry
 • Large 1500 sq. ft. bungalow
 • Generous modern kitchen
 • \$184,000

KATHLEEN WALSH* Sales Rep.
877-5211



NEW \$449,900
PRIVATE SETTING
 Custom built 3000 sq. ft., 4 bedroom sidesplit with 5.9 acres of seclusion, pond & conservation.

LEIGH WHITING** Associate Broker
519-853-2086
 1-888-833-1945