



DONNA RAE* *Sales Rep.

877-5211



BLUE SPRINGS REALTY (Halton) CORP.

360 Guelph Street, Georgetown



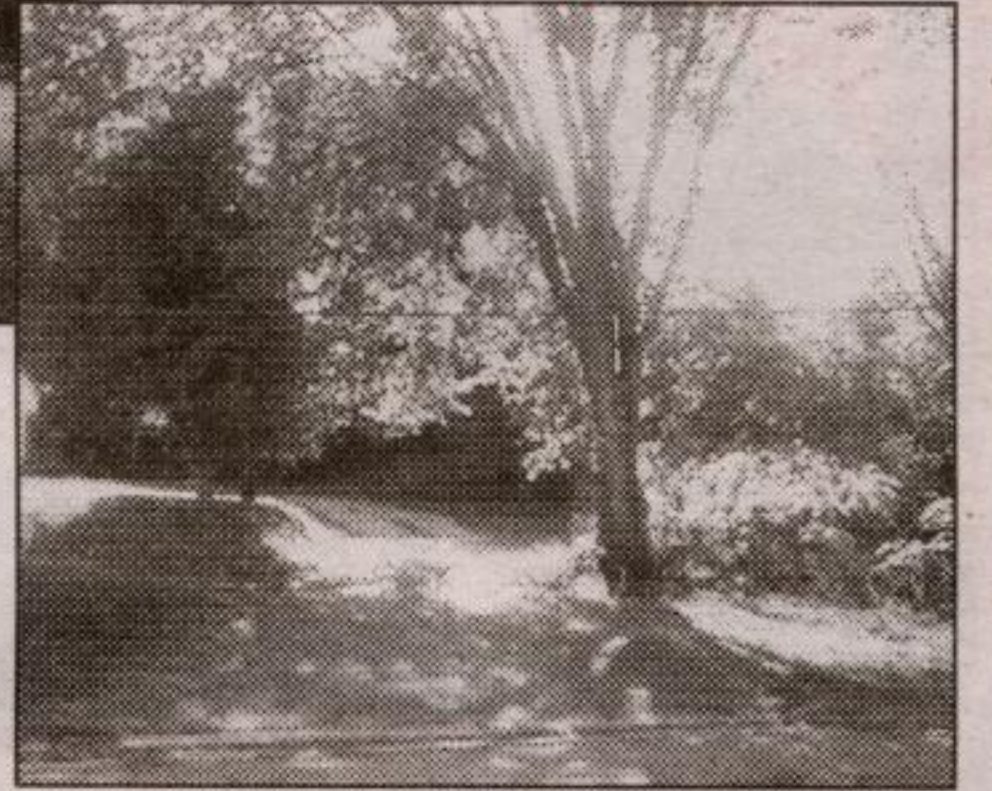
\$499,000

Spectacular home on 10 acres north of Georgetown. 5000 sq. ft. of luxury. 4 bdrms - the 1 could be a nanny suite, teenagers or elderly parent/s. Oak circular staircases up and down. Four fireplaces, 4 washrooms and a triple car garage. Extra, extra large kitchen with patio walkout to 7-x16' deck. Ceramics throughout the home. Beautifully finished basement with walkout to outside and to garage as well as a hot tub. Call quickly, **Donna Rae***.



STEWARTTOWN
\$179,900

1-1/2 storey 3 bedroom home on very large lot. Minutes from town but country feeling. Large mature trees and plenty of space for parking. Large eat-in country kitchen. Separate dining room. Open concept at the top of the stairway that could be converted to a 4th bedroom or computer area etc. Newer windows throughout. Curb appeal. Call **Donna Rae*** for a personal viewing.



GLEN WILLIAMS
\$259,900

4 level backsplitted, 3 bedroom home on large lot. Eat-in kitchen with patio walkout to deck. Wood fireplace and gas fireplace. Home is on town water. Hardwood floors throughout, finished basement and laundry room on second level for convenience. Carport at the front as well as a detached 2 car garage at the side of the home. Be sure to call for a personal viewing. **Donna Rae***.



IRIS IRWIN* Sales Rep.

"When Performance Counts . . . Count on a Top Performer!"

Website: www.results-net.com/haltonhills



"BUSINESS OF THE YEAR"



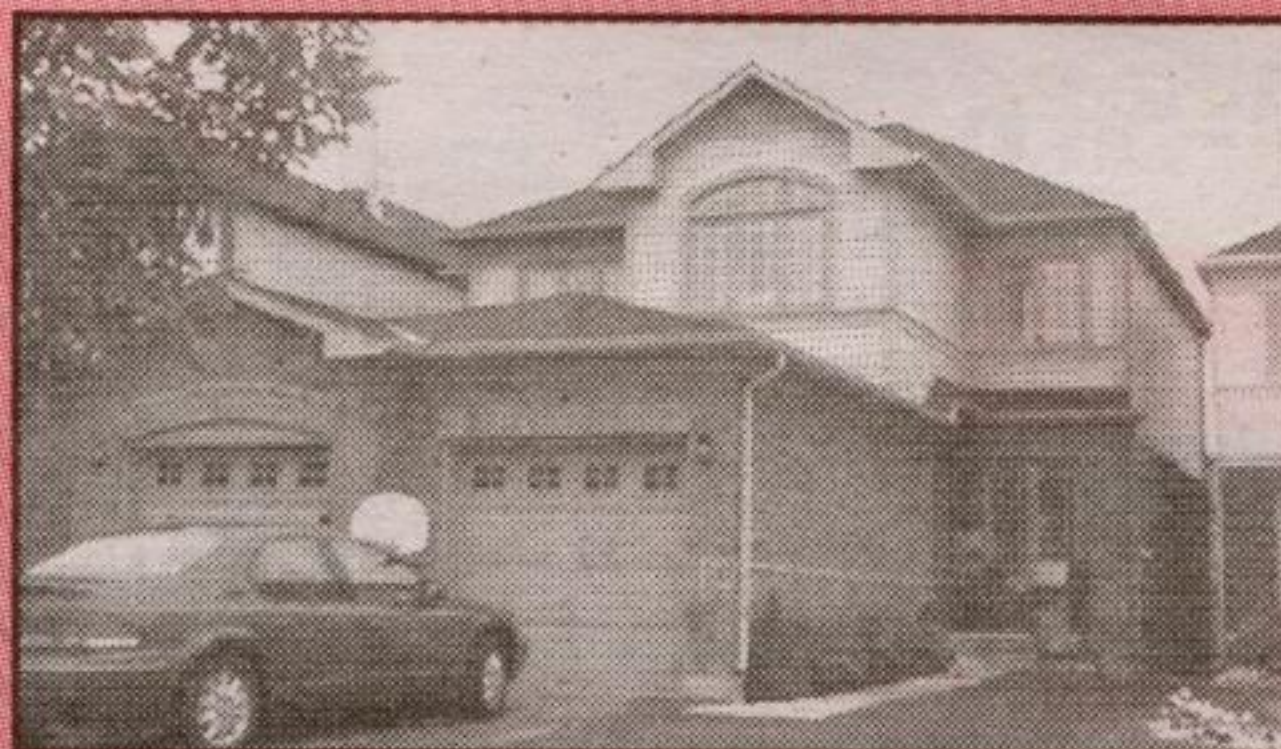
Johnson Associates
HALTON LTD., REALTOR

877-5165



LOCATION PLUS!! - THE "PARK" AREA

Quality built 4 bedroom home on a 67' lot, fenced and with mature trees. Elegant and spacious open concept with fabulous maple kitchen, ceramics from foyer through kitchen/breakfast area and walkout to deck. Family room has corner gas fireplace. Bedrooms all great size, master has large ensuite, walk-in closet. Plush neutral broadloom throughout, unfin. basement. Wonderful street close to Park school, downtown, golf club. For exclusive showing call Iris*. \$326,000. 01-432-30



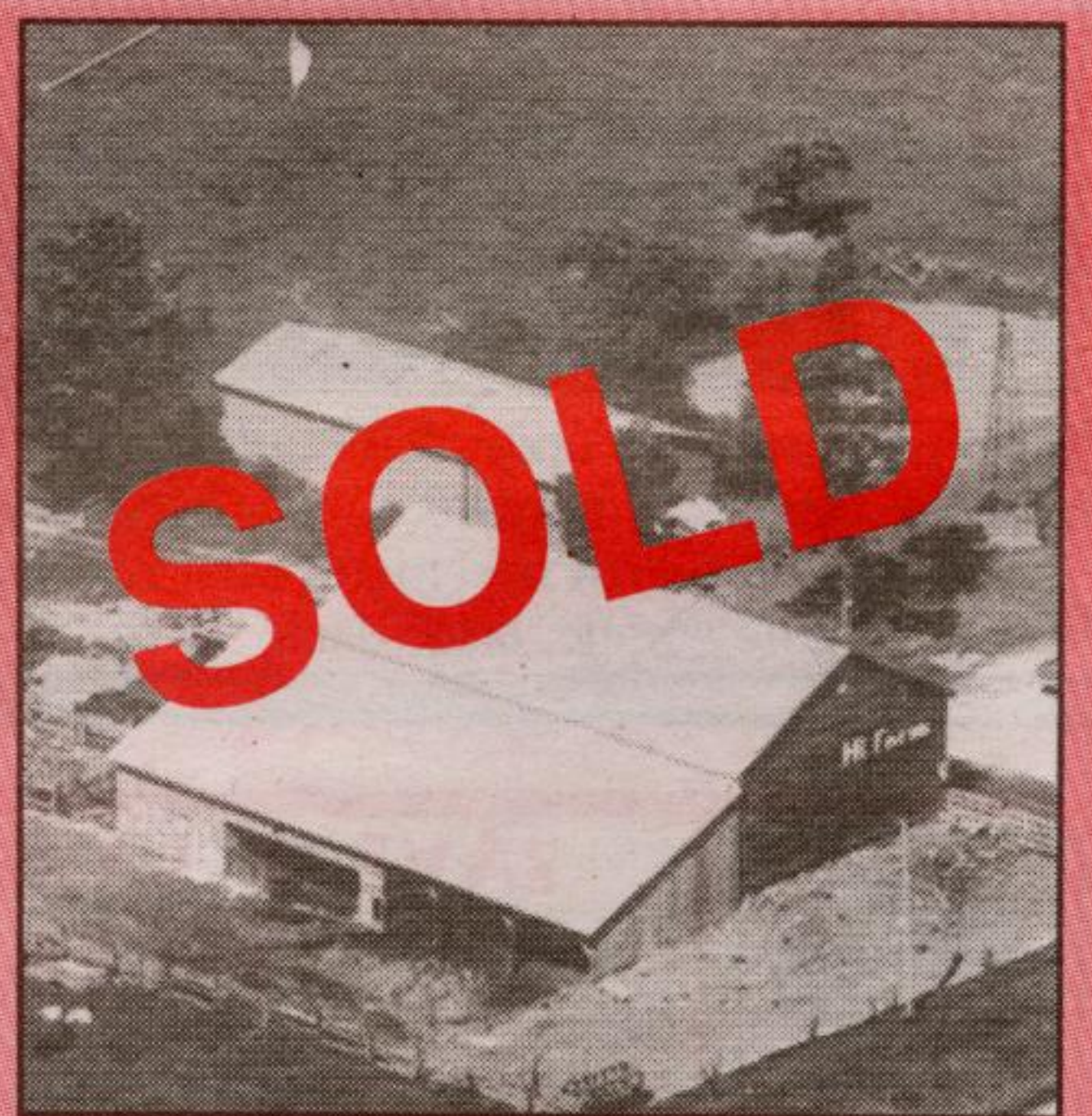
NEW!!! GEORGETOWN SOUTH SEMI IN NEW CONDITION

On a quiet little street close to new plaza and new schools this 3 bdrm semi is in immaculate move-in condition. Recently decorated, open concept great room and lovely kitchen with bleached oak cabinets, walkout from dining area to gorgeous 2 tier PT deck and fully fenced (privacy fencing) yard. Spacious bdrms, 4 piece and 2 pce powder room. Basement has laundry area, lots of storage and ready for your finishing touches. Central air, 4 appliances included, garden shed and much more. \$189,500. Quick closing possible. 01-537-30



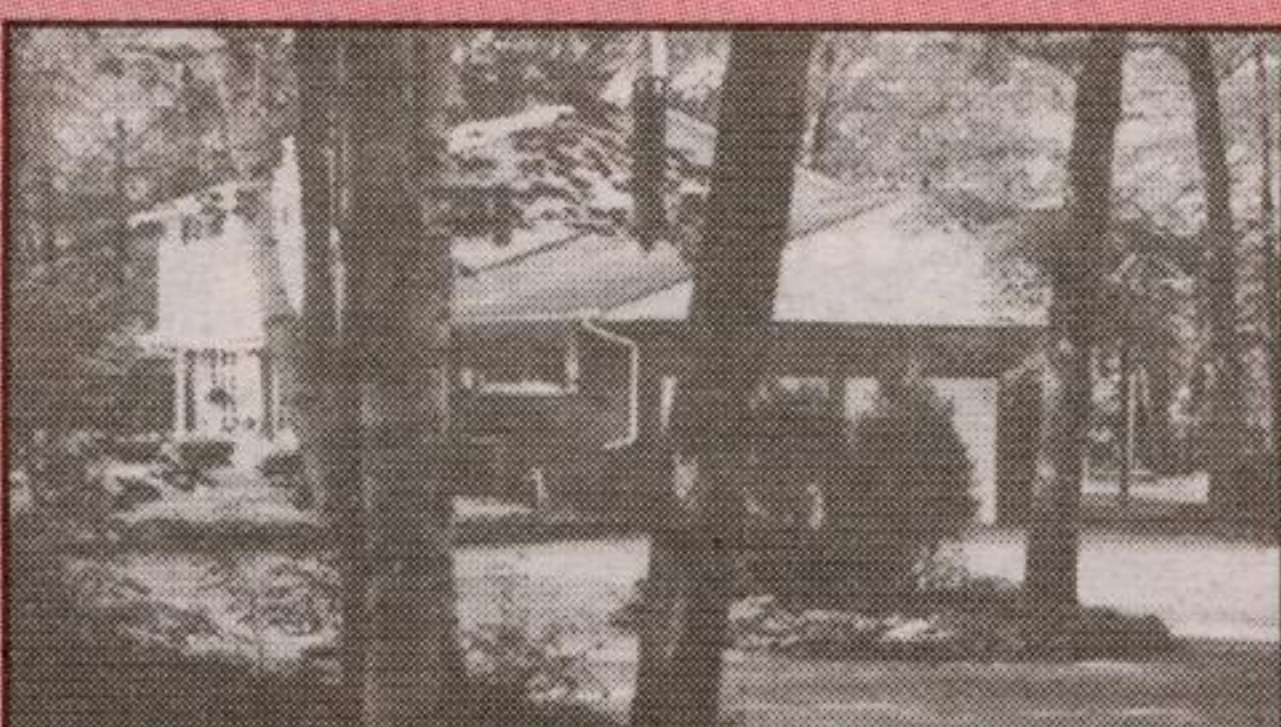
COSY AND CHARMING CLOSE TO "GO"!!!

Lovely older home on a super large lot - 50' x 132' walking distance to GO train and close to schools, downtown. Updates include gas furnace, shingles, basement windows replaced. Main level has lovely hardwood flooring, sunroom off large country kitchen, original trim, etc. 3 pce bathroom, separate entrance to basement. Verandah at the front and covered porch at back. Easy to love and priced slashed to \$169,000.



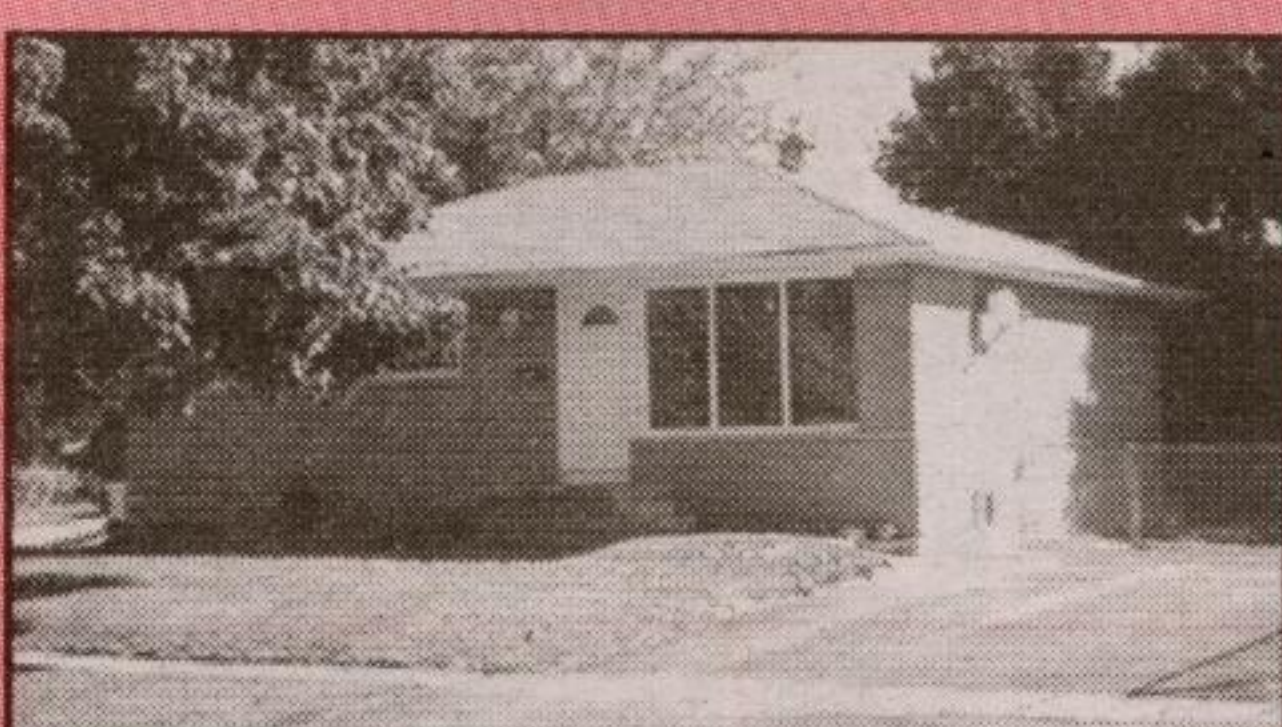
NEW!!! - 3 BEDROOM IN BRAMPTON

Backing onto park with 60' frontage. Quiet street close to downtown, shops, schools. Cosy bungalow with new furnace (fall 2000), updated 200 amp hydro service, recent shingles, hardwood flooring on the main level, open concept living/dining room. Basement ready for your finishing touches with separate entrance. Great buy at \$190,000. 01-543-19



UNIQUE COUNTRY PROPERTY GEORGETOWN

Wooded wonderland - 1.6 acres on ravine, backing onto Black Creek, close to Bruce Trail and 5 mins. to town. Special private lot well set back from the road with gracious 5 bdrm executive home. Large principal rooms, finished walkout basement. New Barzotti kitchen has fabulous sunroom addition with floor to ceiling windows offering amazing views of the property any season of the year. Mexican clay tiled floor, hardwood on main and upper levels, new ensuite in master, new heating/CAC, 2 fireplaces, main floor office/den, 900 sq. ft. deck, flagstone walkways, slate floor in foyer. Superb location - area of fine homes. For photos check homestore.ca/toronto/iriswin. 01-475-31



NEW!!! - SWEETHEART BUNGALOW IN TOWN

Prime location, very quiet and close to schools, park, etc. 3 bedroom bungalow with nanny flat in basement (2 bdrms, separate entrance). Upgrades: windows, doors, fabulous oak kitchen, furnace, central air, shingles, eaves, soffits. It's all done. Just move in and asking \$189,000. Call Iris*.

