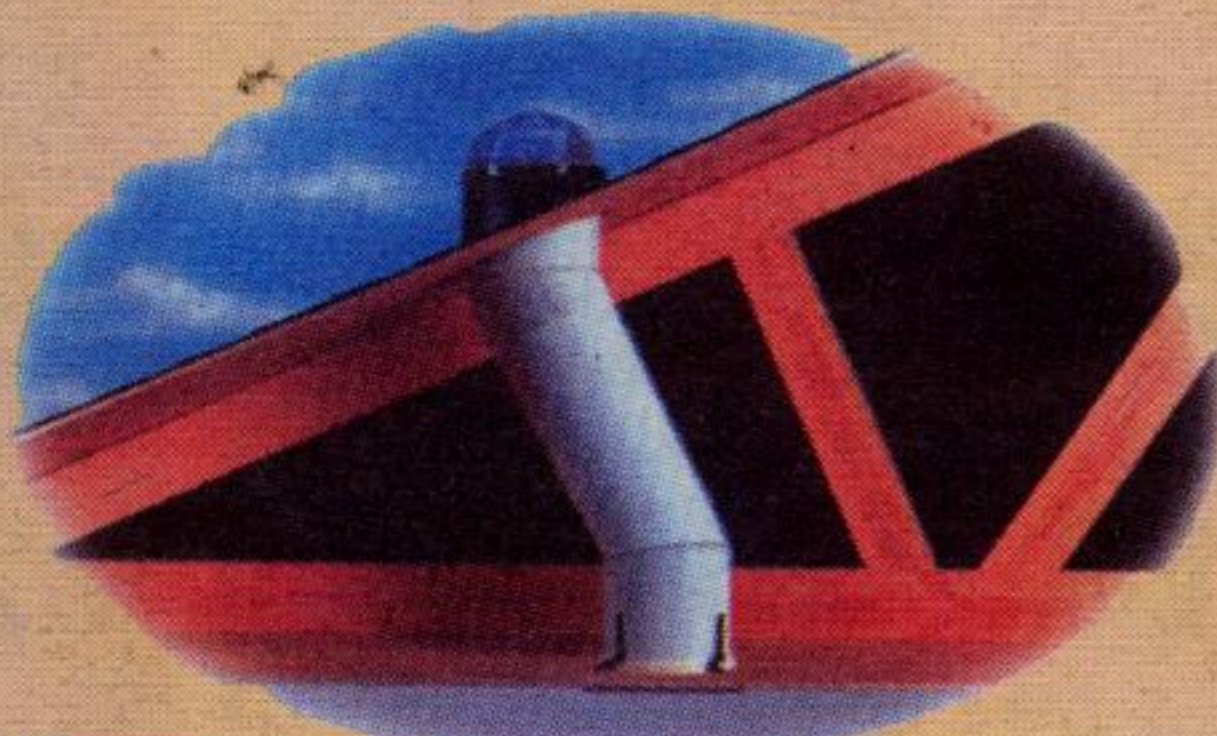


# Let the Sunshine in "Without the Heat"

Summer Special **\$635.** installed

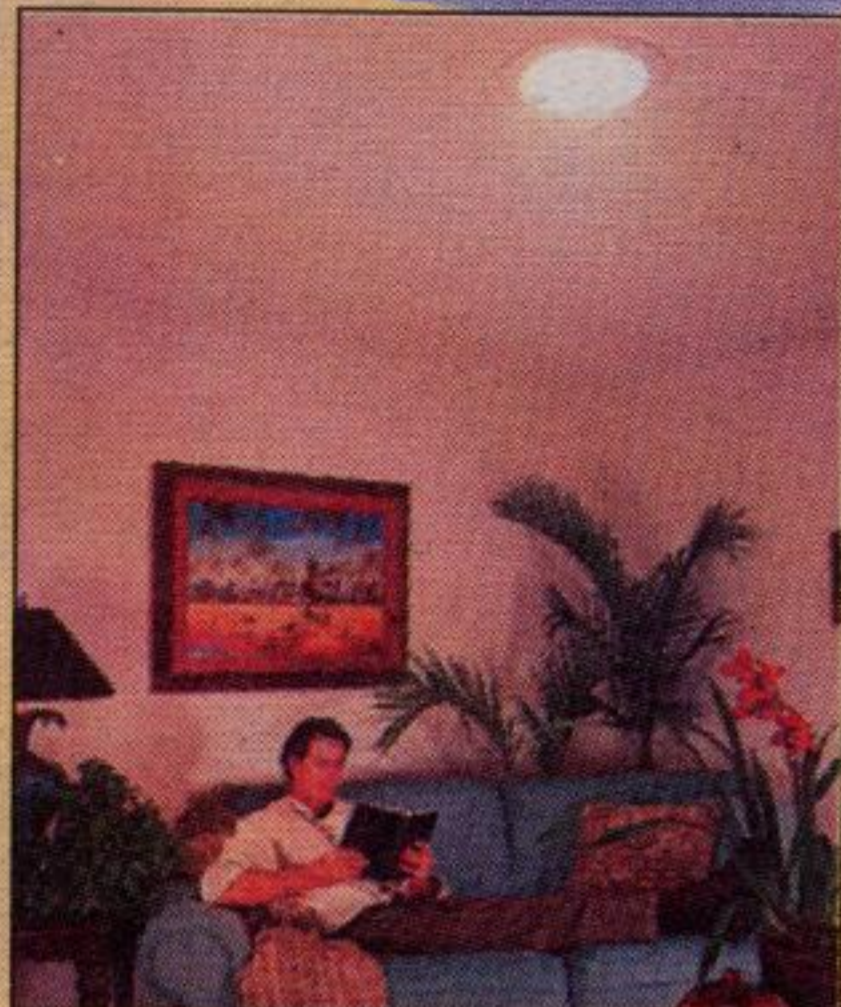
## SOLATUBE. THE MIRACLE SKYLIGHT™



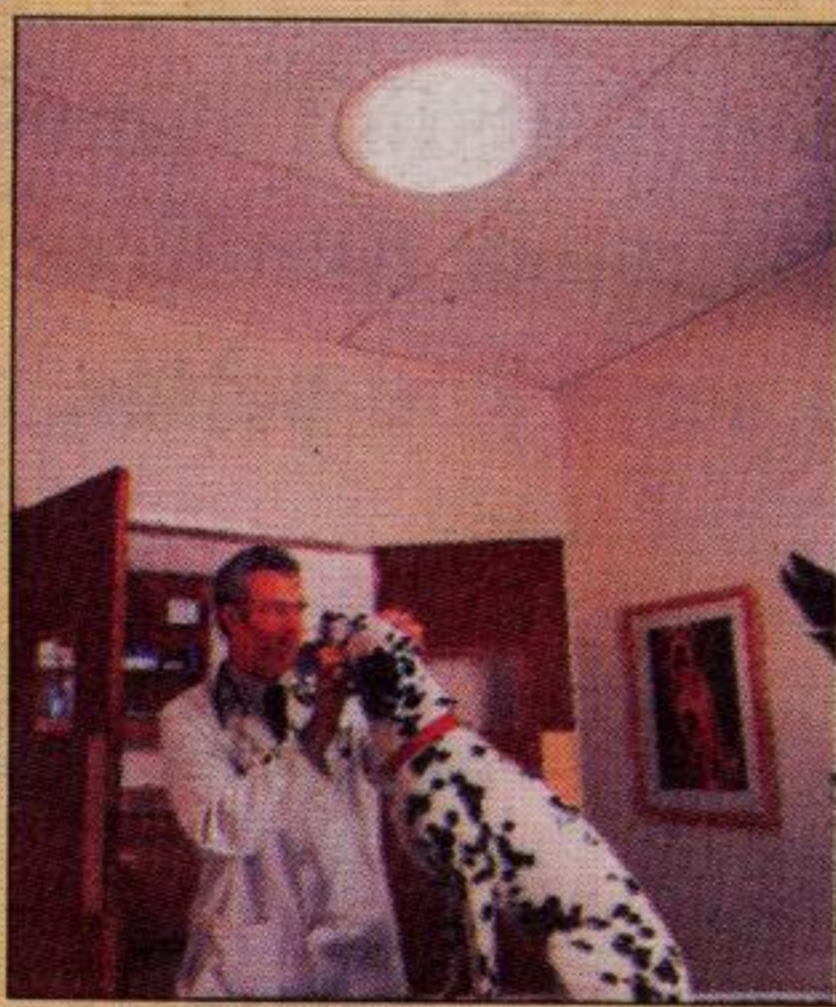
A Solatube skylight is the quickest, easiest, way to bathe the dark parts of your house in radiant, natural light. It's ingenious, patented design features super-reflective, space-age materials that capture and channel maximum light directly where needed. Great for dreary rooms, hallways and closets and more.

Compare solatube with any other skylight. You'll see the difference is night and day.

- Illuminates up to 150 sq. ft. from just a 10" curricular light source
- Much more affordable than conventional skylights
- Unique adjustable design fits virtually any attic space
- Installs easily in about 2 hours without major construction
- 10-year product warranty
- 1/4 million units installed worldwide



HOME



BUSINESS



OFFICE

**INDOOR DAYLIGHT**  
WE LET THE SUNSHINE IN

Introductory Special for July & Aug. We pay the GST

27A Main St. S.  
Georgetown, Ont.

**905-702-7719**

# Drafty windows dampen spirits

Drafty windows are no fun during the winter. Fall is the perfect time to fix those drafty windows. In addition to caulking, weatherstripping is an easy, energy-saving project. You will find weatherstripping at many hardware stores and home improvement centers. The money that you spend on these supplies will be worth it when it comes to saving money on your utility bills.

Double-hung windows have channels that allow the windows to slide up and down. Channel stripping, weatherstripping made for such windows, is the best option. Channel stripping made of metal is sturdy and easy to install. First cut two strips equal to the height of the lower sash, plus an inch. Then raise the lower sash and put a strip into the channel on each side. Keep feeding the strip into the channel until the extra inch is above the sash. Nail the stripping into the channel so that the nails are flush or below the surface. Close the sash and nail the upper inch of the stripping. Then pry the free edge of the stripping slightly so it will press tightly when the window is closed.

When installing stripping on the upper sash, make sure that you drive nails into both edges of the upper strips that lie next to the pulleys. This will keep the free edges from catching against the top when the window is raised.

Do not forget the stripping along the top of the upper sash and bottom of the lower sash. Apply stripping along the upper and lower sash where they meet the window. If you can get to the exterior, mount stripping on the outer edge of the inner sash with the crease pointing down. If you cannot reach the exterior, attach the

strip across the lower indoor-facing edge of the upper sash with the crease pointing down.

If you prefer, you can use channel stripping with an adhesive backing or vinyl stripping which also has an adhesive backing. To install vinyl stripping, carefully position the strip in the channel. Tear off the paper while pushing the strip against the channel. Lower the sash and press that extra inch onto the sash. To apply weatherstripping to the upper sash, just repeat the process. If there are pulleys on the window, attach the strip above and below those pulleys.

Weatherstripping also comes as hollow or foam-filled vinyl tubing and felt or foam strips. Tubing is a great sealer and is durable. It must be attached to visible parts of the window so it should go on the outdoor side. Cut it into strips and place the strips so that the tube meets both the window and the frame. Do not put a strip across the middle of the window. Fasten the stripping with staples. Then stretch the stripping so it does not ripple. The easiest place to attach tubing, across the middle, is on the underside of the upper sash. However, remember, it will be seen.

Felt and foam strips are less expensive than tubing. They, too, must be attached to the visible parts of the window. However, you need to attach the strips to the inside of the window. You may use staples or tacks with felt stripping. The foam stripping probably has an adhesive back to it. Use the same technique for application as you did for the tubing, but put it on the inside. When applying it to the middle of the window, attach it to the top of the inner sash.

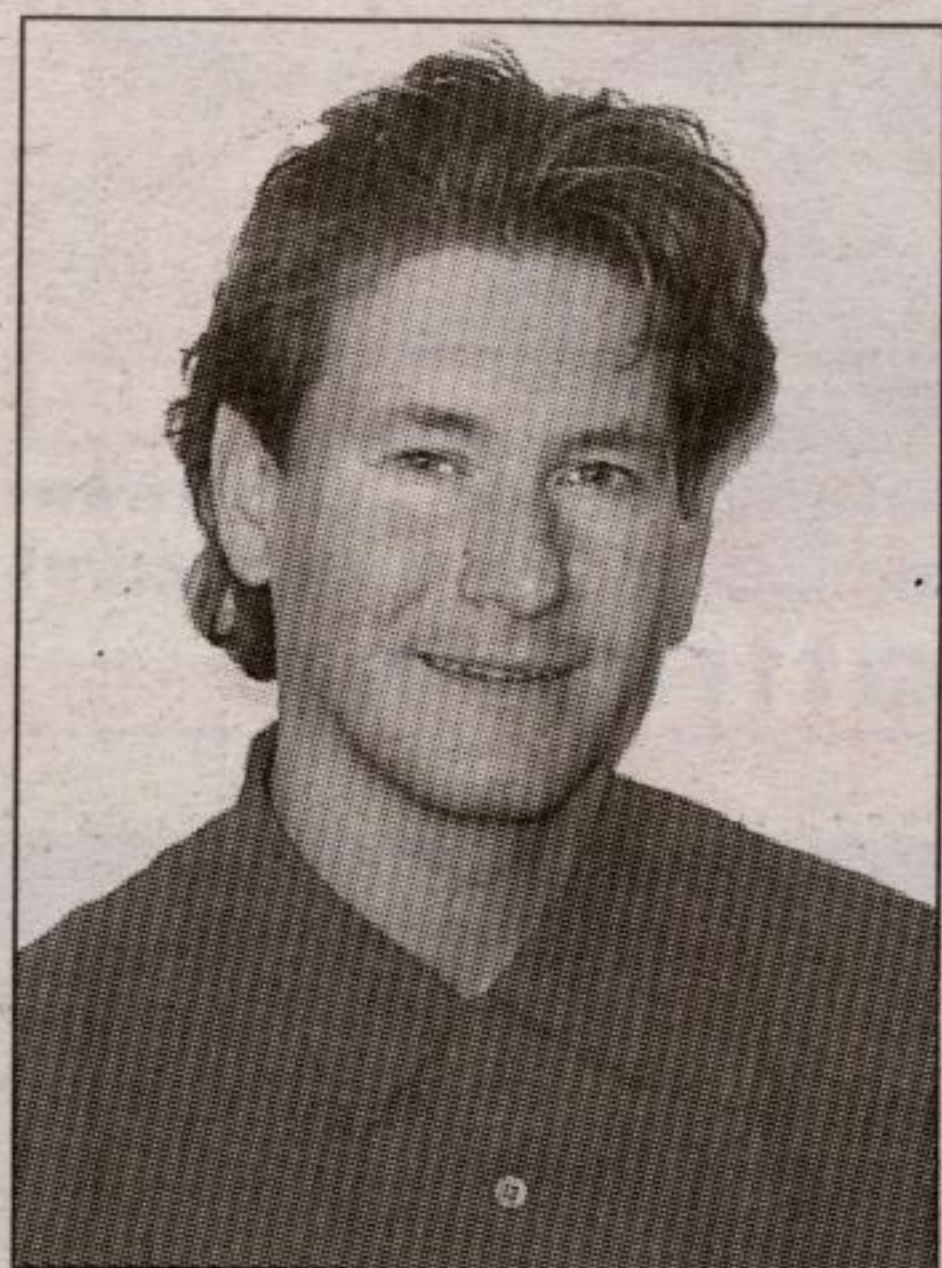
—By Kathy Scott, special

Finding the right home is hard... finding the right homeowners insurance is easy.



See State Farm Agent:

**PHIL KARDA**  
174 Guelph St.  
Georgetown  
**905-873-1833**



Fax: 905-873-1835  
email: phil.karda.c4be@statefarm.com

Like a good neighbor, State Farm is there.®

STATE FARM FIRE AND CASUALTY COMPANY ■ CANADIAN HEAD OFFICE: SCARBOROUGH, ONTARIO

## Leathertown LUMBER

WE DELIVER  
FAMILY OWNED  
AND OPERATED

264 MAIN ST. N. ACTON  
853-1970 Fax: (519) 853-2542  
Toronto Line: (416) 601-1259  
Mon. - Fri. 7 am - 6 pm  
Saturday 8 am - 4 pm



We carry a full line of  
Plumbing &  
Electrical  
Supplies

MINI PICKWICK **\$6.99**  
PINE PANELLING 14 sq. ft. bundle

KNOTTY PINE **\$14.49**  
8' LENGTHS 14 sq. ft. bundle

4'x8' PANELLING **\$11.99**  
each  
Choose from Lightwood Pecan,  
Northern Pine, Northwind

Beyond the Screen Door

VICTORIAN  
STYLE  
WOOD  
10% OFF  
IN STOCK  
ONLY  
CASH 'N  
CARRY  
BAYSIDE \$189.99 LAKESIDE \$129.99

ROUGH PINE  
Great for  
Board & Batten  
1 X 12  
**85¢**  
lin. ft.

Victoria  
Full Metal Post Caps

For exterior and interior use, these high quality post caps are the best choice. Full Metal post caps are designed for the best decks, the best fences and the best mailbox posts.



SICO  
FORMULA 77  
**\$25.99**  
3.78L

Building a Pole Barn?? Fax us your requirements



CONCRETE MIX  
**\$3.89** ea.  
RAPID POST  
**\$5.99** ea.

1x3 x 24"  
Clear Pine  
**\$4.99**  
8 pc. bundle

CRAFTERS PLYWOOD  
BAL TIC BIRCH  
5'x5'x1/8" **\$18.99** ea.  
5'x5'x1/4" **\$24.99** ea.  
5'x5'x1/2" **\$39.99** ea.

PRE-INVENTORY SALE  
SAVE UP TO 50%  
ON SELECTED ITEMS