

SOLD
DAVE KRAUSE
 Sales Rep.
RE/MAX
 Another service for my clients:
 Visit us at our WEBSITE www.davekrause.com
 E-MAIL us at: davekrause@aztec-net.com

877-5211
 Toronto
905-874-3051
 Erin
519-833-7117

RE/MAX BLUE SPRINGS REALTY (Halton) CORP.

TORONTO (905) 874-3051 GEORGETOWN (905) 877-5211 ERIN (519) 833-7117

Dave Krause supports The Children's Miracle Network



GO TO www.davekrause.com



NEW

FIRST TIME ON THE MARKET

This 1 1/2 storey brick & vinyl sided 3 bedroom home is located on a large circular lot & has enjoyed only one owner. Features include most new windows, newer roof & furnace, alum soffits, fascia and eaves, MF family room, 3 washrooms, finished basement, detached garage, lots of parking & shows pride of ownership. Priced at \$219,900. Call **Dave Krause*** to view.



BACKING ONTO GREENBELT

This 2980 sq. ft. home offers so much more than just 5 bedrooms!! Large foyer with 2 piece washroom, laundry room (with access to garage), fantastic kitchen with pantry, walk-out and open to family room with gas fireplace. Formal living/dining rooms and a den/office make up the main floor - combination of hardwood and ceramic flooring. Upstairs, you'll find the master bedroom with 5 piece ensuite, as well as 4 bedrooms and 2 full bathrooms. The basement is open for your ideas. Spacious family home on a quiet street. There's room for everyone at \$359,900. Call **Dave Krause***.



GREAT GULF MODEL HOME

Forget understated elegance. This 4 bedroom, 2-1/2 bathroom home on a professionally landscaped lot exudes quality in every inch of its 2,300 sq. ft. The large front window invites the sunshine in. The parquet floors and 40 oz. broadloom add warmth throughout this family home. Excellent layout for formal or informal entertaining. Truly a home to be envied at \$294,900. Call **Dave Krause*** to view.

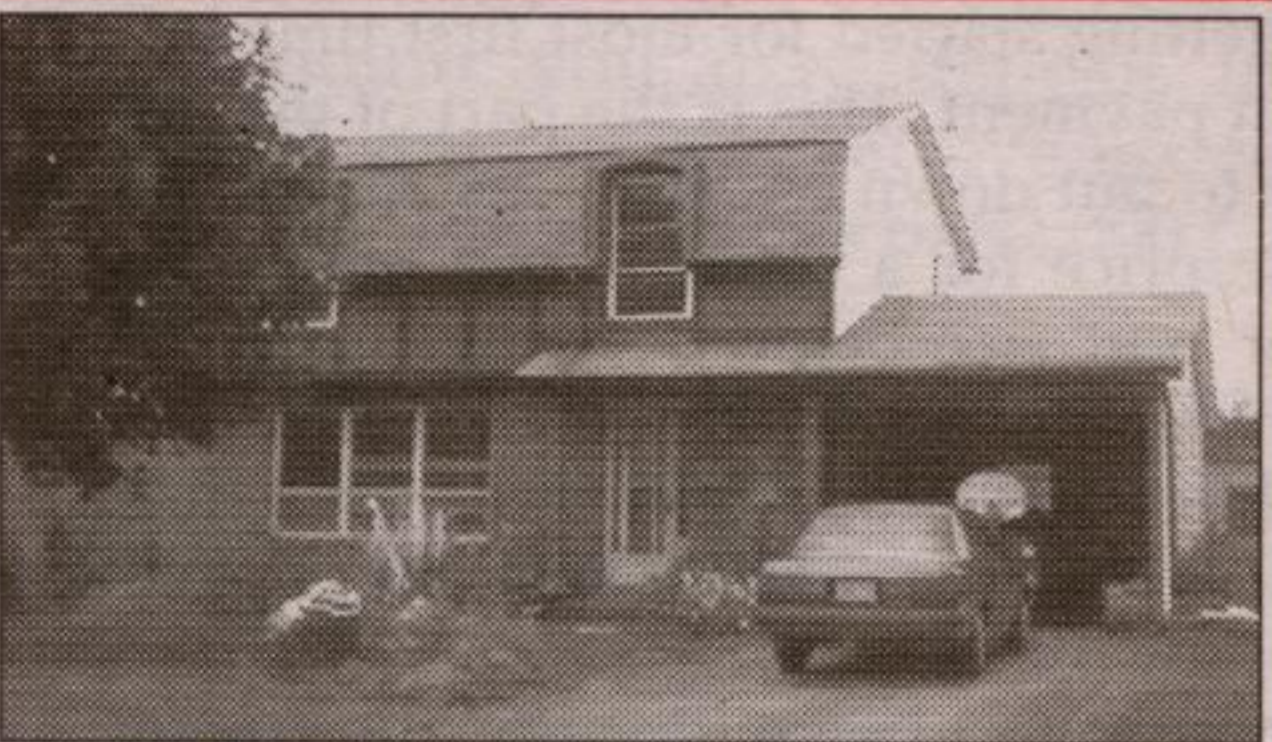
OPEN HOUSE - SUNDAY, SEPTEMBER 16, 1-4 p.m.
 145 Country Club Drive, Guelph
 Woodlawn/Victoria Area

NEW PRICE



LOVELY FAMILY WITH MANY UPGRADES

This 4 level brick and aluminum 3 bedroom sidesplit is located on a large lot on a quiet street and features the following: Eat-in kitchen with W/O to a 10x18 ft. deck. Large F/R with above ground windows, wood burning stove. Hardwood floors under broadloom. New carpet in den. Most windows replaced in 2001. Roof & gas furnace 5 years new. Lovely 7 x 19 ft. front porch. Priced at \$172,900. Call **Dave Krause*** to view.



BIG FAMILY? BIG HOME

This large 4 bedroom home is located within walking distance to public & high schools & parks. Large principle rooms. Kitchen has been opened up to L/R with W/O to a deck, above ground pool & very private backyard. New hardwood floors MBR & new broadloom in living room. Furnace new in 2000. C/A. Both washrooms have been renovated. Great family home close to all amenities. Call **Dave Krause*** to view. Priced at \$189,900.



SERENITY AMONG THE PINES

This fabulous custom built home of approx 7500 sq ft. is situated on 2.44 acres in Caledon East. Features include 6 bedrooms, 9 bathrooms, 18 skylights, 1050 3rd floor nanny suite, 20x40 indoor concrete pool with a spa & cedar sauna, 4 walkouts, treed ravine with stream. priced at \$898,000. Call **Dave Krause*** for other features & viewing appointments.



\$264,900

2130 sq. ft. Berwick Tribute model, 4 bedroom/3 bath. Upgraded kitchen sink, faucets and cabinets. Great family home in South Georgetown. Home shows 10++. Ceramic foyer, main floor laundry and family room with fireplace. Walk out from kitchen to fenced yard. Lots of extras and upgrades, central air, central vac. Do not miss out on this exceptional value. Call **Dave Krause*** to view.



ANOTHER HOME SOLD BY DAVE KRAUSE*



Janis Garel**

Winning Team

(519) **853-2086**

Toll Free 1-888-833-1945 E-mail: jgarel@trebnet.com
RE/MAX BLUE SPRINGS REALTY (Halton) CORP.

**Associate Broker **Sales Representative



Dave Braida*



NEW

DEVELOPMENT POTENTIAL

Excellent opportunity for development. 116.3 acres with highway frontage between Acton & Georgetown. Call Dave* for more information. \$699,000.



NEW

IN-LAW POTENTIAL

Bungalow in Burlington. Nice mature area. Oak kitchen, updated bathroom. Full basement plus rec room. Only \$189,900. Call Janis** for details.



HOME SWEET HOME...

Says it all, 3 spacious bedrooms, plus 4th in the bright basement with above grade windows. Eat-in kitchen plus combo living/dining room with walkout to deck overlooking treed backyard. 3 washrooms and main floor laundry. Look no further at \$179,900.00 it's a steal. Call Janis** or Dave* 853-2086.

LEATHERTOWN TAVERN

Be your own boss, thriving restaurant/bar business in downtown Acton. Established clientele. Favourable lease arrangements. Includes business and all chattels. Asking only \$79,900. Call Dave* for all the pertinent details.



NEW

YOUNG FAMILY REQUIRED

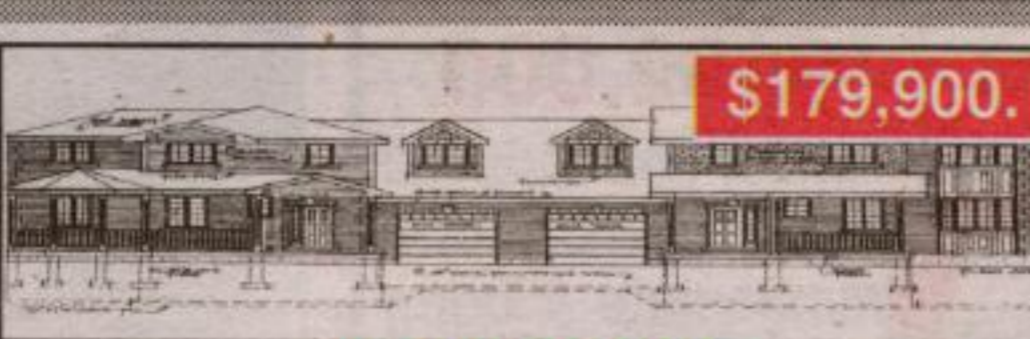
Nearly brand new, Chickadee model. Thousands in upgrades, 2 full baths, ceramics, Oak kitchen and more. Call Janis** or Dave*, 853-2086. Only \$205,000.



NEW

BOVIS BEAUTY

Well maintained by original owners. Renovations include Oak kitchen and 2 bathrooms. Oversized double garage. Upgraded broadloom. CAIR/CVAC and more. Asking \$229,900. Call Janis** or Dave*.



\$179,900.

TO BE BUILT

Two semi-detached homes in downtown Acton by Quality Custom Builder. Walk to shopping and church. Pick your own options & colours. \$179,900. Call Dave* or Janis**.



\$84,900.

10 ACRES

Erin Township residential building parcel. Road in, partially fenced & small shed on property.

Just Call for a Confidential Market Evaluation of Your Property



Wayne Saunders*
 Sales Rep.

RE/MAX Blue Springs Realty (Halton) Corp.

"YOUR TOWN & COUNTRY SPECIALIST"

Serving Wellington County & Halton

My Clients Are Number 1!

Phone: 1-519-856-4348 Toll Free -888-656-4348

12 Years Selling Properties Yard By Yard

Wayne offers Worldwide Web Exposure + Custom Virtual Tour of your property.



\$874,000

157 Country Acres

Just west of Acton and near Hwy. 7 this exceptional farm is now available. Extensive steel buildings, 2 ponds and 130 acres workable. Updated family home. Sure to please. Call **Wayne***.



\$148,900

Updated Home + In-Law Suite

Located in a mature neighbourhood in Fergus. Recent broadloom, some newer windows, updated electrical, updated Oak kitchen and lower level is completely finished and has kitchen & 3 pc. bath and large windows & 2 walkouts. Call **Wayne***.



\$234,900

Rockwood At Its Best!

Lovely restored Century home on oversized mature lot near the park. Upgrades include Oak kitchen, main floor laundry, restored pine floors, new central air and new shingles on home and double garage, yards are fully fenced. Hydro, plumbing, bathrooms, all updates. Home shows a "10" plus. Call **Wayne*** for more features of this fine property 856-4348.



\$264,900

Near Guelph Lake

Lovely bungalow on over 2 acre of privacy. Detached brick double garage and detached workshop for the hobbyist or professional. 36 x 34 insulation with oversized doors, 220 hydro, floor drain & much more. Home shows well, basement is finished, 2 bathrooms and includes central vac and satellite system. Call **Wayne***.



\$205,900

Make Rockwood Your Home!

Attractive, well cared for family home well layout with generous room sizes, main floor family room & gas fireplace, oak kitchen, dishwasher and much more. Gas furnace 7 years old. Huge landscaped property, 167 ft. deep by 66 ft. wide. Attached garage, 1 1/2 car garage, elect. door opener. Call **Wayne***.



\$334,900

Country Retreat 13.6 Acres

Lovely updated Scotch Block home in a treed setting complete with post & beam summer kitchen. Bank barn suitable for horses, spring fed pond and several small fields. Located north of Ospringe. Very private. Call **Wayne***.



\$334,900

LOTS TO BUILD ON!

\$76,900 one heavenly treed acre, 3 miles north of Hwy. 7 and west of Acton. No GST! Surrounded by forest.

\$73,900 Surrounded by pine trees & ready for your home. Located west of Ospringe on Hwy. 24.

Call **Wayne*** Now!!



\$176,900

Investors Delight

Legal boarding house in Guelph on bus route, near schools and plaza. Income \$25,000 yearly. Addition in 1993, updates include roof, windows, high eff. gas furnace, electrical, plumbing and much more. Backs onto park. Excellent Home. Suitable for large family, walkout bsmt. Call **Wayne***.

Just Call for a Confidential Market Evaluation of Your Property

Member of Toronto M.L.S., Brampton M.L.S. & Guelph M.L.S.

Member of Toronto M.L.S., Brampton M.L.S. & Guelph M.L.S.