

PARK MOTOR SALES

QUALITY, SELECTION & LOWER PRICES

FEATURE



1994 SENTRA XE

Taupe, 4 cyl., Auto, Air, Cruise, Tilt, Cassette

Stk. #T007A

\$7,988.

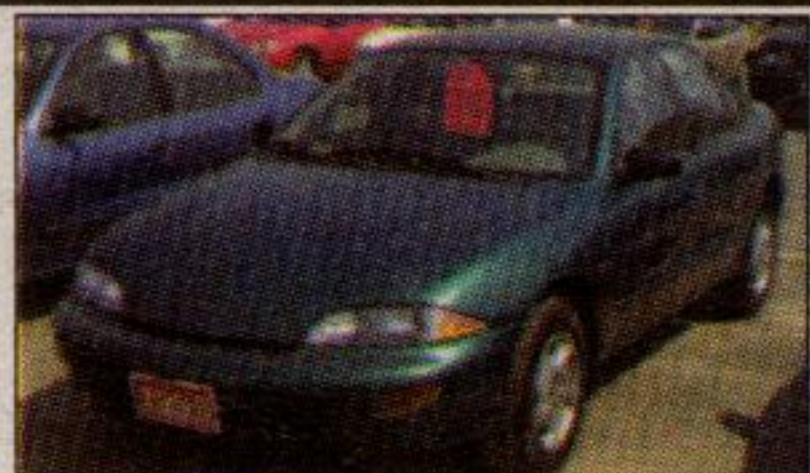
1996 WINDSTAR GL

Tan, V6, Auto, Air, PWLM, Cruise, Tilt, Cassette, Quads, Alloy Wheels

T0047

\$318⁸² mo. \$12,988.

FEATURE



1998 CAVALIER

Green, 4 cyl., Auto, Cassette

Stk. #C0043

\$9,988
^{250⁰⁰ mo.}



1998 INTRIGUE GLS

Black, V6, auto, air, ABS, PWLMS, cruise, tilt, Lthr., Alloy, Cassette/CD, Moonroof, Bose Audio

Stk. #C0048

\$16,988
^{414⁰⁰ mo.}

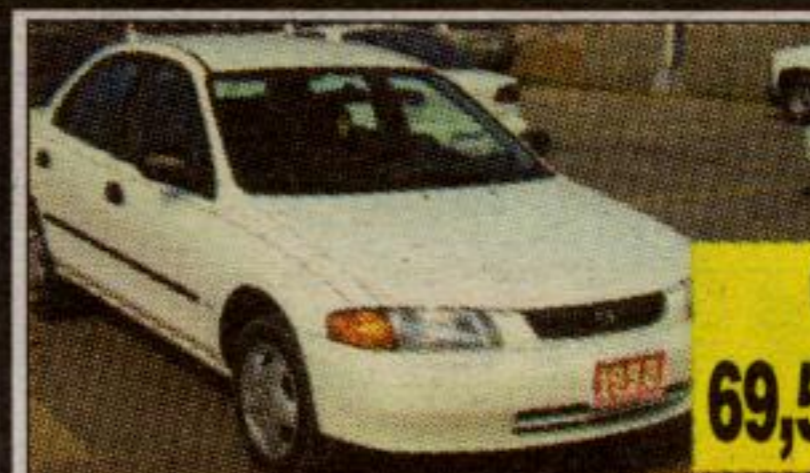


1998 MALIBU LS

Silver, V6, Auto, Air, ABS, tilt, cruise, PWL, PS, CD/Cass., Alloy

Stk. #P9250

\$12,988
^{318⁰⁰ mo.}



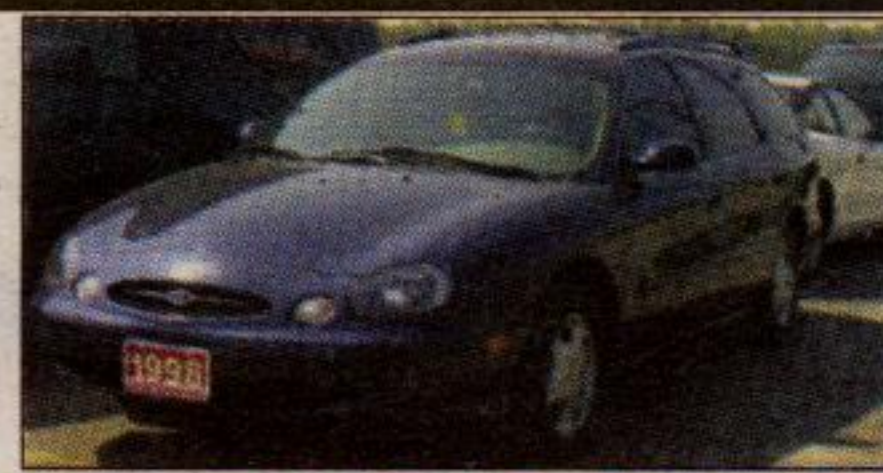
1998 PROTEGE SE

White, 4 cyl., Auto, CD

Stk. #C0049

Only
69,582 kms

\$10,688
^{263⁰⁰ mo.}



1998 TAURUS SE WGN.

Blue, V6, Auto, Air, PWLMSeat, Cruise, Tilt, Cassette

Stk. #C0044

\$13,988
^{342⁰⁰ mo.}



1999 SATURN SL1

Dark Red, 4 cyl., Auto, Air, Tilt, Cassette

Stk. #C0059

\$10,988
^{270⁰⁰ mo.}



2000 TAURUS SE

Blue, V6, Auto, Air, PWLMSeat, Cruise, Tilt, Cassette

Stk. #C0034

\$16,985
^{414⁰⁰ mo.}



1995 GRAND VOYAGER

Silver, V6, Auto, Air, Cruise, Tilt, Cassette

Stk. #T0049

\$8,988
^{225⁰⁰ mo.}



1997 E150 CARGO VAN

White, V8, Auto, PWL, Carpet & Headliner

Stk. #T0053

\$14,988
^{366⁰⁰ mo.}



1998 CHEYENNE S/C

Blue, V8, Auto, Air, Cruise, Tilt, Cassette

Stk. #T0051

\$18,988
^{462⁰⁰ mo.}

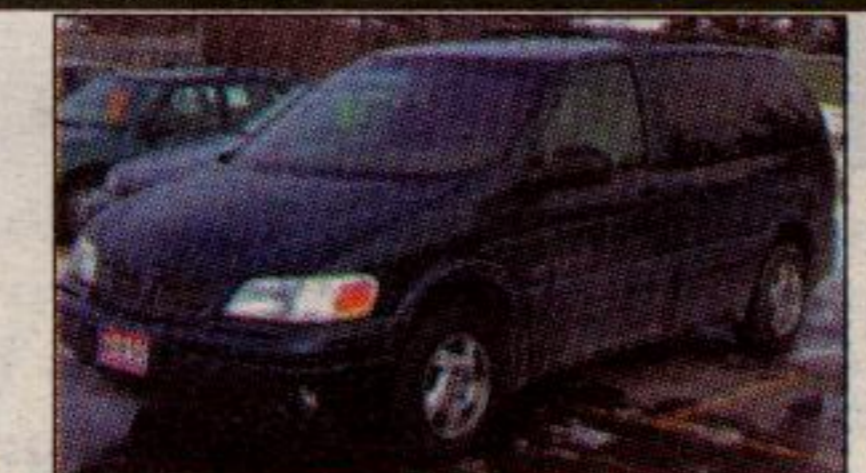


1998 SAFARI SLX

Green, V6, Auto, Air, Cassette

Stk. #T0030

\$14,988
^{366⁰⁰ mo.}



1998 TRANS SPORT

Green, V6, Auto, Air, PLM, Tilt, Cassette

Stk. #T0017

\$13,988
^{342⁰⁰ mo.}

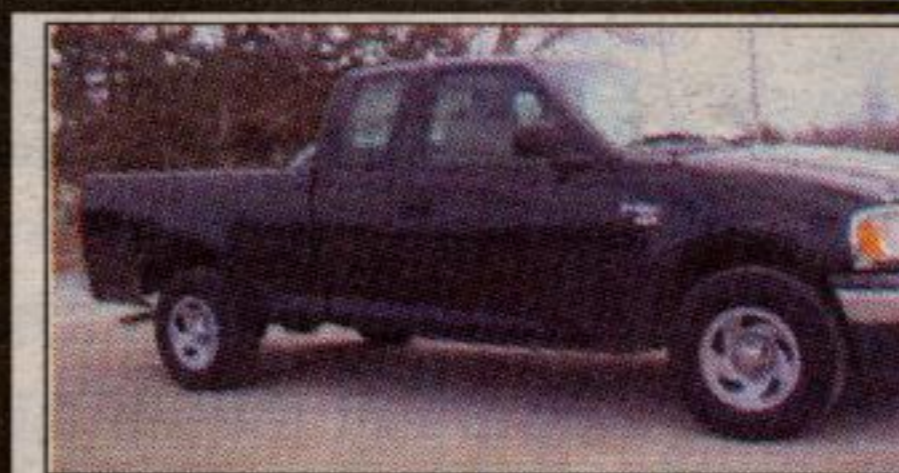


1998 VOYAGER

White, V6, Auto, Air, PLM, Cruise, Tilt, CD, 4th Door

Stk. #T0024

\$15,988
^{390⁰⁰ mo.}



1999 F150 XL S/C

Black, V8, Auto, Air, Cruise, Tilt, Cassette

Stk. #T0023

\$18,988
^{462⁰⁰ mo.}



2000 F250 SUPER DUTY XLT S/C

Red, V8, Auto, Air, PWLM, Cruise, Tilt, CD, Alloys

Stk. #T0055

\$27,988
^{674⁰⁰ mo.}



CARGO - HORSE - CAMPER & AUTO HAULER TRAILERS

PARK'S
STRESS FREE
PLAN

PARK'S "STRESS FREE" VEHICLE PURCHASE INCLUDES:

- 6 MONTH/ 10,000 KM GLOBAL POWERTRAIN WARRANTY
- 6 MONTH ROADSIDE ASSISTANCE
- 30 DAY/ 2500 KM. EXCHANGE POLICY ON YOUR PURCHASE
- ONTARIO DRIVE CLEAN CERTIFIED
- FREE 1ST LUBE, OIL & FILTER INCLUDING 10 POINT INSPECTION
- GUARANTEED NO MAJOR COLLISION DAMAGE
- BANK FINANCING & LEASING ON SITE
- EXTENDED WARRANTY AVAILABLE
- FULLY EQUIPPED SERVICE DEPARTMENT
- COMPETITIVE PRICING REVIEWED WEEKLY
- ALL PRICING INFORMATION CLEARLY SHOWN ON VEHICLES AND IN OUR ADVERTISING

Purchase financing payments DO include taxes and administration charges. Sale prices do NOT include taxes and administration charges. Payments are based on 9.25% annually for loans \$12,500 and over, 9.85% annually for loans \$10,000 to \$12,499 and 10.50% annually for loans less than \$10,000. Term is 60 months with ZERO DOWN PAYMENT. Eg. for \$12,500 @ 9.25% APR payment is \$261.00 per month for 60 months, C.O.B. is \$3,160.00 for a total of \$15,660.00. Subject to credit approval.

SALES HOURS:

Mon. - Thurs. 9 - 8 pm
Fri. - Sat. 9 - 5 pm
Any other times by
appointment

On Highway #7 between Georgetown & Acton

PARK MOTOR SALES

905-877-2261

Visit us at www.autotrader.ca/parkmotorsales

We are a
member of
UCDA
Used Car
Dealer
Association