

RE/MAX • RE/MAX • RE/MAX • RE/MAX • RE/MAX



Heather (Whiting) Scotland** R.L.I.,
Associate Broker
hscotland@yahoo.com

RE/MAX

BLUE SPRINGS REALTY (HALTON) CORP.

Residential, I.C.I. and Land Development

Acton Office

(519) 853-2086

Toll Free 1-888-833-1945



Leigh Whiting**
Associate Broker
leighwhiting@yahoo.com

NEW



CONDO APARTMENT SITE - \$269,900

Downtown .65 acre zoned R4 holding needs site plan for 42 unit bldg.

MLS#LQ4542

NEW



IN-LAWS ON 10 ACRES

Super 2 family set up each with their own living rooms and bedrooms with shared dining room and fabulous bleached oak kitchen. Five walkouts to the deck overlooking the pool Pergo flooring, Clerestory windows, Cathedral ceilings and French Doors are some just of the features.

MLS#LT6405



DESIRABLE END UNIT \$122,900

Phase III townhome on private court has 3 bedrooms, 1 1/2 baths & finished basement. Upgraded broadloom & neutral decor.

MLS#L70393



COMMERCIAL/RESIDENTIAL \$249,900

.9 Ac of C2-1 highway commercial w/workshop + 4 BR home, many uses, good location.

MLS#LT2000/AK1854



INDUSTRIAL/RESIDENTIAL \$549,900

3 acres of M1 w/5 bays & outside storage + 3 BR bungalow w/1 BR apt. Private lot w/highway access.

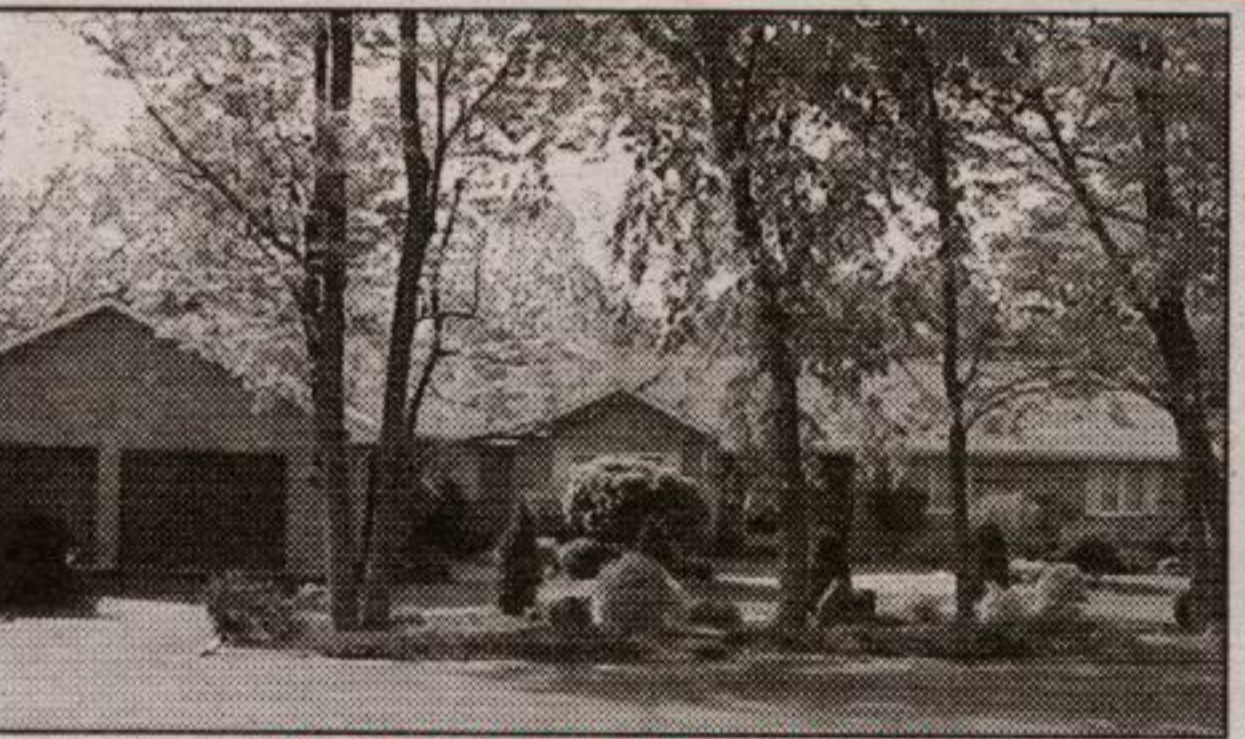
MLS#LT0880 MLS#AK1426



RED BRICK FARMHOUSE \$399,900

Ready for restoration, w/gorgeous views. 5 BRs, 2 baths, 96 acres & barn.

MLS#LQ5161



EDEN MILLS IN-LAWS \$359,900

Custom built, gorgeous Beckermann kitchen, 3+gar/shop, 3 BRs, w/o basement w/1BR & den in-law.

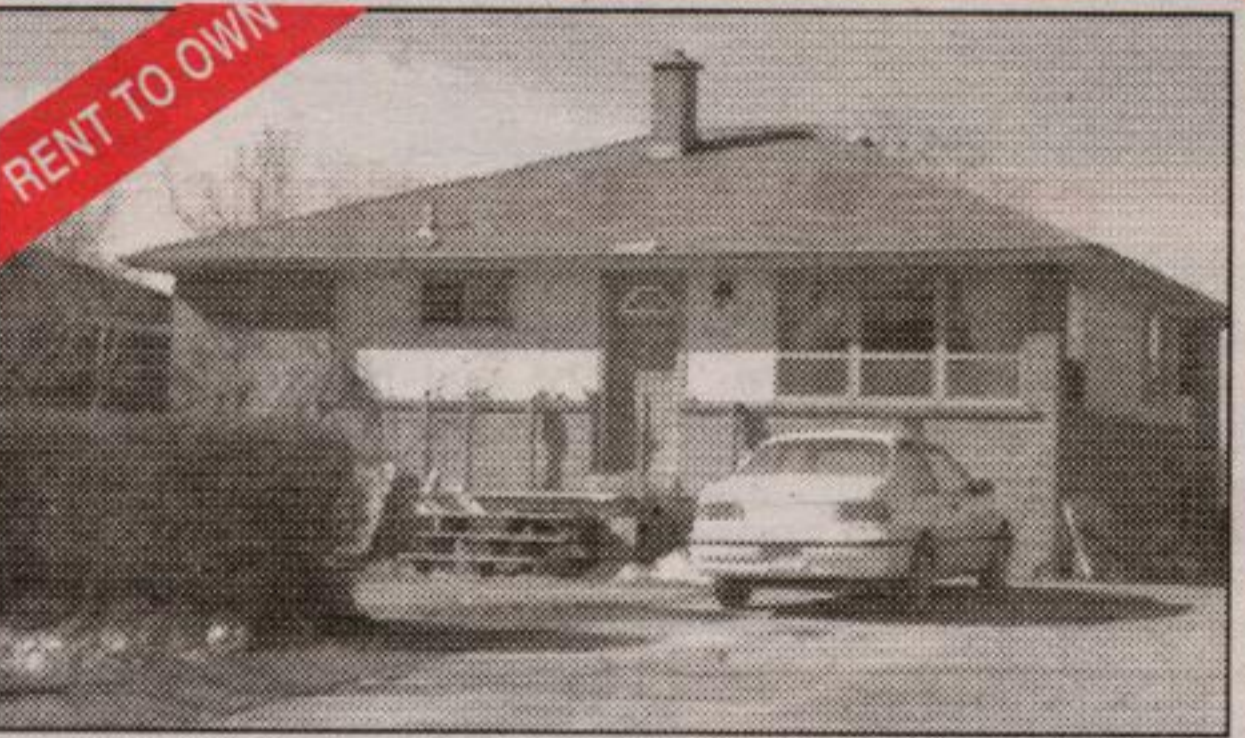
MLS#X38910



INVESTMENT TRIPLEX \$199,000

Excellent return on this updated legal triplex with 3 BRs, 2 BR & 1 BR apts.

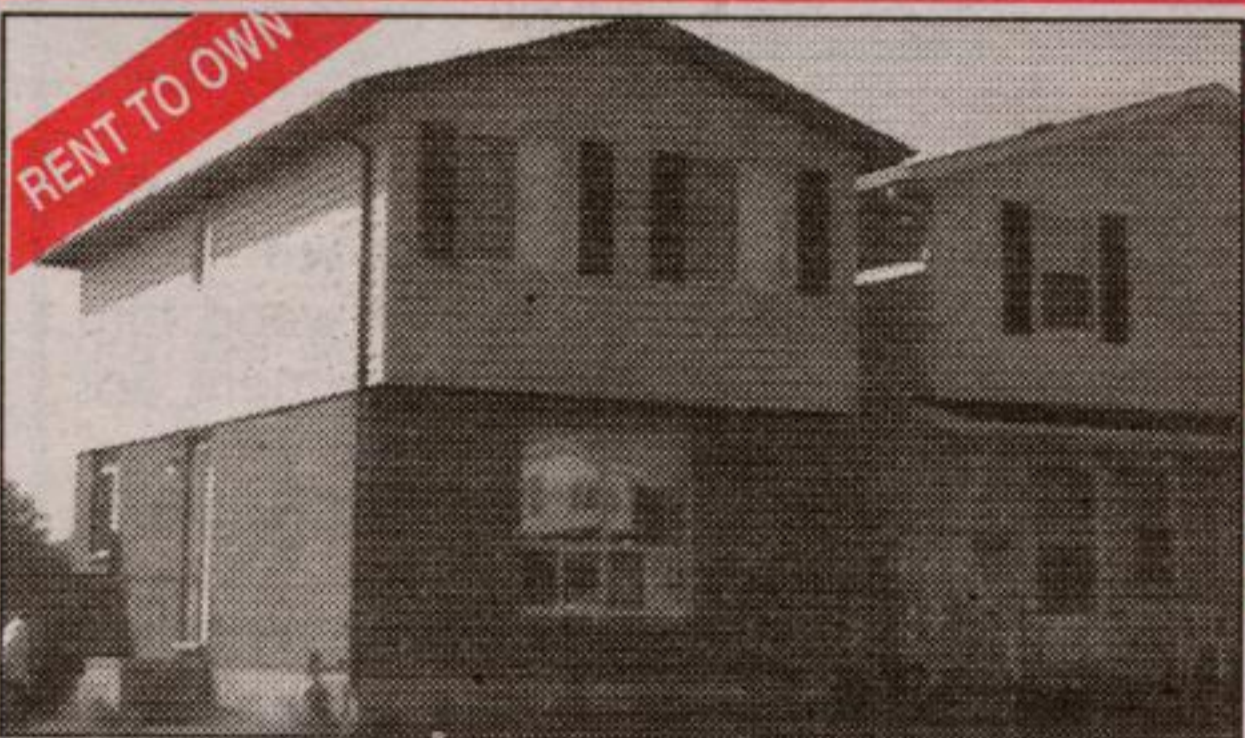
MLS#LQ5119



RAVINE ON THE PARK \$166,900

Solid brick bungalow w/hardwood floors. 3 BRs, 1.5 baths, w/o bsmt.

MLS#LS0612



OPPORTUNITY KNOCKS \$149,900

Good starter home on large treed lot. 3 bedrooms, eat-in kitchen, gas furnace.

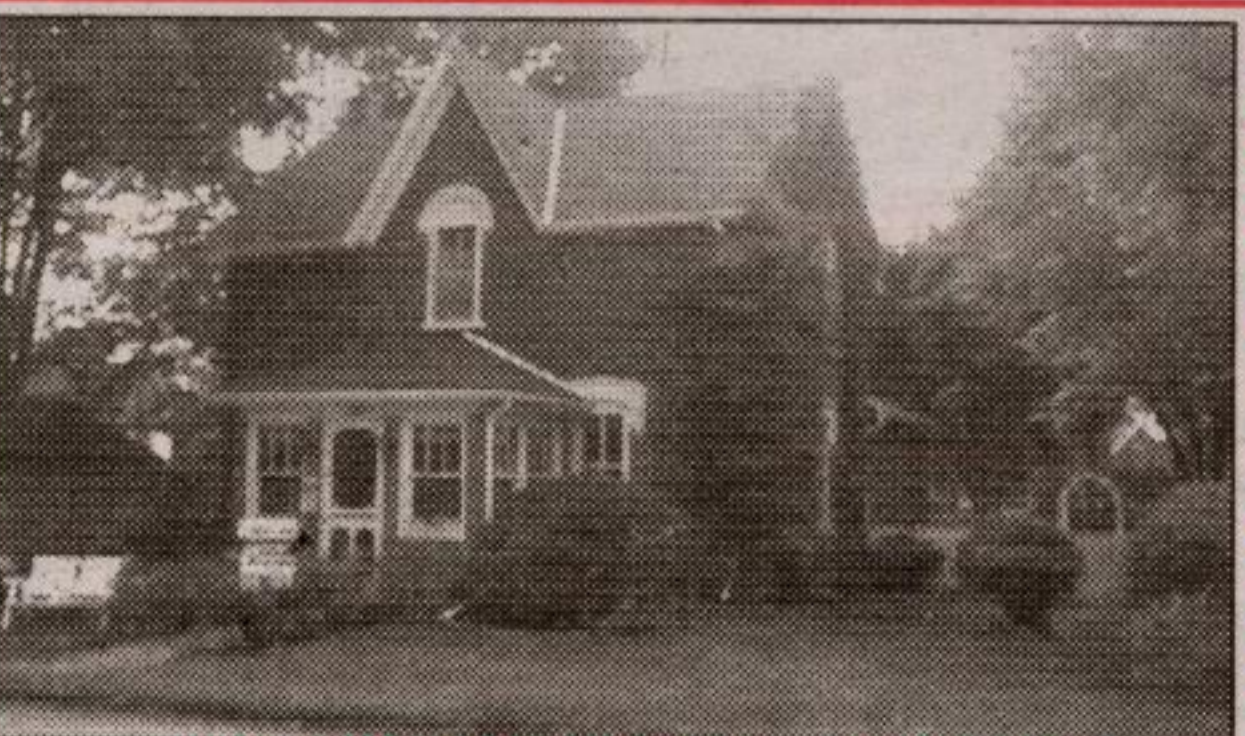
MLS#LS7444



BRIDLEWOOD ESTATES \$499,900

Custom 3000 sq. ft. 4 bedroom home on 2.59 treed acres with library plus family room with fireplace.

MLS#L70393



VICTORIAN CHARM - \$199,900

Story book setting with gorgeous gardens. 3 bedrooms, 2 baths, family room with fireplace, finished basement and detached garage.

MLS#L70393

RE/MAX • RE/MAX • RE/MAX • RE/MAX • RE/MAX



Janis Garel**

Winning Team

(519) 853-2086

Toll Free 1-888-833-1945 E-mail: jgarel@trebnet.com
RE/MAX BLUE SPRINGS REALTY (Halton) CORP.

**Associate Broker *Sales Representative



Dave Braida*



HOME SWEET HOME...

Says it all, 3 spacious bedrooms, plus 4th in the bright basement with above grade windows. Eat-in kitchen plus combo living/dining room with walkout to deck overlooking treed backyard. 3 washrooms and main floor laundry. Look no further at \$179,900.00 it's a steal. Call Janis** or Dave* 853-2086.



STUNNING FAMILY HOME

Lovingly maintained by original owners. Thousands spent in upgrades. Hardwood floors, luxury spa like bathroom. Kitchen fit for a chef. Inground pool and more. Asking only \$229,900. Call Janis** or Dave* 853-2086.



LOW CONDO FEES

Spacious 3 bedroom townhouse, 3 bathrooms. Includes 4 appliances. Walkout basement, backing onto wooded ravine. Main bathroom updated. Asking only \$117,900.



LARGEST MODEL

This home is great for your growing family. 4 large bedrooms, huge eat-in kitchen, rec room with wet bar, plus 5th bedroom in basement. Asking only \$194,900. Call Dave* or Janis** for a personal tour.



JUST STARTING OUT?

or perhaps just retiring? either way this cozy home is perfect. No work to do, kitchen, bath, furnace, electrical, roof, have all been redone. Separate detached garage. Cute as a button! Asking only \$134,900. Call Janis** or Dave*. 853-2086.



TO BE BUILT

Two semi-detached homes in downtown Acton by Quality Custom Builder. Walk to shopping and church. Pick your own options & colours. \$179,900. Call Dave* or Janis**.



QUAINT IN THE GLEN

Charming Century home in the heart of Glen Williams. Stunning professionally landscaped gardens, country kitchen, renovated bathroom, spacious bedrooms, many upgrades. Call Janis** 853-2086.



HIGH & DRY

Build your dream home here. 9.82 acre parcel south of Hwy 24 on Hwy 25. Mixed bush at rear.



10 ACRES

Erin Township residential building parcel. Road in, partially fenced & small shed on property.

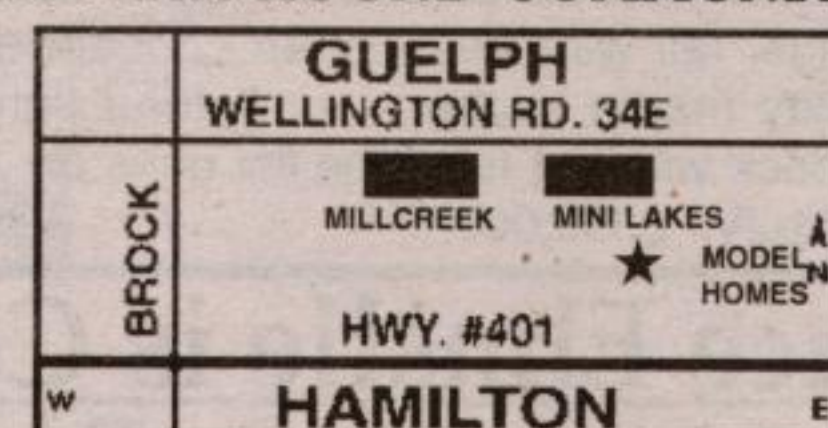
ABERFOYLE



MODEL HOMES **SUMMER HOURS**
OPEN Fri., Sat., Sun., Mon. 11 AM-4 PM

TURNKEY PACKAGES **\$99,900**
FROM

AFFORDABLE LEISURE LIVING IN A YEAR ROUND COMMUNITY



Brought to you by: **House Smart** (A Division of Mobilife Inc.)
1-888-560-2345/519-653-1345

MILLCREEK COUNTRY CLUB MINILAKES COUNTRY CLUB
(519) 763-1048

Got A New Listing?



Get it SOLD!

Call Sue Spizziri to book your ad now!

905-873-0301 Fax: 905-873-0398

E-mail: independent.freepress@aztec-net.com

The Independent & Free Press
A Metroland Community Newspaper

SERVING GEORGETOWN, ACTON AND SURROUNDING AREA