

## COMMUNITY CALENDAR

**Leathertown Festival:** Acton's 10th annual Leathertown Festival is looking for crafters, vendors and artisans to participate in this huge one-day event. Info: Pat, 905-877-0258 or Josey, 519-853-1031, ext. 274.

**Car rally:** SALT— a north Halton Christian singles group is hosting a community singles car rally and barbecue on August 11 at 3 p.m. at the Georgetown Alliance Church, 290 Main St. S. Preregistration is required by August 7. The entry fee is \$7 per person. Call 905-877-4589.

### Friday, July 27

**Foot care clinic:** VON hosts a foot care clinic at the Georgetown Seniors Centre, 9-11:20 a.m. By appointment only. Call 1-800-387-7127, ext. 2210.

### Saturday, July 28

**Show 'N Shine:** The third annual show, Show 'N Shine will be held at Prospect Park in Acton. Admission and parking are free. The show, which runs from 9 a.m. to 6 p.m., will feature cars, trucks,

motorcycles as well as an open division for highway trucks (no trailers), snowmobiles, farm tractors and boats. Proceeds to the Acton Agricultural Society's building fund. For more information about the show, check out: [www.aztec-net.com/~acton](http://www.aztec-net.com/~acton) cruise.

**Blood donor clinic:** Canadian Blood Services holds a blood donor clinic at the Nirankari Mission, 2774 Hwy. 7 in Norval, 11 a.m. to 4 p.m. Special need for type O.

**Charity car wash:** Five exchange students, along with the Rotary Club of Georgetown will hold a car wash in the Zellers parking lot, 10 a.m. to 4 p.m. Proceeds to charity.

### Sunday, July 29

**Bruce Trail hike:** Go for a 5-6

km afternoon hike on the Bruce Trail. Meet at 1 p.m. outside Zellers, near the bike rack at the Georgetown Marketplace. Info: Maureen Smith, 905-873-9757.

### Thursday, Aug. 2

**Limehouse euchre:** Limehouse Memorial Hall hosts an euchre night at the hall, 7:30 p.m. All welcome.

### Tuesday, August 7

**Seniors euchre:** All are welcome to come to the Georgetown Seniors Centre for its Tuesday evening euchre at 7 p.m.

**Portrait/still life:** Palette and Pencil Guild of the Credit Valley Artisans hosts Portrait and Still Life Drawing every Tuesday, 7:30-9 p.m. in the Cedarvale Lodge in Cedarvale Park. New members welcome. Info: Rita, 873-2290.

**Foot care clinic:** VON foot care clinic at St. John's United Church on Guelph St., every Tuesday, 1-4 p.m. Cost, \$20. Space is limited—by appointment only. Call 1-800-387-7127, ext. 2210.

## ANNOUNCEMENT



**Fatima Furtado**

Roos Vision Travel would like to welcome Fatima as the newest member of our staff. Fatima has been serving customers in the Brampton and Halton Hills area for 8 years. As an expert in leisure travel Fatima enjoys planning European Holidays and Winter Sun Getaways.

For private consultations call or visit:

**Roos Vision Travel**  
328 Guelph St.,  
Georgetown  
905-873-2000

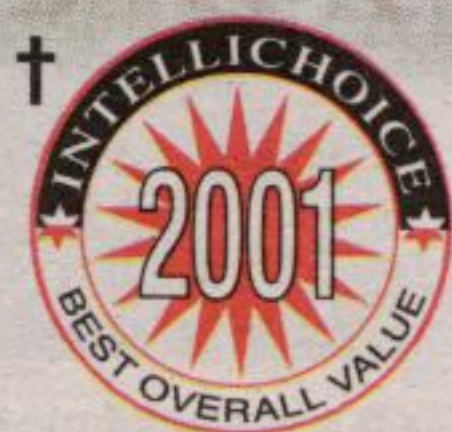


# Honda: Getting there is half the fun

**Value Price Advantage**  
**\$1,485 Included**

**2001 CR-V LX GT Edition Features:**  
Roof Rack • Side Bars  
• Hood Deflector • Front Mud Guards • Hard/Soft Tire Cover (LX/EX only)  
• Thule Bike Carrier  
• & More...

(Also available on CR-V EX and LE models)



## CR-V GT EDITION EXCITEMENT INCLUDED

Hurry In!  
Limited Quantity\*\*



# **5.8%** Lease Rate and Purchase Financing on all new 2001 CR-Vs

**CR-V LX GT Edition \$26,900 MSRP\*** (Includes voucher for GT bike)

OR LEASE IT FOR **\$338** per month for 48 months, WITH ONLY \$3,416 DOWN FREIGHT & P.D.E. INCLUDED

**PERFORMANCE:** Real Time™ 4-Wheel Drive • 4-Wheel Double-Wishbone Suspension • Fuel Injection • 2.0 Litre, 146-hp, DOHC Engine • Power-Assisted Rack-and-Pinion Steering • 15" Wheels • 5-Speed Manual Transmission • All Season Radial Tires • & More...

**SAFETY:** Dual Front Air Bags • Anti-Lock Braking System (ABS) • Child-Proof Rear Door Locks • Child Safety Seat Tether Anchors • 3-Point Seat Belts • & More...

**COMFORT:** CFC-Free Air Conditioning • Micron Air Filtration • AM/FM Stereo Cassette with 4 Speakers • Dual Manual Driver's Seat Height Adjustments • Cruise Control • Adjustable Steering Column • Front Stabilizer Bar • Front & Rear 12 Volt Accessory Sockets • & More...

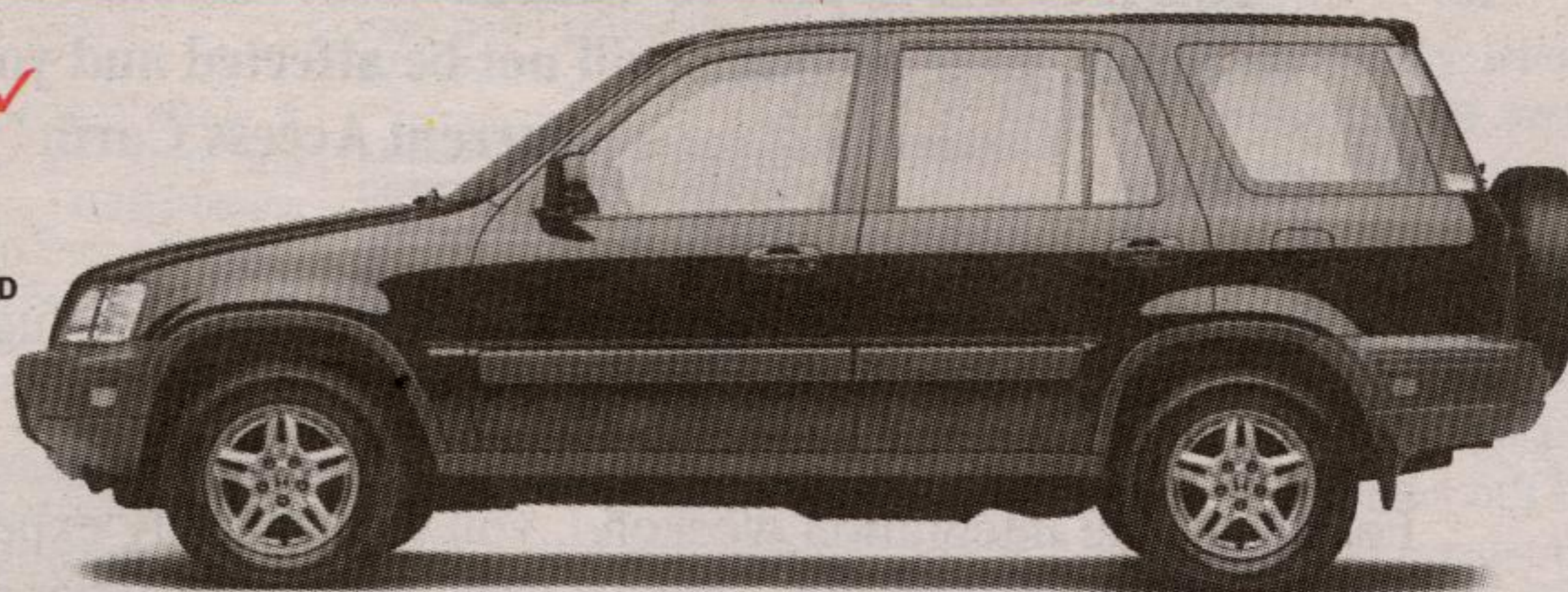
**CONVENIENCE:** Power Windows, Door Locks & Mirrors • 50/50 Split Rear Seat • Removable Folding Picnic Table • Rear Washer/Wiper • Remote Rear Hatch Release • Body Side Mouldings • Vanity Mirrors • Adjustable Rear Seat Headrests • & More...

"All in all, the CR-V is a winner, no wonder it's the best-selling small sport-ute in Canada." — Jeremy Cato, Southam Newspapers

**CR-V EX \$28,300 MSRP\***

WITH ALL THE FEATURES OF THE CR-V LX PLUS: 4-Speed Automatic Transmission • AM/FM Stereo CD Player with Anti-Theft (no cassette) • Keyless Remote Entry with Hatch Release • Body-Coloured Door Handles & Power Door Mirrors • Alloy Wheels • Rear Seat Tilt-Up Feature • Floor Mats • & More...

OR LEASE IT FOR **\$348** per month for 48 months, WITH ONLY \$3,652 DOWN FREIGHT & P.D.E. INCLUDED



**CR-V LE \$29,800 MSRP\***

WITH ALL THE FEATURES OF THE CR-V EX PLUS: Leather Seats • Leather Wrapped Steering Wheel • Addition of a Cassette Player • Body-Coloured Bumpers, Side Mouldings & Hard Spare Tire Cover • Chrome Front Grille • Side Privacy Glass

OR LEASE IT FOR **\$368** per month for 48 months, WITH ONLY \$3,734 DOWN FREIGHT & P.D.E. INCLUDED



TAKE A TEST DRIVE AT YOUR NEIGHBOURHOOD HONDA DEALER... YOU COULD WIN A TRIP FOR 4 TO ORLANDO!  
OR VISIT [www.hondatestdrive.com](http://www.hondatestdrive.com) OR CALL 1-866-89-HONDA



HONDA

Your Neighbourhood  
ONTARIO  
Honda  
DEALERS

Lease and finance offers are available, on approved credit, only through Honda Canada Finance Inc., until July 31, 2001. Lease payments shown are for 48 months and include \$850 for freight and P.D.E. with 96,000 km allowance (10¢/km exceeding 96,000 km applies). \*Based on a new 2001 CR-V LX-GT, 5-Speed/CR-V EX, Automatic/CR-V LE, Automatic (model RD1741E/RD1851E/RD1871E) \$338/\$348/\$368 per month for 48 months. A.L.R. 5.8% (total lease obligation of \$16,224/\$16,704/\$17,664). Down payment or equivalent trade of \$3,416/\$3,652/\$3,734 required, (zero down payment plans available), plus first monthly payment and security deposit (\$400/\$425/\$425). Option to purchase at lease end for \$12,374/\$13,301/\$14,006 plus taxes. \*M.S.R.P. does not include freight and P.D.E. (\$850). #5.8% conventional financing is available on all new 2001 CR-Vs for 24, 36, 48 or 60 month terms. Financing example: \$20,000 at 5.8% per annum equals \$384.80 per month for 60 months. C.O.B. is \$3,088.00 for a total obligation of \$23,088.00. Down payment may be required. \*\*Taxes, licence, insurance, administration and maintenance fees are additional. Dealer may lease/sell for less. †CR-V LX/EX have been named Best Overall Value in the compact sport utility class. For details visit [www.intellichoice.com](http://www.intellichoice.com). ††CR-V GT Editions may not be available for the duration of the Summer Values event. See your neighbourhood Ontario Honda Dealer for details.