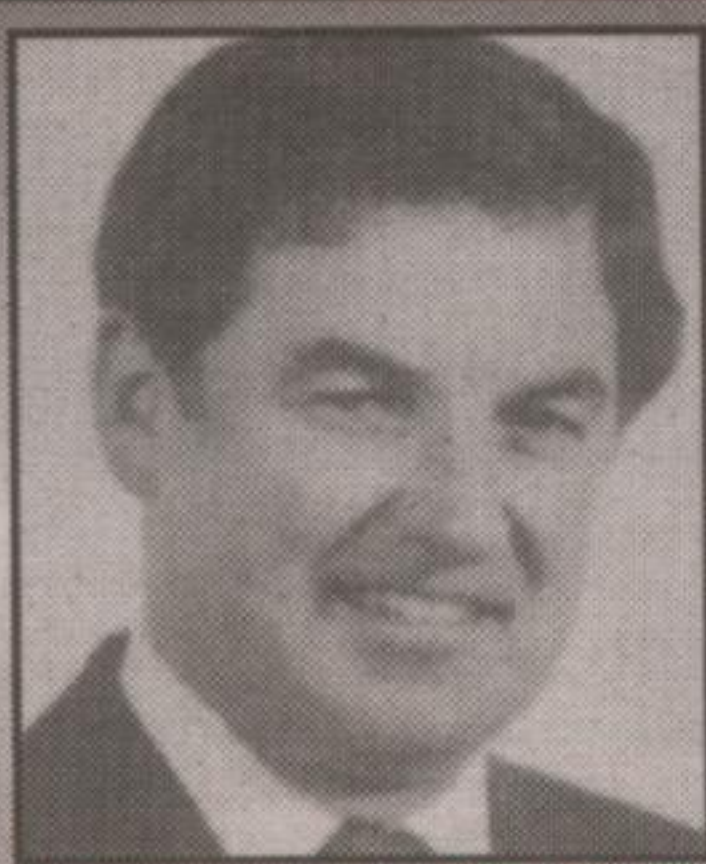


WEB SITE: www.barnstaplehomes.com WEB SITE: www.barnstaplehomes.com



LARRY BARNSTAPLE
*SALES REPRESENTATIVE

PROVIDING
REAL ESTATE
SERVICES FOR
CALEDON, ERAMOSA,
GUELPH & HALTON

PROMOTING YOUR
PROPERTY IN
TORONTO &
LOCAL ADS.

RE/MAX BLUE SPRINGS

REALTY (HALTON) CORP.

877-5211

(519) **833-7117** Tor. (905) **877-1237**

Res. **833-9578**

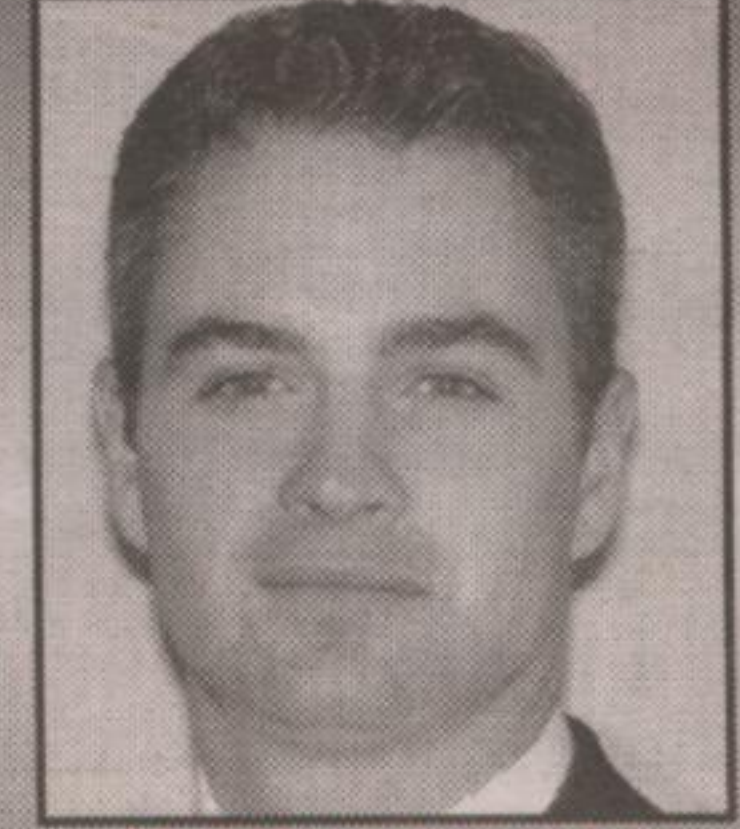


Office

(519) **856-4348**

Res.

(519) **821-9560**



RICHARD WARD*
SALES REPRESENTATIVE

e-mail: barnstaple@aztec-net.com

NEW PRICE



EXCEPTIONAL COUNTRY ESTATE

A long winding driveway through the forest opens up into the beautifully landscaped twenty-two acres. Two crystal clear ponds are stocked with fish and the grounds are meticulously cared for. This newer home has two separate living areas, Geo-thermal heating, family size kitchen with cathedral ceiling, walkout to solarium with deck, terrific workshop and a picture-perfect setting. A tremendous opportunity! Call **Larry Barnstaple*** at 905-877-5211 or 519-833-9578. **BAB-00**



UPSCALE HORSE FARM

48 acres of rolling countryside, long views, exceptional horse barn with attached runin barn and carriage shed, modern drive shed, beautiful 3 car insulated garage with guest suite loft, fenced paddocks. Immaculate 4 bedroom home with 3 baths, 2 fireplaces, walkout basement. This one! Don't snooze - call **Larry Barnstaple*** 905-874-3051 or 905-877-1237.



**EXCEPTIONAL LOT!
EXCEPTIONAL LOCATION!**

Glen Williams area. This quality bungalow sits privately at the end of a long treed drive. Spectacular view over expansive forested gorge with tributaries to the Credit River flowing through the valley below. Home features 2 fireplaces, 3 baths, 2 car garage, shop, large garden shed, exceptional landscaping, only once in a lifetime! Call **Larry Barnstaple*** 905-877-5211 or 905-877-1237.



NEW PRICE \$699,000

VICTORIAN ON 173 ACRES

Great property for landing strip or race track. 173 scenic acres, tributary to Eramosa River, exceptional pond, original bank barn plus several modern barns - some insulated, workshop, home features fireplace, charming original trim, pine and maple floors. Call **Larry Barnstaple*** 905-874-3051 or 519-833-9578. **MAR-00**

NEW PRICE



CALEDON COUNTRY

\$319,000. Beautiful country setting on treed acre lot, great setback, long views, main fl fam rm with log burning frpl, lrg fam kit, separate din rm, entertainer's liv rm with raised hearth frpl, 3 spacious bedrms, 3 baths, main fl laundry, lrg 2 car gar with walkup from basement. Call **Larry Barnstaple*** 905-877-5211 or 905-877-1237. **TRI-00**



MINEOLA WEST

Enjoy your own park setting. 1/2 acre of trees and hills, three road frontages, walking trail along quiet stream. Minutes to "GO" train and lake. Walk the Banks of the Credit River. Charm and character of a near century home. Screened verandah, hardwood floors, original woodwork, walkout basement. Call **Larry Barnstaple*** 905-874-3051 or 905-877-1237.



CHARMER IN GREAT LOCATION!

\$289,000 4 bedroom, 2 storey on paved road, huge family kit., entertainers living and dining room, floor to ceiling Br. fireplace, 2 bathrooms, very private treed lot with pond, oversized two car garage, main fl. laundry. Call **Larry Barnstaple*** 905-877-5211 or 905-877-1237. **DHA-01**



OLD FASHION CHARM!

with all the upgrades and technologies of a custom home, 89 scenic acres with trails, bush and long views, totally upgraded bank barn & steel drive shed with hydro, water & remote operated roll up doors, home features open concept floor plan with exceptional decor. Great access to 'GO transit' & 401. This one is "A Must See!" Call **Larry Barnstaple*** 905-874-3051 or 905-877-5211. **SIL-01**



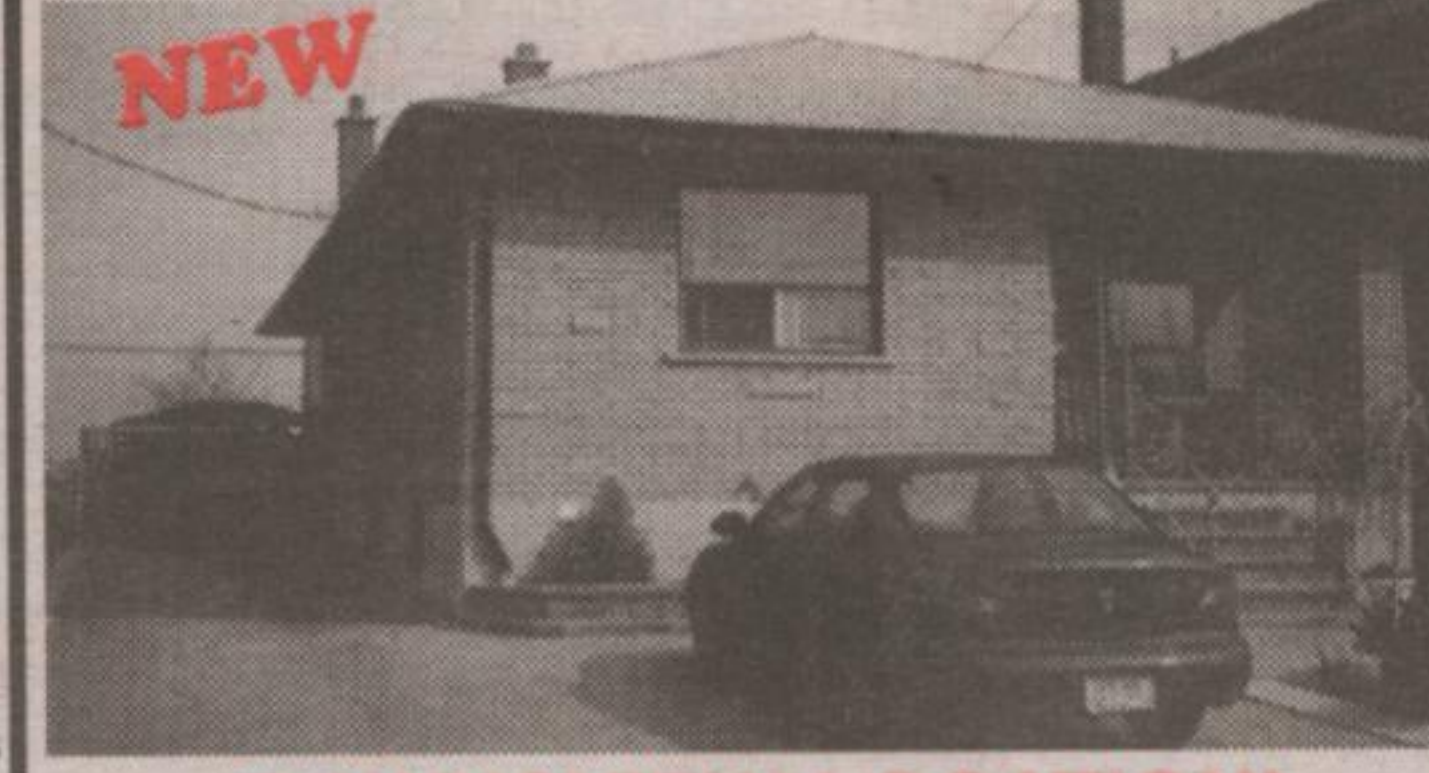
COUNTRY ROAD

Immaculate 3 bedroom, on 43 acres of Erin countryside. Bush, pond site, workable farmland, small barn. Brick home features ceramic & wide plank hardwood floors. Woodstove, fam. rm, summer kit., finished rec rm., walkout to wrap around deck, oversized double car garage, close to "GO" and Hwy. #7. Don't wait call **Larry Barnstaple*** 905-877-5211 or 519-833-9578. **NOS-01**



JUST ABOUT PERFECT

A gracious bungalow of approx. 2000 sq. ft. is set amidst 18.57 acres of paradise. Paths lead into the mature reforested bush, a natural pond and stream have fish, and two hundred acres of designated conservation land, adjacent to this property, offer and naturalist a chance to view different types of wildlife in their natural habitat. Set well back from the quiet country road, the immaculate home features a log burning fireplace, three-season sun room, an entertainer's living room, dining room, a beautiful family kitchen with walkout, double car garage and separated heated shop. Call **Larry Barnstaple*** 905-877-5211 or 519-833-9578.



DOWNSVIEW LOCATION!

\$319,000 renovated 3 bedroom on landscaped lot with fenced backyard, gleaming hardwood plus ceramic flrs., exceptional fam. kit., 2 full baths with patio door to expansive covered terrace with wrought iron railings & staircase to private yard, glassed in sunroom entrance, finished basement with rec. rm., fireplace, kit & bedrm. Huge parking area done with pavers plus lots more. Call **Larry Barnstaple*** 905-874-3051 or 905-877-1237. **DOWNSVIEW LOCATION!**



ONCE IN A LIFETIME, ONE OF A KIND

Picturesque countryside surrounds this beautiful New England saltbox-style home. 75 acres of property with three ponds, hardwood bush, limestone outcroppings, trails, large oak fenced paddocks, rolling open fields, sod dressage and jumping school set the stage for this exceptional equestrian estate. Superb barn features five box stalls, huge run-in shed, wash rack, heated tack room, feed room, large mow and carriage house. Custom crafted home features stunning great room and luxurious master suite. Magnificent landscaping is highlighted by an enormous inground pool and private spa house. A very private setting, just minutes from "GO". Call **Larry Barnstaple*** at 905-874-3051 or 905-877-1237. **WIN-01**



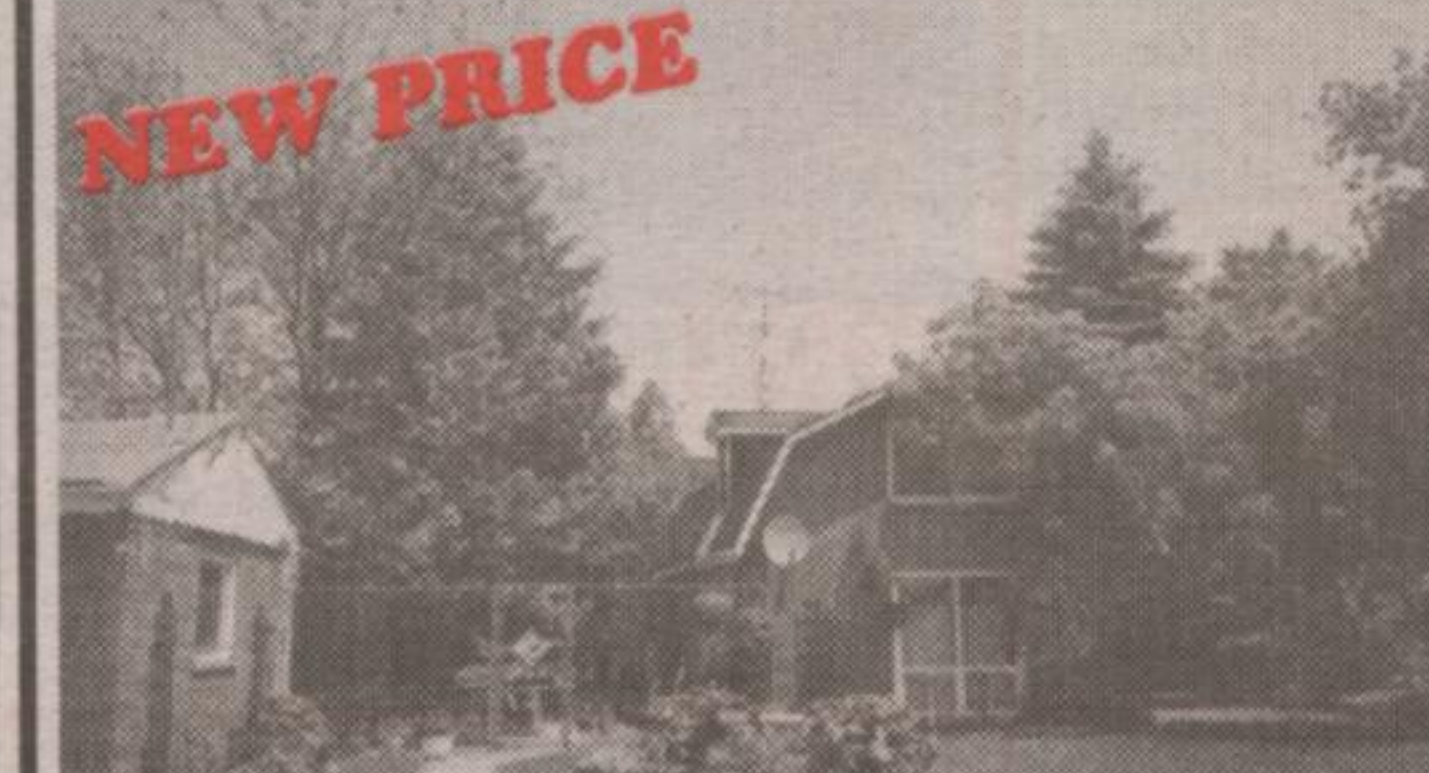
FAMILY HOME, FAMILY NEIGHBOURHOOD

This well decorated five bedroom home sits on a quiet crescent in South Georgetown. A cathedral ceiling accents the open concept great room which features gleaming hardwood floors and a gas fireplace. The beautiful kitchen has plenty of wood cabinets and a sunlit breakfast room. A deluxe master ensuite, library and private fenced yard are just some of the features. A first quality guest suite has been recently done in the lower level. An exceptional home for a large or combined family! Call **Larry Barnstaple*** 905-877-5211 or 519-877-1237. **WOR-01**



**FUN FILLED FAMILY LIFE
IN HALTON HILLS!**

\$204,900 three bedroom sidesplit in great area, 1 1/2 baths, Lrg. main flr. fam. rm. with log burning fireplace, mature treed lot with skating rink, gas heat plus air, 27 ft. long garage, close to lake & parkland, walk to downtown, great access to Hwy. #401 & "GO" transit. Call **Larry Barnstaple*** 905-874-3051 or 905-877-1237. **TOM-01**



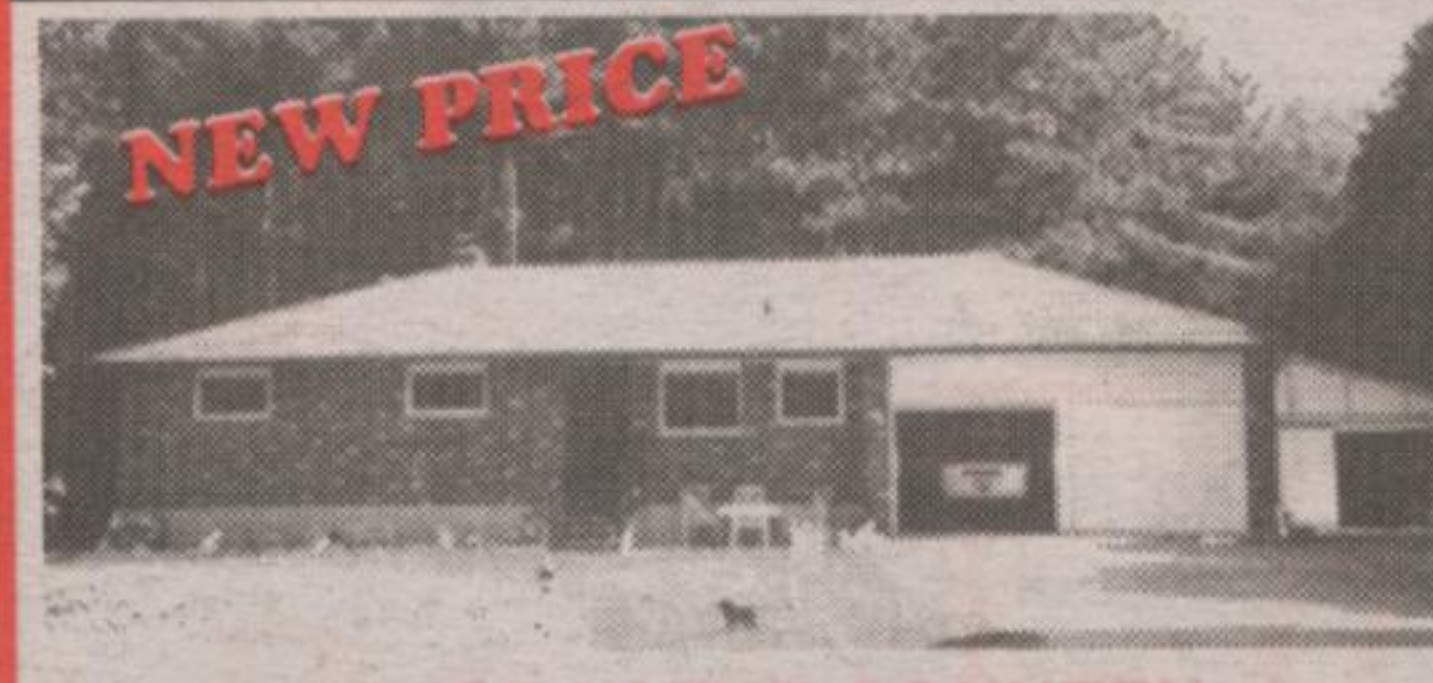
ERIN HORSE FARM

\$339,000 ~ 16.5 acres, rolling land, great views. 3 bedroom Dutch Colonial brick home. Upgraded bank barn with 6 exceptional stalls. Call **Larry Barnstaple*** 905-874-3051 or 905-877-1237. **UMP-00**



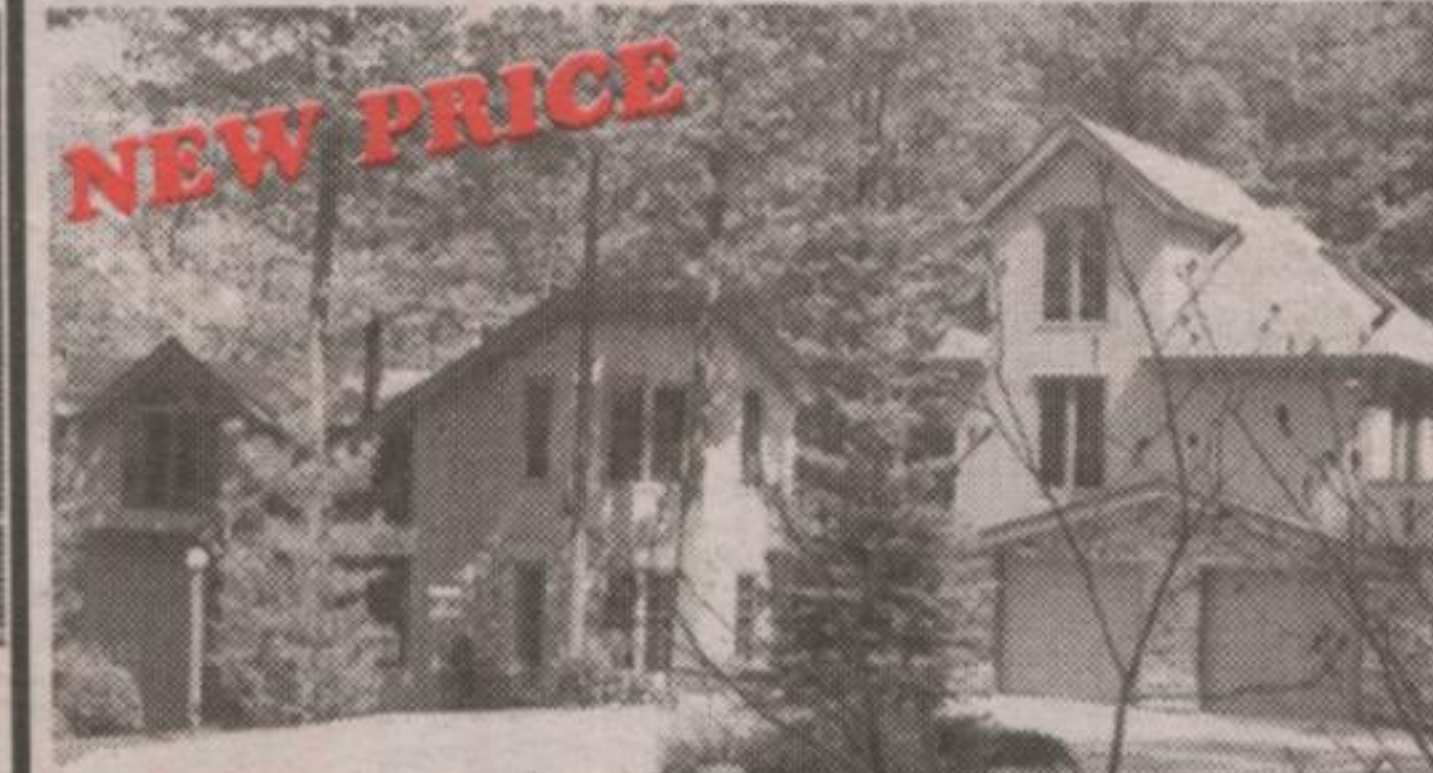
PRESTIGIOUS LOTS IN HALTON!

They don't come any better than this, a 1.4 acre lot and a 4.6 acre lot on the Ballinad Road in Halton Hills, area of upscale homes, beautifully treed lots, paved road close to GO train and Caledon Ski Club. Four area golf courses, great access to 401 & 407. Don't miss your opportunity! Call **Larry Barnstaple*** 905-874-3051 or 905-877-1237. **PIK-01**



SHOP IN THE COUNTRY

\$264,000 Value Plus, immaculate 3 bedroom brick, on beautifully treed one acre lot, home and shop nestled in tall pines set well back from road. Two bedroom log burning fireplaces, country kitchen with great views, separate dining room with walkout to sun porch, 2 car garage, basement shop plus 1600 sq. ft. shop beside home half insulated & heated, fantastic location! Call **Larry Barnstaple*** 905-874-3051 or 905-877-1237.



AMAZING CONTEMPORARY!

\$489,000. 5 acre forest treasure secluded in mature hardwood forest, entertainers living & dining with log burning fireplace & panoramic views of forested valley, solarium room, separate guest suite, majestic master bedroom with spectacular ensuite featuring tub side gas fireplace. Walkout lower level. Call **Larry Barnstaple*** 905-877-5211 or 905-877-1237.

BUILDERS DELIGHT

"ONLY ONE LEFT"

\$99,900 Buy an above average lot in Caledon. Mature maples along the frontage, beautiful views, good access to Hwy. #10 or Heart Lake Road. Call **Larry Barnstaple*** at 905-874-3051 or 519-833-9578. **RICH-99**

THINKING OF BUILDING?

Think about building your new home on this 1.27 acre lot in Caledon. Rolling land, some trees and a great building site with long views. Only 20 minutes from "GO", close to the Villages of Caledon and Erin. Golf, skiing and hiking nearby. Please call **Larry Barnstaple*** at 905-874-3051 or 905-877-1237. **SZO-00**

GREAT BUILDING LOT, GREAT LOCATION!

Build your dream home on this 1.22 acre lot in Caledon. An ideal rural setting with easy access to Hwys. 10 & 24 and close to the Villages of Caledon, Erin and Alton and 20 minutes to "GO". Hiking, skiing and golf nearby. Don't wait, call **Larry Barnstaple*** at 905-874-3051 or 905-877-1237. **ARN-00**

98 ACRES OF TREES! IN ERIN - \$249,000



IF YOU ARE LUCKY IN LIFE

This storybook Muskoka-style cottage is nestled on an incredible lot of approximately two acres of manicured lawns and magnificent old growth forest laced with well worn trails. Waterfront access with magical seclusion just minutes from major centres! A long, winding lane leads through a naturalist's paradise to the lovely 1400 square foot cabin. A lakeside boathouse, detached garage and workshop are just some of the bonuses of this property in this great house community. Don't hesitate call **Larry Barnstaple*** 905-877-1237 or 519-833-9578.

WEB SITE: www.barnstaplehomes.com

WEB SITE: www.barnstaplehomes.com

WEB SITE: www.barnstaplehomes.com WEB SITE: www.barnstaplehomes.com