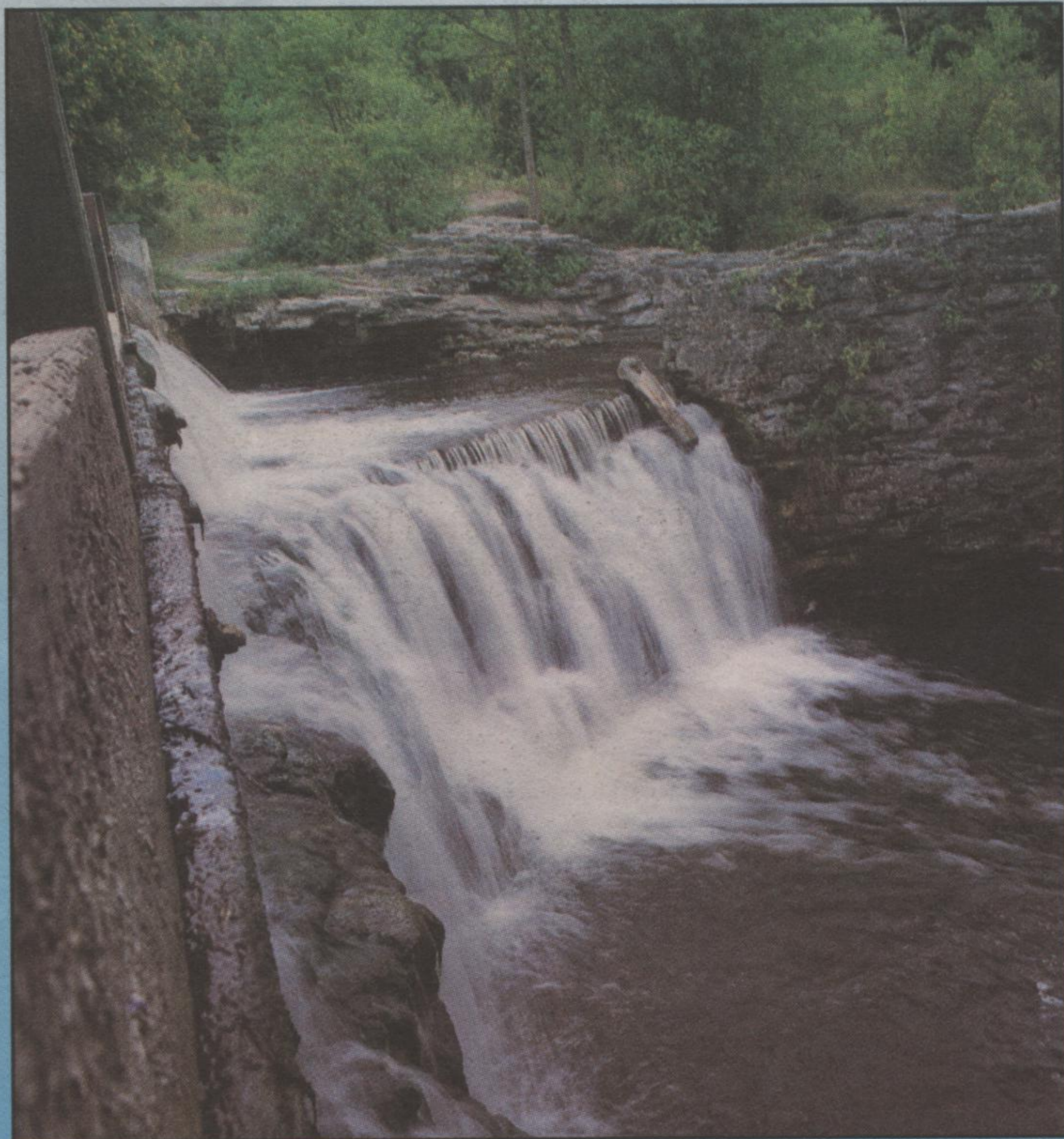


Charleston's River Walk

# Promotes upcountry living in Rockwood



For those who want more in a home, more in a location and more from their builder, Charleston Homes satisfies all of these needs with River Walk, an exquisite community of country manor-styled lofted bungalow townhomes on the banks of the Eramosa River in Rockwood.

With its soft rollings, quarries, woodlands and meandering river, Rockwood is the attractive setting for River Walk. It is a scenic village of board and batten homes with a main street of boutiques, shops and local services set in the midst of conservation areas. Their trails wind along the Eramosa River bordering this intimate enclave. It is here the Charleston Homes has thoughtfully-planned this community of lofted bungalows

with many featuring riverside lots and lots with walkout basements. Picture perfect surroundings and a treed border enclose these homes that are ideal for those seeking relaxed lifestyle. A homeowners' association will provide lawn care and snow removal to ensure a maintenance-free lifestyle.

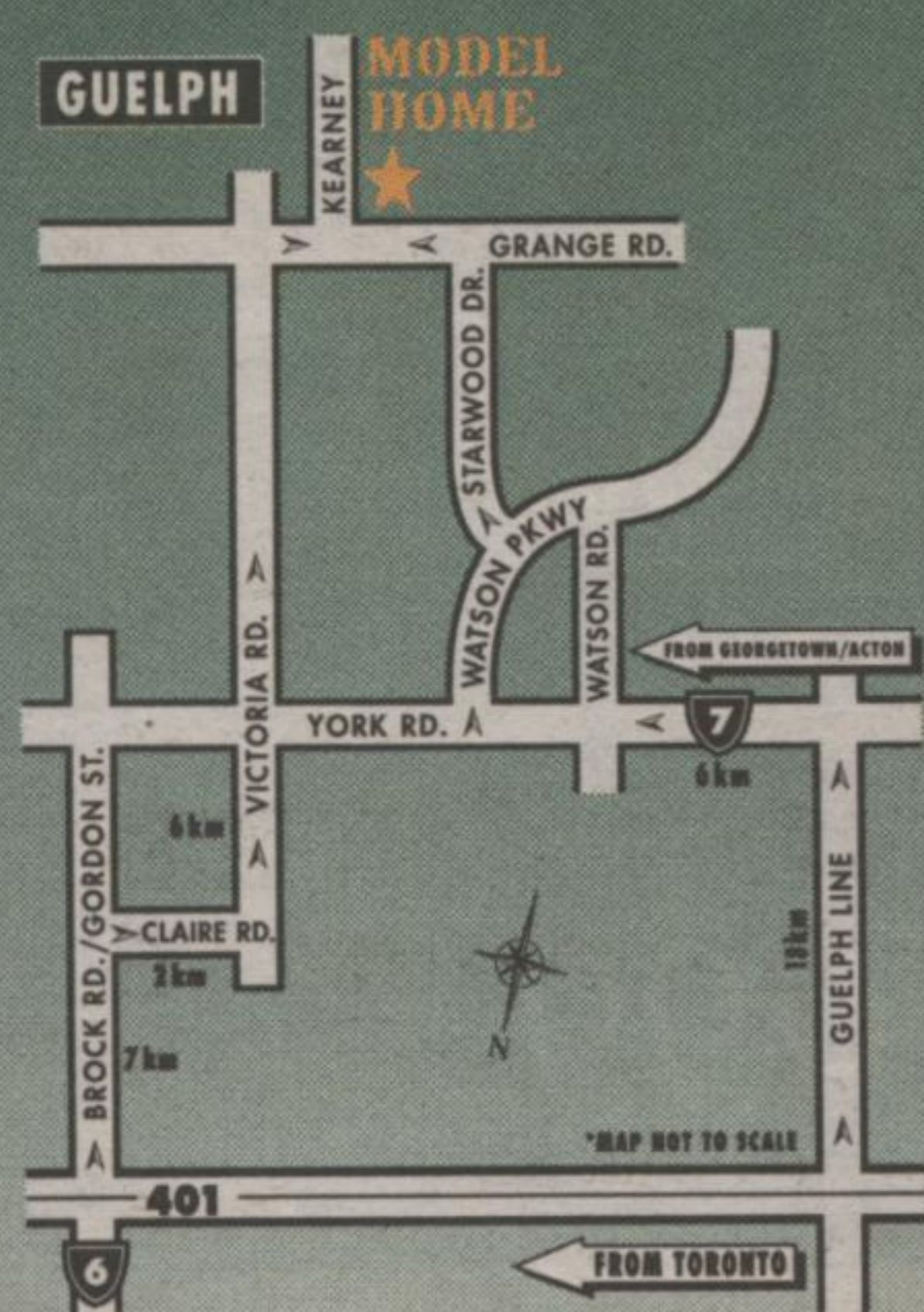
A handsome limestone house built by the town's founder now houses the information centre for Charleston Homes, reminding all who visit of this picturesque community's proud past. Charleston's Charlie Kuiken, a custom builder, selected Rockwood for its tranquil setting to build distinguished homes of classic comfort, contemporary style and gracious appointments. Kuiken grew up in the area and knows firsthand of the benefits of country living. His years of exacting craftsmanship are evident in the home designs and quality appointments, and he is always pleased to customize a home to its owner's discriminating tastes and needs. Kuiken has also gained a wealth of experience from clients who demand innovative design combined with custom-crafted details that exhibit classic style and character. Evidence of his high standards is found at his other sites which include

continued on page 5



Now featuring a limited collection of semi-detached homes.

Model Home Hours  
Mon. - Wed. 2-7 pm  
Sat. & Sun. 12-5 pm or by appt.



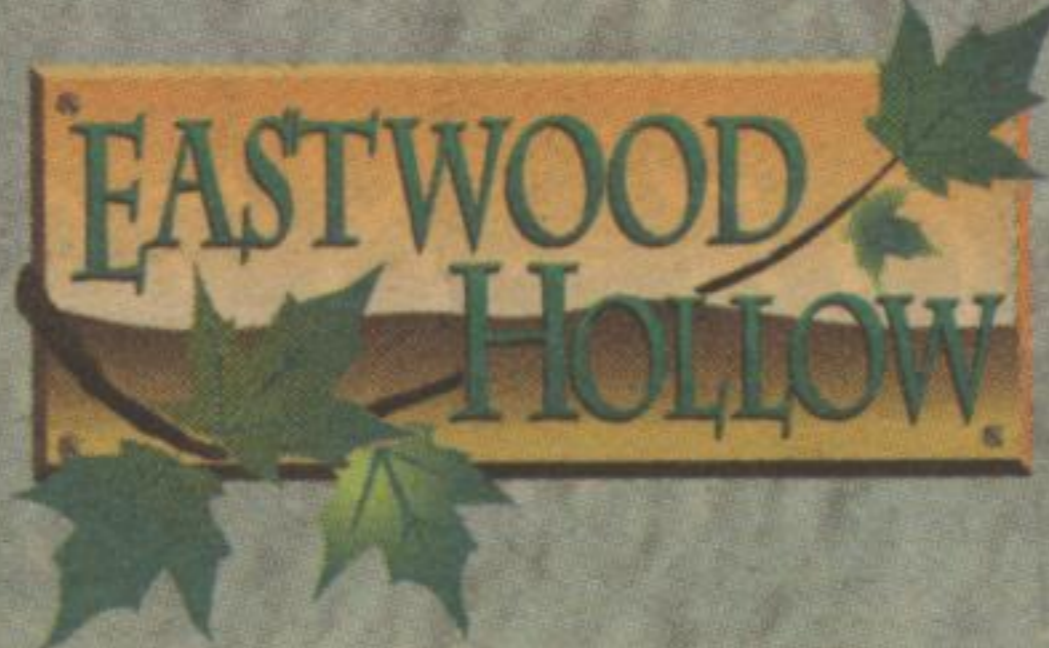
## Welcome to Eastwood Hollow

Brooklyn Homes presents Eastwood Hollow, a new home community neighbouring parks, golf courses, and the Guelph Lake Recreation area. We invite you to tour our brand new model homes, or visit with a Brooklyn Home representative on site.

- Located in scenic area close to parks, Guelph Lake Recreational area, and golf course
- Easy access to Hwy 7 & 24
- Schools and shopping centres to be built within the community
- New models now open



PRICED FROM THE \$130's



For more information call: (519) 821-9008 (Out of town call collect)