

The Independent & Free Press

Sports & Leisure

PULLOUT SECTION

Attrell HYUNDAI

DISCOVER THE BEST VALUES ARE AT ATTRELL

0% PURCHASE FINANCING ON SELECTED MODELS.

2001 SONATA GL

MSRP \$20,495**

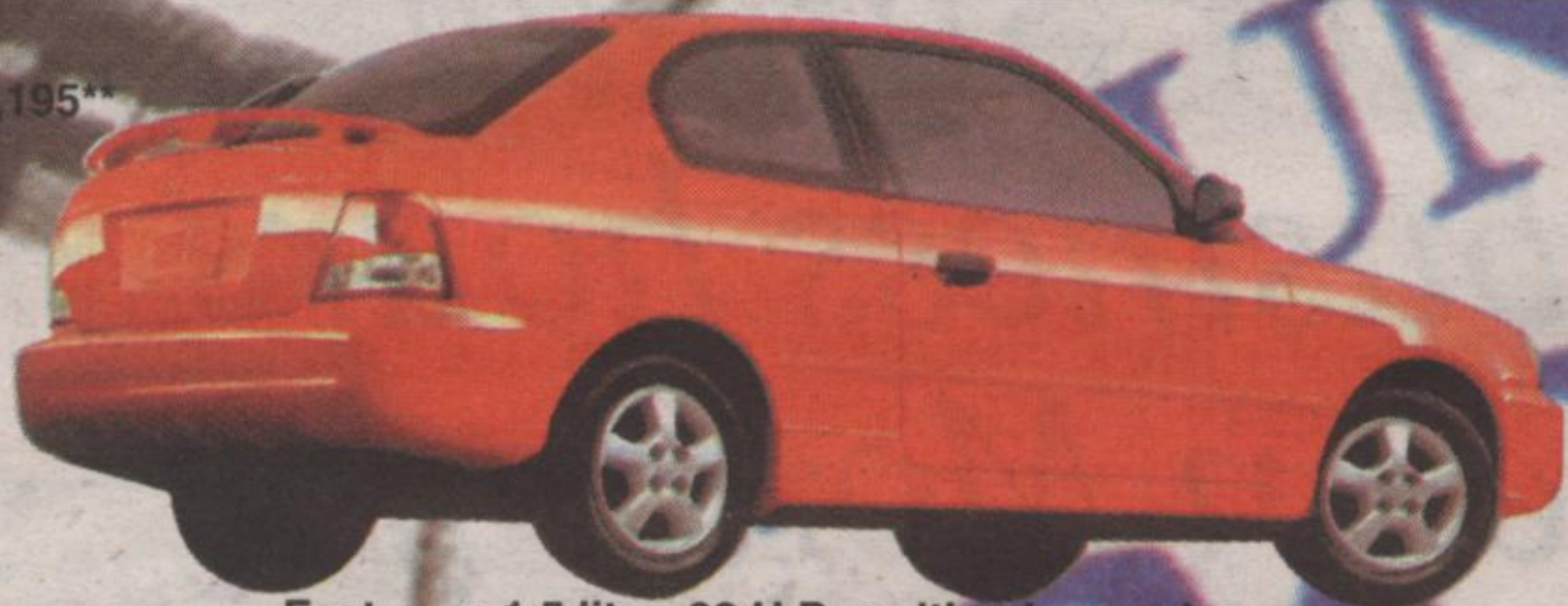
LEASE FROM **\$229*** PER MONTH /48 MOS.
 \$1,995 DOWNPAYMENT
 FREIGHT & P.D.E. INCLUDED
0%



Features: * 2.4 litre 16-valve engine * CFC-free air conditioning * 4-speed electronically-controlled automatic transmission * AM/FM/CD player w/8 speakers * Dual airbags (depowered) with Passenger Presence Detection System * Power windows/door locks * and much more.

PURCHASE FINANCING †
 On all Sonata models. Up to 36 months.

MSRP \$12,195**



2001 ACCENT GS 3 DR.

LEASE FROM **\$0** PER MONTH/48 MOS.
\$179*
 DOWNPAYMENT PER MONTH/48 MOS.
 FREIGHT & P.D.E. INCLUDED
 \$0 SECURITY DEPOSIT.

Features: 1.5 litre, 92 H.P. multi-valve engine
 * Driver's side airbag * 5-speed manual overdrive transmission * 60/40 split folding rear seat * and much more * Check out the great lease rates on the 3-door Accent GSi & the 4-door GL.

0% PURCHASE FINANCING †
 On all Accent models. Up to 36 months.

Check out the great lease rates on the 3-door GSi and the 4-door GL

ALL NEW 2001 ELANTRA VE

"THE BEST PERFORMER"
 "HIGHEST RATING".
 - U.S. Insurance Institute for Highway Safety 5-mph Crash Test Results.



MSRP \$17,525**

LEASE FROM **\$229*** PER MONTH /48 MOS.
\$1495 DOWNPAYMENT
0% PURCHASE FINANCING †
 On all Elantra sedans. Up to 36 months.

Introducing the all new 2001 Elantra VE. Featuring a 2.0 litre, 140 HP engine * Dual (depowered) front airbags * Auto transmission * Air conditioning * AM/FM/CD stereo * Full power group * Cruise control * Tilt steering



2001 TIBURON

MSRP \$19,195**

LEASE FROM **\$199*** PER MONTH /48 MOS.
\$1895 DOWNPAYMENT
0% PURCHASE FINANCING †
 On all Tiburon models. Up to 36 months.

Introducing the all new 2001 Elantra GL. Featuring a 2.0 litre, 140 HP engine * Dual (depowered) front airbags * 5-speed manual overdrive transmission * 60/40 split folding rear seat * power assisted rack-and-pinion steering * AM/FM/CD stereo system w/4 speakers * and lots more!

2001 XG300

MSRP \$31,995**



LEASE FROM **\$365*** PER MONTH /48 MOS.
\$4,495 DOWNPAYMENT
4.8% PURCHASE FINANCING †
 On all XG300 models. Up to 48 months.

Featuring: a 3.0 litre, V6 engine * 5-speed automatic transmission with Shifttronic mode * ABS * Traction control * Dual front & side air bags (de-powered) * Leather seats * Power sunroof * AM/FM/CD stereo system w/6 speakers * Automatic climate control * Cruise control * Power windows, locks & heated mirrors * and lots more!



2001 SANTA FE

MSRP \$25,250**

AWD
 V-6 POWER
 AUTOMATIC



LEASE FROM **\$299*** PER MONTH /48 MOS.
\$3995 DOWNPAYMENT
5.8% PURCHASE FINANCING †
 On all Santa Fe models. Up to 48 months.

2.7 litre V6 engine * all wheel drive * Shifttronic 4-speed automatic * Dual (de-powered) front airbags * AM/FM/CD stereo w/6 speakers * Cruise control * Power windows/door locks * 16" aluminum alloy wheels * and much more.

LONGER LASTING PROTECTION: 3-year/60,000 km Comprehensive Warranty * 5-year/100,000 km Powertrain Warranty * 5-year Anti-Perforation Warranty * 3-year/60,000 km 24 Hour Roadside Assistance Program. Includes fuel delivery service, flat tire changing, lock-out service, towing service and more. Just one toll-free call away, 24 hours a day.

*Leasing program available from Hyundai Financial Services based on 2001 Accent GS 3-Door MSRP from \$12,195, 2001 Elantra VE Sedan MSRP from \$17,525, 2001 Tiburon based on MSRP from \$19,195, 2001 Sonata GL MSRP from \$20,495, 2001 Santa Fe GL MSRP from \$25,250, interest rate 3.84%/4.87%/7.10%/5.72%/6.93%, \$179/\$229/\$235/\$289/\$299 per month for a 48 month walkaway lease. Total lease obligation of \$8,592/\$12,487/\$13,175/\$13,872/\$18,347 and optional purchase price of \$5,711/\$7,841/\$13,189.49/\$10,539/\$11,175. Down payment of \$0/\$1,495/\$1,895/\$0/\$3,995, plus first monthly payment required. Security deposit (\$0/\$350/\$350/\$0/\$350). Freight and P.D.E. for Accent, Elantra, Tiburon included, for Sonata, Santa Fe and XG300 extra. Taxes, license and \$350 administration fee extra. 20,000 km mileage allowance per year applies. Additional km charge of \$0.10. **MSRP for 2001 Accent GS 3-door from \$12,195, 2001 Elantra GL Sedan MSRP from \$14,875, 2001 Tiburon Base MSRP from \$19,195, 2001 Sonata GL MSRP from \$20,495, 2001 Santa Fe GL MSRP from \$25,250. All MSRP prices exclude freight, license, P.D.E. and taxes. Dealer may sell for less. †0% purchase financing available on 2001 Sonata models for 24 or 36 month terms. Financing example: \$10,000 at 0% per annum equals \$277.80 per month for 36 months. C.O.B. is \$0 for a total obligation of \$10,000.00. 3.8% purchase financing available on all 2001 Elantra Sedans for 24, 36 or 48 month terms. Financing example: \$10,000 at 3% per annum equals \$224.90 per month for 48 months. C.O.B. is \$795.20 for a total obligation of \$10,795.20. 5.8% purchase financing available on all 2001 Santa Fe models for 24, 36 or 48 month terms. Financing example: \$10,000 at 5.8% per annum equals \$233.90 per month for 48 months. C.O.B. is \$1,227.20 for a total obligation of \$11,227.20. All purchase and lease offers are for a limited time O.A.C. and may not be combined with any other offer. See dealer for details.

The Attrell Family Has Been Serving Satisfied Brampton Customers for 24 Years!

Attrell



HYUNDAI

310 Queen St. E., Brampton
 (corner of Queen St. & Rutherford Rd.)

905 **451-1699**

24 hr. ROADSIDE ASSISTANCE PROGRAM 5 yr. 100,000 KM WARRANTY

Queen St.		(Hwy. 7)
Kennedy	Hansen	Rutherford
	Hwy. 401	Hwy. 410

Visit our web page at www.attrellauto.com