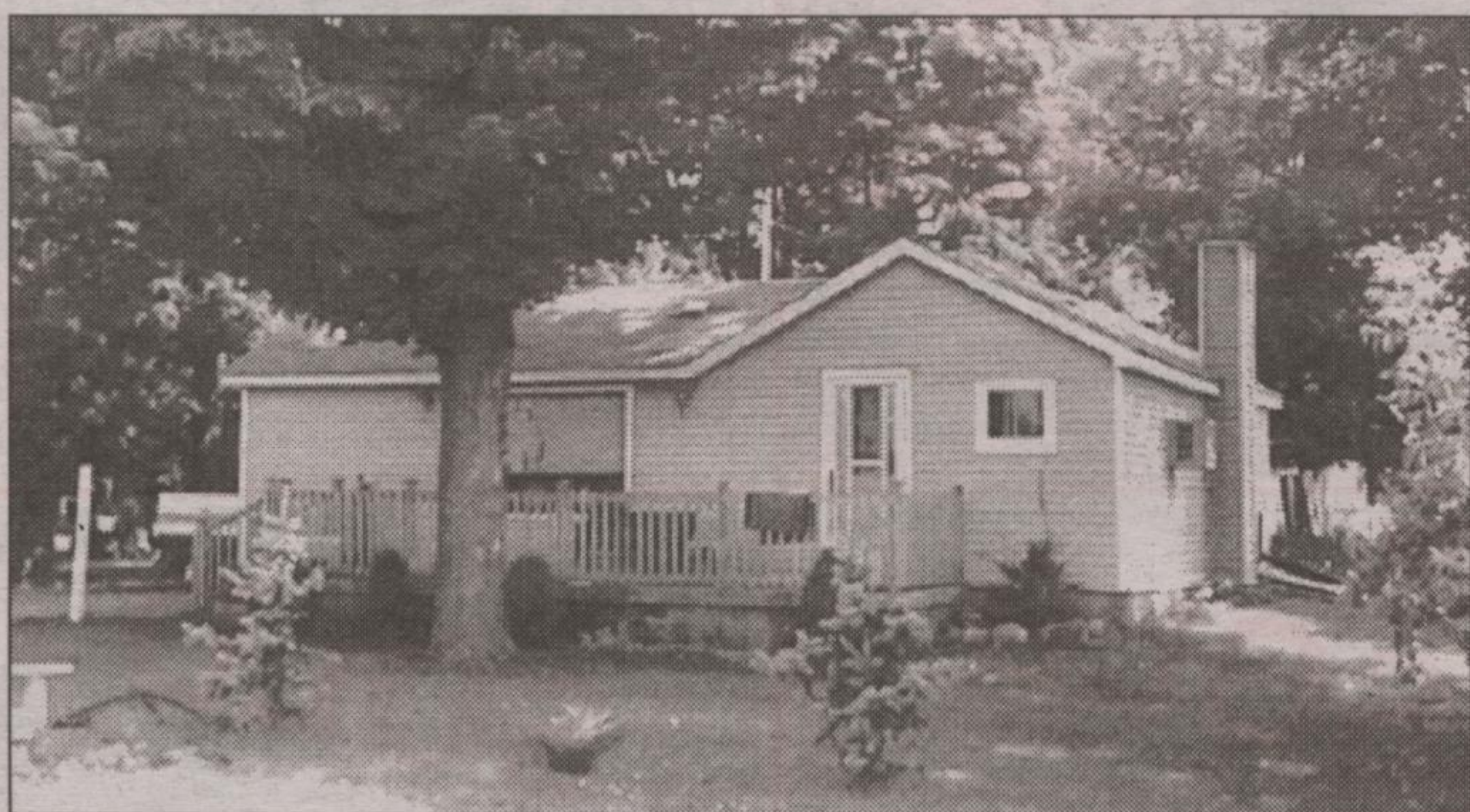




**RICK
CURRY***
Sales Rep.

Johnson Associates
HALTON LTD., REALTOR

877-5165



**NEEDED
SMALL FAMILY FOR
HAMLET LIVING**

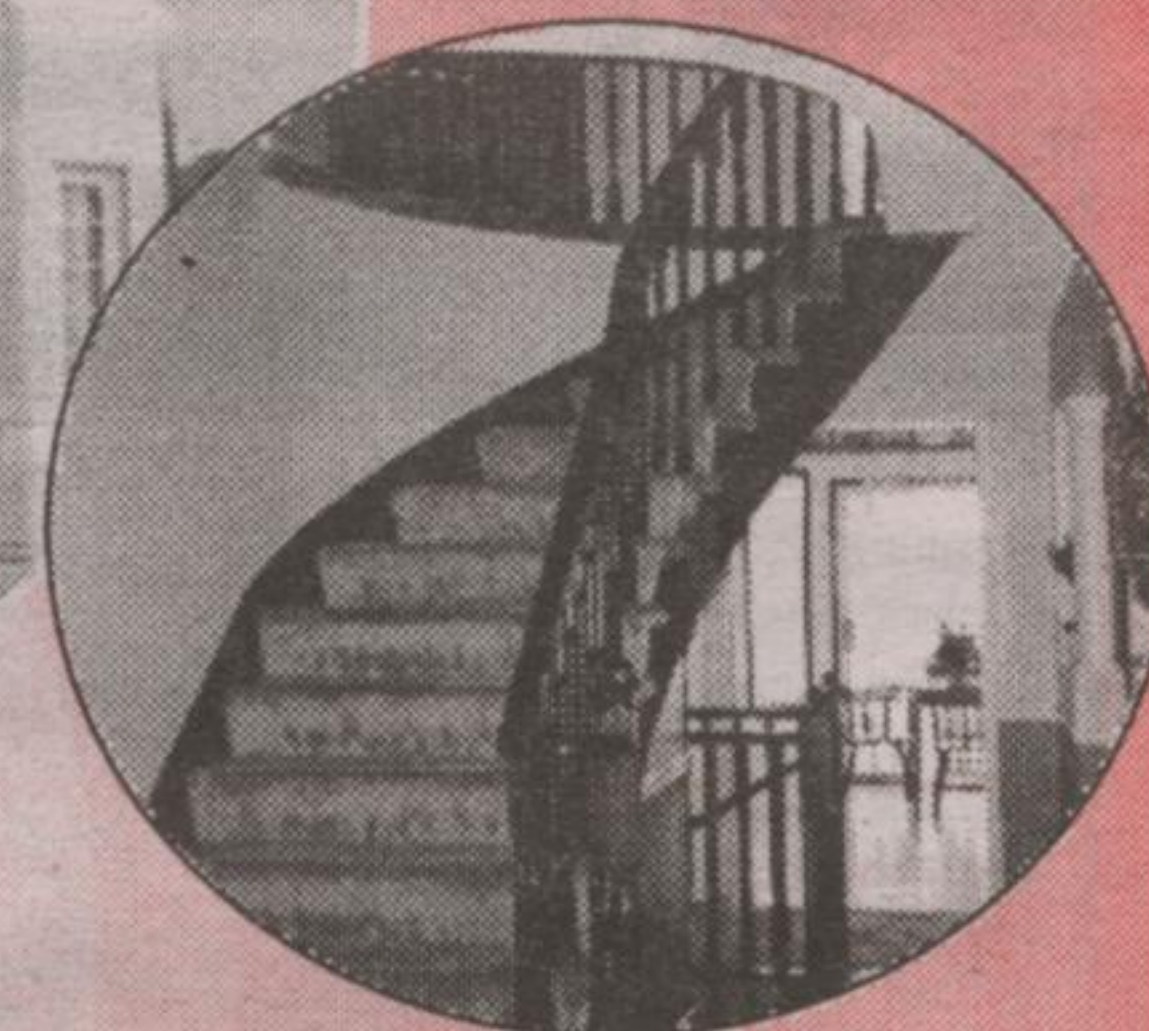
Cute 2 bedroom bungalow with an eat-in kitchen, decks front and back, and a 28 x 18 ft. insulated garage. Call now for viewing. **Rick Curry*** 905-877-5165. 00-549-

"Something Just Doesn't Add Up Here!!"



\$327,900

**2780 SQ. FT.
+ WALKOUT
BASEMENT**



**WOULD YOU PAY \$327,900 FOR A HOME
THAT COMPARES AT \$357,900????**

BUILDER'S PRICE (NEW) ON 40' LOT..... \$312,900.00
PREMIUM LOT (BACKING ON TO GREENBELT)..... 15,000.00TBV
WALK-OUT BASEMENT..... 10,000.00TBV
EXTRAS (PAID TO BUILDER)..... 10,000.00

- Upgraded ceramic tile from foyer through to kitchen • Roman columns on half walls
- Hardwood floors in dining room • Upgraded cabinetry, pantry, lazy susan, microwave shelf
- Upgraded mantel with gas fireplace • Upgraded broadloom • Separate door at back of walkout basement
- Casement windows

EXTRAS (SEPARATE FROM THE OFFER).....10,000.00
\$357,900.00

- Alarm system • Central air • Central vac • Stained glass windows
- Daytime/night time window coverings • ceiling fans and light fixtures
- Built-in entertainment centre

THIS MUST BE WELL PRICED AT —> \$327,900



JESSIE JACOBS* Sales Rep.



Johnson Associates
HALTON LTD., REALTOR

877-5165

Website: <http://www.haltonhills.com/jessiejacobs>
Hot Line # 1-800-660-1328 then dial ext. # in ad



**ELIZABETH
DOELL***
Sales Rep.



(905)

877-5165

Local/Toronto

Johnson Associates
HALTON LTD., REALTOR

www.haltonhills.com/elizabethdoell



Total living area 2,223 sq. ft.



Total living area 1,861 sq. ft.

TAKE YOUR PICK!!!



Total living area 2,622 sq. ft.



Total living area 1,575 sq. ft.

Build the home of your choice on one of three beautiful almost 1 acre lots in charming Glen Williams. Town water and natural gas available - only 4 minutes to the GO station. Truly the best of all worlds. Let's get started on your new home today - Call Elizabeth Doell* for details.

* Sample homes only *

WHAT A BEAUTY!



5 bedroom 4000 sq. ft. home on over 1 acre overlooks the 7th hole on one of the loveliest golf courses in the area. This beautiful home features hardwood floors, walkout basement level, inground pool and so much more. Call Elizabeth Doell* today for your appointment to view this lovely home.

**8 ACRES
IN
LIMEHOUSE
READY TO
BUILD**

Escarpment property. Long views. Ravine ready for your special home. Call Elizabeth Doell*.

**WOW! TAKE
ANOTHER
LOOK!!**



Only \$159,900. Located in well established complex. No condo fees! Huge lot, 3 good sized bedrooms, 2 baths, CAC. Call for your appointment to view. Call Liz Doell*. 00-526-30



Sales Rep.*

**Donna
Robbins***

Johnson Associates
HALTON LTD., REALTOR

(905)
877-5165



\$209,900

- 4 appliances included
- U/G pool and change house
- rec room with gas fireplace
- large eat-in kitchen
- fully fenced huge yard
- assumable 6.2% mortgage



"Helping people find their perfect nest!"