



**HOCKLEY VALLEY - CENTURY LOG - 89 ACRES**  
Charming log home with sunfilled board and batten addition. Stone fireplace, pine floors, screened in sunroom, master with full ensuite. 89 rolling acres, reforested area, pond, meadows and views. Very special at \$599,000. **Martha Summers\*** MATHEWS

**MARTHA SUMMERS\*** Sales Rep.  
Toronto/Local  
**877-5165**  
(905) 874-3040 (Miss.)  
(519) 833-9714 (Erin)  
www.realtor.com/toronto/msummers  
247 Guelph St., Georgetown  
E-mail: **msummers@idirect.com**

President's Circle Award Winner consecutively since 1988  
Performance Group Member consecutively since 1993

JA PRESIDENT'S CIRCLE  
JA PERFORMANCE GROUP

**Johnson Associates**  
HALTON LTD., REALTOR



The fall market has been fabulous. The snow has arrived but the Purchaser's are still out there. If you are thinking of making a move now or in the spring give me a call and find out just how good the market has been.

**MARTHA SUMMERS = PROVEN PERFORMER**



**ABSOLUTE CUSTOM QUALITY - MINUTES TO 401**  
Stone and stucco w/leaded glass windows, w/o from the lower level and a wonderful layout. Situated on a quiet cul de sac on a ravine with huge back yard. Fabulous fieldstone flooring in the front entry, solid oak doors and trim, 3 stone fireplaces, sunfilled oak kitchen overlooking family rm and views of ravine. Mstr bdrm with walkin closet, 5 piece enste and w/o to balcony. Lower level w w/o, "spa" room, brick fireplace and lots of room for your billiard table. First time offered. Very Special!! \$749,000. **Martha Summers\*** JOH-00



**QUALITY BUILDER - EXECUTIVE LOT - 10 MIN TO 'GO'**  
Build your dream on the private wooded 1.4 acres located close to town but with country around. Your choice of style but it can be done for \$325,000 to \$350,000 with lots of quality and charm. Call for details - the builder has an excellent reputation and these lots are hard to find!! **Martha Summers\*** PIK-00



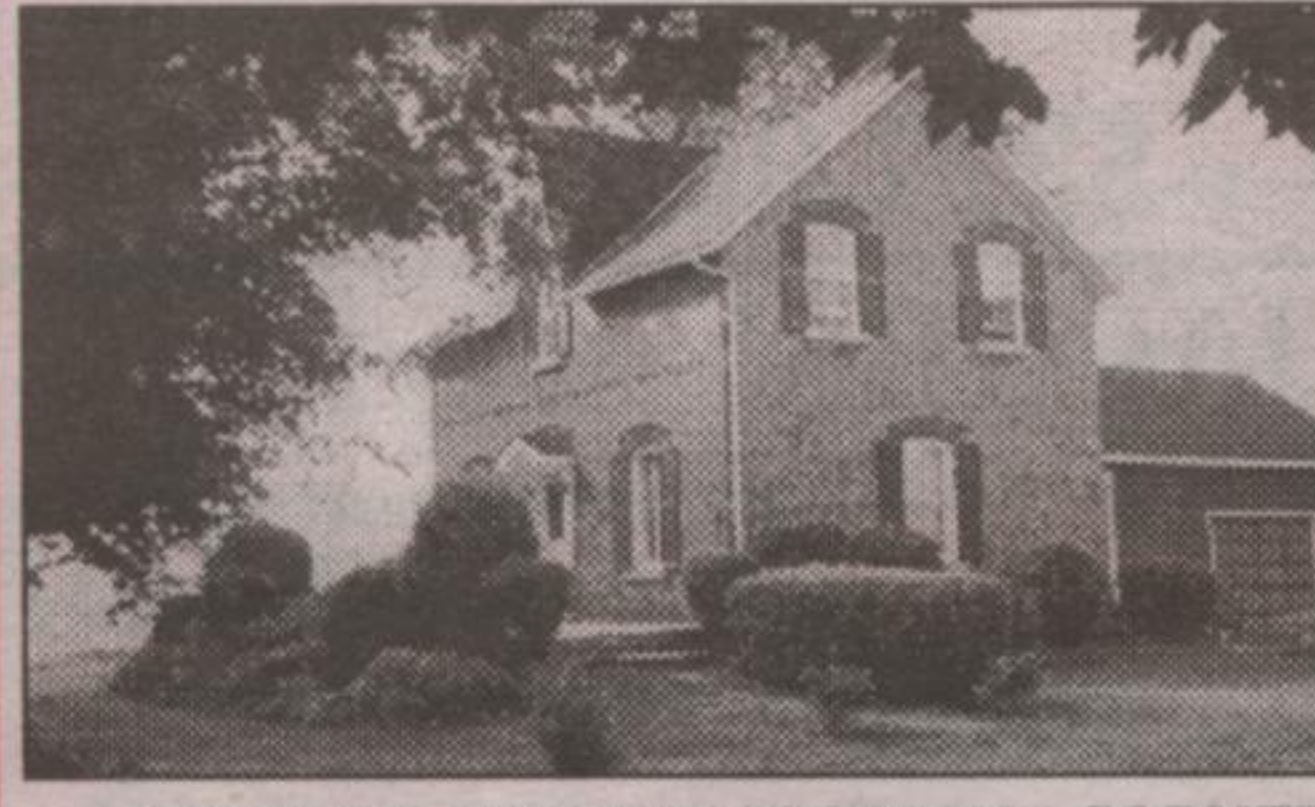
**NEW PRICE**  
**IMMEDIATE POSSESSION AVAILABLE \$164,000**  
Cozy and spacious 2 bdrm bungalow, upgraded but with lots more potential. Lrg separate living and dining rm. Dining rm with wainscotting and high ceilings. Enclosed front porch. 2 spacious bdrms, upgraded bathroom. Loft potential! Walk to "GO". **Martha Summers\*** STO-00



**ABSOLUTE PRIVACY - LOG HOME IN THE COUNTRY - 48 ACRES**  
Wind down the treed driveway to this wonderful setting on which is situated in a bedroom log home with character and perfection. Watch the sunsets, watch your animals in the fields, watch the wildlife on the pond. Loafing barn with 2 stalls. Very Special at \$549,000!! **Martha Summers\*** DEV-00



**10 MINUTES TO 401 - CHARM IN THE COUNTRY**  
Wind through the maples to your charming 4 bedroom home with main floor master with full ensuite. Great views from the eat-in kitchen. Super main floor family room with fireplace and beamed ceiling. Lovely gardens, fenced dog run, 2+ car garage and more! \$405,000. **Martha Summers\*** MIT-00



**CENTURY BRICK VICTORIAN - CORNER FARM - 99 ACRES - PARK LIKE SETTING \$475,000**  
Well maintained 3 bdrm with upgraded oak kitchen, main flr family room and upgraded bathrooms. Wonderful 99 acres on paved road, cropped land, pond, bush and views with walking trails. Large bank barn in good repair plus separate 2 car garage. **Martha Summers\*** MCK-00



**4 CAR GARAGE .9 ACRES MINUTES TO GEORGETOWN \$539,000**  
It's all here, fabulous custom 4 bdrm with full fin lower level, pool, separate pool house/garage all on a paved road close to "GO". Superb oak kitchen overlooking family room and also with access to four season sunroom which overlooks the pool and garden. Vendors hate to leave so are just building a smaller home in similar location. **Martha Summers\*** BOS-00



**2 SEPARATE BUNGALOWS ATTACHED BY DOUBLE CAR GARAGE \$649,000**  
**TERRA COTTA - 15 ACRES - WOODS - POOL - LARGE POND - 5 STALL BARN**  
Fabulous opportunity to share all the joys of country living. Upgraded 3 bdrm bungalow with full basement. Barzotti kit., hdwd flrs., sunken living rm + w/o to patio. 2 bdrm home w/lrg country kit. overlooking pond + woods, plus full basement w/fireplace and billiard room. Sep. entrance to both. Very private in prime location. **Martha Summers\*** DEG-00



**ALL STONE - 2 ACRES - 10 MIN TO 401 - \$575,000 - FIRST-TIME OFFERED**  
Gourmet kitchen with 2 storey height, skylights, pine cabinets, walk in pantry, bkfst bar plus eating area plus views of family room with fireplace. Sep. living room, main level office, 2 main level bdrms both with walkin closets and full ensuites + 2 bdrms up. Courtyard/patio, pond, BASKET BALL COURT, and private treed lot. **Martha Summers\*** ENR-00



**DESIRABLE ESTATE SUBDIVISION - 1.3 ACRE MATURE LOT - \$469,000**  
Fabulous 4+ bdrm executive of approx. 4200 sq. ft. on a treed lot on a quiet street in a mature area. Recent hardwood, huge oak country kitchen with walkout to private deck overlooking extensive gardens. Main level office and fam rm. Full finished lower level at walkout with 2nd kitchen, 2 bdrms, rec room with fireplace and full bath. Great for the in-laws! **Martha Summers\*** SJA-00



**CENTURY CHARM - BRIMSTONE NEAR BELFOUNTAIN - \$329,000**  
Gardeners delight on quiet dead end street with conservation lands nearby. Century home set well back on lot, separate 2 car garage, views of escarpment. Hardwood floors, fireplace, beamed ceiling, main floor fam. rm w/o to gardens. 2 spacious bedrooms + upgraded bathroom. cozy retreat or great full time residence. Close to Caledon Ski Club. fishing and riding. **Martha Summers\*** BUT-00



**5674 2ND LINE, ERIN**



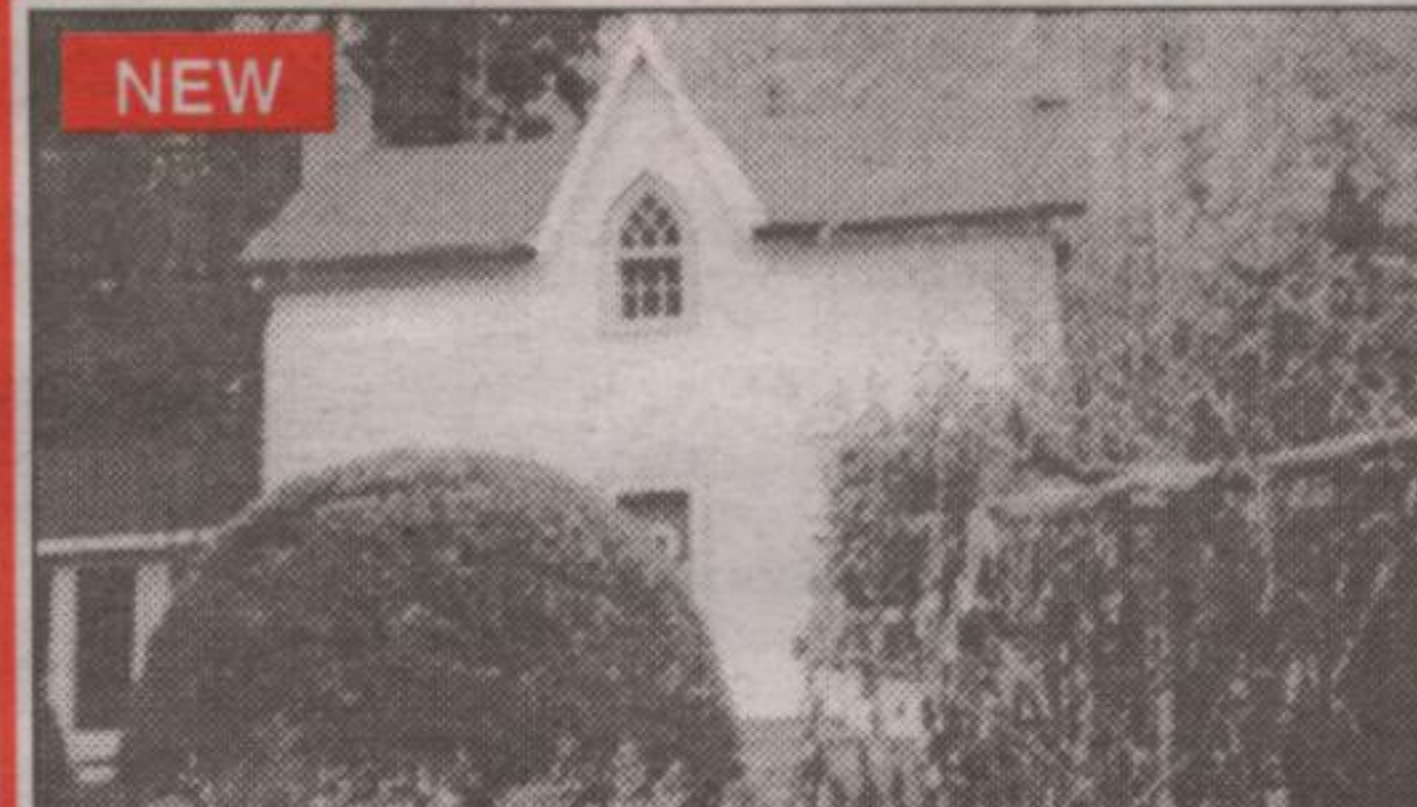
**5690 SIXTH LINE, ERIN**



**5674 2ND LINE, ERIN**



**5690 SIXTH LINE, ERIN**



**5083 WELLINGTON ROAD 125, ERIN**



**PERFECTION ON 5 ACRES**

**AVAILABLE LAND - Martha Summers\***

Halton - 1.4 treed acres, paved road, 10 min. to "GO", privacy at \$149,900  
2 Plus Acres - Caledon location near conservation & stream. \$54,900.

**Belfountain South** is just a great location to own 132 acres of rolling, forested and open land. A great investment at \$350,000.  
**NEW - 11 Acres - Hockley Valley - Rolling, reforested, open meadow, minutes from #9 + Airport Road. Hurry it's at \$169,000.**

**Martha Summers\***

**"MARTHA SUMMERS = PROVEN PERFORMANCE"**