

HASSELL



QUALITY USED CARS

\$39⁹⁵* INCLUDES... \$92.00 Value
*most cars & trucks

- Lube, Oil and Filter
- Check for tune-up • Rotate & balance tires
- Check all fluid levels, belts, hoses & battery
- Inspect suspension & steering
- Inspect fuel systems • Inspect exhaust system



Warranty

98 626
Auto,
Loaded **\$16,000**



Warranty

95 GRAND AM
V6, Auto,
Loaded **\$7,800**



Warranty

94 GRAND AM
Loaded, V6, Auto,
Excellent Shape **\$7,400**



Warranty

95 NISSAN PICK-UP
4 cyl., 5 Speed,
Clean Truck **\$7,000**



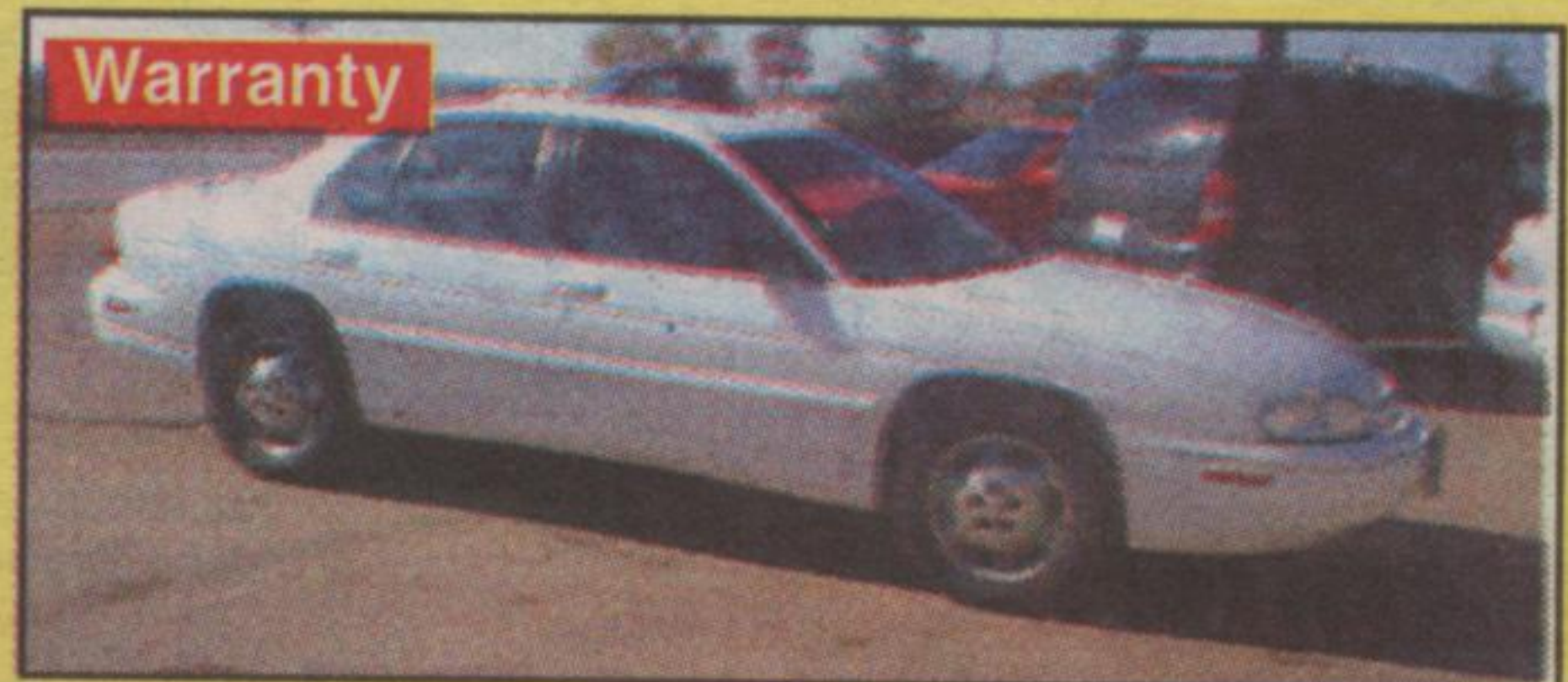
Warranty

97 LUMINA
Excellent Shape, Low
Kilometers, Loaded **\$12,400**



Warranty

94 CAVALIER
V6, 5 Speed,
Air **\$5,500**



Warranty

95 LUMINA
V6, Auto
Loaded **\$9,600**



Warranty

94 OLDS CUTLASS
Excellent Shape, V6,
Auto, Loaded **\$9,400**

Dave Hassell 877-7958
45 MOUNTAINVIEW RD. N., GEORGETOWN L7G 4J7



Hike in property assessments won't necessarily translate into higher taxes

Continued from pg. 1

only increase if town or region budgets are increased or tax policies— such as the amount of education taxes residents pay— are changed.

Overall the average residential increase in Halton Hills is 15 per cent compared to the overall region-wide increase of 16 per cent. Values for Halton Hills commercial properties have gone up an average five per cent since 1996 and industrial assessments have risen 22 per cent.

The next reassessment in 2002 will be based on June 2001 values. Beginning in the 2006 taxation year, assessment will be based on a rolling average of the previous three years.

While the Halton-Peel office normally receives about 400 calls a day, on Wednesday— the day after the notices were mailed— it received 862 calls. The office will be holding three information sessions in Halton Hills on Dec. 11, 12, 13. These sessions are an opportunity for residents to learn in general terms about the new assessment values and the trends— they are not an opportunity to discuss individual concerns or complaints, Farr stressed. On Monday, Dec. 11 and Wednesday, Dec. 13, sessions will be held 7:30 p.m.-9 p.m. at the Gordon Alcott Arena in Georgetown. On Tuesday, Dec. 12, a 7:30 p.m.-9 p.m. session will be held at the Acton Arena and Community Centre.

Residents can also call the OPAC call centre, toll-free 1-866-296-OPAC or the Halton-Peel office, (905) 813-9930, toll-free, 1-800-387-5909, or e-mail: ao15@opac.on.ca.

Residents can also drop into the local office which is having extended hours until Dec. 8, from 8 a.m. to 6 p.m. It's located on the corner of Hwy. 401 and Mississauga Rd. at 6745 Century Ave., Suite 1 in Mississauga.

—By Cynthia Gamble, staff writer



Janet Brereton

Experience "Grand Class Cruising"

Janet Brereton, would like anyone who is thinking of a cruise vacation, to know that she has just returned from a week on Princess Cruises, luxury ship the OCEAN PRINCESS.

Janet spent many hours while on board learning all there is to know about the Princess Cruise Product.

Give Janet a call and see if this is the vacation you've been looking for!

328 Guelph St.
Georgetown
873-2000

