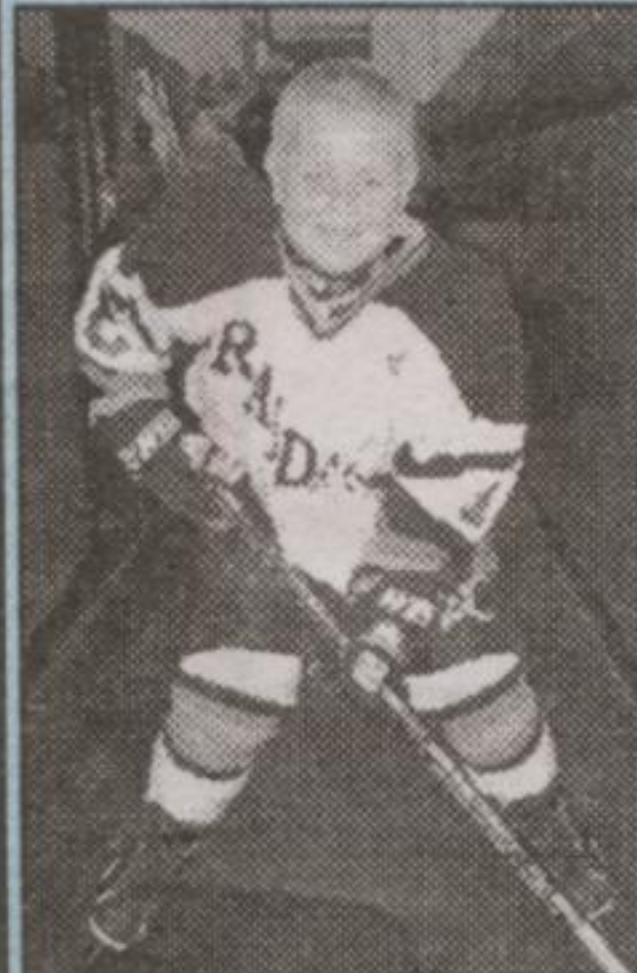




This year we are featuring the Georgetown Minor Novice Raiders. This group of 8 year olds are representing Georgetown in the Double "A" loop in the OMHA. There home games are every Tuesday at 6:30 p.m. at Memorial Arena. Why not come out and watch them play?

PLAYER PROFILE

JESSIE SIMONSEN



No. 7
 Weight: 52 lbs.
 Position: Left Wing
 Shoots: Left
 Last Years Team: House League
 Stuff He Likes: Road Hockey
 When I Grow Up I Want To Be: A NHL Player

RE/MAX

BLUE SPRINGS REALTY (Halton) CORP.

TORONTO (905) 874-3051

GEORGETOWN (905) 877-5211

ERIN (519) 833-7117

CHECK OUT THE INSIDE OF THESE HOMES THROUGH THE "REMAX VIRTUAL TOUR" BY SIMPLY GOING TO www.davekrause.com AND ENTERING YOUR PRICE RANGE!



NEW

EXECUTIVE HOME IN ERIN

This 2 storey 4 bdrm, open concept 3800 sq. ft. all brick 1 year new home overlooks the west branch of the Credit River and is beside the Caledon-Erin-Elora recreational trail. The house itself is gorgeous. As you enter the front door the foyer opens to the DR, office, FR & staircase to the bdrms. The MBR has a large sitting room with a gas FP. The FR has a wonderful brick gas FP & is a combination with a large kit. Priced at \$424,900. Call Dave Krause* to view.



NEW

POOL SIZE LOT

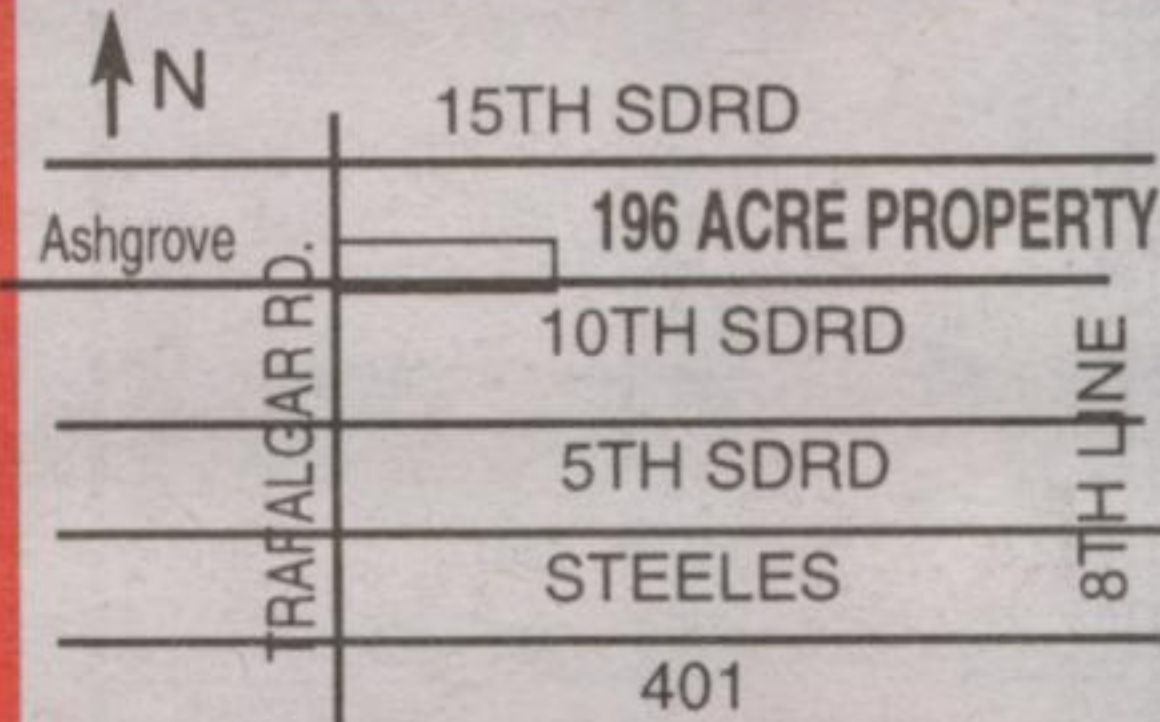
Looking for that newer home that has a lot big enough to put in a pool for those warm summer nights? This home meets that need. This open concept raised bungalow located close to parks, tennis courts & a junior public school features large country kitchen with w/o to a deck, full basement with large windows above grade. Double car garage, fenced yard, central air. Priced at \$226,900. Call Dave Krause* to view.



NEW PRICE

4 BEDROOM HOME IN MILTON

Gorgeous all brick home close to schools & park. Features include new kitchen addition, M/F laundry, M/R family room with fireplace. Ceramics in kitchen & hallway '98, broodloom '98, Series 800 doors throughout most of the house, C/A '99, roof '96. Good size lot, beautifully landscaped, walkout from family room to covered patio with skylight. Priced at \$269,000. Call Dave Krause* to view.



196 ACRES GEORGETOWN SOUTH

This 196 acre property is adjacent to the Urban area of Georgetown as outlined in the Official Plan of Halton Hills. It is presently being used as a farm with a house & buildings. The property is located at the corner of 8th Line & 10 Sdrd with its borders being west of 8th line, north of 10 Sdrd and east of 7th Line (Trafalgar Rd.) at Ashgrove. Priced at 4.9 million. Call Dave Krause* to view.



NOW

\$189,900

WORTH A LOOK SEE!

- New roof • New bathroom
 - Finished basement with gas fireplace
 - Air conditioning • Upgraded windows • Deep 126' lot
- Call Dave Krause*.



PRICE CHANGE

BALLINAFAD BEAUTY

For only \$1500 per month p&t, you can own this lovely ranch home just 15 minutes from the Georgetown GO Station. Warm yourself by the cosy fire in the rec room, shoot pool in the games room, or hide out in the barn doing the hobbies you love to do. The kids will want to flood the huge backyard for skating, and then, next summer, you can put in that pool you've always wanted. Priced at \$255,000. Call Dave Krause* to view.



GREAT PRICE GREAT LOCATION

This all brick ranch style 2 storey home is located approximately 200 yds west of Mississauga Rd. on The Grange Sdrd in Caledon. Features of this open concept home that sits on over 1 acre includes: large country kit. overlooking the backyard, a woodburning FP accents the liv. & din. rms, main floor family room. Recently repovated sun room with lots of windows overlooks over the back of the property. 3 pc. ensuite off master bdrm, double car garage, loads of parking. Priced at \$305,900. Call Dave Krause* to view.

When you're selling your home, time is of the essence. Why wait? Call me for a FREE market evaluation. Do you have any questions regarding listing your home? I can help! Call DAVE KRAUSE

877-5211

Another service for my clients: Visit us at our WEBSITE www.davekrause.com E-MAIL us at: davekrause@aztec-net.com



I can also save you time and money by arranging all your financing needs! Call me today to discuss your mortgage requirements. Not intended to solicit any properties already listed.



Rychard McKeown Sales Associate

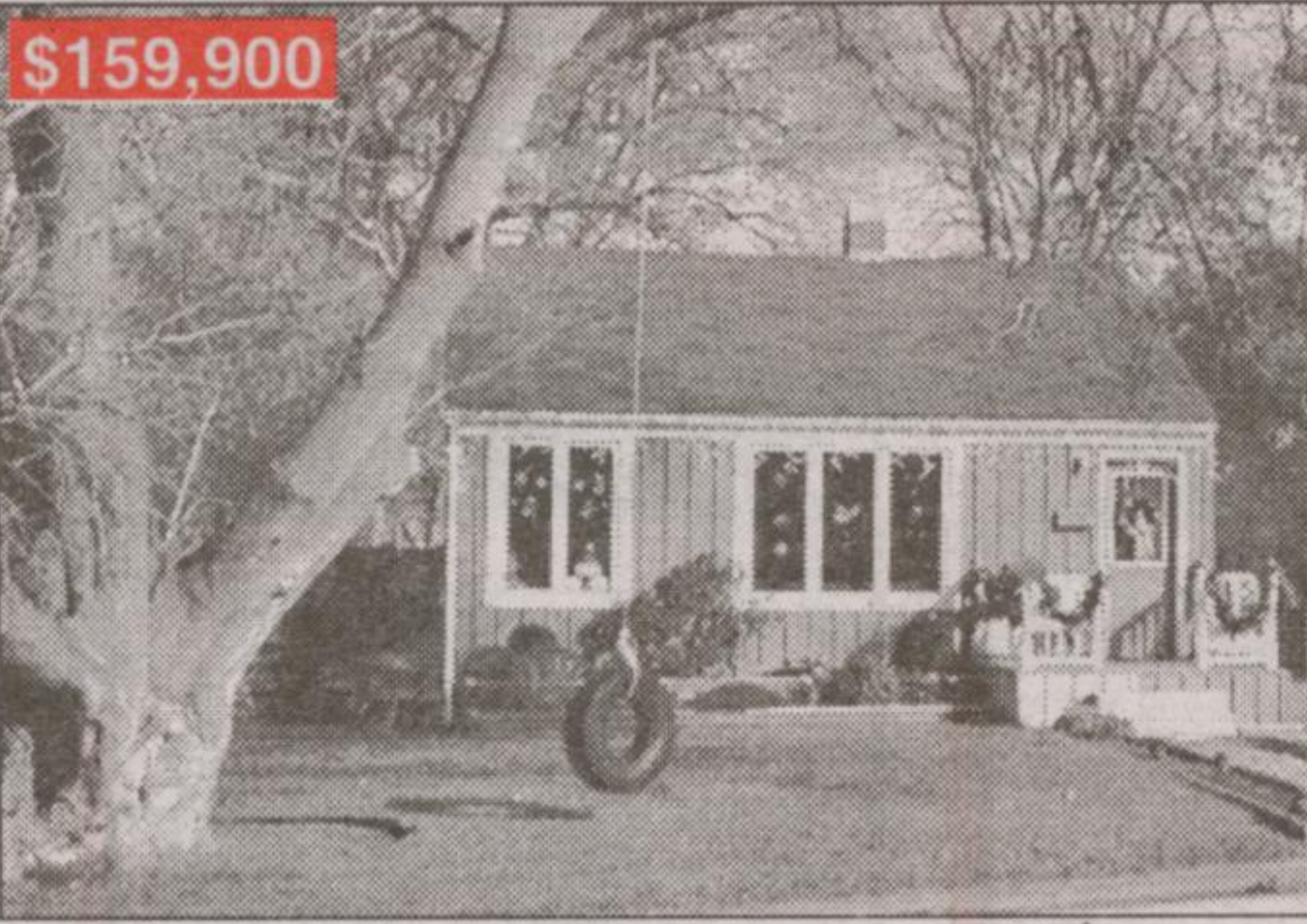
RE/MAX

BLUE SPRINGS REALTY (Halton) CORP.

(905) 877-5211 (905) 874-3051

rychard@aztec-net.com

Receive my free booklets, "Selling Your Home For All It's Worth" and buyers "First Aid" kit.



\$159,900

YOU'VE FOUND IT!!!

Exclusive listing in Georgetown close to schools. This cute 2 bedroom home has a HUGE lot, new kitchen, new bathroom and hardwood floors. Very tastefully decorated. You'll love it. Live here for only \$159,900.



NEW

\$379,900

LIMEHOUSE

A gorgeous raised bungalow close to town w/attached double car garage. 3 br up & 2 down, featuring large ceramic tiled central foyer leading to 2 levels & 'Canada' sunroom w/hot tub & woodburning stove; upper level has large eat-in kit & formal DR & LR w/gas FP; lower level has 2nd kit & bathroom for inlaws with lg LR w/FP. Above ground pool & workshop/studio complete the picture!

EXPOSE YOUR HOME ON THE NET.
www.rychardmckeown.com
 CALL NOW!!

RE/MAX

BLUE SPRINGS REALTY (Halton) CORP.

360 Guelph Street, Georgetown

NORINNE KILGOUR

Sales Representative

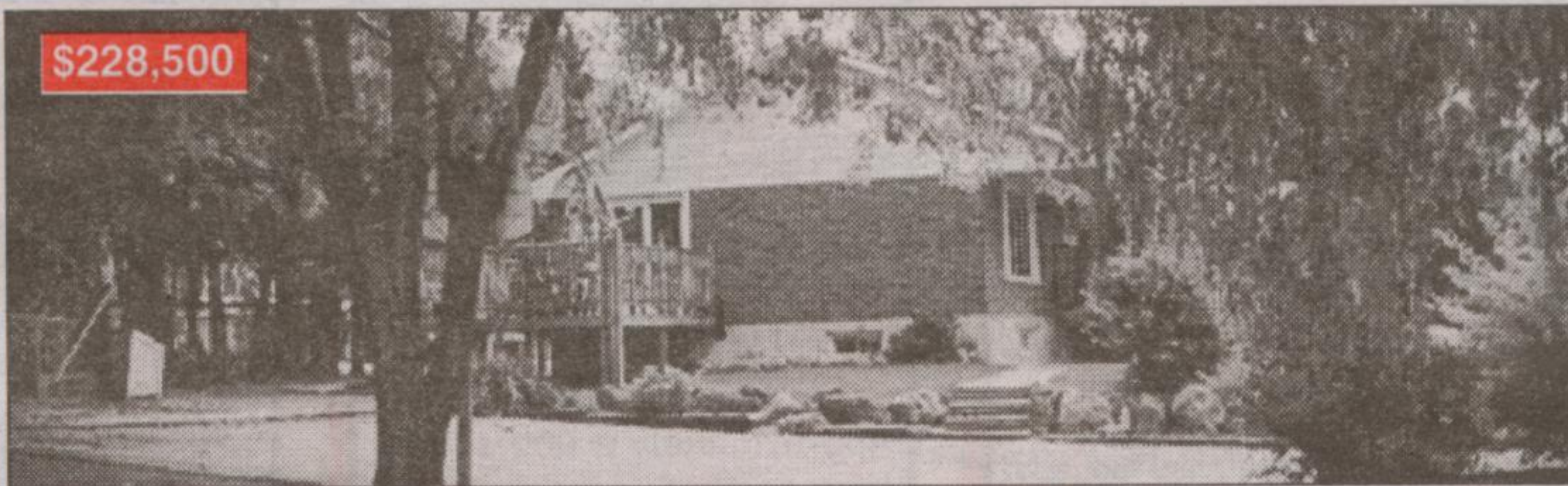
RE/MAX HALL of FAME Member



877-5211

Erin (519)

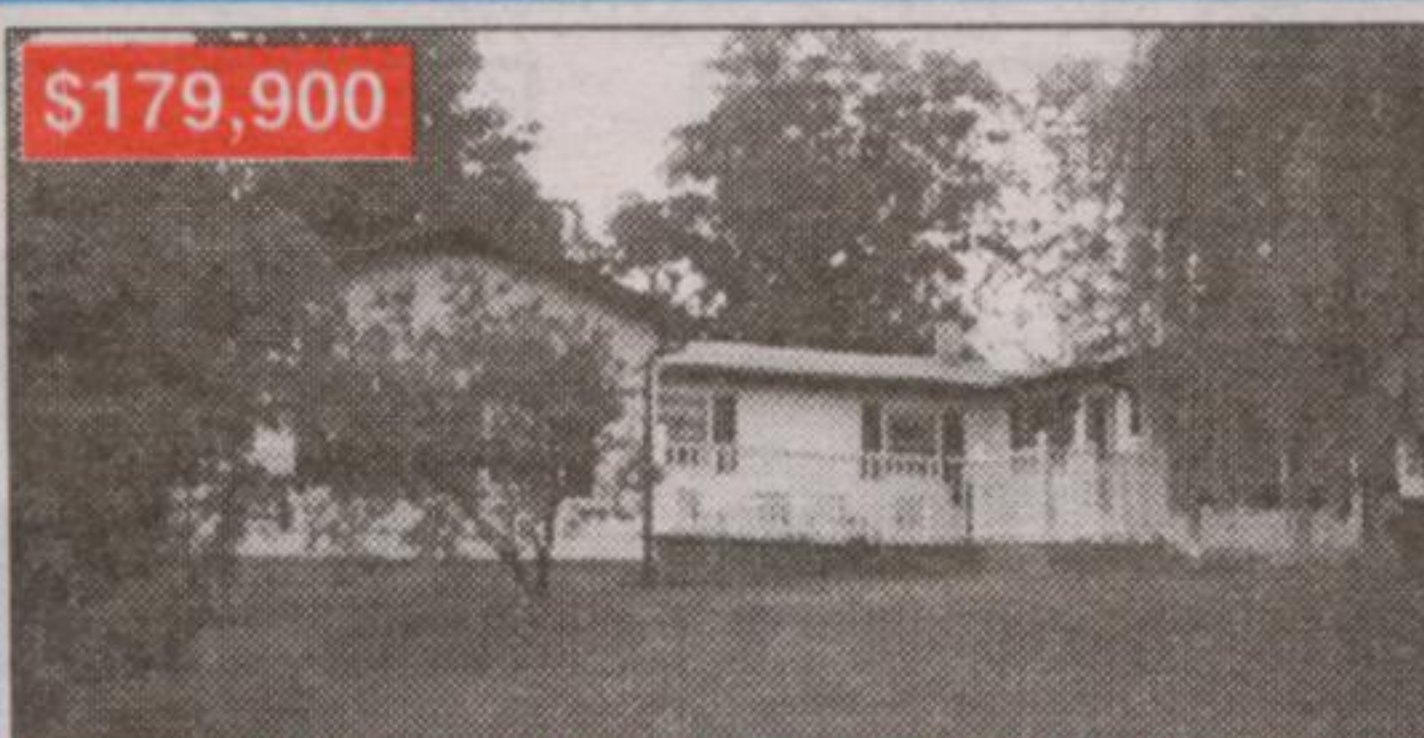
833-7117



\$228,500

4 BEDROOM RANCH BUNGALOW

Country setting, open concept living area, newer kitchen leads to 12 x 15' deck. The home has been recently decorated. The lower level has large rec room, games room and 5th bedroom, suitable for in-law suite or the growing family. To add to the attraction is a 6.24% mortgage until 2009. Call now for more information. MLS#X34682



\$179,900

TRUCKERS NEEDED \$179,900

This 3 bedroom bungalow on over 3/4 acre near Hillsburgh has spacious rooms and main floor laundry. There is a large deck both front and back. Home could be made wheelchair accessible. Call for an appointment today. MLS #X34691



QUICK CLOSING

\$199,000

IMMACULATE BRICK BUNGALOW

Don't miss this one, you won't be disappointed. Located in Erin Village and walking distance to all amenities. Large yard, double paved drive. The rec room is huge, done in knotty pine. Perfect for entertaining. Exceptionally well maintained home. MLS#X35535