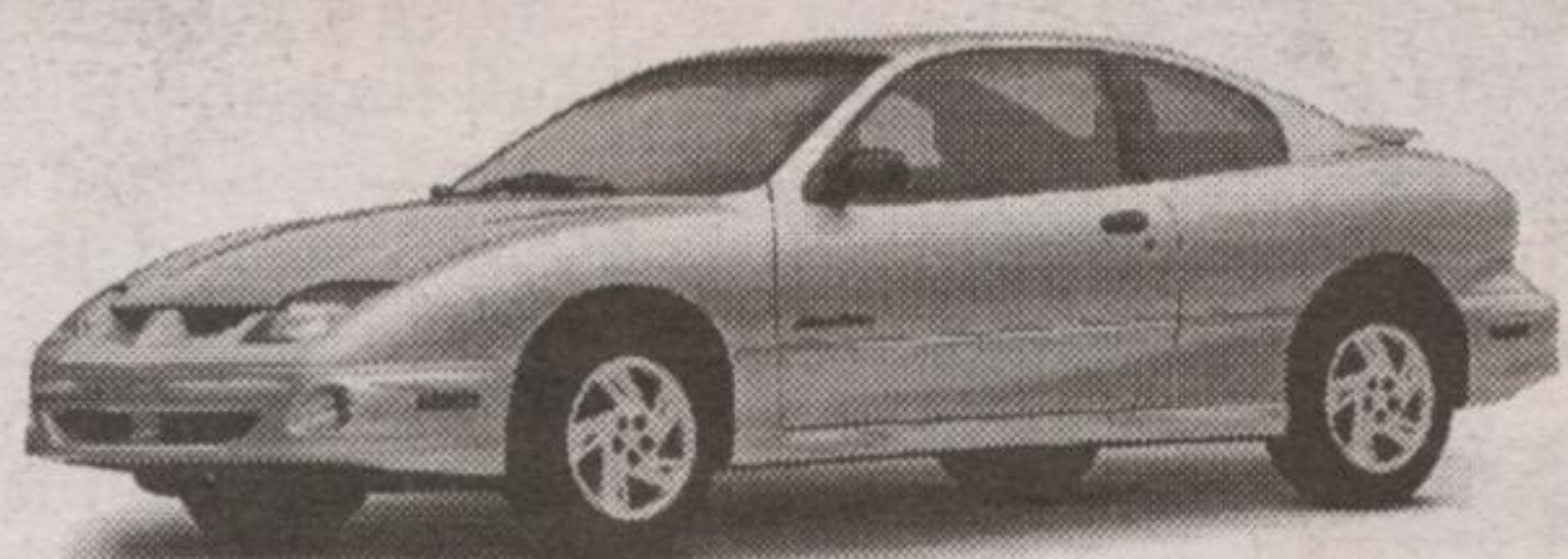


ON VIRTUALLY ALL 2000 AND 2001 MODELS

NO ^{††} **DOWN PAYMENT**
NO **PAYMENTS FOR 90 DAYS**
NO **INTEREST FOR 90 DAYS**
 (GENERAL MOTORS PAYS THE INTEREST)

ON PURCHASE FINANCING UP TO 48 MONTHS



2001 PONTIAC SUNFIRE COUPE

- 5-YEAR/100,000 KM POWERTRAIN WARRANTY
- Remote Keyless Entry • Power Locks
- 6-Speaker CD System • Theft-Deterrent System • Anti-Lock Braking System

SMARTLEASE per month/48 months LEASE RATE/PURCHASE FINANCING
\$198 OR **1.9%**
\$1,380 down payment, \$730 freight and \$300 security deposit required up to 48 months*



2001 GRAND AM SEDAN

- 2.4 Litre Twin Cam 150 HP Engine • 4-Speed Automatic Transmission with Enhanced Traction System • 4-Wheel Anti-Lock Braking System
- 4-Wheel Independent Suspension • Air Conditioning

CHOOSE 2-DOOR OR 4-DOOR

CASH PURCHASE SMARTLEASE per month/36 months
\$19,998 OR **\$268**
excludes freight \$770 \$2,600 down payment, \$770 freight and \$325 security deposit required



2001 BUICK CENTURY

- 3.1 Litre V6 175 HP Engine • 4-Speed Automatic Transmission with Enhanced Traction System • 6-Passenger Seating with Quiet Interior • 6-Way Power Driver's Seat • AM/FM Stereo Cassette with Steering Wheel Controls

SMARTLEASE per month/36 months PURCHASE PRICE
\$328 OR **\$25,498**
\$3,020 down payment, \$895 freight and \$400 security deposit required excludes freight \$895



2001 GMC JIMMY 2-DOOR

- 4.3L Vortec V6 190 HP Engine • 4-Speed Automatic Transmission • Air Conditioning
- Bose® Premium Sound System • Power Door Locks/Windows/Mirrors

LEASE RATE CASH PURCHASE
1.9% OR **\$29,998**
up to 36 months excludes freight \$810



2001 GMC SIERRA EXTENDED CAB

- 270 HP Vortec 4800 V8 Engine • Automatic Transmission with Overdrive and Tow/Haul Mode
- Air Conditioning with Interior Air Filtration System • 4-Wheel Disc & 4-Wheel Anti-Lock Braking System

SMARTLEASE per month/36 months
\$398
\$3,440 down payment, \$990 freight and \$475 security deposit required



2001 PONTIAC MONTANA

- 3.4 Litre V6 185 HP Engine • 4-Speed Automatic Transmission • 4-Wheel Anti-Lock Braking System • Air Conditioning • Power Door Locks/Mirrors • Tilt-Wheel™

SMARTLEASE per month/36 months LEASE RATE/PURCHASE FINANCING
\$278 OR **2.9%**
\$4,300 down payment, \$940 freight and \$325 security deposit required up to 36 months*/up to 48 months†



GMC

Plus: Firebird, Grand Prix, Bonneville, Regal, LeSabre, Park Avenue, Sonoma, Pontiac Aztek, Safari, Yukon, Yukon Denali, Yukon XL, Yukon XL Denali, Savana.

††ALSO AVAILABLE ON 2000s IN DEALER STOCK

LIMITED TIME OFFER

For the latest information, drop by your local Pontiac • Buick • GMC Dealer, visit us at gmcanada.com or call 1-800-GM-DRIVE.

††Offer available on GMAC Purchase Financing contracts with terms up to 48 months only. Excludes 2001 C/K 2500/3500 Pickups & Chassis Cabs. *Offers based on Sunfire Coupe R7Z, Grand AM Sedan R7Z, Century R7Z, Jimmy 2-Door R7A, Sierra Extended Cab R7L, Montana R7A. Annual cost of borrowing 1.9%/3.9%/5.9%/1.9%/8.4%/2.9% per annum. Annual kilometre limit of 20,000 km, \$0.12 per excess kilometre. Option to purchase at lease end is \$7,107.90/\$10,722.60/\$13,859.25/\$17,674.05/\$16,840.75/\$14,200.20 (Sunfire Coupe R7Z/Grand AM Sedan R7Z/Century R7Z/Jimmy 2-Door R7A/Sierra Extended Cab R7L/Montana R7A) plus applicable taxes. Other lease options available. ††Freight (as indicated), licence, insurance, P.P.S.A., administration fees and taxes not included. Dealers are free to set individual prices. †The SMARTLEASE monthly payment and the GMAC purchase finance rate are not available with and are not calculated on the "Cash Purchase Price" shown. The difference between the price for the SMARTLEASE/GMAC Purchase Finance offer and the "Cash Purchase" offer is deemed under provincial disclosure laws to be a cost of borrowing, whether or not the same represents actual interest and is required to be expressed as an actual percentage rate which is 6.95%/6.35%. ‡Financing on approved GMAC credit only. Example: \$10,000 at 2.9%/1.9% APR, the monthly payment is \$220.90/\$216.52 for 48 months. Cost of borrowing is \$603.20/\$392.96. Total obligation is \$10,603.20/\$10,392.96. Down payment/trade and/or security deposit may be required. Monthly payment and cost of borrowing will vary depending on amount borrowed and down payment/trade. ††Offers apply as indicated to select 2001 new or demonstrator models equipped as described and to qualified retail customers in the Ontario Pontiac Buick GMC Dealer Marketing Association area only. Limited time offer which may not be combined with other offers. Dealer trade may be necessary. See your Dealer for conditions and details.



PONTIAC • BUICK • GMC