



**Distinctive
Heritage Style
Homes on
1 1/2 Acre
Estate Lots**

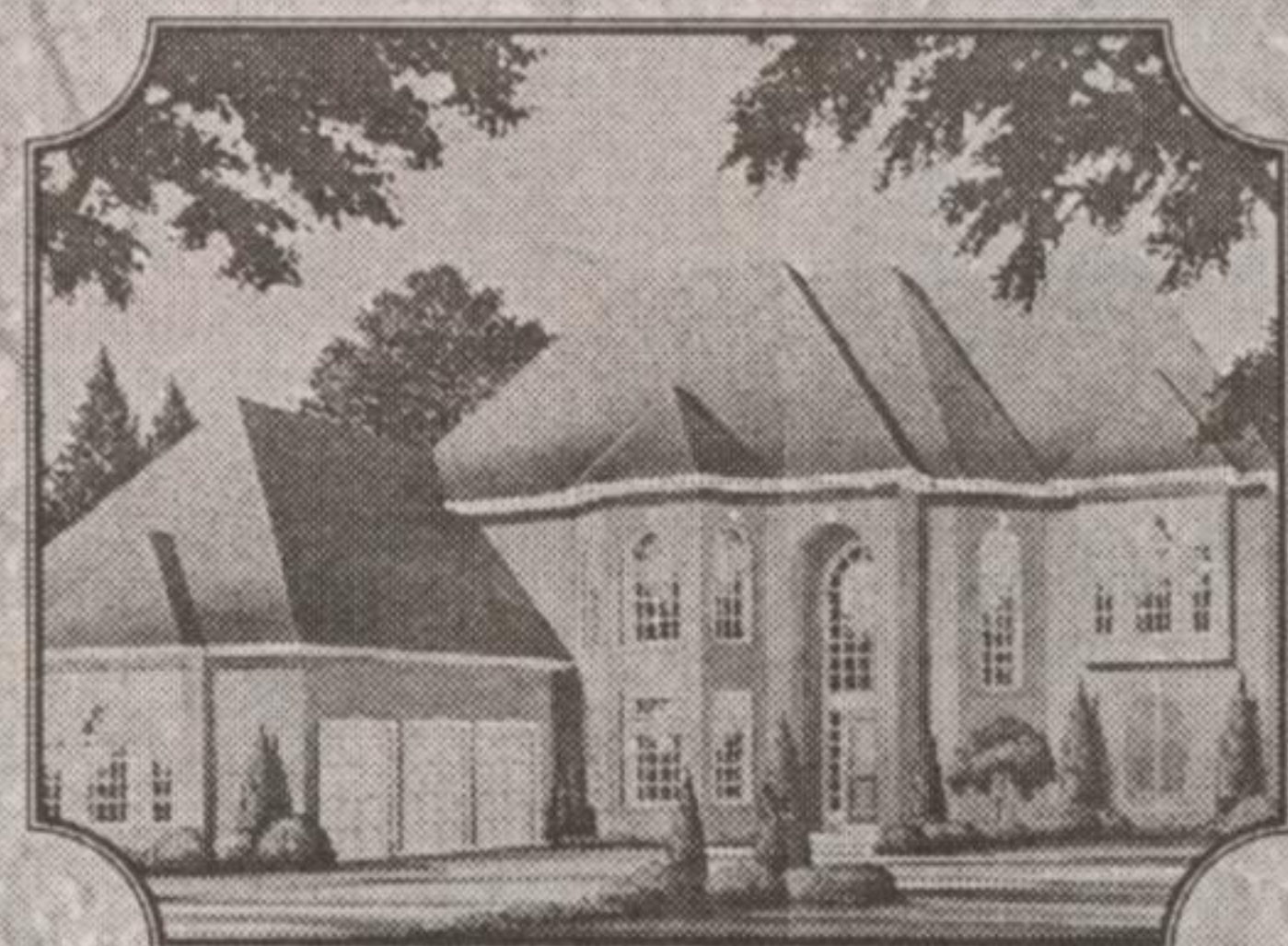
**60%
SOLD**



THE CHESAPEAKE
3025 sq. ft. **\$464,000**



THE DELAWARE
2559 sq. ft. **\$414,000**



THE ARLINGTON
3397 sq. ft. **\$489,000**



THE BRISTOL
2655 sq. ft. **\$429,000**



THE KINGSFORT
2620 sq. ft. **\$429,000**



THE NEWHAVEN
2860 sq. ft. **\$464,000**



GARY THOMAS
Associate Broker
Serving Milton
Since 1970

RE/MAX

**Blue Springs Realty
(Halton) Corp.**

878-7777

Model Home & Sales Office
Open Sat., Sun., Wed. 1:00-4:30

**6 NEW
HOME
DESIGNS**



Our New Homes section to reach 40,000 homes

With home-building at a fever pitch in the Halton Hills area, *The Independent & Free Press* is providing new home buyers, builders and developers with the area's most comprehensive information package.

New Homes, launched last month, will become a regular monthly feature reaching more than 40,000 homes not only in Acton and Georgetown but in surrounding rural areas such as Alton, Belfountain, Caledon Village, Inglewood, Grand Valley, Orton,

Cheltenham, Limehouse, Norval, Terra Cotta, Rockwood, Orangeville, Hornby, Eden Mills, Bolton and Caledon East.

The publication offers both readers and advertisers the best opportunity to keep in touch with the ever-changing new home market.

New Homes will boast features on new home builders and site maps to help you find what could be your dream home.

The next New Homes will be published Nov. 22. For more information or to book advertising space call Sue Spizziri at 873-0301.

*Roses are Red
Violets are Pink
Heather is 40
What do you think?*

*Love Mom & Dad
& all the family
K O X O X*

Long-Term Care Building Opportunity

The Ministry of Health and Long-Term Care is pleased to announce the final phase of the Ontario government's commitment to build 20,000 new long-term care beds through the 2001 Long-Term Care Bed Allocations

Under the new requirements, applicants must:

- own, have an option to buy or lease, or have a long-term lease on land
- demonstrate that they meet the Ministry's financial, development and operational requirements

Applicants are invited, but not required, to attend an application information session conducted by Ministry staff, held in

WATERLOO

Monday, November 20, 9:30 am - 12:30 pm
Waterloo Recreation Complex
101 Father David Bauer Drive

To receive a copy of the application package or for more information call toll free 1-888-720-1010 (416-314-0400 in Toronto) or visit our web site: www.gov.on.ca/health

New long-term care beds are available as follows:

Brant.....32 beds	Muskoka.....70 beds
Durham.....89 beds	Niagara.....102 beds
Essex.....137 beds	Ottawa/Carleton.....210 beds
Frontenac/Lennox/ Addington.....32 beds	Parry Sound.....109 beds
Haliburton/Northumberland/ Victoria.....159 beds	Peterborough.....76 beds
Halton.....387 beds	Simcoe.....100 beds
Hamilton/Wentworth.....270 beds	Sudbury/Manitoulin.....32 beds
Lambton.....32 beds	Toronto.....2,334 beds
Middlesex.....32 beds	Waterloo.....275 beds
	York.....278 beds

Staff will be available at all information sessions to answer questions in French. Submission of completed applications will be due by January 31, 2001 at 5:00 p.m. to the Ministry of Health and Long-Term Care, 415 Yonge Street, 10th Floor, Toronto, M5B 2E7.
Successful applicants will be identified in Spring 2001.
All applications will be assessed on the same basis.