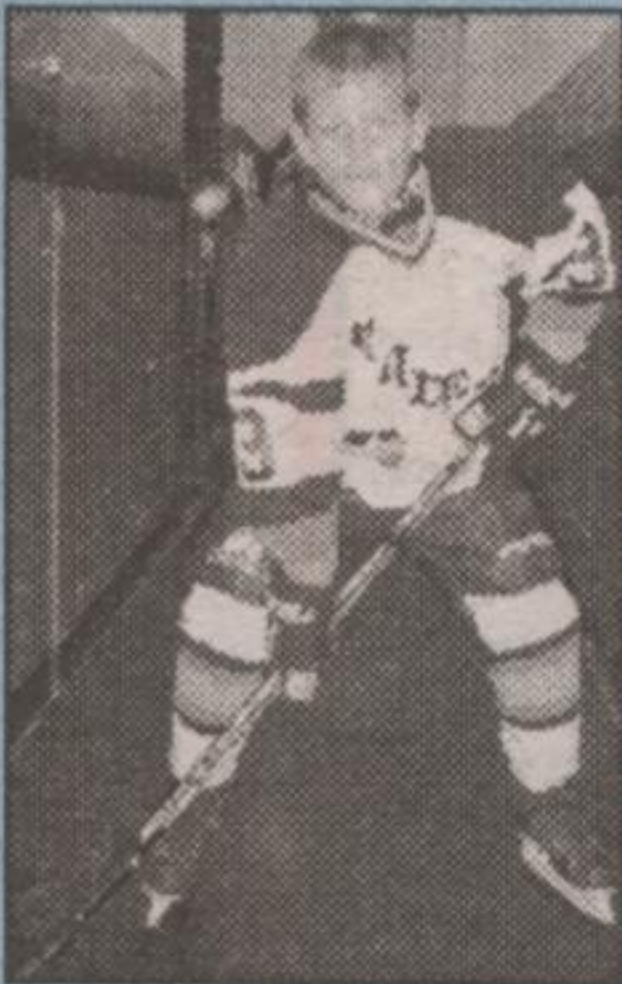




This year we are featuring the Georgetown Minor Novice Raiders. This group of 8 year olds are representing Georgetown in the Double "A" loop in the OMHA. There home games are every Tuesday at 6:30 p.m. at Memorial Arena. Why not come out and watch them play?

PLAYER PROFILE
NICO BRADLEY



No.3
Height: 4'4"
Weight: 75 lbs.
Position: Right Defence
Shoots: Right
Last Years Team: House League
Stuff He Likes: To Do: Take shots
When I Grow Up I Want To Be: Lawyer

RE/MAX

BLUE SPRINGS REALTY (Halton) CORP.

TORONTO (905) 874-3051

GEORGETOWN (905) 877-5211

ERIN (519) 833-7117

CHECK OUT THE INSIDE OF THESE HOMES THROUGH THE "REMAX VIRTUAL TOUR" BY SIMPLY GOING TO www.davekrause.com AND ENTERING YOUR PRICE RANGE!



NEW
EXECUTIVE HOME IN ERIN
This 2 storey 4 bdrm, open concept 3800 sq. ft. all brick 1 year new home overlooks the west branch of the Credit River and is beside the Caledon-Erin-Elora recreational trail. The house itself is gorgeous. As you enter the front door the foyer opens to the DR, office, FR & staircase to the bdrms. The MBR has a large sitting room with a gas FP. The FR has a wonderful brick gas FP & is a combination with a large kit. Priced at \$424,900. Call **Dave Krause*** to view.



NEW
POOL SIZE LOT
Looking for that newer home that has a lot big enough to put in a pool for those warm summer nights? This home meets that need. This open concept raised bungalow located close to parks, tennis courts & a junior public school features large country kitchen with w/o to a deck, full basement with large windows above grade. Double car garage, fenced yard, central air. Priced at \$226,900. Call **Dave Krause*** to view.



NEW PRICE
4 BEDROOM HOME IN MILTON
Gorgeous all brick home close to schools & park. Features include new kitchen addition, M/F laundry, M/R family room with fireplace. Ceramics in kitchen & hallway '98, broadloom '98, Series 800 doors throughout most of the house, C/A '99, roof '96. Good size lot, beautifully landscaped, walkout from family room to covered patio with skylight. Priced at \$269,000. Call **Dave Krause*** to view.

↑ N	15TH SDRD		8TH LINE
	Ashgrove	196 acre property	
	10TH SDRD		
	5TH SDRD		
	STEELES		
401			

196 ACRES GEORGETOWN SOUTH

This 196 acre property is adjacent to the Urban area of Georgetown as outlined in the Official Plan of Halton Hills. It is presently being used as a farm with a house & buildings. The property is located at the corner of 8th Line & 10 Sdrd with its borders being west of 8th line, north of 10 Sdrd and east of 7th Line (Trafalgar Rd.) at Ashgrove. Priced at 4.9 million. Call **Dave Krause*** to view.



10 ACRE HOBBY FARM
Tired of living in a big house on a small lot with no privacy and space. Why not live in a big house on a 10 acre parcel of land. This property is south of Georgetown and consists of the following: 1) Approximately 2000 sq. ft. all brick raised bungalow with a walkout basement that could accommodate the extended family and a double car garage. This home is finished top to bottom. 2) 10 stall horse barn with paddocks and a 1/3 mile track. 3) 800 apple trees with a cold storage set up. 4) Driving shed for the equipment. Priced at \$589,000. Call **Dave Krause*** to view.



PRICE CHANGE
BALLINAFAD BEAUTY
For only \$1500 per month p&t, you can own this lovely ranch home just 15 minutes from the Georgetown GO Station. Warm yourself by the cosy fire in the rec room, shoot pool in the games room, or hide out in the barn doing the hobbies you love to do. The kids will want to flood the huge backyard for skating, and then, next summer, you can put in that pool you've always wanted. Priced at \$255,000. Call **Dave Krause*** to view.



GREAT PRICE GREAT LOCATION
This all brick ranch style 2 storey home is located approximately 200 yds west of Mississauga Rd. on The Grange Sdrd in Caledon. Features of this open concept home that sits on over 1 acre includes: large country kit, overlooking the backyard, a woodburning FP accents the liv. & din. rms, main floor family room. Recently renovated sun room with lots of windows overlooks over the back of the property. 3 pc. ensuite off master bdrm, double car garage, loads of parking. Priced at \$305,900. Call **Dave Krause*** to view.

When you're selling your home, time is of the essence.
Why wait?
Call me for a FREE market evaluation.
Do you have any questions regarding listing your home?
I can help!
Call DAVE KRAUSE

877-5211

Another service for my clients:
Visit us at our WEBSITE www.davekrause.com
E-MAIL us at: davekrause@aztec-net.com



I can also save you time and money by arranging all your financing needs! Call me today to discuss your mortgage requirements.
Not intended to solicit any properties already listed.

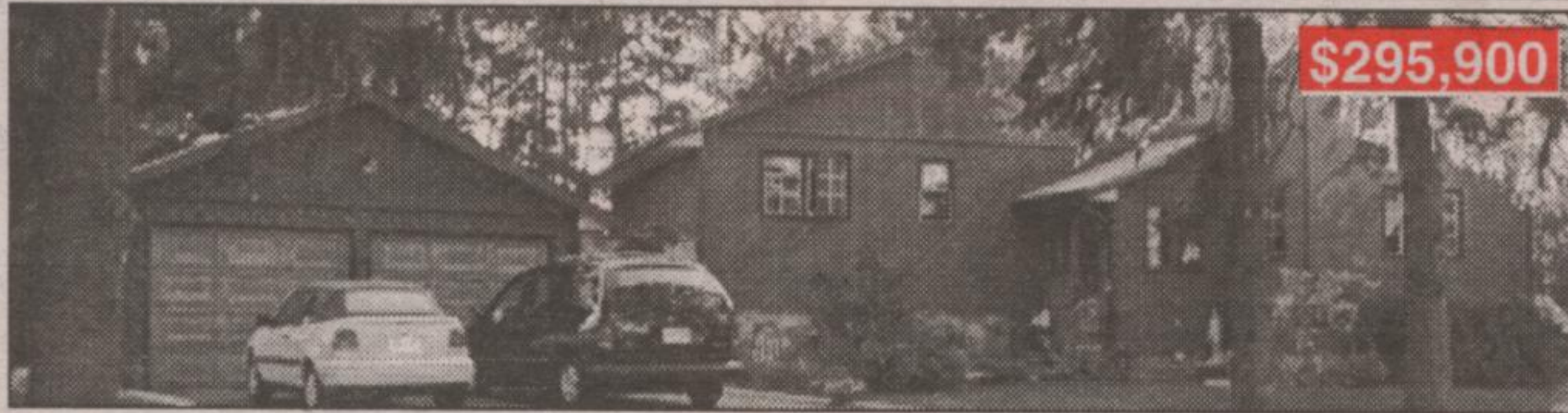


Rychard McKeown
Sales Associate

RE/MAX BLUE SPRINGS REALTY (Halton) CORP.
(905) 877-5211 (905) 874-3051

rychard@aztec-net.com

Receive my free booklets, "Selling Your Home For All It's Worth" and buyers "First Aid" kit.



EVERTON

Fireplaces (gas) in both LR w/redwood cathedral ceilings & beautiful walkout lower family room. This is an ideal place to raise a family...or have your inlaws with large upper kitchen (new cupboards & HW floor) & lower summer kitchen; 3+1 bdrms, 2 WR, inground swimming pool surrounded by wrought iron fence, detached double car garage, tall evergreens.



LIMEHOUSE

A gorgeous raised bungalow close to town w/attached double car garage. 3 br up & 2 down, featuring large ceramic tiled central foyer leading to 2 levels & 'Canada' sunroom w/hot tub & woodburning stove; upper level has large eat-in kit & formal DR & LR w/gas FP; lower level has 2nd kit & bathroom for inlaws with lg LR w/FP. Above ground pool & workshop/studio complete the picture!

EXPOSE YOUR HOME ON THE NET.
www.rychardmckeown.com
CALL NOW!!

RE/MAX BLUE SPRINGS REALTY (Halton) CORP.

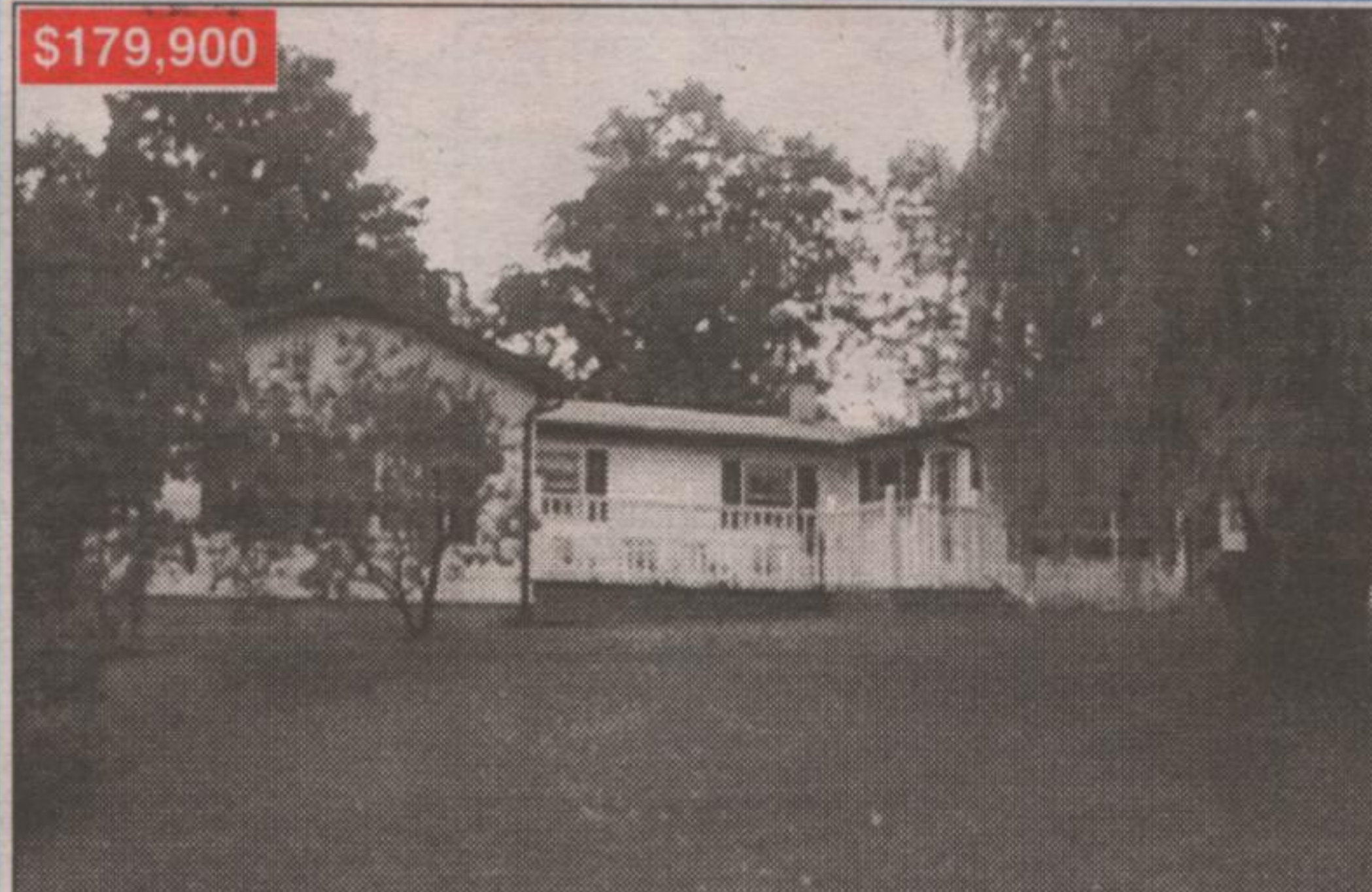
360 Guelph Street, Georgetown

NORINNE KILGOUR
Sales Representative

RE/MAX HALL of FAME Member



877-5211
Erin (519)
833-7117



\$179,900

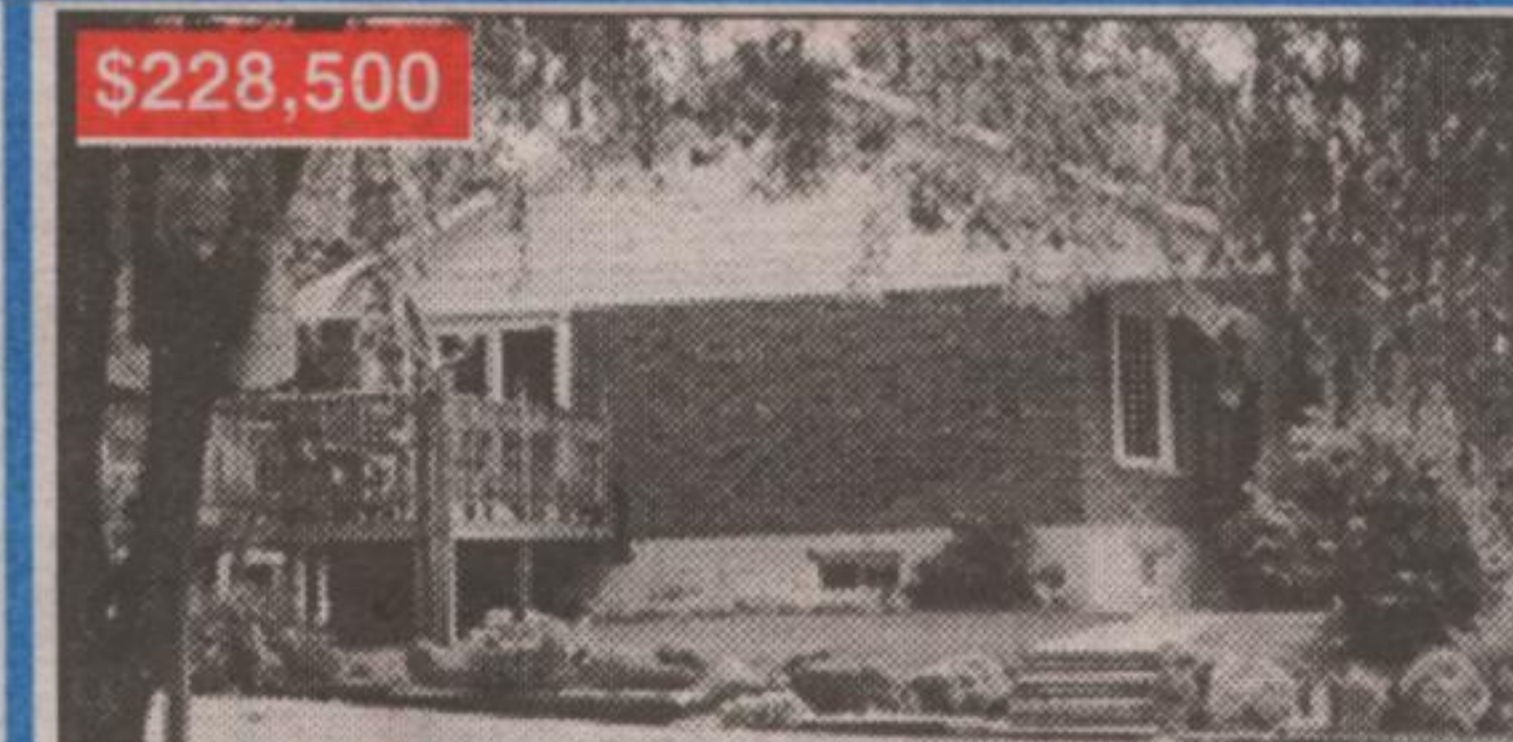
TRUCKERS NEEDED \$179,900

This 3 bedroom bungalow on over 3/4 acre near Hillsburgh has spacious rooms and main floor laundry. There is a large deck both front and back. Home could be made wheelchair accessible. Call for an appointment today. MLS #X34691



QUICK CLOSING \$199,000

IMMACULATE BRICK BUNGALOW
Don't miss this one, you won't be disappointed. Located in Erin Village and walking distance to all amenities. Large yard, double paved drive. The rec room is huge, done in knotty pine. Perfect for entertaining. Exceptionally well maintained home.
MLS#X35535



\$228,500

4 BEDROOM RANCH BUNGALOW

Country setting, open concept living area, newer kitchen leads to 12 x 15' deck. The home has been recently decorated. The lower level has large rec room, games room and 5th bedroom, suitable for in-law suite or the growing family. To add to the attraction is a 6.24% mortgage until 2009. Call now for more information. MLS#X34682