

NO
DOWN PAYMENT

NO
PAYMENTS
FOR 90 DAYS

NO
INTEREST
FOR 90 DAYS
(GENERAL MOTORS PAYS THE INTEREST)

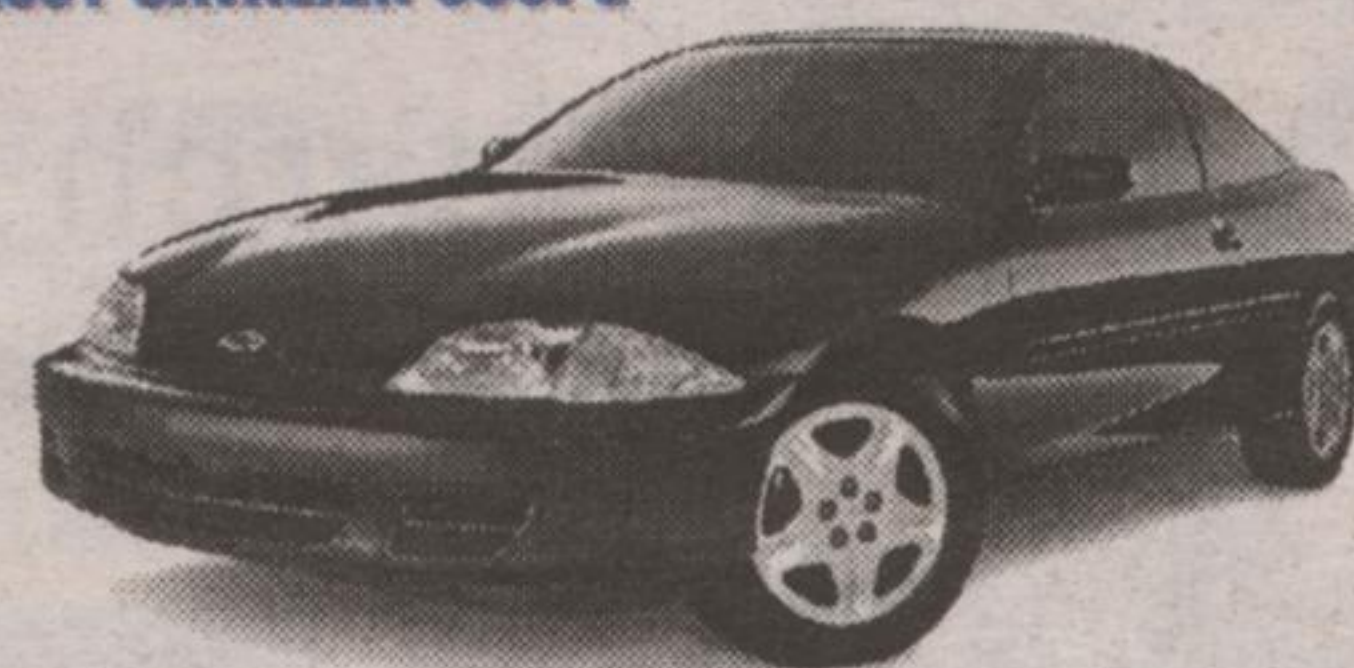
ON PURCHASE FINANCING UP TO 48 MONTHS

\$195

SMARTLEASE
PER MONTH/48 MONTHS
\$1,240 DOWN PAYMENT.
\$730 FREIGHT AND \$300
SECURITY DEPOSIT REQUIRED

OR
PURCHASE FINANCING
1.9%
UP TO 48 MONTHS

2001 CAVALIER COUPE



Remote Keyless Entry • Power Door Locks • CD Stereo
• Theft-Deterrent System • Anti-Lock Braking System
• 5-Speed Getrag Transmission

CAVALIER SEDAN V6 PURCHASE PRICE STARTING FROM \$14,198*

\$268

SMARTLEASE
PER MONTH/36 MONTHS
\$2,570 DOWN PAYMENT.
\$770 FREIGHT AND \$325
SECURITY DEPOSIT REQUIRED

OR
CASH PURCHASE
\$19,998*
EXCLUDES FREIGHT OF \$770

**2001 ALERO GX
BY OLDSMOBILE**



4-Speed Automatic Transmission with Enhanced Traction System
• 4-Wheel Disc Brakes with Anti-Lock Braking System • 4-Wheel
Independent Suspension • 2.4 Litre Twin Cam 150 HP Engine
• Air Conditioning • 70/30 Split-Folding Rear Seat • Cruise
Control/Tilt-Wheel Steering • AM/FM Stereo CD • Power Door
Locks • PASSLock Theft-Deterrent System • And Much More

\$288

SMARTLEASE
PER MONTH/36 MONTHS
\$2,600 DOWN PAYMENT.
\$770 FREIGHT AND \$350
SECURITY DEPOSIT REQUIRED

OR
CASH PURCHASE
\$20,998*
EXCLUDES FREIGHT OF \$770

2001 MALIBU



3.1 Litre V6 170 HP Engine • 4-Speed Automatic Transmission
• Air Conditioning • 60/40 Split-Folding Rear Seats • 4-Wheel
Anti-Lock Braking System • AM/FM Stereo CD • Power Door
Locks • Cruise Control/Tilt-Wheel Steering • Theft-Deterrent
System • And More

\$258

SMARTLEASE
PER MONTH/36 MONTHS
\$3,775 DOWN PAYMENT.
\$940 FREIGHT AND \$300
SECURITY DEPOSIT REQUIRED

OR
PURCHASE FINANCING
2.9%
UP TO 48 MONTHS

2001 CHEVROLET VENTURE VALUE VAN



3.4 Litre V6 185 HP Engine • 4-Speed Automatic Transmission
• 4-Wheel Anti-Lock Braking System • Air Conditioning • Standard
Integral Child Seat • Tilt-Wheel/Power Door Locks • AM/FM
Stereo CD

LEASE RATE
1.9%
UP TO 36 MONTHS

OR
CASH PURCHASE
\$29,998*
EXCLUDES FREIGHT OF \$810

2001 CHEVY BLAZER 2-DOOR



Vortec 4300 V6 190 HP Engine • 4-Speed Automatic Transmission
• Air Conditioning • Power Door Locks/Windows/Mirrors • 4-Wheel
ABS • Tilt-Wheel & Cruise Control • Touring Suspension

\$388

SMARTLEASE
PER MONTH/36 MONTHS
\$3,650 DOWN PAYMENT.
\$990 FREIGHT AND \$450
SECURITY DEPOSIT REQUIRED

2001 CHEVY SILVERADO EXTENDED CAB



270 HP Vortec 4800 V8 Engine • 4-Speed Automatic Transmission with Overdrive • Air
Conditioning with Interior Air Filtration System • 4-Wheel Disc & 4-Wheel Anti-Lock Braking
System • 40/20/40 Split Front Seat with Custom Cloth Trim • Full Instrumentation
Including: Tachometer, Engine Hour Meter & Driver Message Centre

PLUS, IMPALA, INTRIGUE, AURORA, SILHOUETTE, ASTRO, TRACKER, S-10, MONTE CARLO, CAMARO, TAHOE AND SUBURBAN! ALSO AVAILABLE ON 2000 MODELS IN DEALER STOCK.*

LIMITED TIME ONLY. HURRY IN AND DRIVE HOME A WINNER.

For the latest information, visit us at gmcanada.com, drop by your local Chevrolet • Oldsmobile dealer or call us at 1-800-GM-DRIVE.

*Offer available on GMAC Purchase Financing contracts with terms up to 48 months only. Offer does not apply to: 2000/2001 Corvette and 2001 New-Style CK 2500/3500 Pickups & Chassis Cabs. Based on a 1.9%/3.9%/3.9%/2.9%/8.4% (Cavalier Coupe R7Z/Alero GX Sedan R7Z/Malibu R7Z/Venture Value Van R7Z/Silverado Ext. Cab R7L) annual lease rate. 48/36/36/36/36 month term. \$0.12/km charge over 80,000/60,000 km for 48/36 months. Option to purchase at lease end is \$6,929/\$10,732/\$11,054/\$12,872/\$16,642 (Cavalier Coupe R7Z/Alero GX Sedan R7Z/Malibu R7Z/Venture Value Van R7Z/Silverado Ext. Cab R7L) plus applicable taxes. Licence, insurance, PPSA, administration fees and taxes not included. Other lease options available. Financing on approved GMAC credit only. Example: \$10,000 at 1.9%/2.9% APR, the monthly payment is \$216.52/\$220.90 for 48/48 months. Cost of borrowing is \$382.96/\$603.20. Total obligation is \$10,392.96/\$10,603.20. Down payment and/or trade may be required. Monthly payment and cost of borrowing will vary depending on amount borrowed and down payment/trade. The SMARTLEASE monthly payment and the GMAC purchase finance rate are not available with and are not calculated on the "Cash Purchase" price as shown. The difference between the price for the SMARTLEASE/GMAC Purchase Finance offer and the "Cash Purchase" offer is deemed under provincial disclosure laws to be a cost of borrowing, whether or not the same represents actual interest and is required to be expressed as an annual percentage rate of 6.95%/6.85%/6.56% (Alero GX Sedan R7Z/Malibu R7Z/Blazer 2-Door R7A). Offer applies to new or demonstrator 2001 models of Cavalier Coupe R7Z/Alero GX Sedan R7Z/Malibu R7Z/Venture Value Van R7Z/Blazer 2-Door R7A/Silverado Ext. Cab R7L equipped as described. Offers apply to qualified retail customers in the Ontario Chevrolet Oldsmobile Dealer Marketing Association area only (excluding Northwestern Ontario). Dealer trade may be necessary. Limited time offer which may not be combined with other offers. Lease and purchase offers do not include freight (as indicated), licence, insurance and taxes. Dealers are free to set individual prices. See your dealer for conditions or details. *Excludes freight of \$730.



CHEVROLET
Oldsmobile

