

New Homes section to reach 40,000 homes

With home-building at a fever pitch in the Halton Hills area, *The Independent & Free Press* is providing new home buyers, builders and developers with the area's most comprehensive information package.

New Homes, launched last month, will become a regular monthly feature reaching more than 40,000 homes not only in Acton and Georgetown but in surrounding rural areas such as Alton, Belfountain, Caledon Village, Inglewood, Grand Valley, Orton, Cheltenham, Limehouse,

NEW HOMES BUYERS GUIDE

The Independent & Free Press

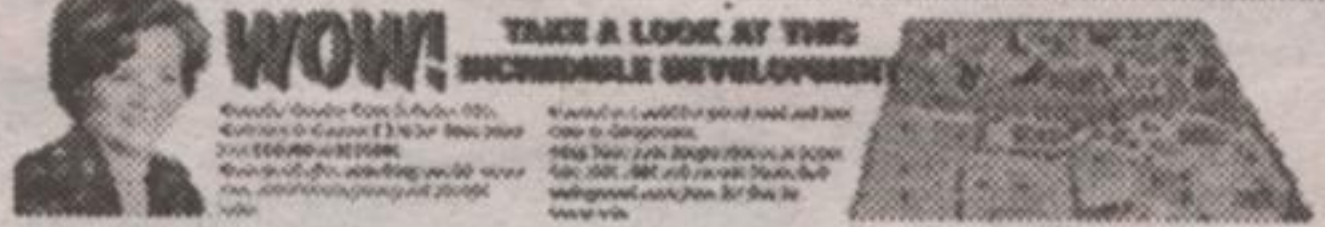
NEW HOMES

October 2000

Beech Brooke Country Estates

One Family's Dream

For the 10th time, the publication offers a comprehensive guide to the area's new home market. This month's feature highlights the Beech Brooke Country Estates, a premier residential development in the heart of the Halton Hills area. The development offers a variety of home styles, from traditional to modern, and is set in a beautiful, wooded setting. The homes are built by some of the area's most respected builders and offer a wide range of features and finishes. The publication provides detailed information on the homes, including floor plans, photos, and contact information for the builders. It also includes information on the local market and the benefits of buying a new home.



Norval, Terra Cotta, Rockwood, Orangeville, Hornby, Eden Mills, Bolton and Caledon East.

The publication offers both readers and advertisers the best opportunity to keep in touch with the ever-changing new home market.

New Homes will boast features on new home builders and site maps to help you find what could be your dream home.

The next New Homes will be published Nov. 22. For more information or to book advertising space call Sue Spizziri at 873-0301.

THANK YOU!

Ward 4 Voters

- The Sign Shoppe
- Halton Commercial Printers
- Elaine and her volunteers

Ron Chatten

FUTURE SHOP

CORRECTION NOTICE

In our November 8-21, 2000 flyer, the following error occurred:

- On page 34, the Sony PlayStation 2 ad should read "Limited quantities available, one per customer, no dealers, no rainchecks."
- On page 46 the Panasonic Deluxe Full Size Sensor Microwave NNS960W ad should read "\$279.99 Save \$20.00", not \$229.99.
- On page 48 the Hoover Bagless Wind Tunnel Upright Vacuum U5720 does not have a "Dirt Sensor".

In our November 9 - December 3, 2000 music flyer, the following error occurred:

- On page 20 the Sony PlayStation 2 ad should read "One per customer, limited quantities, no dealers, no rainchecks."

We sincerely apologize for any inconvenience this may have caused our valued customers.

Tooth Chatter



by
**ALEX
TRENTON
DENTURIST**

IMMEDIATE DENTURES

An "Immediate Denture" is a denture that is inserted immediately following the extraction of the natural teeth.

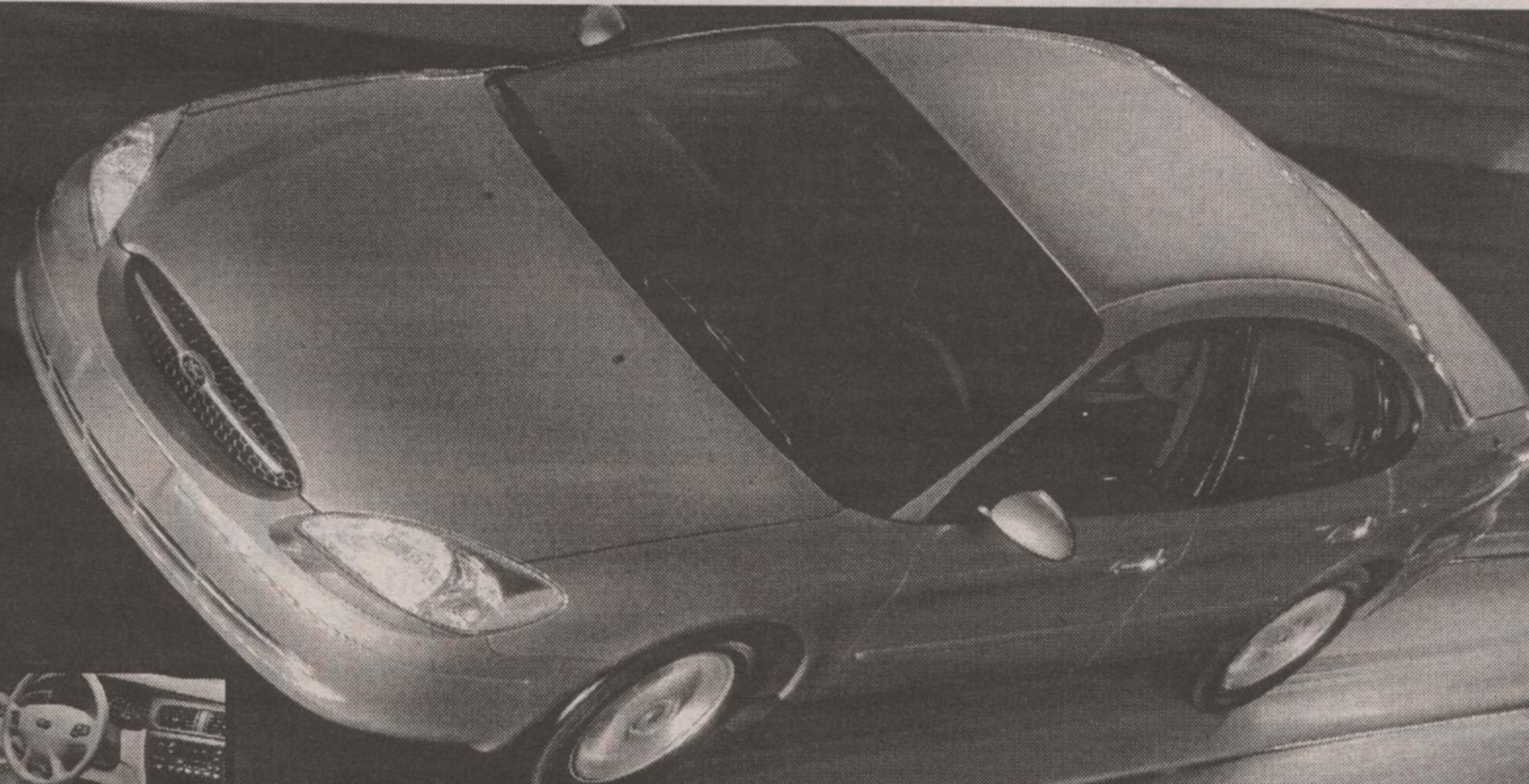
Using this method, the denture actually acts as a sort of bandage to help the tissues heal. The denture must be left in place during the first 24 hours. You must follow normal post extraction recommendations, from your doctor and them come in for an adjustment/check-up appointment the following day. Another advantage, is that the patient gets their denture right away and doesn't have the inconvenience or embarrassment of having to go without teeth. Immediate dentures are very popular, however this route is not ideal for everyone. It often involves an extensive period of adjustment in which the patient and Denturist must work closely together for some time for best results.

If you have never worn dentures, your new teeth will probably feel strange and bulky in your mouth. This is because the muscles of your face, lip, cheeks, and tongue are used to your former teeth, or to nothing at all. These muscles are being stretched and molded to new contours and dimensions. This muscle tension will subside in a short period of time. Also, learning to chew properly with new dentures may take two to six weeks. It is also important that the person who extracts your teeth, does not have to be the person who makes your denture. Denturist are "denture specialists" who work together with other dental professionals, to make sure you get the best denture care available. You do not need a referral; simply call our office direct.

Creating confident smiles since 1982.

Alexander Trenton, D.D., F.C.A.D. (A)
Denturist
Georgetown Denture Clinic,
18 Church Street,
Georgetown, Ontario
(905) 877-2359
(Across from the Library and Cultural Centre)

the new 2001 taurus se



★★★★★ The Taurus has earned five stars - the highest possible U.S. government crash test rating - for front impact for both driver and front passenger - three years in a row.*

safety is only one of the surprises

The 2001 Ford Taurus SE has a unique **standard personal safety system** with special sensors that determine how much energy is needed to deploy air bags, depending on the severity of the accident. There are, as well, safety belt usage sensors, and driver's seat position sensors, so both driver and passenger get the protection they deserve.

- 3.0L OHV V6 engine • Electronic 4-speed automatic with overdrive • 6-way power driver's seat with lumbar support • 16" aluminum 5-spoke wheels • SecurLock™ Anti-theft system • 4-wheel ABS
- Air conditioning • Rear child seat tethers

\$299*

per month/36 month lease
\$4,995 Down Payment plus \$350 Security Deposit and \$890 Freight

WE HAVE THE RIGHT LEASE PAYMENT FOR YOU

2001 TAURUS SE

Based on 3.9% annual interest rate over 36 months

Monthly Payment	Down Payment or Equivalent Trade	Security Deposit	Freight	Due on Signing
\$299	\$4,995	\$350	\$890	\$6,534
\$373	\$2,495	\$450	\$890	\$4,208
\$446	\$0	\$525	\$890	\$1,861

First Month's Payment Required. 8 cents/km charge over 60,000km for 36 months. \$11,465.95. Optional Buyback. Applicable Taxes, Licence, Insurance and Administration Fees Extra.



expect more



YOUR ONTARIO

FORD DEALERS.

www.ford.ca/offers

WISE BUYERS READ THE LEGAL COPY: *Lease a new 2001 Taurus SE for \$299/\$373/\$446 per month with \$4,995/\$2,495/\$0 down payment or equivalent trade based on an annual lease rate of 3.9% and a 36 month lease from Ford Credit to qualified lessees, on approved credit. Total lease obligation is \$15,759/\$15,923/\$16,056. Some conditions and a mileage restriction of 60,000km over 36 months apply. A charge of 8 cents per km over mileage restriction applies, plus applicable taxes. First month's payment and \$350/\$450/\$525 security deposit required. Offer excludes freight (\$890), licence, insurance, administration fees and all applicable taxes. Dealer may lease for less. Limited time offer. Offer may be cancelled at any time without notice. See Dealer for details. *The highest front impact rating for both driver and front passenger in U.S. government National Highway Traffic Safety Administration testing (www.nhtsa.com). Ontario FDA, P.O. Box 2000, Oakville, Ontario L6J 5E4