



STARTING OUT?
Why not start here. Spacious and upgraded 2 bedroom home with lots of charm and character in a quiet mature neighbourhood - walking distance to 'GO'. **Martha Summers***. STO-00

MARTHA SUMMERS*

Toronto/Local
877-5165
(905) 874-3040 (Miss.)
(519) 833-9714 (Erin)

www.realtor.com/toronto/msummers
247 Guelph St., Georgetown
E-mail: msummers@idirect.com

JA PRESIDENTS CIRCLE
Johnson Associates HALTON LTD., REALTOR
JA PERFORMANCE GROUP

Sales Rep.
President's Circle Award Winner consecutively since 1988
Performance Group Member consecutively since 1993

MARTHA SUMMERS = PROVEN PERFORMER



PERFECTION ON 5 COUNTRY ACRES \$499,000
You won't believe what this home offers!! 4 years young, mature landscaping, pond, pool, Florida room with hot tub, skylights, open concept, hardwood, ceramics and more. This home was built with quality throughout. Words cannot describe just how special this home is. Fabulous!! **Martha Summers***. ARS-00



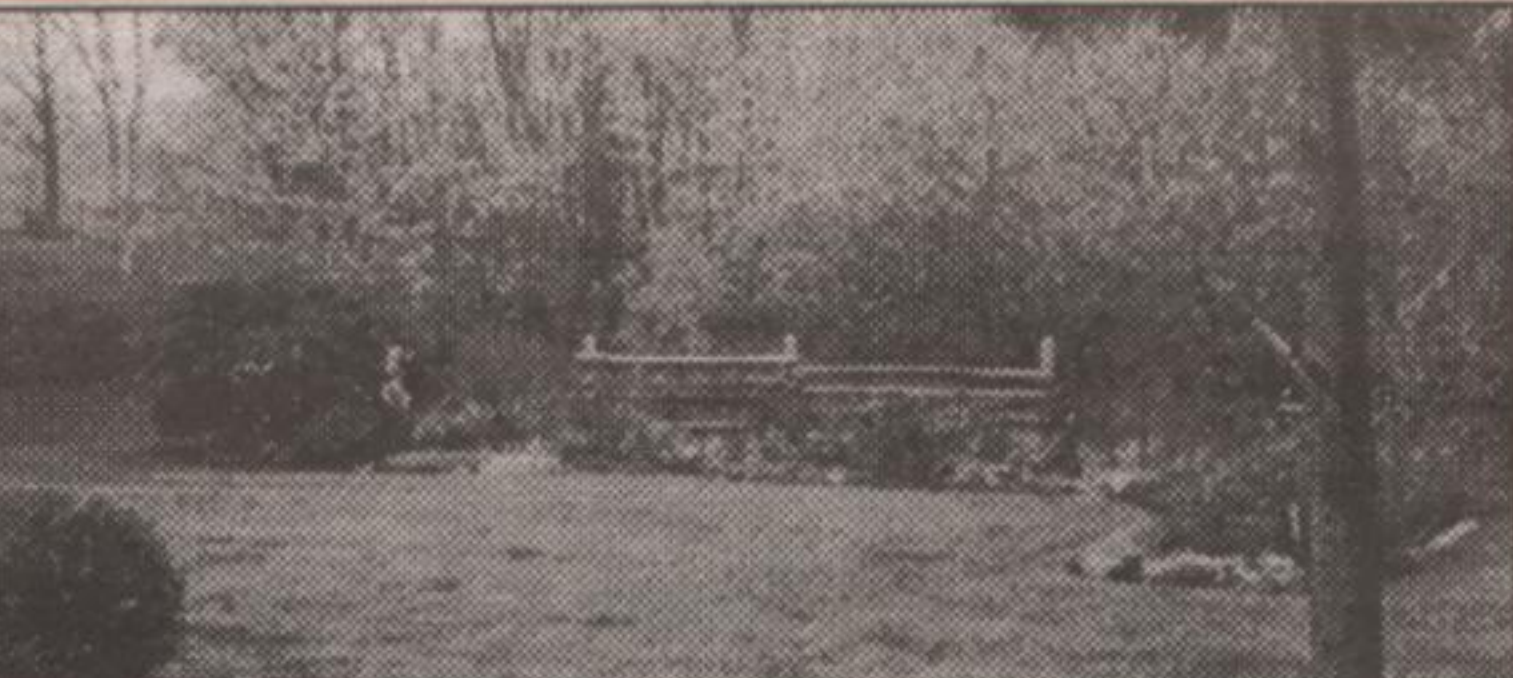
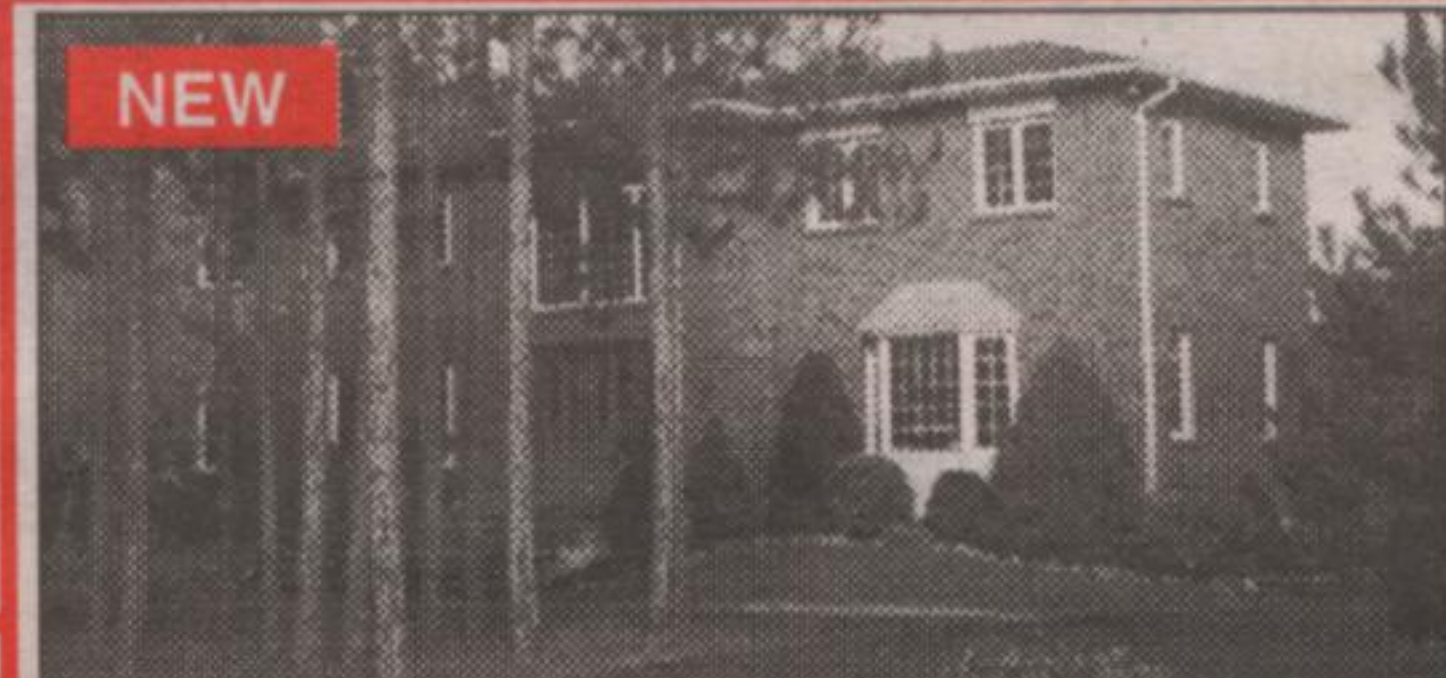
CUSTOM QUALITY THROUGHOUT \$575,000
Look no further. Custom quality stone on 2 private acres complete with basketball court and small pond. Main floor master with ensuite and walkout to courtyard. Gourmet kitchen with 2 storey solarium windows with views of yard. Family room with stone fireplace and wet bar. Only 15 min to 401. **Martha Summers***. ENR-00



"BRIMSTONE" CENTURY CHARM \$329,000
in the quaint village of Brimstone with the Forks of the Credit river running nearby, this century home filled with charm sits well back from the road surrounded by fabulous gardens and hardwoods in behind. Living rm w/beamed ceilings, hwd. floors, sep. dining room. 4 season sunroom w/walkout to gardens, sep. 2 car garage. Close to Caledon Ski Club. **Martha Summers***. BUT-00



FARM LIVING IS THE LIFE! 99 ACRES - \$475,000
Two generations have enjoyed and maintained this charming Victorian set in a park like setting on a paved road 1 hr. N>W> of Toronto. Upgraded kitchen, bathrooms and family room create a great atmosphere to raise your family. Large bank barn with good height for horses, cropped lands, walking trails thru the woods and a small pond. You won't be disappointed. **Martha Summers***. McK-00

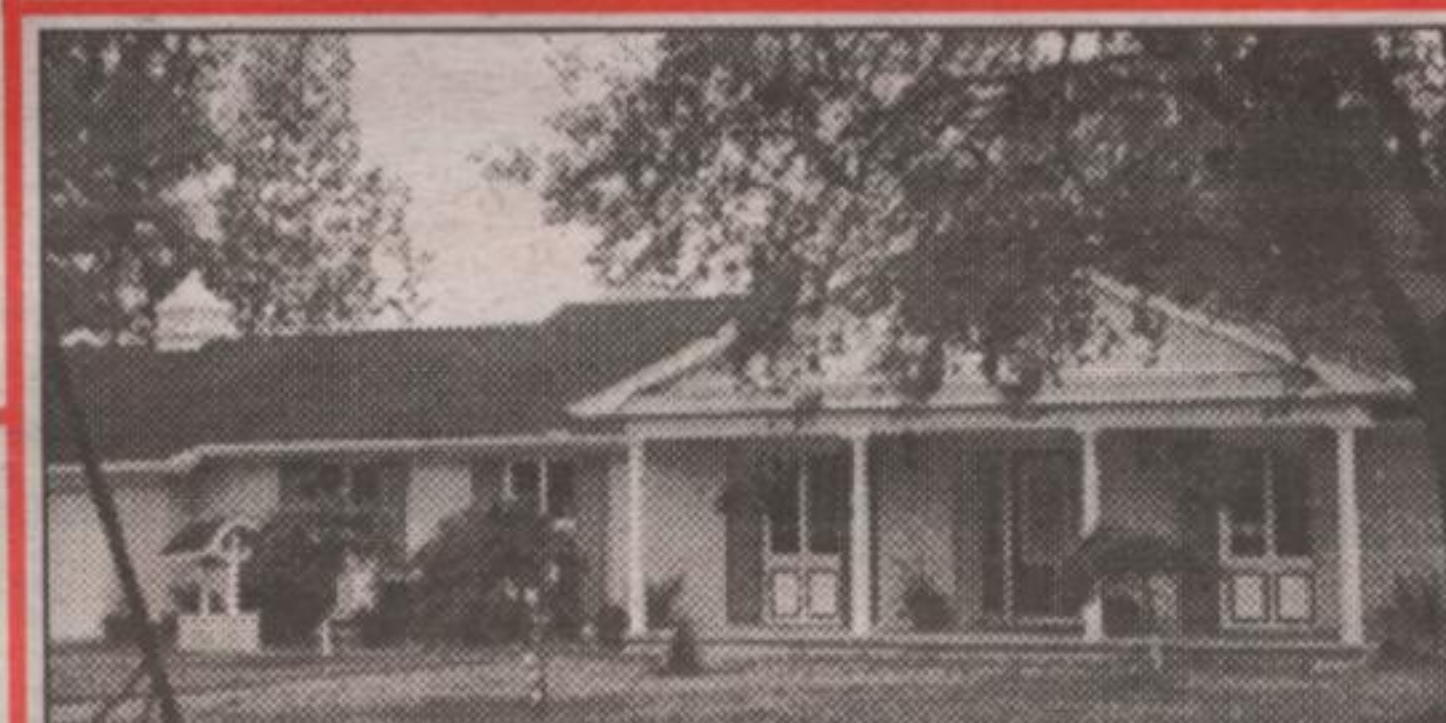


DÉSIRABLE ESTATE SUBDIVISION - 1.3 ACRE MATURE LOT - \$469,000
Fabulous 4+ bdrm executive of approx. 4200 sq. ft. on a treed lot on a quiet street in a mature area. Recent hardwood, huge oak country kitchen with walkout to private deck overlooking extensive gardens. Main level office and fam rm. Full finished lower level at walkout with 2nd kitchen, 2 bdrms, rec room with fireplace and full bath. Great for the in-laws! **Martha Summers***. SJA-00



EXECUTIVE EXPECTATIONS IN THE COUNTRY

Gleaming hardwood floors, dream kitchen, sunroom overlooking pool and gardens. Formal living room and dining room, finished lower level, attached garage with room for 4 cars and much more!! Custom quality throughout. \$539,000. **Martha Summers***. BOS-00



OPPORTUNITY KNOCKS!! - DESIRABLE TERRA COTTA
Fabulous 15 acre country property with pool, pond, paddocks, 5 stall barn and 2 significantly upgraded bungalows joined by a double garage. Bring your parents, sister, brother the possibilities are endless \$649,000. **Martha Summers***. DEG-00



ABSOLUTE PRIVACY - LOG HOME IN THE COUNTRY - 48 ACRES
Wind down the treed driveway to this wonderful setting on which is situated in a bedroom log home with character and perfection. Watch the sunsets, watch your animals in the fields, watch the wildlife on the pond. Loafing barn with 2 stalls. Very Special at \$549,000! **Martha Summers***. DEV-00



QUALITY BUILDER - EXECUTIVE LOT - 10 MIN TO 'GO'
Build your dream on the private wooded 1.4 acres located close to town but with country around. Your choice of style but it can be done for \$325,000 to \$350,000 with lots of quality and charm. Call for details - the builder has an excellent reputation and these lots are hard to find!! **Martha Summers***.



10 MINUTES TO 401 - CHARM IN THE COUNTRY
Wind through the maples to your charming 4 bedroom home with main floor master with full ensuite. Great views from the eat-in kitchen. Super main floor family room with fireplace and beamed ceiling. Lovely gardens, fenced dog run, 2+ car garage and more! \$405,000. **Martha Summers***. MIT-00



80 STEVENS CRES., GEORGETOWN



1463 FORKS OF CREDIT, BELFOUNTAIN



5083 WELLINGTON ROAD 125, ERIN



11 HILLTOP ROAD, HILLSBURGH



5674 2ND LINE, ERIN



5690 SIXTH LINE, ERIN

AVAILABLE LAND - Martha Summers*

Halton - Build your dream home, 1.4 acres treed - \$149,900 **2 Plus Acres** - Caledon location near conservation & stream. \$54,900.
Belfountain South is just a great location to own 132 acres of rolling, forested and open land. A great investment at \$350,000.

"MARTHA SUMMERS = PROVEN PERFORMANCE"