



## PARK'S "STRESS FREE" PURCHASE PLAN INCLUDES:

- 6 MONTH/ 10,000 KM GLOBAL POWERTRAIN WARRANTY
- 6 MONTH ROADSIDE ASSISTANCE
- 30 DAY/ 2500 KM. EXCHANGE POLICY ON YOUR PURCHASE
- ONTARIO DRIVE CLEAN CERTIFIED
- FREE 1ST LUBE, OIL & FILTER INCLUDING 10 POINT INSPECTION
- GUARANTEED NO MAJOR COLLISION DAMAGE
- BANK FINANCING & LEASING ON SITE
- EXTENDED WARRANTY AVAILABLE
- FULLY EQUIPPED SERVICE DEPARTMENT
- COMPETITIVE PRICING REVIEWED WEEKLY
- ALL PRICING INFORMATION CLEARLY SHOWN ON VEHICLES AND IN OUR ADVERTISING

FEATURE



### 1996 BMW Z3 ROADSTER

Never Winter Driven!

Only 33,000 km. Loaded!  
P9179

**\$33,988.**  
\$827<sup>77</sup> mo.

VEHICLE



#### 1997 INTREPID

Red, V6, Auto, Air, Cruise, Tilt, PWL, AM/FM/Cass., 72,800 kms  
Stk. #P9219

**\$298<sup>15</sup> mo.**  
**\$11,988**



#### 1997 SATURN SW1

Red, 4 cyl., Auto, Air, Cruise, Tilt, AM/FM/Cass., PL, 86,651 kms  
Stk. #P9211

**\$269<sup>00</sup> mo.**  
**\$10,788**



#### 1997 SUNFIRE SE

Red, 4 cyl., Auto, Air, Cruise, AM/FM/CD, 60,077 kms  
Stk. #P9238

**\$273<sup>88</sup> mo.**  
**\$10,988**



#### 1998 CENTURY CUSTOM

Green, V6, Auto, Air, PWL, Cruise, Tilt, AM/FM/Cass. 41,969 kms  
Stk. #P9195

**\$345<sup>33</sup> mo.**  
**\$13,988**



#### 1998 CONTOUR SE

Green, V6, Auto, Air, Cruise, Tilt, PWLM, ABS, AM/FM/Cass., 63,916 kms  
Stk. #P9202

**\$321<sup>69</sup> mo.**  
**\$12,988**



#### 1998 CROWN VICTORIA LX

Blue, 8 cyl., Auto, Air, PWLS, Cruise, Tilt, AM/FM/Cass. 49,333 kms  
Stk. #P9282

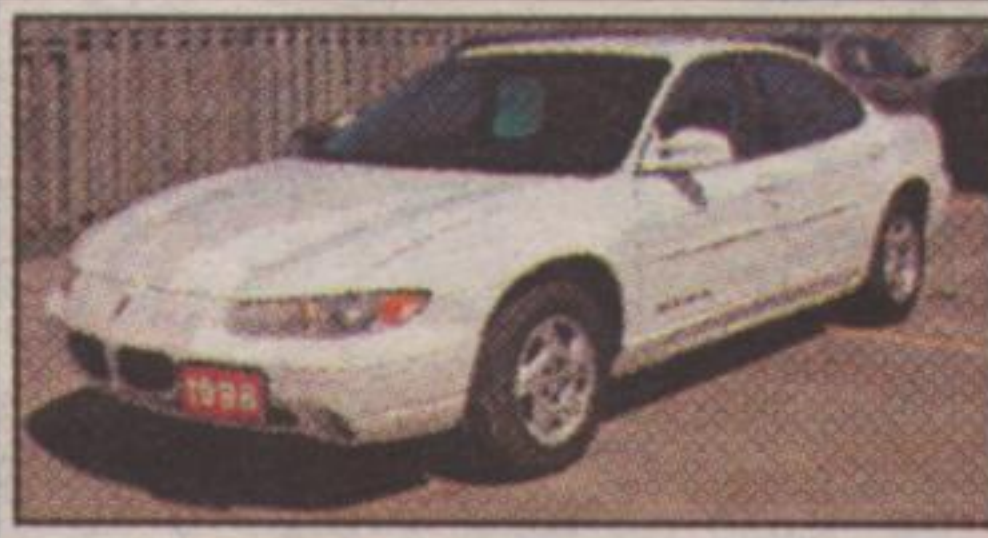
**\$491<sup>35</sup> mo.**  
**\$19,988**



#### 1998 ESCORT ZX2

White, 4 cyl., Auto, Air, AM/FM/Cass., 49,333 kms  
Stk. #P9055

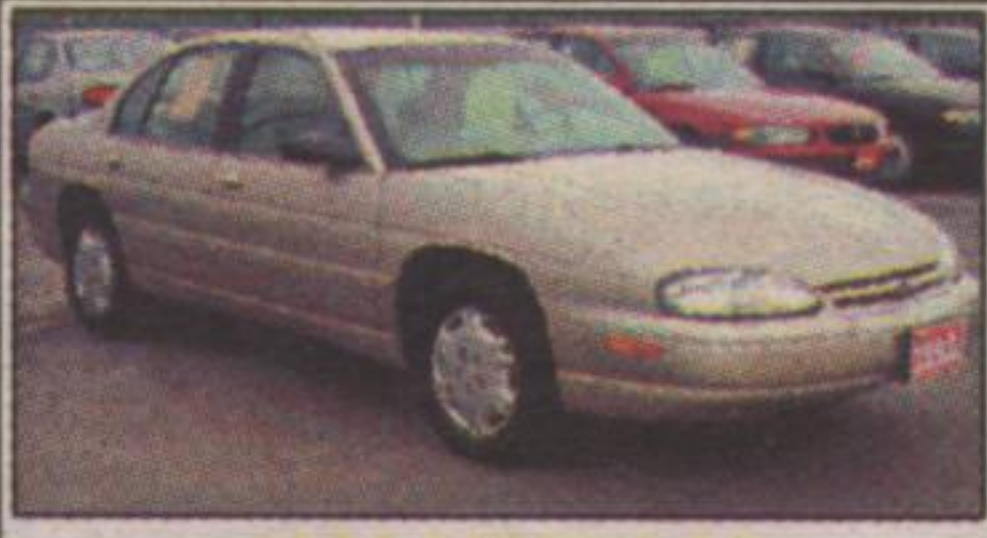
**\$298<sup>15</sup> mo.**  
**\$11,988**



#### 1998 GRAND PRIX SE

White, V6, Auto, Air, ABS, PWL, Cruise, Tilt, AM/FM/Cass. 49,333 kms  
Stk. #P9178

**\$315<sup>16</sup> mo.**  
**\$12,688**



#### 1998 LUMINA LS

Gold, V6, Auto, Air, ABS, PWLM, Cruise, Tilt, AM/FM/Cass. 41,969 kms  
Stk. #P9256

**\$321<sup>69</sup> mo.**  
**\$12,988**



#### 1998 SABLE GS

White, 6 cyl., Auto, Air, PW Seat, Tilt, AM/FM/Cass., 41,969 kms  
Stk. #P9044

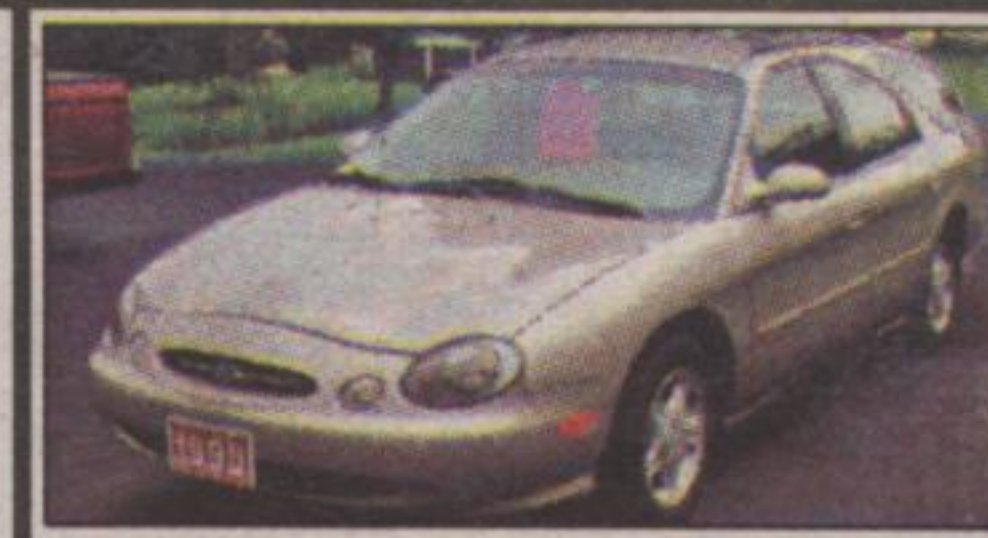
**\$370<sup>17</sup> mo.**  
**\$14,988**



#### 1998 SUNFIRE GT

Green, 4 cyl., Auto, Air, ABS, Cruise, Tilt, PWLM, Moonroof, AM/FM/CD, Alloy, 2 Dr. 41,969 kms  
Stk. #P9300

**\$321<sup>69</sup> mo.**  
**\$12,988**



#### 1998 TAURUS SE WGN

Gold, 6 cyl., Auto, Air, Cruise, Tilt, PWLS, AM/FM/Cass. 49,333 kms  
Stk. #P9288

**\$345<sup>33</sup> mo.**  
**\$13,988**

# WINTER READY? SEE OUR 4x4's



#### 1996 LEGACY OUTBACK AWD

Red, 4 cyl., Auto, ABS, PWLM, Cruise, Tilt, Cass., Alloy, 87,260 kms  
Stk. #C0004

**\$442<sup>88</sup> mo.**  
**\$17,988**



#### 1996 CHEROKEE LAREDO 4X4

Green, V6, Auto, Air, ABS, PWLM, Cruise, Tilt, Cass., Alloy, 98,583 kms  
Stk. #T0005

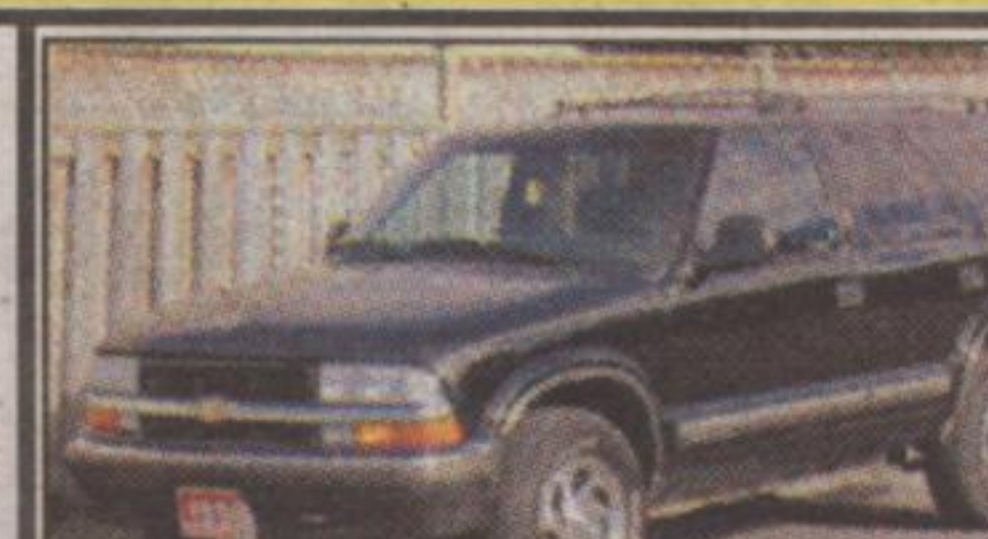
**\$442<sup>88</sup> mo.**  
**\$17,988**



#### 1997 TRACKER 4X4

Red, 4 cyl., Auto, Air, Cassette, 42,762 kms  
Stk. #T0006

**\$345<sup>33</sup> mo.**  
**\$13,988**



#### 1998 BLAZER LT 4X4

Black, V6, Auto, Air, Cruise, Tilt, PWL, Heated Seats, Leather, CD  
Stk. #T0004

**\$537<sup>94</sup> mo.**  
**\$22,988**



#### 1998 EXPEDITION XLT 4X4

White, V8, Auto, Air, Cruise, PWL Seat, Tilt, Alloy, AM/FM/Cass., 49,333 kms  
Stk. #P9085

**\$730<sup>91</sup> mo.**  
**\$29,988**



#### 1998 EXPLORER SPORT

Black, 6 cyl., Auto, Air, PWLS, Cruise, Tilt, AM/FM/CD, 4 WD  
Stk. #P9284

**\$515<sup>59</sup> mo.**  
**\$20,988**



#### 1998 F150 XLT S/C 4x4

Blue, V8, ABS, Auto, Air, Cruise, PWL, AM/FM/Cass., tilt, 56,860 kms  
Stk. #9353A

**\$610<sup>40</sup> mo.**  
**\$24,988**



#### 1999 F250 4X4 S/C

SUPERDUTY Blue, V10, Auto, Air, Cruise, Tilt, PWLM, Trailer tow, ABS, CD/Cass. 49,333 kms  
Stk. #T0001

**\$779<sup>42</sup> mo.**  
**\$31,988**

Purchase financing payments DO include taxes and administration charges. Sale prices do NOT include taxes and administration charges. Payments are based on 9.5% annually for loans \$25,000 and over, 9.65% annually for loans \$15,000 to \$24,999 and 9.9% annually for loans less than \$15,000. Term is 60 months with Zero Down Payment. Eg. for \$15,000 @ 9.65% APR payment is \$316.23 per month for 60 months, C.O.B. is \$3,973.20 for a total of \$18,973.20. Subject to credit approval.

### NEW WINTER HOURS:

Mon. - Thurs. 9 - 6 pm  
Fri. - Sat. 9 - 5 pm  
Sales Only  
Evenings or anytime by appointment only

On Highway #7 between Georgetown & Acton

# PARK MOTOR SALES

## 877-2261

parkm2@aztec-net.com

HALTON HILLS  
BEST SELECTION  
OF QUALITY  
PRE-OWNED  
VEHICLES.