

The dos and don'ts of brake use

Continued from pg. 6

get your brakes checked. Brakes can last 60,000 kilometres or more—or they can need replacement after 10,000-15,000 kilometres. Don't let this simple maintenance item slide, or the next sound you hear could be the crunch of a collision.

If you like paying for brake jobs, here's how:

1. Race up to stop signs and slam on the brakes.
2. Ride your brakes—use your right foot on the gas and rest your left on the brake pedal while you drive.
3. Stay really close to the car in front so you have to be on your brakes a lot to match every little change in speed.
4. Ignore those warning signs, like chirping brakes or grinding noises. Then a simple pad replacement becomes a full replacement of rotors and linings and costs hundreds more.

Car Care Canada suggests a simple five-

Make sure your car is a good fit

Evaluating car models for suitable fit is so easy it requires little or no practice!

Step One: Sitting in the driver's seat, move the seat back or forward with your foot firmly on the floor under the brake pedal until you have a slight bend in your knee.

Step Two: Adjust the steering wheel tilt control if available (but be sure you can see the dash gauges adequately), and move the adjustable seat back until you can rest the inside of your wrist on top of the steering wheel rim without moving your shoulder forward.

Step Three: Place your thumbs inside the wheel rim at the "9 and 3 o'clock"

point program that could save you hundreds of dollars over the life of your car.

1. Preventive maintenance. Every 10,000 kilometres or so, when you get your tires rotated, have your brakes inspected.

2. Don't neglect your parking brake. Using it regularly will keep the cable from seizing up, and will reduce your need for repairs.

3. Quality materials. Cheap stuff is a false economy that you'll pay more for in more frequent brake jobs and inferior performance.

4. Driving techniques. Keep a buffer space between you and the car in front, and use it to slow down on the engine so you don't have to use the brakes as often.

5. System flush. Once a year, have a full brake inspection, including all lines and hoses, and replace the brake fluid with fresh fluid.

—Automotive Industries Association of Canada

positions and wrap your fingers around the steering wheel. You should notice that your elbows are bent, that you are sitting fairly upright, but that the position is extremely comfortable.

Can you see over the top of the dash easily? Is there adequate head clearance with the roof lining or the edge of the moonroof opening? Is visibility of the dash obstructed by the steering wheel? Can you reach the pedals with ease and without being too close to the steering wheel?

Unless you can answer "yes," to all of the above questions, the suitability of the car you are evaluating, should be reconsidered.



APPLE Auto Glass®

FOR ALL YOUR GLASS NEEDS



WE PAY YOUR \$100 DEDUCTIBLE

MORE THAN JUST AUTO GLASS

- Truck Accessories • Upholstery
- Much More

**354 Guelph Street, Georgetown
(905) 873-1655**

FOR QUALITY VALUE & SERVICE

Arnie's BODY SHOP

SINCE 1979

COMPLETE COLLISION & REFINISHING

TO ALL MAKES OF VEHICLES

INSURANCE WORK - FREE ESTIMATES

UNIBODY REPAIR SERVICE

TOWING AVAILABLE

RENTAL CAR SERVICE

877-5720

HWY. #7 NORVAL

490 Guelph St. (Behind Gas Bar)

BENEFIT FROM OUR EXPERIENCE

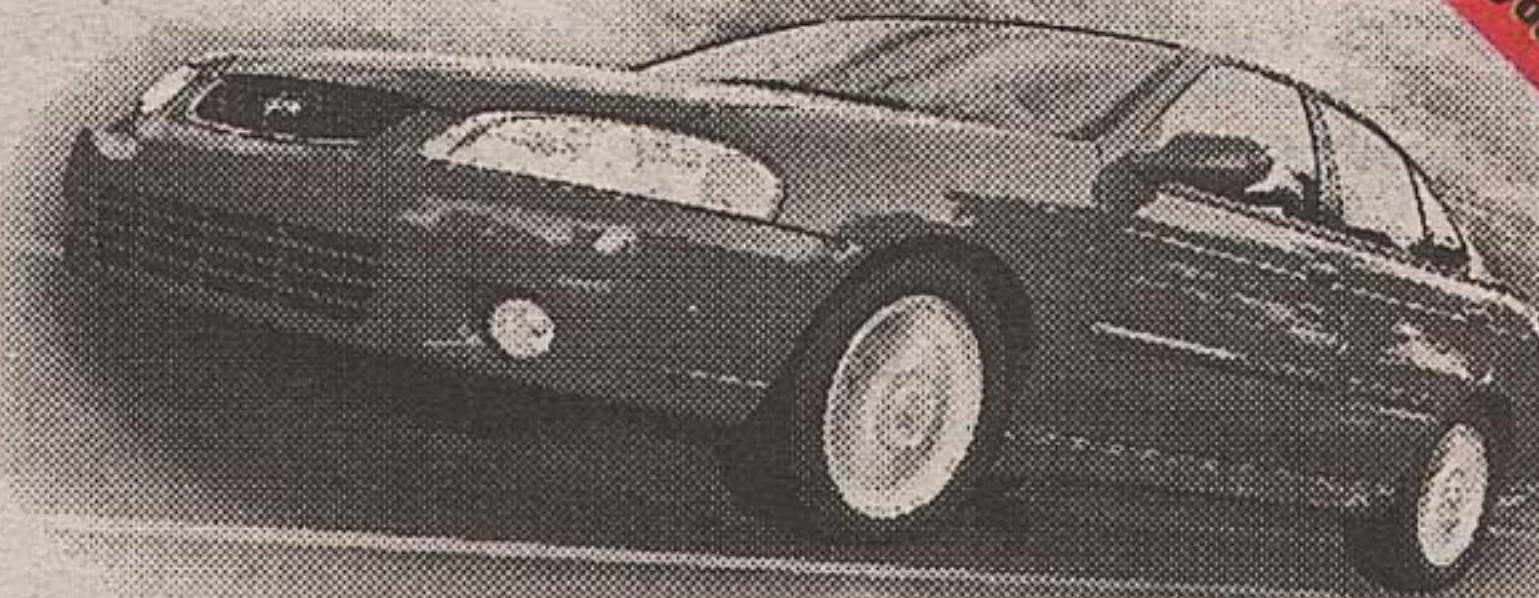
Nissan's Come in for a Spin Sales Event is back!



The 2001 Sentra XE

• 126-HP 1.8-litre engine • Air conditioning • 4-speaker AM/FM with CD audio system • Colour-keyed body side mouldings • 60/40 split folding bench seat • Centre console armrest • Vanity mirrors, and more...

Purchase Sentra XE with Value Option Package for only **\$16,398** OR Lease Sentra XE with Value Option Package for only **\$198/mo.*** for 48 months, only \$1,632 down.



Sentra XE starts at \$15,298

Low 4.8% financing available Ask your dealer for details

The 2001 Altima GXE

• 155-HP 2.4-litre DOHC engine • AM/FM with CD audio system • 4-speed automatic transmission • Air conditioning • Remote keyless entry system with panic alarm • Dual airbags • Power mirrors and door locks • Keyless remote entry system • And more...

Purchase Altima GXE for only **\$23,798** OR Lease Altima GXE for only **\$298/mo.*** for 48 months, only \$2,350 down.



Altima XE starts at \$19,998

Low 5.8% financing available Ask your dealer for details

*** SPECIAL PRICING ON ALL REMAINING 2000 MODEL XTERRA, CREW CAB TRUCKS & KINGCAB 4X4. FINANCING UP TO 72 MTHS, O.A.C. SEE DEALER FOR DETAILS**

**NORTH END NISSAN
610 MARTIN ST. MILTON
878-4137**



It's only a great deal if you get a great car.

Come In For A Test Drive!

Some prices may include freight and other charges. Limited time offer. 2001 Sentra XE shown with Value Option Package. MSRP \$16,398. 2001 Altima GXE shown with Value Option Package. MSRP \$23,798. *MSRP. Excludes taxes, license, title, and other available or regionally required equipment. Financing available. 4.8% financing available on 2001 Sentra XE. 5.8% financing available on 2001 Altima GXE. See dealer for details. ©2000 Nissan North America, Inc.