



# 2001

## ROLL-OUT

### INTRODUCING THE ALL NEW CIVIC



**\$ 238**  
 WITH ONLY \$2,350 DOWN  
 per month for 48 months,  
 FREIGHT & P.D.E. INCLUDED

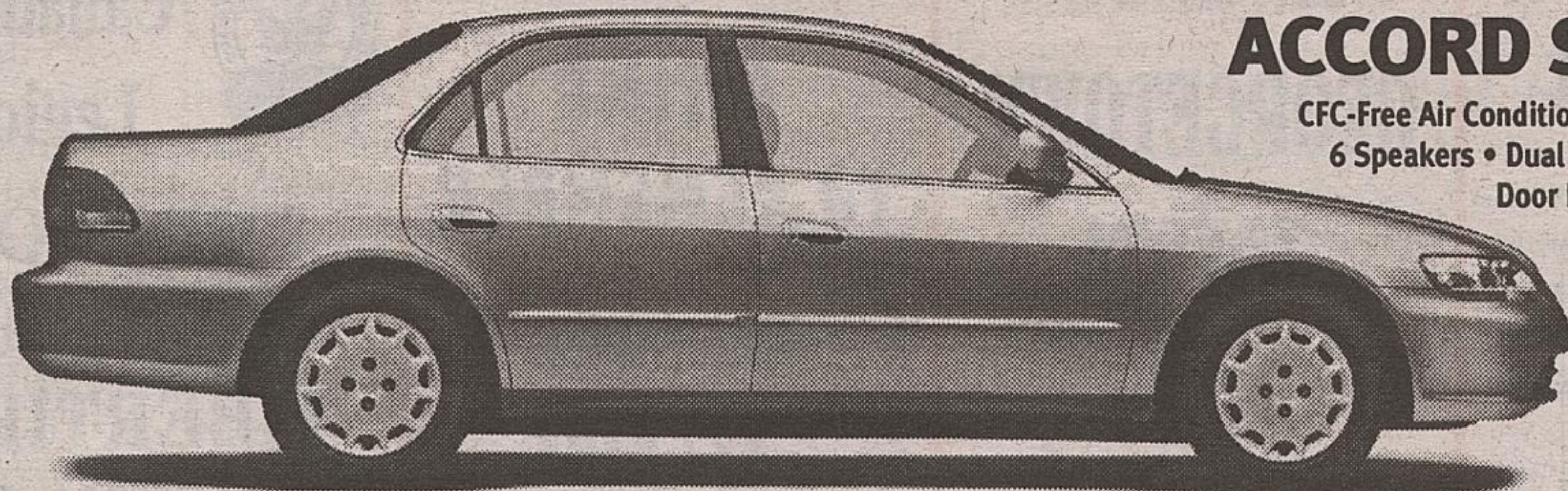
#### CIVIC SEDAN DX \$17,300 MSRP\*

New Body and Interior Styling • Improved Handling • Better Braking • Enhanced Performance • Reduced Exhaust Emissions • Improved Seating • More Interior Space • Quieter Ride. Standard Civic Sedan DX features: 115-hp, 1.7 Litre ULEV (Ultra Low Emission Vehicle) Engine • Dual Airbags • Immobilizer Theft-Deterrent System • 14" Wheels with Full Covers • Fuel Injection • 3-Point Seatbelts (all positions) with Front Height Adjustment • Adjustable Steering Column • Lockable Remote Fuel and Trunk Lid Releases • Tinted Glass • Reclining Front Bucket Seats • 60/40 Split Fold Down Rear Seatbacks • 5-Speed Manual Transmission • Chrome Front Grille • Window Washer Fluid & Fuel Low-Warning Light • LATCH Child Safety-Seat Anchor System • Rear Child-Seat Tether Anchors • & More...

**PLUS** The Civic Sedan DX Group Option package includes: CFC-Free Air Conditioning • Power Door Locks • High-Power AM/FM Stereo with CD Player • Micron Air-Filtration System • Audio Anti-Theft.

### FEATURING THE NEWLY STYLED ACCORD SEDAN

#### ACCORD SEDAN LX \$23,800 MSRP\*



CFC-Free Air Conditioning • 4-Speed Automatic Transmission • AM/FM Stereo CD with 6 Speakers • Dual Airbags • Micron Air Filtration • Fuel Injection • Power Windows, Door Locks & Heated Mirrors • 2.3 Litre, 150-hp, VTEC Engine • Front & Rear Stabilizer Bars • Body-Coloured Door Handles, Mirrors & Side Mouldings • Front & Rear 3-Point Seatbelts • Anti-Theft Immobilizer • Cruise Control • Remote Trunk/Fuel Lid Release • Child-Proof Rear Door Locks • Front & Rear Double-Wishbone Suspension • & More...

**\$ 338**  
 WITH ONLY \$3,175 DOWN  
 per month for 48 months,  
 FREIGHT & P.D.E. INCLUDED

**\$ 368**  
 WITH ONLY \$3,975 DOWN  
 per month for 48 months,  
 FREIGHT & P.D.E. INCLUDED

#### ACCORD SEDAN LX-V6 \$26,800 MSRP\*

ALL THE FEATURES OF THE ACCORD SEDAN LX **plus:**

3.0 Litre, 200-hp, VTEC V6 Engine • Traction Control • 4-Wheel Disc Brakes with ABS • Front Seat Side Airbags with Front Passenger's Seat Size & Position Sensors • 8-Way Power Adjustable Driver's Seat • & More...



### Final Days 2000 CR-Vs 5.8%<sup>†</sup> PURCHASE FINANCING

#### CR-V EX \$28,000 MSRP\*

4-Speed Automatic Transmission • CFC-Free Air Conditioning • Power Windows, Door Locks & Mirrors • ABS Brakes • Dual Airbags • Real Time™ 4-Wheel Drive • Keyless Remote Entry • AM/FM Stereo with 4 Speakers & CD Player • 15" Styled Alloy Wheels • Body-Coloured Door Handles & Mirrors • 2.0 Litre, 146-hp DOHC Engine • Fold-Down 50/50 Split Rear Seatback • Removable Folding Picnic Table • 4-Wheel Double Wishbone Suspension • Rear Washer/Wiper • Reclining Front Bucket Seats • Adjustable Steering Column • Remote Power Hatch Release • Front & Rear Stabilizer Bars • Body Side Mouldings • Fuel Injection • Cruise Control • & More...



Your Neighbourhood  
**ONTARIO**  
 HONDA  
 DEALERS

TO TEST DRIVE A CIVIC OR FOR MORE INFORMATION VISIT OUR WEBSITE AT [www.civictestdrive.com](http://www.civictestdrive.com) OR CALL 1-866-GO-CIVIC

**HONDA**  
 BUILT WITHOUT COMPROMISE

Lease and finance offers are available, on approved credit, only through Honda Canada Finance Inc., until October 31, 2000. Lease payments shown are for 48 months and include \$850 for freight and P.D.E. with 96,000 km allowance (10¢/km exceeding 96,000 km applies). \*Based on a new 2001 Civic Sedan DX-G, 5-Speed/Accord Sedan LX, Automatic/Accord Sedan LX-V6, Automatic (model ES1531PX/CG5641P/CG1641PB) \$238/\$338/\$368 per month for 48 months. A.L.R. 9.41% (total lease obligation of \$11,424/\$16,224/\$17,664) Down payment or equivalent trade of \$2,350/ \$3,175/\$3,975 required (Zero down payment plans available), plus first monthly payment and security deposit (\$275/\$400/\$425). Option to purchase at lease end for \$8,996/\$11,424/\$12,864 plus taxes. \*M.S.R.P. does not include freight and P.D.E. (\$850). †5.8% conventional financing is available on new 2000 CR-Vs for 24, 36, 48 or 60 month terms. Financing example: \$20,000 at 5.8% per annum equals \$384.80 per month for 60 months. C.O.B. is \$3,088.00 for an obligation total of \$23,088.00. Down payment may be required. ††Taxes, licence, insurance, administration and maintenance fees are additional. Dealer may lease/sell for less. If your dealer does not have the 2001 vehicle you want in stock, the dealer will gladly order it for you. See your neighbourhood Ontario Honda Dealer for details.

FOR A HONDA DEALER NEAR YOU, CALL 1-888-9-HONDA-9 OR VISIT OUR WEBSITE AT [www.honda.ca](http://www.honda.ca)