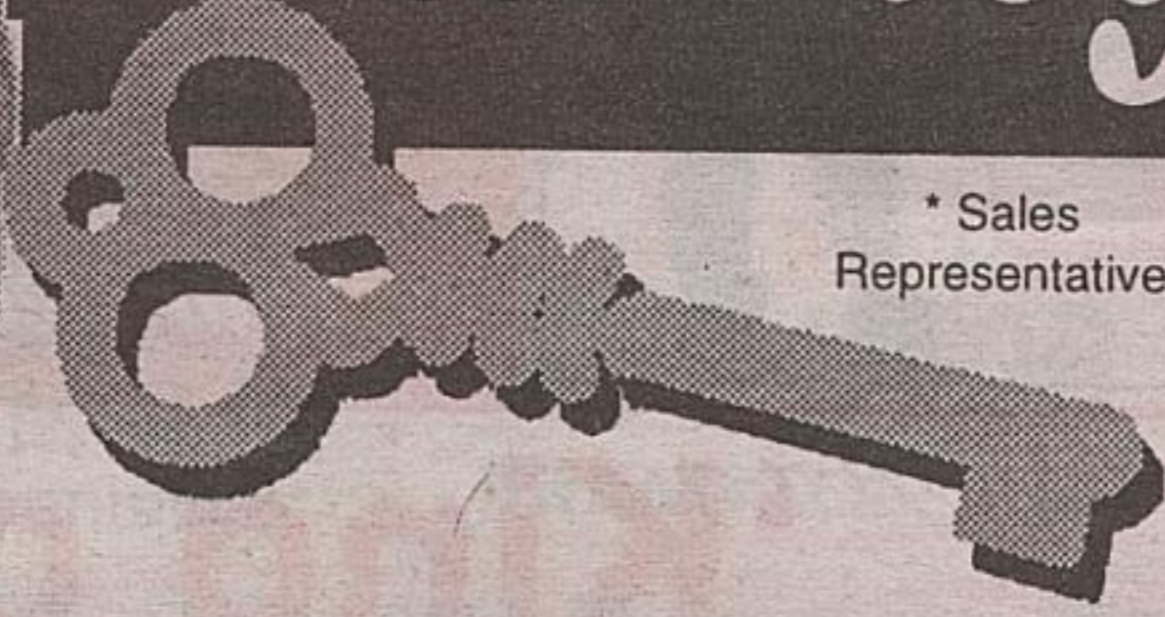




Your key to real estate service!

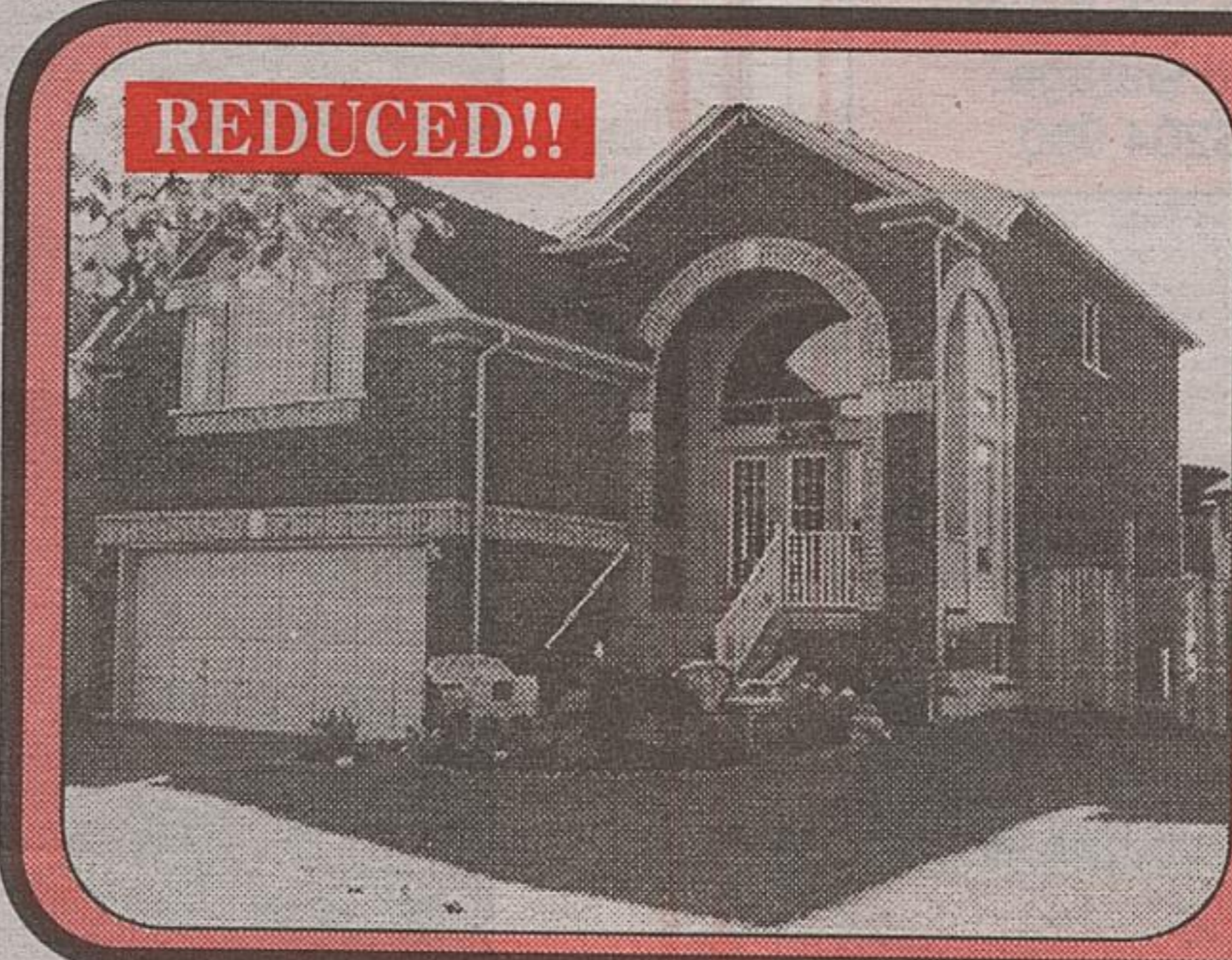


Johnson Associates
HALTON LTD., REALTOR

Toronto: (905) 874-3040
Erin: (519) 833-9714
PERFORMANCE COUNTS

Kathy Ellis LIFETIME MEMBER

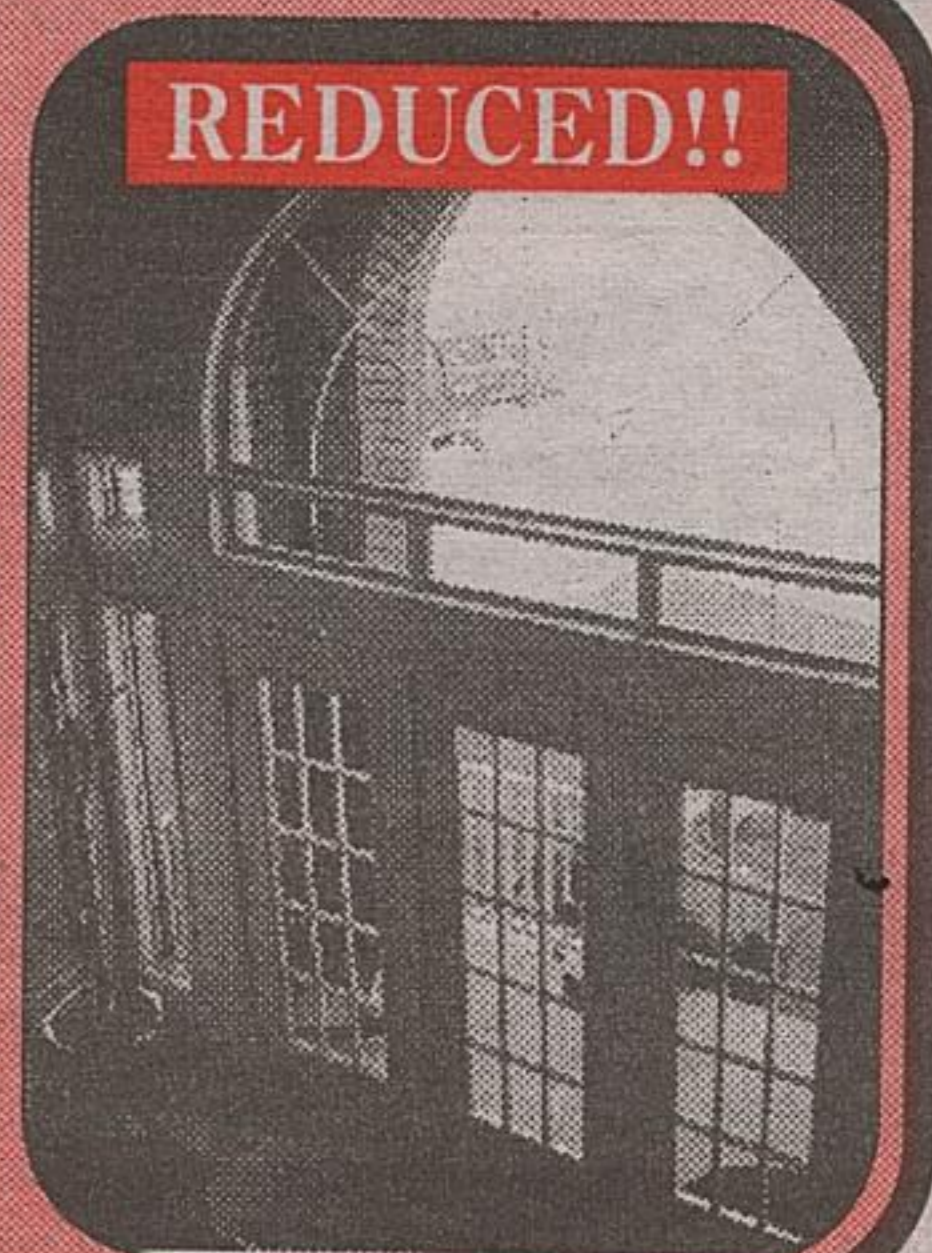
★★★★★ PERFORMANCE (JA) (905) 877-5165 PRESIDENTS (JA) CIRCLE



REDUCED!!

SUPER BRUNSWICK MODEL APPROXIMATELY 2190 SQ. FT.

Really pretty house, freshly painted and decorated. Nicely upgraded with 40 oz. Broadloom, ceramics, glass block, kitchen cabinets, center island, C.A.C., 5 pce. master ensuite with corner bath and beautiful ceramics. The family room is located perfectly and decorated with faux paint and has a gas fireplace with bleached oak mantle. This home has a great open floor plan and the huge palladium window lets in lots of light. The rear yard is enormous, lots of room for pool and much more. Fernbrook is building upgraded Brunswick models for \$296,000.00
Our Price \$283,500!!

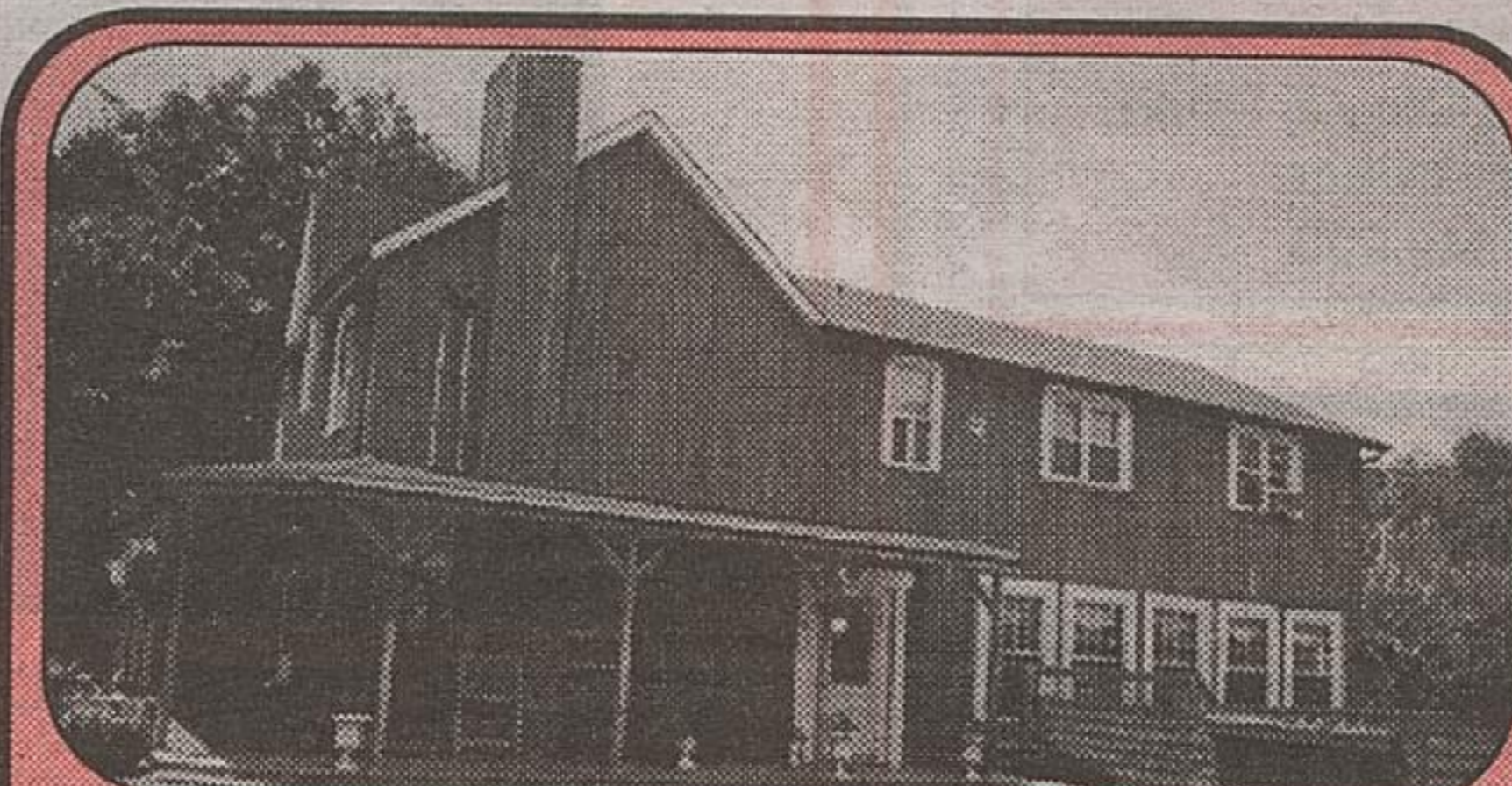


REDUCED!!



THIS GORGEOUS BUNGALOW...

has been updated and renovated with style and quality. The vendors have spent \$\$\$\$ adding two additions, gorgeous pool and landscaping and many updates. The master bedroom is a dream with many windows, walkout, hardwood floors, and a five piece washroom designed to perfection with top quality fixtures and ceramics. The kitchen has been enhanced with a gorgeous garden room with huge windows, cathedral ceilings and views of pond. The vendors are motivated. \$539,000.00



LIVE & WORK HERE!?

Fantastic building and property in beautiful Belfountain on the Credit River combined with successful restaurant business and three bedroom living quarters. The Belfountain Inn is a very successful business with an outstanding track record. The Building is almost brand new with a major addition done in the last few years. The dining room is very spacious, with outstanding decor and ambiance. The apartment has three bedrooms, two bathrooms, and cathedral ceilings and walk-out to deck and private view of the Credit River. The basement has an overhead door and would be perfect for an extra kitchen or catering business. There are three additional bedrooms in the older portion of the building each with their own bathroom and entrance. This is a fabulous building and location. \$595,000.00.

4 PARCELS FOR SALE IN A RURAL SETTING

2 Beautiful Acres surrounded by trees - lovely view. Erin Township. \$119,000.

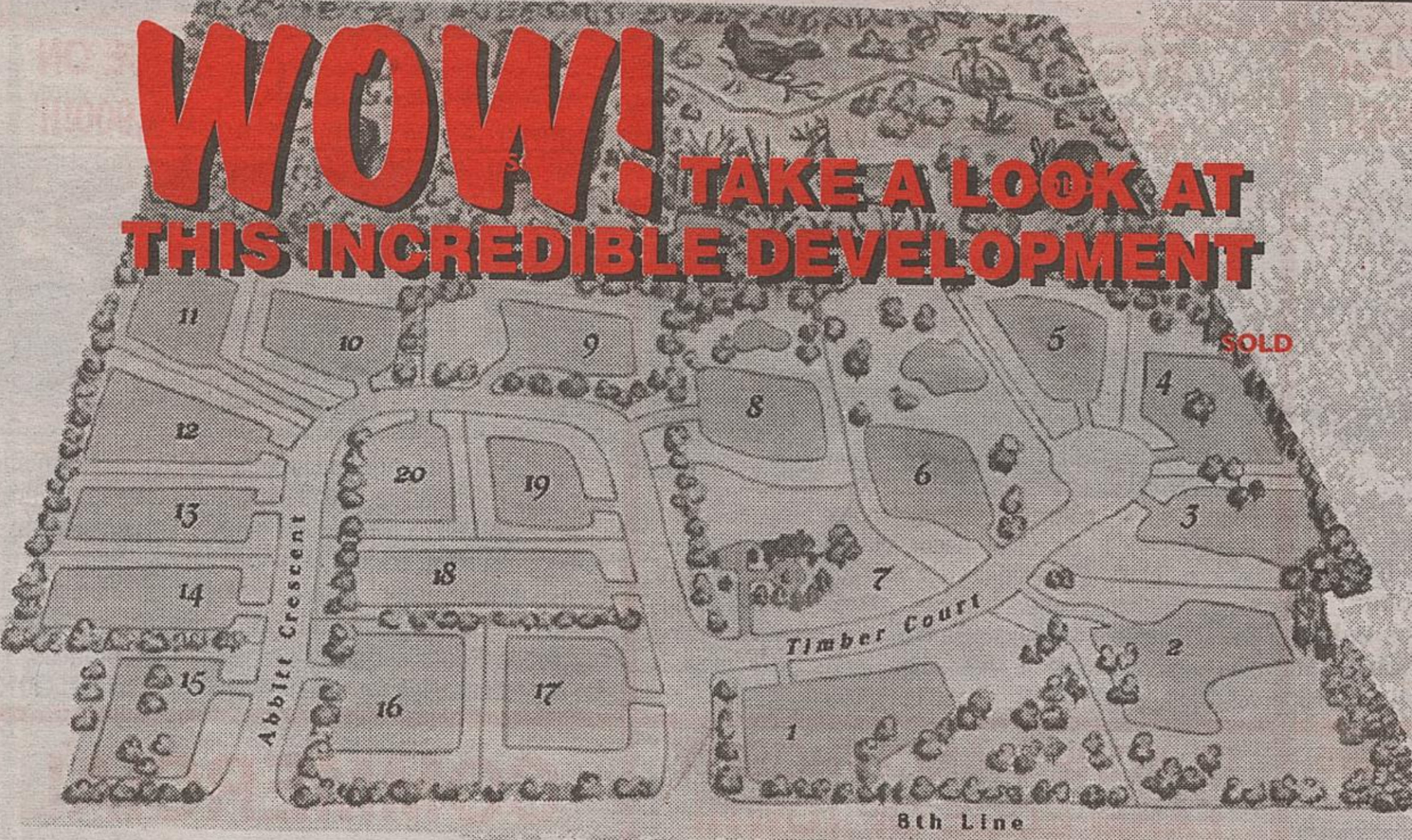
8.3 Acres in the village of Erin and zoned future development. This property actually contains two parcels, separately deeded. They are accessed by a right of way. This land offers exceptional views and privacy all within the Town of Erin. The vendors were developing the property with the potential for a 40 unit apartment - or you could build your dream home with exceptional views of the hills of Erin. \$199,000.

1.3 Acres with C1 Zoning in the village of Marsville. This zoning offers many uses. You can combine your commercial with residential. \$79,000.

COUNTRY COTTAGE ON 32+ ACRES

Just seconds south of Erin, 32.33 acres with a cute two bedroom cottage. The land is really unspoiled with lots of bush and a very pretty stream. The cottage has cathedral ceilings with wood beams, this cottage has tons of potential but needs some work. \$199,000.

LISTINGS NEEDED! Thinking of selling? Please give me a call.



WOW! TAKE A LOOK AT THIS INCREDIBLE DEVELOPMENT

Beech Brooke Country Estates

Presented **Kathy Ellis**

Beautiful Country Estate in Halton Hills.
~~19, 17~~ 16 Lots for Sale

SPECTACULAR ESTATE LOTS IN HALTON HILLS

You will not see another development like this one again!

BUY NOW! Purchase Price Includes Hydro/Bell underground cable from lot line to House site for firm lot SALES on or before November 15th, 2000. (Some Conditions may apply)

- These lots are priced from \$159,000., they range in size from 1.5 acres to 5.4 acres
- Property owners receive a 1/20th share in the Conservation Park on the property
- The Wells have been drilled and there is plentiful-potable water • Buy your lot today so that you can build tomorrow

Call me - let me give you a guided tour - I know what each lot has to offer or ask for our color brochure.

Come and visit the site. Excavation for road construction is underway and access is easy.