

Orval S.
GATES
REAL ESTATE BROKER
519 **856-2207**
ROCKWOOD

ROCKWOOD \$164,900



66x132 Lot 16 x 27 garage quiet street central locale

Main Street



Commercial over 2000 sq. ft. sep. apartment income hoist in shop \$240,000

Guelph-Close to U of G & Mall



3 bdrm, gas, 2 baths, never rented, new roof, rec rm with gas FP \$174,900

**BUILDING LOTS
Rockwood and Area**

\$66,900 - 120 X 150 triangular residential or commercial - town services

\$69,900 - 2.4 acres to be serviced with town water and sewer, fronts on small stream and overlooks old mill pond.

\$134,900 - Estate Lot without restrictions, 200x500 approx. with stream at back and well is installed 4 miles SE of Rockwood

\$139,900 - Estate Lot with pond and ravine type bank for fab. walkout basement, 200x500 (2 acres) approx. 15 minutes to Milton

Puslinch \$329,000



under construction 14 acres 15 min to 401 at Campbellville



Maureen Plucinsky B.Sc.
Sales Representative

Town & Country Specialist

<http://remax-maureen.com>

maureen@remax-maureen.com

Loc.: (905) 877-5211 Tor.: (905) 874-3051

Erin: (519) 833-7117 Fax: (905) 877-5154

1-800-834-5516



Blue Springs Realty (Halton) Corp.

NW corner of 5th L & 10th SR



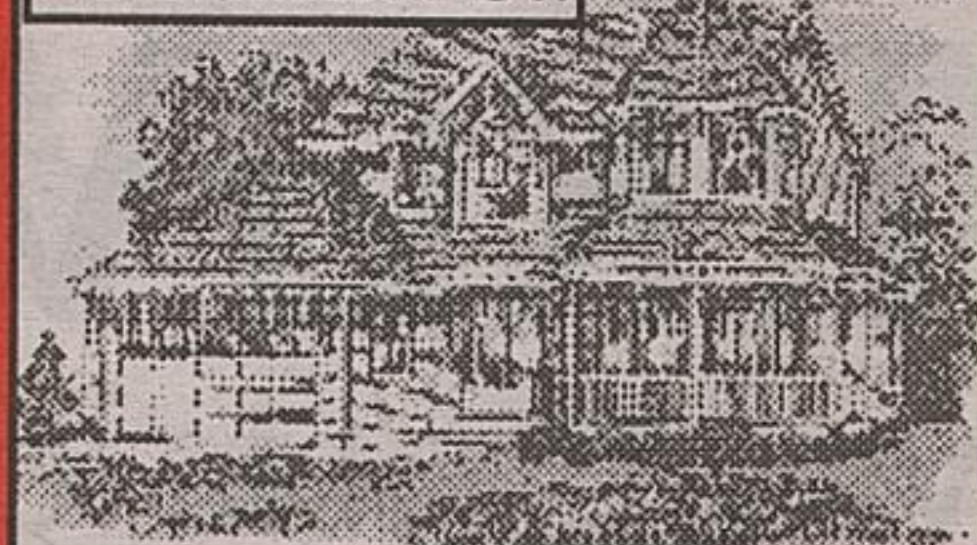
Halton Hills: Walnut tree lined driveway leads to this picturesque century home set far back from a quiet paved road S of Georgetown. ~30ac. 4 bdrms, 2 WRs & MF family rm. Bank barn in very good condition. Drive shed. Land used as a sod farm. < 10 min to 401 & GO train.

~95 AC.



Halton Hills: ~95ac farm with 2 homes (3br & 5 br) loc S of Georgetown, ~10 min. to 401 at Traf Rd. Bank barn with 15 stalls (could --> 40), 5 paddocks, shed & drive shed (80'x40'). Excellent well. Productive, high nutrient soil, suitable for many crops. Close to GO.

28 Market St.



Prestigious Park Area. "Eco Block", R2000, EnviroHome to be built on gorgeous lot with mature trees. "Eco Block" (insulated, reinforced concrete), ~ R50. Perfect for allergy sufferers. 4bdrms, 3 WRs, w/o bsmt now onto trees & creek. 2 car gar. Wrap around deck. \$449,000

NEW 8412 E-G TL

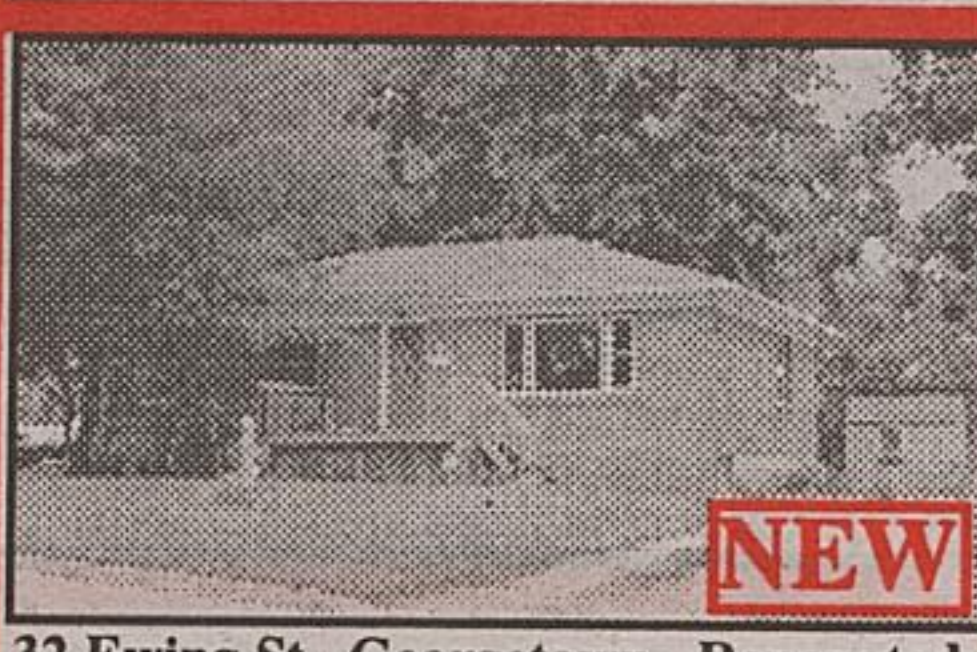


Eramosa-Garafraxa TL: Fabulous 5.25 ac estate with 4232 sq.ft. of living space; 3 oak stall horse barn (40' x 24'); wood workshop(756sq ft); electronic workshop with 2 offices & 2pc(1270sq ft) & utility garage(675sq ft), all built to highest standards. Mature trees, stream & 2 ponds!

4915 1st Line Erin

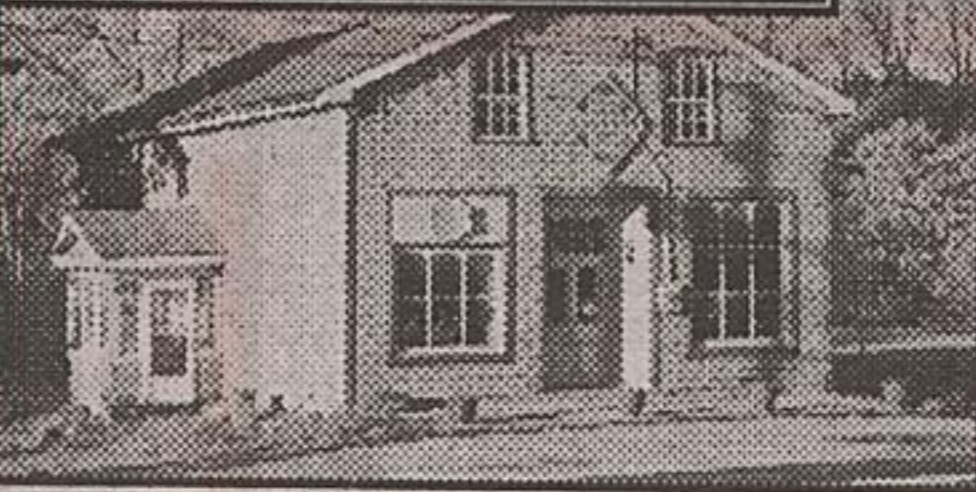


Erin, SW: Elegant, accent stone & brick home on 10 rolling acres (503' x 873') with some mature trees. Open concept. 4 bdrms, 3 WRs, MF MBR with exquisite ensuite, MF family rm & sun rm. Walk-out basement. Sunken Great Rm with pillars, picture windows, FP & cathedral ceiling. Suitable for horses. Superb!



32 Ewing St., Georgetown. Renovated 2(was 3) + 1bdrm, 2 washrm home with bsmt in-law. New hydro panel, outside doors, some windows, carpet in apt, floor in kit, ceramic floors in foyer & WR. Freshly painted walls & ceilings. Hi-eff nat gas furnace. **Huge ravine lot.** New shed. Parking for 3 cars. **\$183,800.**

18 Main St., Hillsburgh

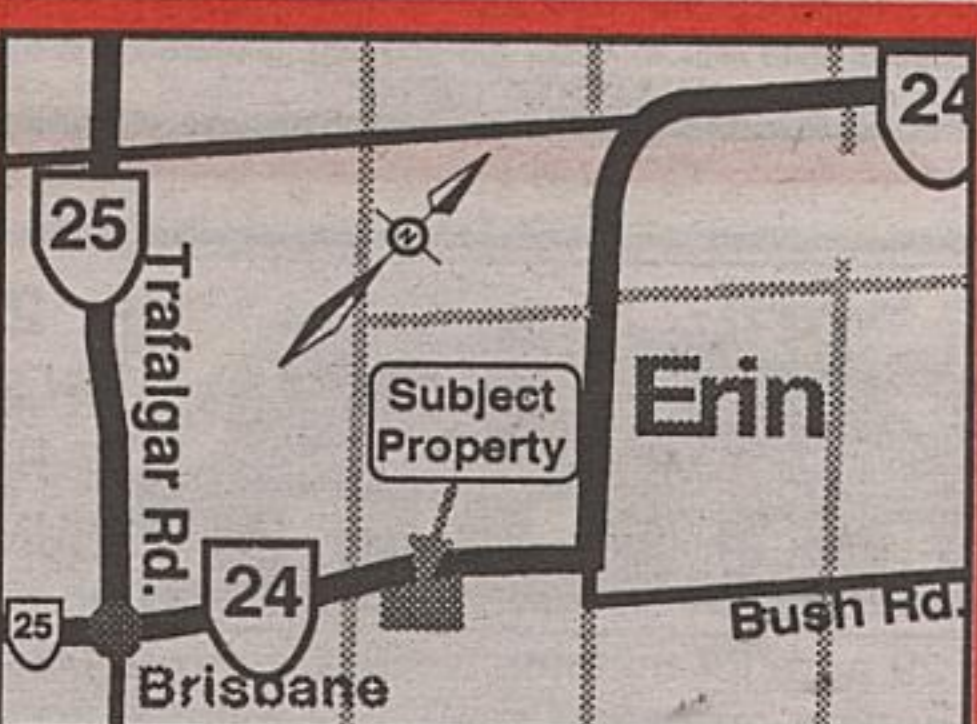


Hillsburgh: Entrepreneurs. Com/Res located on S end of Main St, w/s. Main floor: 4 retail rms, storage rm, front & rear office & 2 pc. Upper level: kit (no stove), bdrm, office & huge storage room. Hi-eff natural gas furnace ~8 yrs old. Updated wiring. 9 pkg spaces. **\$149,900** Prominent location.

Milton



Rare 100 ac. SE corner of 30th SR & 2nd Line. 15 min N of 401. 4200 ft F. Electric railway, To to Guelph, removed & became access road through property. **Blue Springs Creek** runs through. 1/2 bush & 1/2 clear. No railway, hydro tower or traffic in area. Paved road. **No severance taken! Worthy of your estate.**

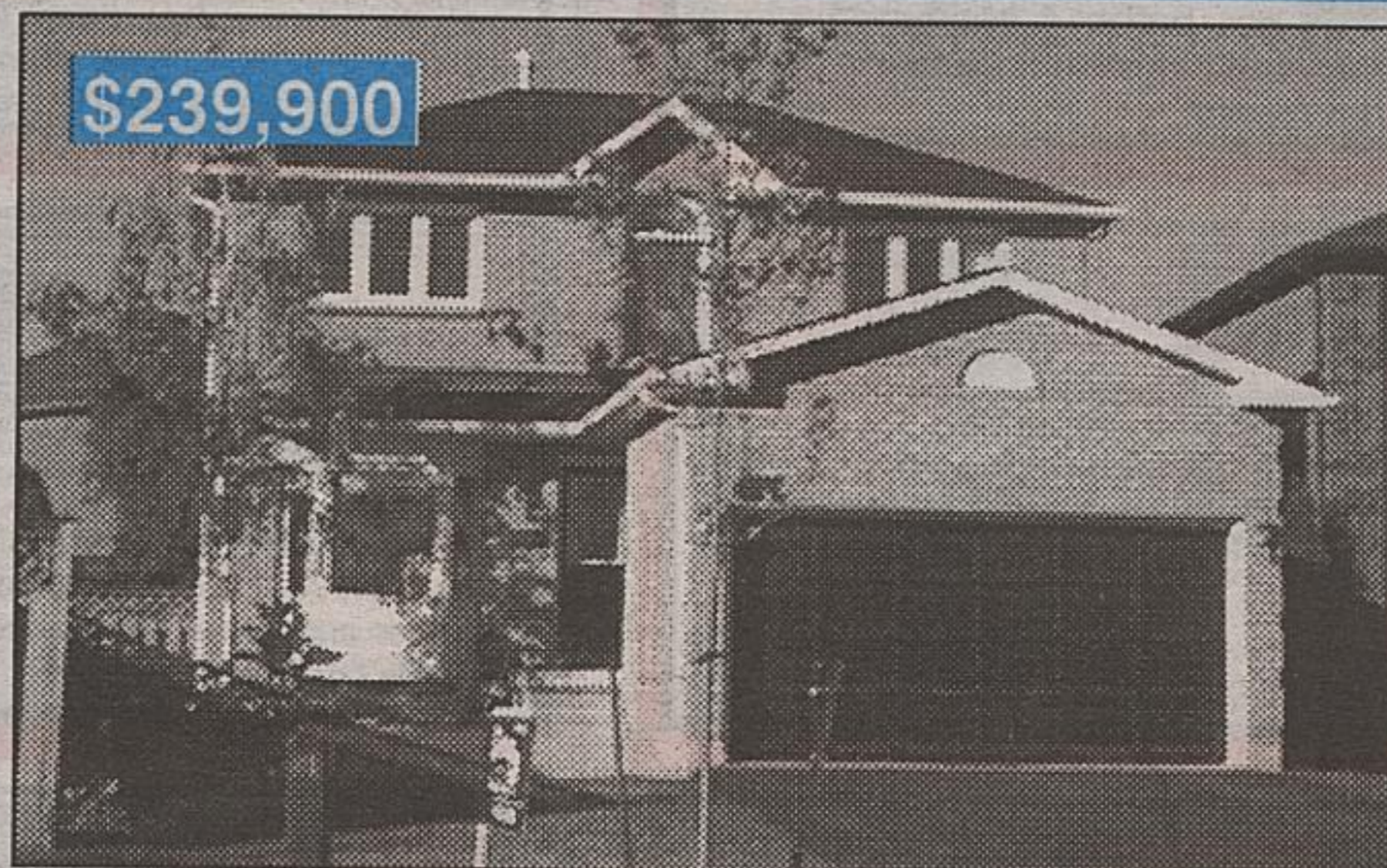


Erin ~13.3 Ac. \$135,000 1092 ft frontage on Hwy #24, W of Erin, s/s. Mainly clear & dry; back, treed conservation. Potential for a pond. Build your home facing the woods. Excellent location. < 20 min to GO.

CALL CENTURY 21 - (905) 702-9800 - CALL CENTURY 21 - (905) 702-9800



ADA BATHGATE*
Sales Representative



WHERE THE HEART IS!

Quality 3 bedroom home in G-town South. Features a large fenced yard with mature landscaping, deck with gas line for BBQ, central air, generous kitchen, rec room, cold storage, double car garage with openers. A great home in a nice family neighbourhood! A must see! Call **Tara*** today ext 56.



TARA BOLDEN*
Sales Representative



ERIN EXECUTIVE ESTATE \$419,900

3/4 acre, professionally landscaped with fully fenced yard with amazing views! Large insulated workshop with hydro. Family size gourmet kitchen, 3+1 bedrooms, 3 bathrooms. Beautiful sunroom, finished rec room with walkout. Custom built by one of area's finest builders. Call today for your personal tour! **Cathy**** or **Jim*** ext. 51.



PARADISE FOUND!

\$229,900

Beautiful 48 rolling acres in Erin awaits your dream home! Enjoy breathtaking views and a peaceful country setting. Trees border this spectacular property, complete with drilled well. Don't miss this amazing opportunity. Call for details! **Cathy**** ext. 51 or **Tara*** ext 56.



CATHERINE POLLARD**
Broker/Owner



Futures Realty Inc.

(905) 702-9800

1-888-524-6005

www.century21futures.com



Earn Air Miles when you list or buy a home with Century 21. Stop by or call for details.

Earn an extra 1000 Air Miles when you buy or sell a home with Century 21 Futures in September or October.



JAMES POLLARD*
Sales Representative

THE MOST RECOGNIZED NAME IN REAL ESTATE. THE BEST TRAINED SALES PEOPLE. THE WORLD'S LARGEST REFERRAL NETWORK. AIR MILES™ PROGRAM SPONSOR.
PUT THE POWER TO WORK FOR YOU.

Each office is independently owned and operated. © and ™ Registered trademarks of Century 21 Real Estate Corporation used under license. ©™ Trademarks of AIR MILES International Holdings N.V., used license by Loyalty Management Group Canada Inc. and Canada Inc. and Century 21 Real Estate Canada Ltd.

CALL CENTURY 21 - (905) 702-9800 - CALL CENTURY 21 - (905) 702-9800