

MARTHA SUMMERS*

Toronto/Local
877-5165
(905) 874-3040 (Miss.)
(519) 833-9714 (Erin)



Sales Rep.
*President's Circle Award
Winner consecutively
since 1988*

Performance Group
Member
consecutively since
1993

www.realtor.com/toronto/msummers

247 Guelph St., Georgetown
E-mail:
msummers@idirect.com



Johnson Associates
HALTON LTD., REALTOR



MARTHA SUMMERS = PROVEN PERFORMER



10 MINUTES TO 401 - COUNTRY GARDENERS DELIGHT

Wind through the maples to your charming 4 bedroom home with main floor master with full ensuite. Great views from the eat-in kitchen. Super main floor family room with fireplace and beamed ceiling. Lovely gardens, fenced dog run, 2+ car garage and more! **Martha Summers***

MIT-00



PERFECTION ON 5 COUNTRY ACRES \$499,000

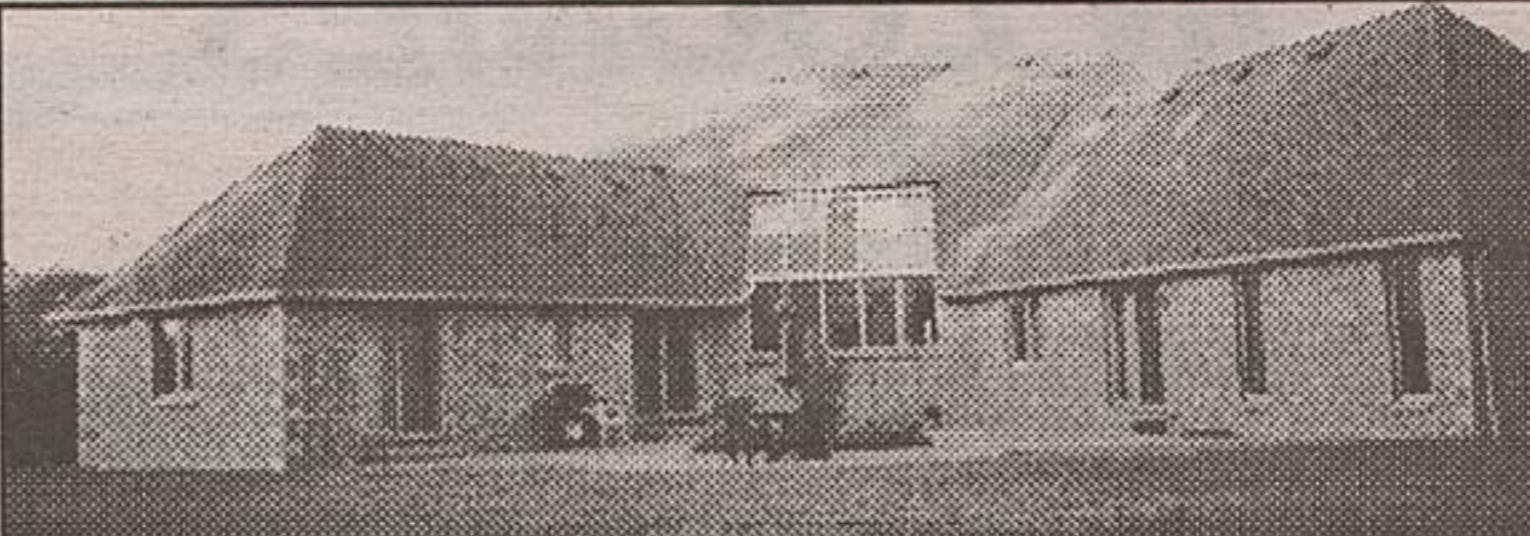
You won't believe what this home offers!! 4 years young, mature landscaping, pond, pool, Florida room with hot tub, skylights, open concept, hardwood, ceramics and more. This home was built with quality throughout. Words cannot describe just how special this home is. Fabulous!! **Martha Summers*** ARS-00



PERFECTION & PRIVACY - ESTATE LIVING AT ITS BEST - \$459,900
The quality of Charleston continues. 2.34 acres with mature forest on 2 sides. Four bedrooms, 3 full baths upstairs, Barzotti cherry kitchen walking out to private rear yard. Master ensuite you'll never want to leave and many more upgrades!! Great Location, minutes to Village, 401 or "GO" Station. **Martha Summers*** JAM-00



WANT TO BUILD AND DON'T HAVE TIME!! \$575,000
Look no further. Custom quality stone on 2 private acres complete with basketball court and small pond. Main floor master with ensuite and walkout to courtyard. Gourmet kitchen with 2 storey solarium windows with views of yard. Family room with stone fireplace and wet bar. Only 15 min to 401. **Martha Summers*** ENR-00



CENTURY FARM - 99 ACRES - \$475,000

Two generations have enjoyed and maintained this charming Victorian set in a park like setting on a paved road 1 hr. N>W of Toronto. Upgraded kitchen, bathrooms and family room create a great atmosphere to raise your family. Large bank barn with good height for horses, cropped lands, walking trails thru the woods and a small pond. You won't be disappointed. **Martha Summers*** MCK-00

NEW
TOO NEW FOR PHOTO

PRIVACY AND SPACE IN A TREET SETTING - \$469,000
Fabulous 4+ bdrm executive of approx. 4200 sq. ft. on a treed lot on a quiet street in a mature area. Recent hardwood, huge oak country kitchen with walkout to private deck overlooking extensive gardens. Main level office and fam rm. Full finished lower level at walkout with 2nd kitchen, 2 bdrms, rec room with fireplace and full bath. Great for the in-laws! **Martha Summers*** SJA-00



WALK TO "GO STATION" - \$169,000
Great mature location with spacious 2 bedroom bungalow on quiet street walking distance to stores and "GO" - Low maintenance, lots of upgrades, fenced yard. **Martha Summers*** STO-00



IMPRESSIVE COUNTRY, CLOSE TO TOWN \$539,000



Details are important and this owner knows it. Hardwood floors, every woman's dream kitchen overlooking the family room and walking out to the sunroom overlooking the pool, the gardens, the bush at the rear and the separate 5th garage or workshop. Formal living room and dining room plus main floor office. Huge billiard room and entertainment area with fireplace. Minutes to Georgetown "GO". **Martha Summers*** BOS-00



A CENTURY 10!! VICTORIAN CHARMER - 9 ACRES - \$395,000
The huge country kitchen with original wainscotting welcomes you to this 4 bedroom home in move in condition. Original pine floors, high ceilings, large windows and a fabulous updated bathroom with whirlpool are just a few features. 3 car garage, bank barn with 5 stalls, paddocks all set well back from the road with a tree lined drive. **Martha Summers*** PAL-00



PERFECT PLACE TO MAKE YOUR START - \$169,900
Upgraded 3 bedroom bungalow with family sized oak kitchen, gas fireplace with oak mantel in living room. Finished lower level with recreation room and 4th bedroom. Fenced yard. Better hurry, this one definitely won't last. **Martha Summers*** BAK-00



"SIMPLY ELEGANT IN THE COUNTRY" - \$579,000
Your wishes are answered with this fabulous customized home. Mn level features family room and separate children's playroom, huge cherry kitchen overlooking nature, formal dining and living room with gleaming hardwood floors, a separate office and extra ceiling height on the main level. 4 bedrooms up with 3 full bathrooms plus the master boasts it's own exercise area and a gas fireplace. **Martha Summers*** SAV-00



2 HOMES - 15 ACRES - TERRA COTTA
2 completely separate, significantly upgraded bungalows joined by double attached garage. Situated overlooking fabulous pond, pool & woods. 5 stall horse barn, paddocks and sand ring. **Martha Summers*** \$649,900. DEG-00



58 MCKINNON AVE., GEORGETOWN



THE LURE OF BELFOUNTAIN ROLAND REIDMAN QUALITY - \$599,000
A dream was built and recognized in "Victorian Magazine". This is the home with fabulous attention to detail, high ceiling, wide baseboards, cherry floors and cabinets, period trim and moldings. Four bedrooms with 3rd floor loft. Separate 4+4 bay garage. Listen to the river and enjoy. **Martha Summers*** JEF-00



LOG HOME IN THE COUNTRY - 48 ACRES
Wind down the treed driveway to this wonderful setting on which is situated in a bedroom log home with character and perfection. Watch the sunsets, watch your animals in the fields, watch the wildlife on the pond. Loafing barn with 2 stalls. Very Special at \$549,000! **Martha Summers*** DEV-00



7 & 11 GEORGE STREET, HILLSBURGH



5142 WELLINGTON ROAD, ERIN



5497 SIXTH LINE, ERIN



6036 EIGHTH LINE, ERIN



80 STEVENS CRES., GEORGETOWN



5674 2ND LINE, ERIN



9269 EIGHTH LINE, HALTON



5690 SIXTH LINE, ERIN

AVAILABLE LAND - Martha Summers*

Halton - Build your dream home, 1.4 acres treed - \$149,900 2 Plus Acres - Caledon location near conservation & stream. \$54,900. Belfountain South is just a great location to own 132 acres of rolling, forested and open land. A great investment at \$350,000.

"MARTHA SUMMERS = PROVEN PERFORMANCE"