



**Maureen Plucinsky B.Sc.**  
Sales Representative  
<http://remax-maureen.com>  
[maureen@remax-maureen.com](mailto:maureen@remax-maureen.com)



Loc.: (905) 877-5211 Tor.: (905) 874-3051  
Erin: (519) 833-7117 Fax: (905) 877-5154  
1-800-834-5516

**Blue Springs Realty (Halton) Corp.**

4915 1st Line Erin



**Erin, SW:** Elegant, accent stone & brick on 10 rolling ac.(503' x 873') with some mature trees. Open concept. 4 bdrm, 3 WR, MF MBR with exquisite ensuite, MF family rm & sun rm. Walk-out bsmt. Sunken Great Rm with pillars, picture windows, FP & cath ceiling. \$549,000

~95 AC.



**Halton Hills:** ~95ac farm with 2 homes (3br & 5 br) loc S of Georgetown, ~10 min. to 401 at Traf Rd. Bank barn with 15 stalls (could --> 40), 5 paddocks, shed & drive shed (80'x40'). Excellent well. Productive, high nutrient soil, suitable for many crops. Close to GO.

28 Market St.



**Prestigious Park Area.** "Eco Block", R2000, EnviroHome to be built on gorgeous lot with mature trees. "Eco Block" (insulated, reinforced concrete), ~ R50. Perfect for allergy sufferers. 4bdrms, 3 WRs, w/o bsmt now onto trees & creek. 2 car gar. Wrap around deck. \$449,000

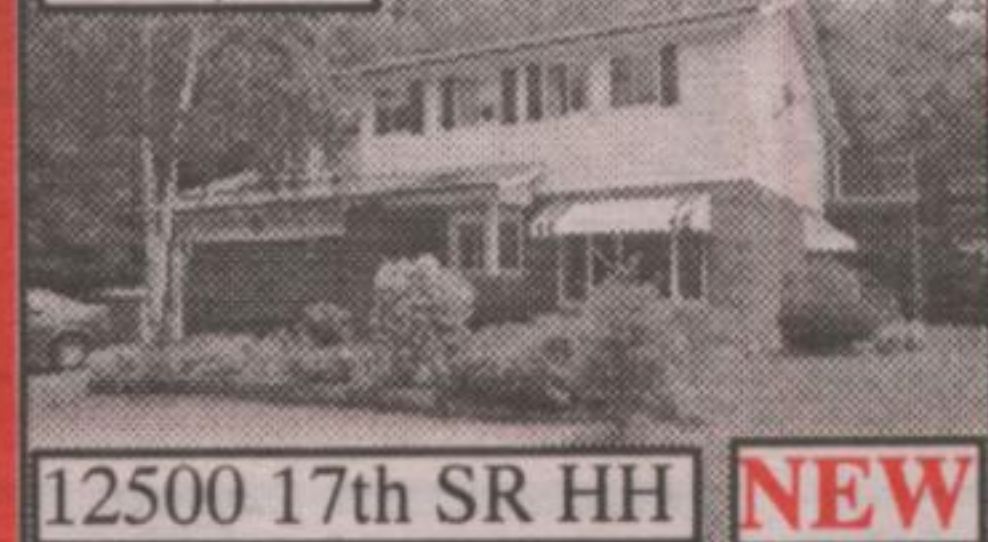
**NEW**

8412 E-G TL



**Eramosa-Garafraxa TL:** Fabulous 5.25 ac estate with 4232 sq.ft. of living space; 3 oak stall horse barn (40' x 24'); wood workshop(756sq ft); electronic workshop with 2 offices & 2pc(1270sq ft) & utility garage(675sq ft), all built to highest standards. Mature trees, stream & 2 ponds!

\$329,900



**Georgetown:** Private executive on two ac. 4 bdrm, 3 WR, FP, gorgeous kit with updated cabinets, ceramic floor, granite counters & walk-out. Hrdwd in family rm. 2nd floor sun rm overlooking hardwood bush. Finished bsmt with gas FP. ~7 minutes to Georgetown GO. Value!

\$229,900

1/2 Ac.



**Georgetown:** 1/2ac ~ 15 min to 401. Double driveway. Backs onto trees. In ground pool. Workshop with hydro. Upgrades since 1993: broadloom; windows (except gar); soffits, eaves & down spouts; roof shingles; front door; water pump & pressure tank; furnace & CAC.



**NEW**

**4470 Tucana Crt., Mississauga PH #02** Just North of Sq. 1. Incredible views to E, N & W. Opulent & immaculate. ~ 2211sq.ft. with 3 bdrms (1 converted to den), 3 washrooms, elegant living rm with wood burning FP, large formal dining rm, huge eat-in kitchen, fabulous Mbr & ensuite laundry. \$295,000



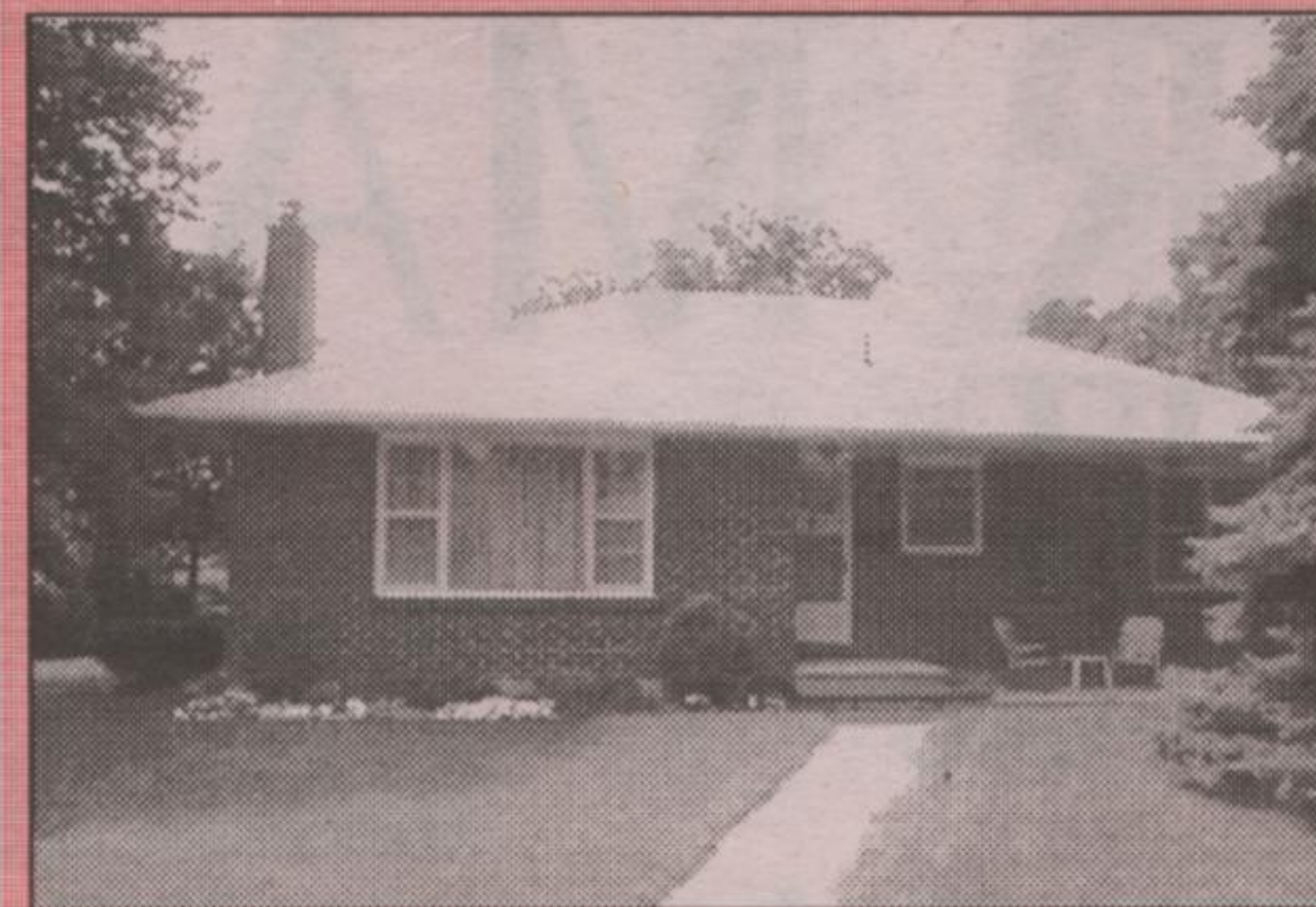
**NEW**

**32 Ewing St., Georgetown.** Renovated 2(was 3) + 1bdrm, 2 washrm home with bsmt apartmt. New hydro panel, outside doors, some windows, carpet in apt, floor in kit, ceramic floors in foyer & WR. Freshly painted walls & ceilings. Hi-eff nat gas furnace. **Huge ravine lot.** New shed. Parking for 3 cars. \$183,800.



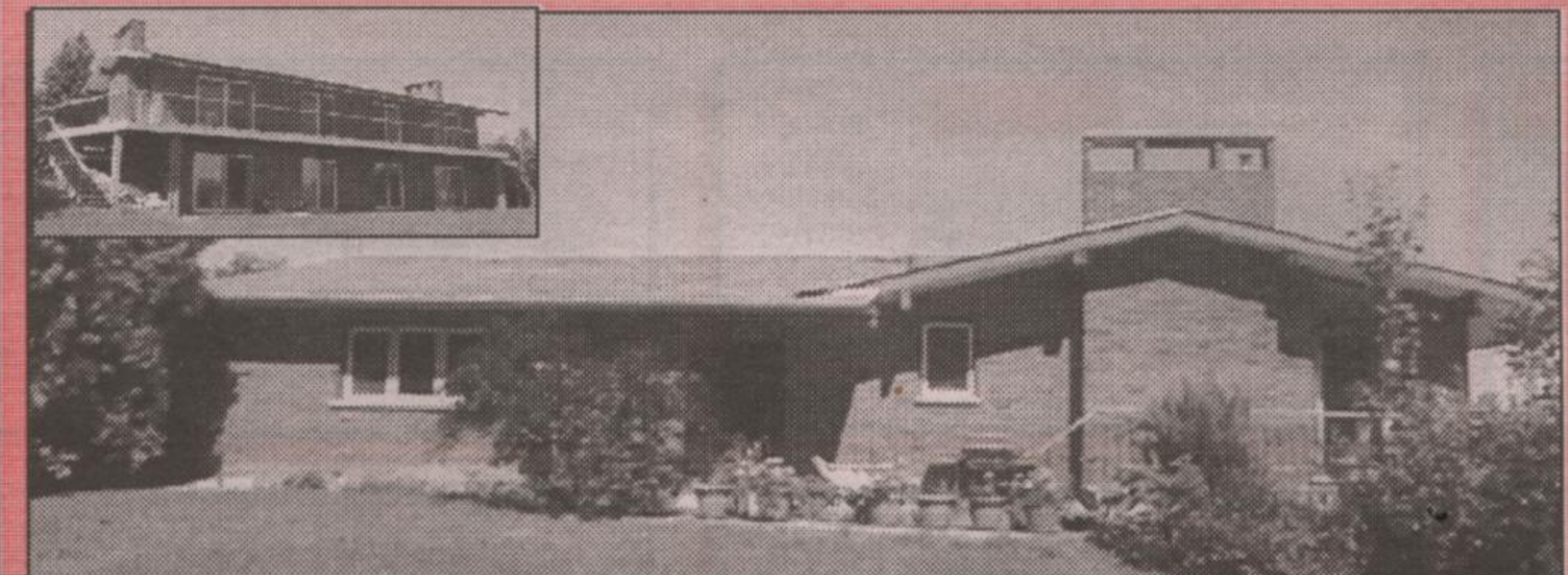
**NEW**

**65 Shaver St., Etobicoke.** N of Dundas between Kipling & 427. Well maintained 3 bdrms, 2 WRs & fin rec. rm. One car detached garage. On 50 x 150' lot next to park with 3 tennis courts & play area for younger children. Upgraded: hrdwd floors, kitchen, furnace, windows, shingles. Close to all amenities. \$254,900



**PARK AREA**

Steps to Fairgrounds & Remembrance Park  
Spotless,  
3 Bedroom Bungalow  
Finished Basement  
Stone Fireplace  
Large 57 x 135 ft. Lot  
Detached Garage  
Fall Possession  
Asking - \$219,900



**EXECUTIVE BUNGALOW**

- Horse Lover's Dream • 3,000 sq. ft. • Magnificent View • 33-1/2 Rolling Acres
- 8 Walkouts • 3 Fireplaces • 5 Pc. Ensuite Bath With Jacuzzi Tub
- Main Floor Laundry with 2 Pc. Washroom
- Main Floor Den • Formal Dining Room • Open Kitchen - Family Room
- Double Entry Doors • Two Car Garage
- Paved Rd. 5 Minutes to GO Train, 10 Min to 401
- Priced at \$549,900



**FRED HARRISON\***

\*Sales Rep.

(905) 873-6218 (905) 454-1100

Visit us at <http://www.geocities.com/eureka/gold/4654>



**PROFESSIONAL REALTY INC.**

**GREAT VALUE IN FAMILY HOME**



**ASSUMABLE 4 YEAR MORTGAGE**



Multi-tenanted industrial building for sale as investment. Income over \$65,000 net.

**INDUSTRIAL SPACE FOR LEASE**

Available Immediately  
2000 sq. ft. with drive in, \$800 month.  
3000 sq. ft. with dock level, \$1000 month. Exclusive. Call John\*.

**BUSINESS FOR SALE**

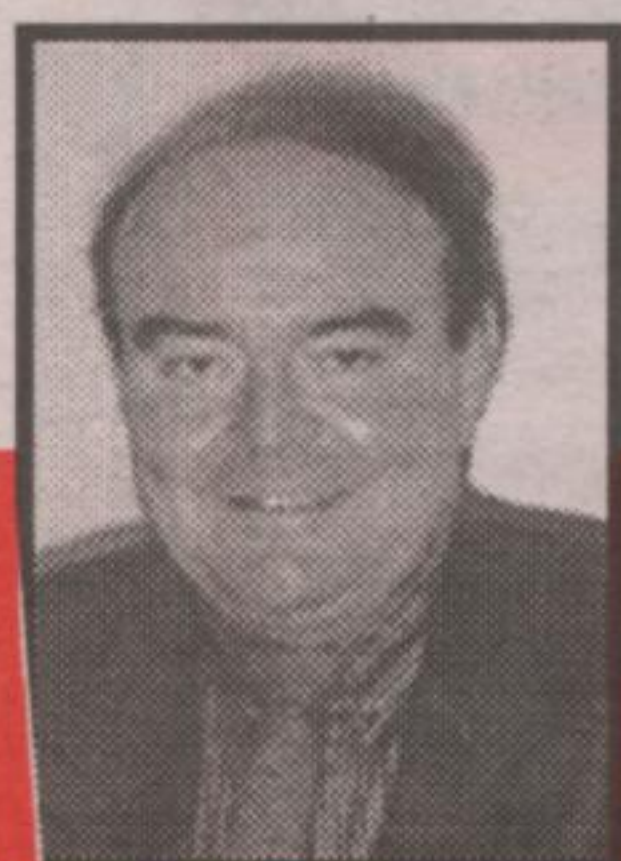
Commercial residential cleaning business. Long list of chattels and equipment. Operating for 10 years. Many repeat customers. Priced Reduced \$54,900. Call John\*.

**VACANT INDUSTRIAL LAND FOR SALE**

10 minutes to 401 Hwy. 25 frontage. Parcels from 5 ac. to 80 ac. \$50,000 per acre. Exclusive. Call John\*.

**SUPER BUY**

95' X 132' vacant commercial/residential lot for sale. Hwy. #7 frontage. Great investment. Retail on main floor, residential on second floor. Priced to sell ONLY \$85,000.



**BLUE SPRINGS REALTY (Halton) CORP.**

**JOHN BARTLETT** IEV Representative  
RESIDENTIAL AND COMMERCIAL

(519) 853-2086 1-888-833-1945



**ROCKWOOD \$164,900**



66x132 Lot 16 x 27 garage quiet street central locale

**Main Street**



Commercial over 2000 sq. ft. sep. apartment income hoist in shop \$240,000

Guelph-Close to U of G & Mall



3 bdrm, gas, 2 baths, never rented, new roof, rec rm with gas FP \$174,900

**BUILDING LOTS**

**Rockwood and Area**

\$66,900 - 120 X 150 triangular residential or commercial - town services

\$69,900 - 2.4 acres to be serviced with town water and sewer, fronts on small stream and overlooks old mill pond.

\$134,900 - Estate Lot without restrictions, 200x500 approx. with stream at back and well is installed 4 miles SE of Rockwood

\$139,900 - Estate Lot with pond and ravine type bank for fab. walkout basement, 200x500 (2 acres) approx. 15 minutes to Milton

**Puslinch \$329,000**



under construction 14 acres 15 min to 401 at Campbellville