



ELIZABETH DOELL*
Sales Rep.



(905)

877-5165

Local/Toronto

Johnson Associates
HALTON LTD., REALTOR

www.haltonhills.com/elizabethdoell

GORGEOUS HOME IN SOUTH GEORGETOWN



Over 2600 sq. ft. on a lovely crescent built by Country Glen. Four bedroom family home has huge kitchen, large family room, C.A.C., intercom, security, beautifully landscaped. 10+++++. Call **Elizabeth Doell*** today for your appointment. 00-520-30

IS THIS YOUR DREAM HOME?



Let Peter Zions Construction build for you on one of two 1 acre lots in glorious Glen Williams. Prices start at \$439,000. Call **Elizabeth Doell*** today. These will not last! 00-484-30

3 FABULOUS 1 ACRE LOTS IN THE GLEN

Overlooking the Credit Valley, town water and gas. Only \$169,900. Call **Elizabeth Doell***.

STUNNING EXECUTIVE BEAUTY



Over an acre located in exclusive Turtle Lake overlooking the 7th hole. This home is over 4000 square feet, featuring walkout level basement, huge new inground pool, hardwood and porcelain floors, 3 ensuite baths and much much more. Call **Elizabeth Doell*** today for your appointment to view this stunning home.

HERE'S YOUR CHANCE ONLY \$209,000!



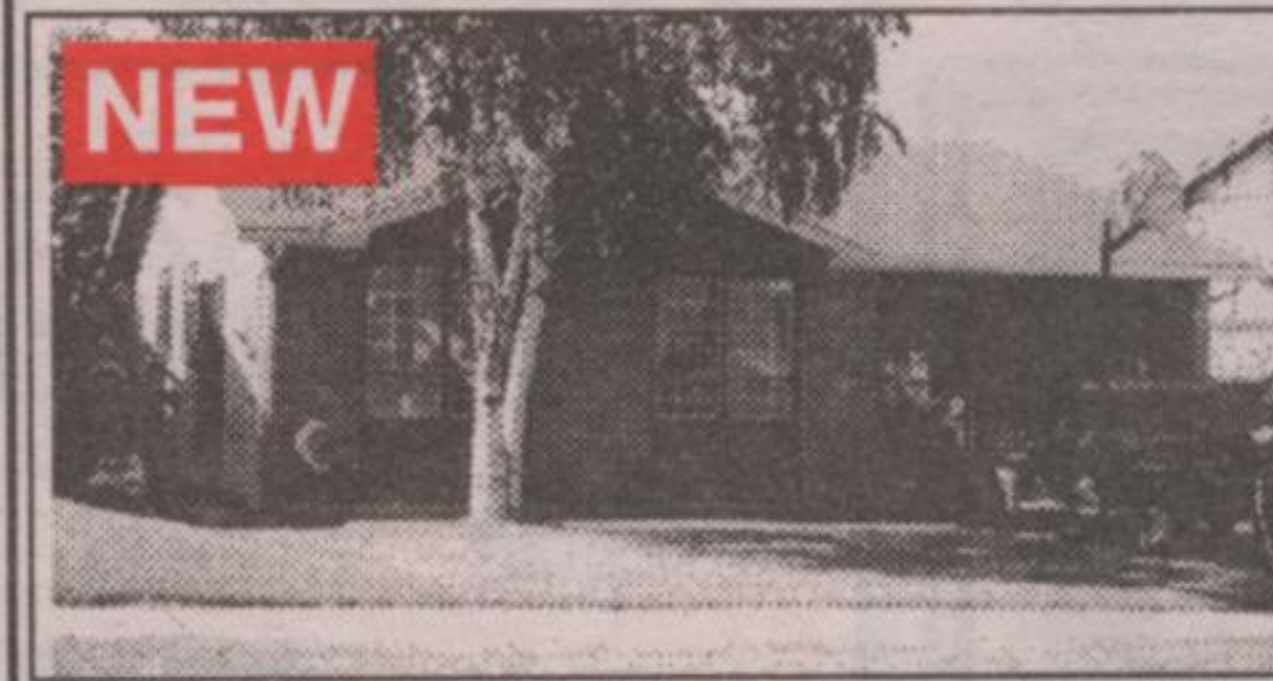
Few and far between at this price... this lovely updated home is located on a quiet crescent and has many updates including furnace, C.A.C., urethane floors, bath and more... Be the first to view this wonderful property. Call **Elizabeth Doell***. 00-524-30

COUNTRY HOME PAVED ROAD



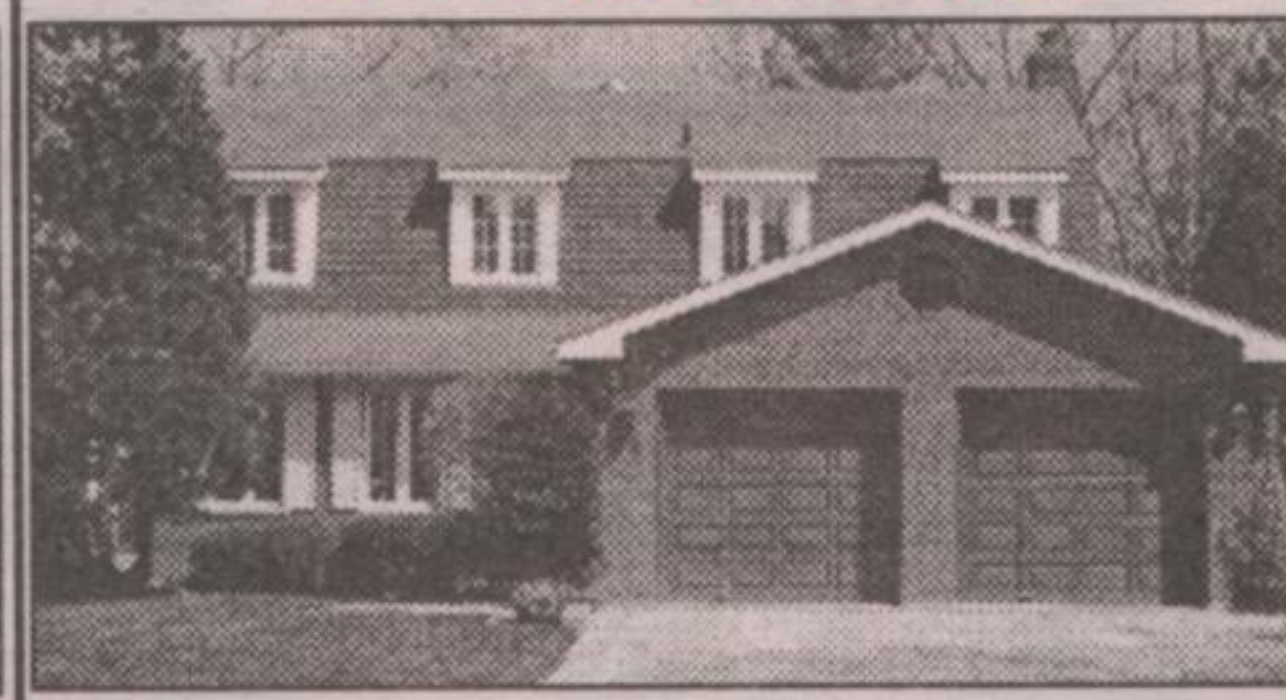
This wonderful home minutes from town comes with a full acre of land. The large living room includes a stone fireplace, fantastic country kitchen overlooks open farmland & has a sliding w/o to a large deck, huge main flr family rm which is half carpet & half pine plank flooring has access to sunroom, there's also a formal dining room, and main flr office & laundry - all this plus a separate workshop fro \$269,900. Call **Elizabeth Doell***. 00-480-91

LOVELY NEW LISTING



Great bungalow in good area walking distance to downtown, schools and lake in Acton. Wonderful walkout, finished basement, C.A.C., gas fireplace and more. Call **Elizabeth Doell*** for your appointment. 00-509-30

PARK AREA BEAUTY, 160' WOODED LOT



This exclusive custom home includes a unique landscape package including inground pool with curved stone walls & custom cabana. The gracious 4 bdrm home has new windows, FP, main flr. laundry, fin. bsmt & oversized double garage. Kit, & fam rms have w/o's to deck, overlooking the incredible park-like lot & pool...this one owner home has been lovingly maintained, has a lot "out of a fairy tale" and backs onto woods. Call **Elizabeth Doell*** to view. 00-496-30

8 ACRES IN LIMEHOUSE READY TO BUILD

Escarpment property. Long views. Ravine ready for your special home. Call **Elizabeth Doell***.

HOT HOT HOT



And the only townhouse for sale in the area. Great home. Great Buy at \$111,900. Call today before it's sold. **Elizabeth Doell***. 00-530-90



JIM AKERS**

Associate Broker

(905) **877-5165** Local/Toronto

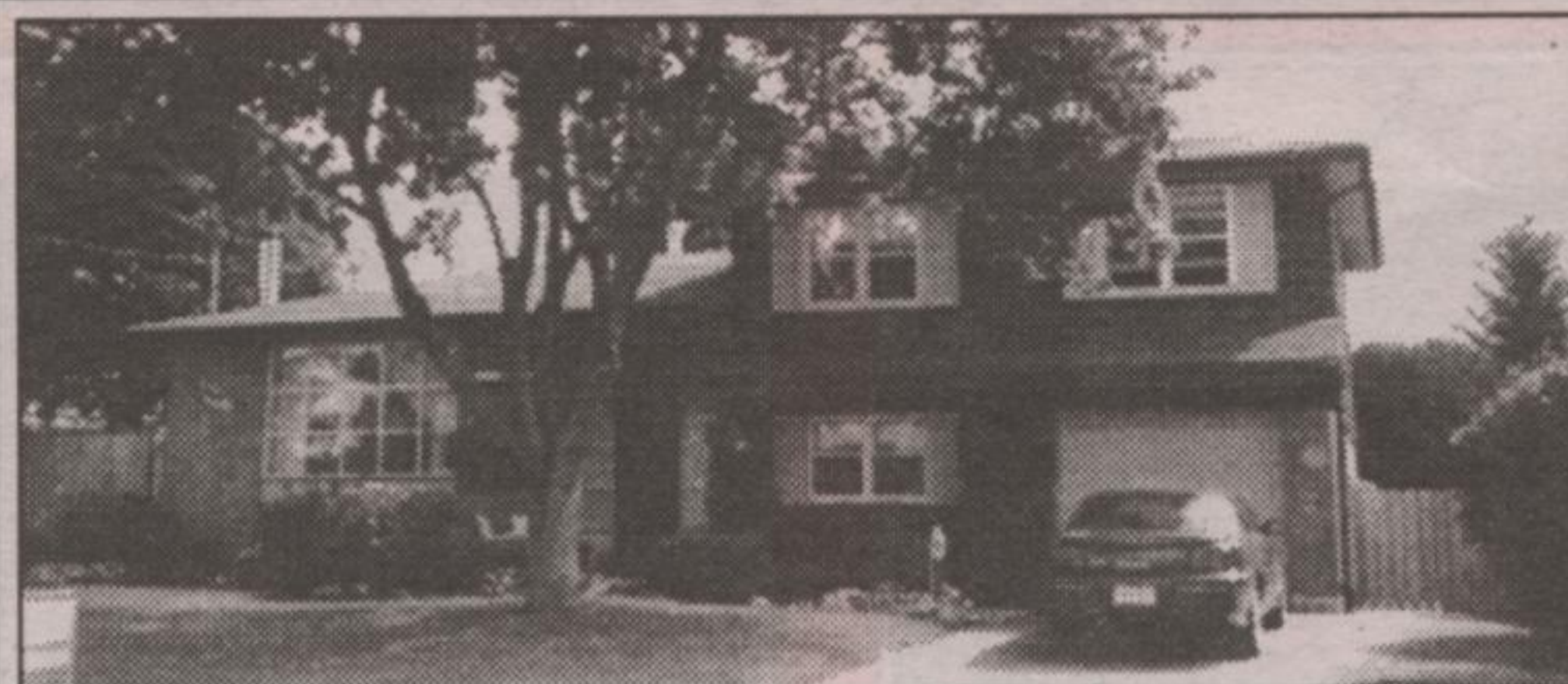
Mississauga 905-874-3040
Res. 873-6744
Erin 519-833-9714

Johnson Associates
HALTON LTD., REALTOR

A House**SOLD** name in Real Estate with over 25 years of experience to work for you

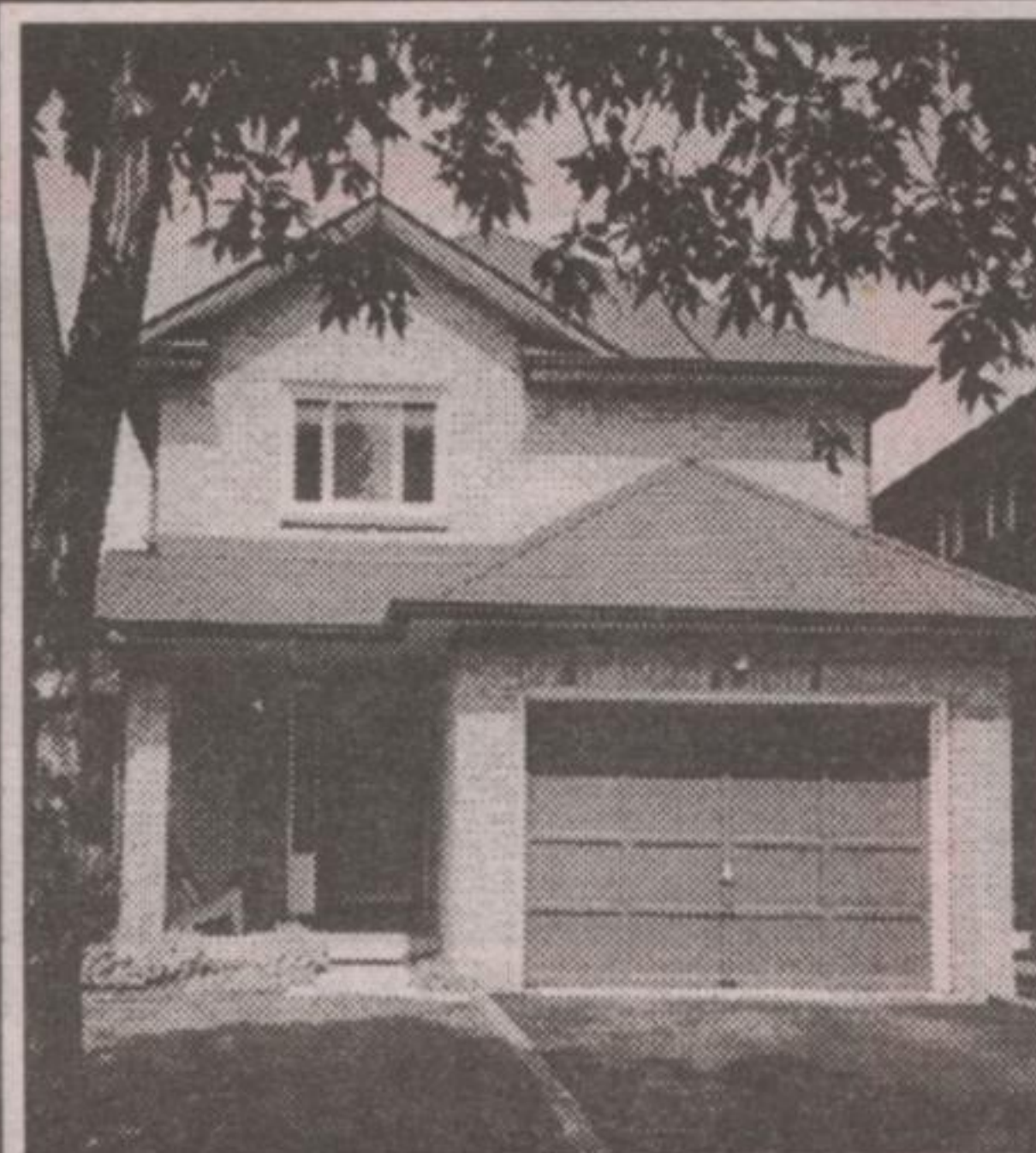
Web Site

<http://www.haltonhills.com/jimakers>



JUST LISTED!! \$229,900

Immaculate family home in quiet neighbourhood on large well manicured lot. Newer driveway, new walkway to backyard. Remodeled family room. Furnace replaced, central air. To see is a must. Call **Jim Akers***. 00-517-30



NOT A PALACE BUT IT THINKS BIG \$205,900

Backs on to the park. Brick/aluminum 2-story, quiet street. Move up accents include deck. Easy commute, private drive, fireplace, 3 BR /2-4 pc., 1-2 pce baths. A handy main-level laundry, a convenient eat-in kitchen. Centrally located on quiet street. **Jim Akers*** 905-877-5165. 00-467-19

