

**G E T  
S O L D**



**BRENDA  
PAYTON**

\*Sales Representative



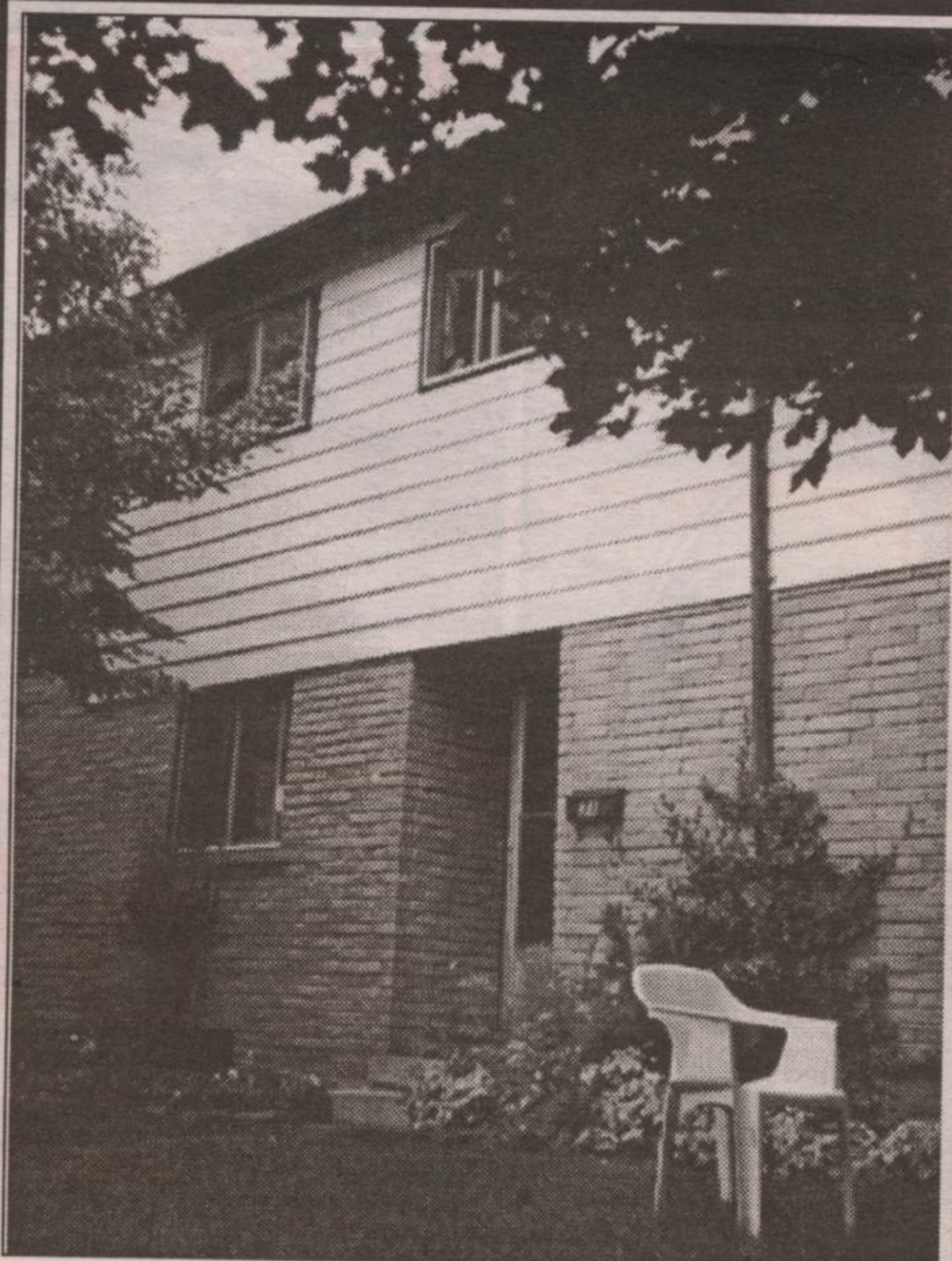
12 YR. MEMBER

call  
**877-5165**

Call for a  
Free Complete and  
Accurate Market  
Analysis!

Johnson Associates

HALTON LTD., REALTOR

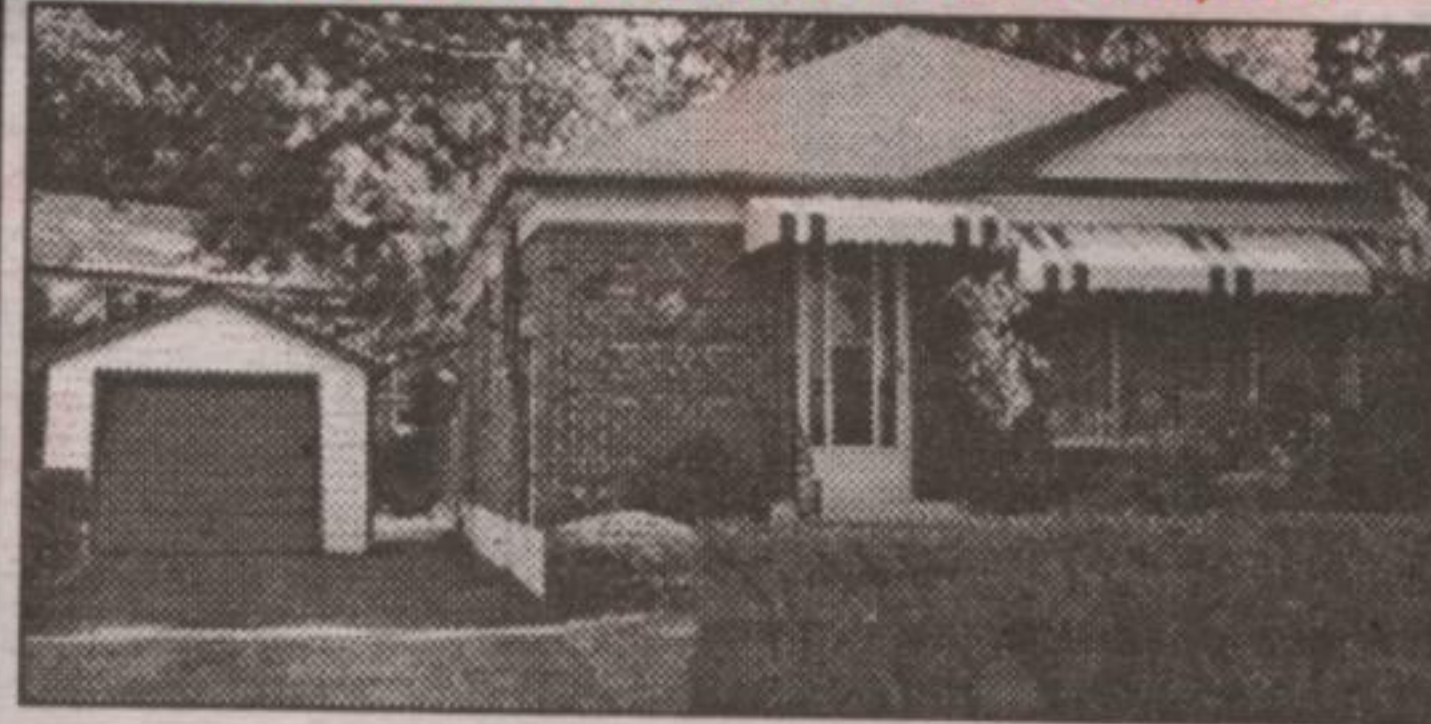


**TREED PRIVACY**

Sharp 3 bedroom townhome with eat-in kitchen, separate dining room & living room combined with efficient gas fireplace & walkout to private rear yard!!

00-474-30

**PARK AREA BUNGALOW \$169,900**



This solid brick bungalow with a detached garage, has hardwood floors, sliding walkout to a deck, high efficiency gas furnace & hot water tank, central air & even a garage. Make an offer. Call Elizabeth Doell\* today.

**PARK AREA BEAUTY, 160' WOODED LOT**



This exclusive custom home includes a unique landscape package including inground pool with curved stone walls & custom cabana. The gracious 4 bdrm home has new windows, FP, main flr. laundry, fin. bsmt & oversized double garage. Kit. & fam rms have w/o's to deck, overlooking the incredible park-like lot & pool...this one owner home has been lovingly maintained, has a lot "out of a fairy tale" and backs onto woods. Call Elizabeth Doell\* to view. 00-496-30

**WONDERFUL COUNTRY BUNGALOW**



On the edge of town! Only minutes from Georgetown, this gorgeous 1.7 acre property is sure to meet all your needs. Extensively renovated over the past 7 years, this home has wonderful quality features including kitchen, 2 full baths, skylights, flooring, shingles, windows, C.A.C. and much more. Call today before it's sold!

**IS THIS YOUR DREAM HOME?**



Let Peter Zions Construction build for you on one of two 1 acre lots in glorious Glen Williams. Prices start at \$439,000. Call Elizabeth Doell\* today. These will not last!

**WOW!**

**REDUCED**



Fantastic family home in Georgetown South. Now is your opportunity to buy in this great new development. Stunning home - beautifully manicured lot. Only \$254,900.00. Call Elizabeth Doell\* today. 00-492-30

**STUNNING EXECUTIVE BEAUTY**



Over an acre located in exclusive Turtle Lake overlooking the 7th hole. This home is over 4000 square feet, featuring walkout level basement, huge new inground pool, hardwood and porcelain floors, 3 ensuite baths and much much more. Call Elizabeth Doell\* today for your appointment to view this stunning home.



**ELIZABETH DOELL\*** Sales Rep.

(905) 877-5165 Local/Toronto



Johnson Associates

HALTON LTD., REALTOR

www.haltonhills.com/elizabethdoell

**NEW LISTING**



**4 BEDROOM BEAUTY IN GEORGETOWN SOUTH**

Approximately 2000 sq. ft. of totally upgraded living space plus professionally landscaped lot with underground sprinkler system. A pleasure to show at \$289,900.

**NEW LISTING**



EXT. 4049

**GEORGETOWN  
ESTATES  
LUXURY  
TOWNMANOR**

By the Daniels - 1653 sq. ft.,  
Absolutely beautiful inside.  
\$234,900.



**109 MOUNTAINVIEW ROAD**

All of the major things are done...windows, roof, furnace, C/A. This home is immaculate. Fully finished lower level. \$219,900.

EXT. 4048



The 9 hole miniature course. The 18x38 inground heated pool, the springfed pond all on 2.1 acres of beautifully landscaped grounds are yours when you purchase this lovely home. Plus indoor spa with sauna, shower and washroom. Minutes from Hwy. #7 on the fifth line (just north of the Erin/Halton Townline). This home is much larger than it appears from the road and must be seen to be truly appreciated. You will be glad you called on this one!!! \$379,900.

EXT. 4052



**2788 WANLESS DRIVE**

Just off Winston Churchill before Mayfield Road. A home to be proud of. Vendors leaving the area. \$369,900.



**JESSIE JACOBS\***  
Sales Rep.



Please call my  
toll free information line  
**1-800-660-1328**  
and enter the extension number.  
**YOU WILL BE GLAD YOU DID**  
Web Site:  
<http://www.haltonhills.com/jessiejacobs>

(905) **877-5165**

Local/Toronto

Johnson Associates

HALTON LTD., REALTOR