

Braking system faulty

Halton school buses not affected by recall

Halton school buses are not affected by the recall of buses with faulty anti-lock braking systems.

"Our contractors have confirmed that there are no buses transporting Halton District School Board students affected by the recall," said Wayne McNally, superintendent of business services for the Halton District School Board.

"In fact, none of the buses used in Halton have had this type of braking system."

The HDSB and the Halton Catholic District School Board have an integrated transportation system which contracts its transportation to Laidlaw Transit, Attridge Transportation Inc., Stock Transportation Ltd. and Tyler Transport.

Thomas Built Buses and its parent

'None of the buses used in Halton have had this type of braking system.'

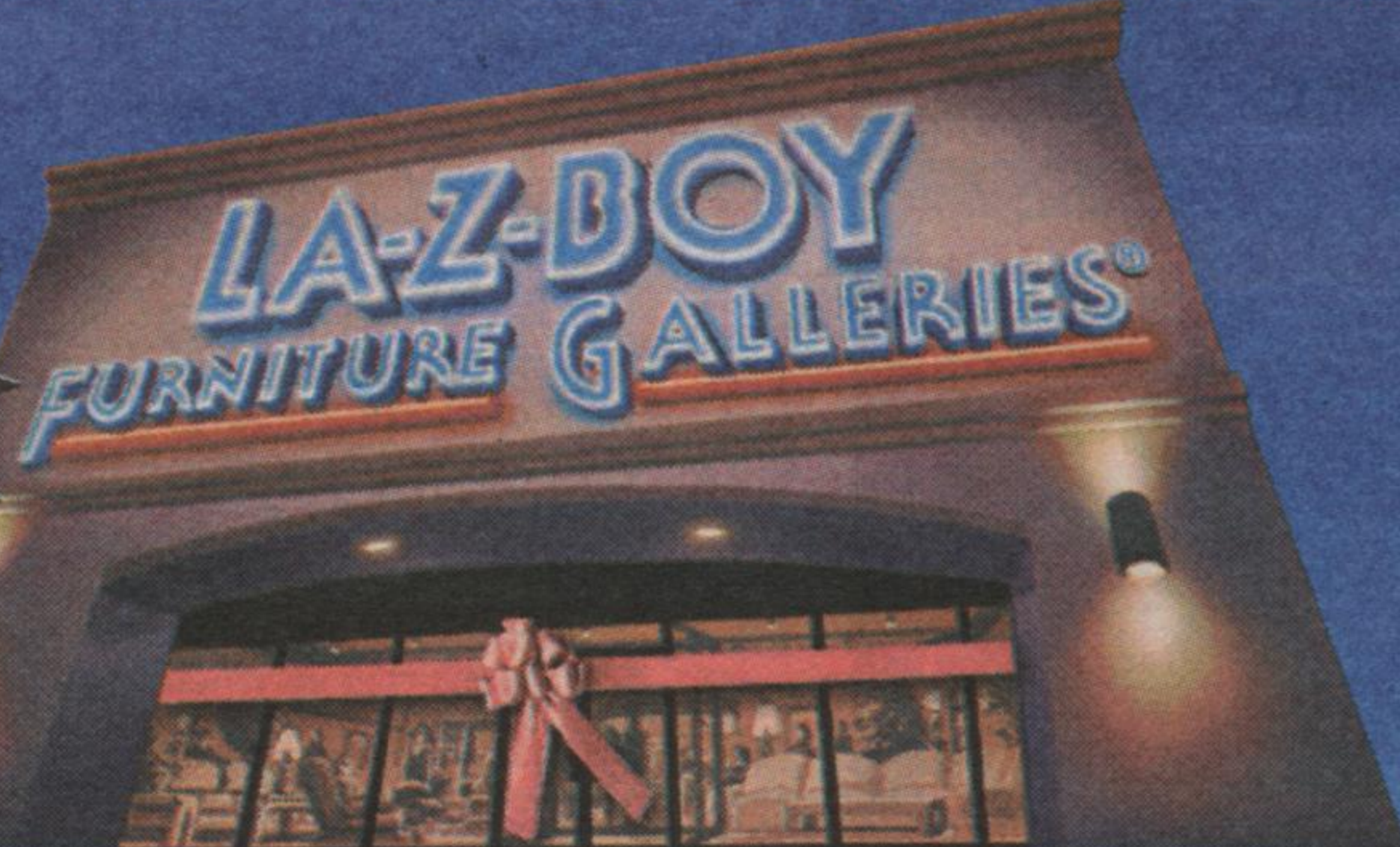
— Superintendent Wayne McNally

company, Freightliner Corp., announced late last week that almost 6,000 of its buses built between March 1998 and last month may have faulty anti-lock braking systems which can cause buses to temporarily lose their braking ability for up to three seconds when they are traveling slower than 35 km/h.

McNally said Bendix, the brake manufacturer, has indicated the defect is in faulty ABS sensor wires and as many as 40,000 buses across the continent may be affected.

FINAL COUNTDOWN

of our GRAND OPENING SALE PRICES



LA-Z-BOY® Recliners from **\$399**



LA-Z-BOY® Recliners from **\$599**



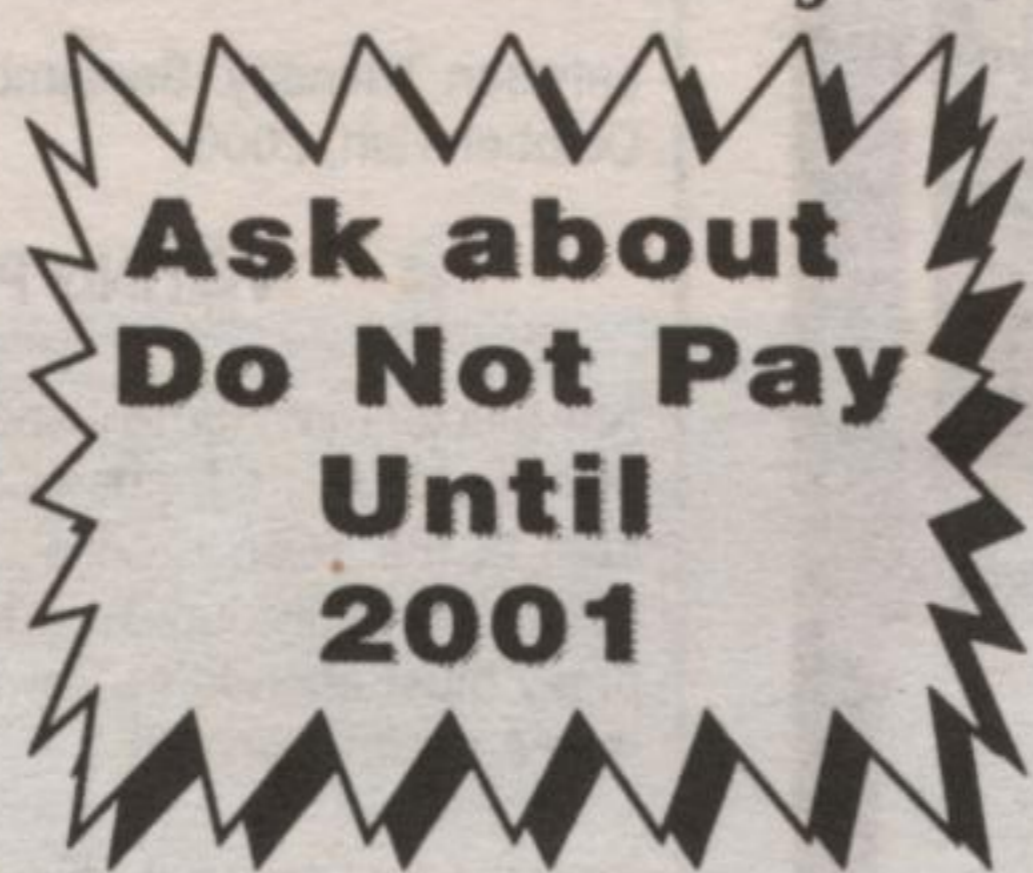
LA-Z-BOY® Recliners from **\$769**



LA-Z-BOY® Leather Recliners from **\$999**



LA-Z-BOY® Stationary Sofas from **\$899**

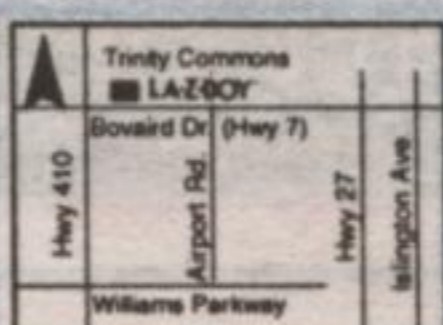


LA-Z-BOY® Reclining Sofas from **\$1399**

Plus

- Every Sofa
- Every Reclining Sofa
- Every Sectional Sofa
- Every Leather Sofa
- Every Lamp
- Every Picture & Accessory
- Every Coffee & End Table

ON SALE



BRAMPTON
70 Great Lakes Drive
(905) 789-5800

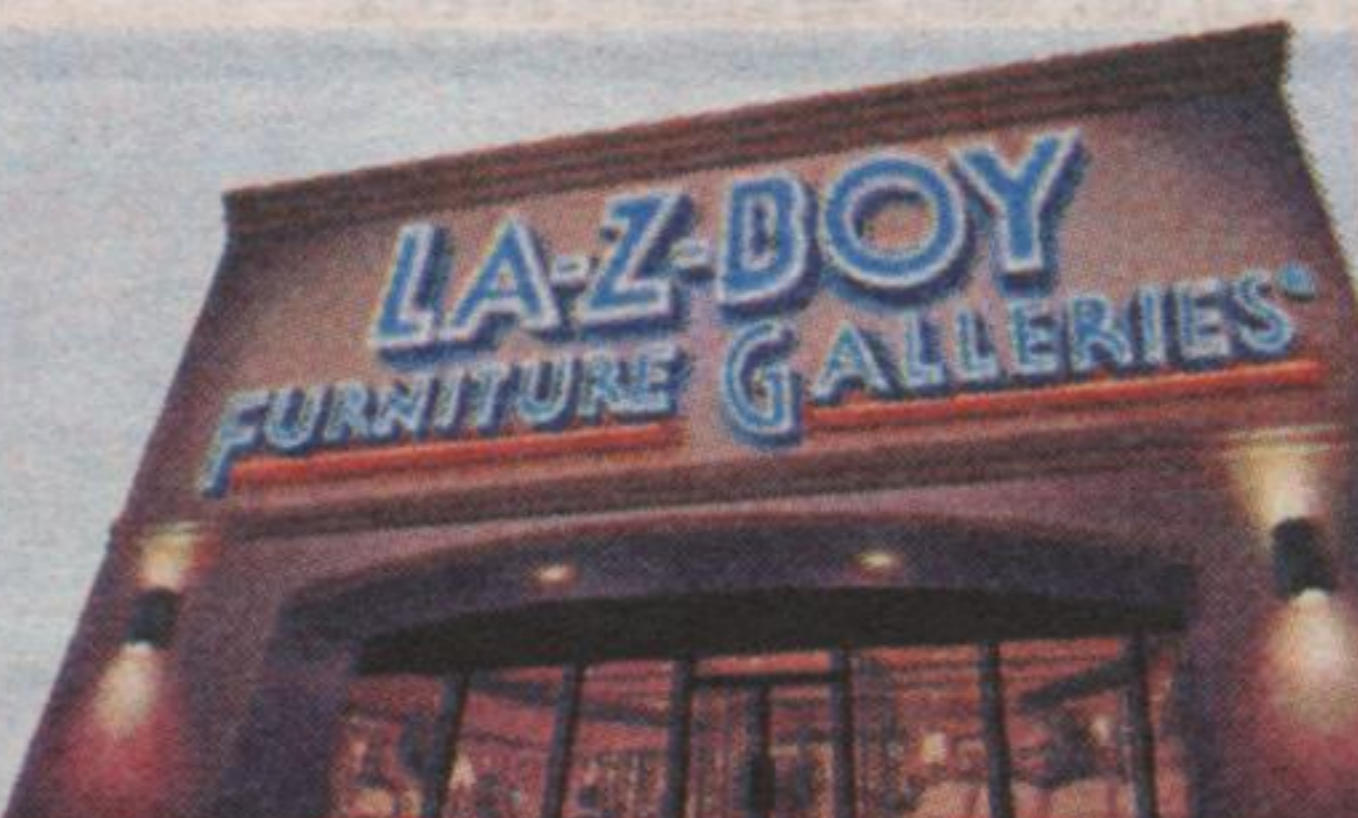


MISSISSAUGA
5915 Rodeo Drive
(905) 568-2211

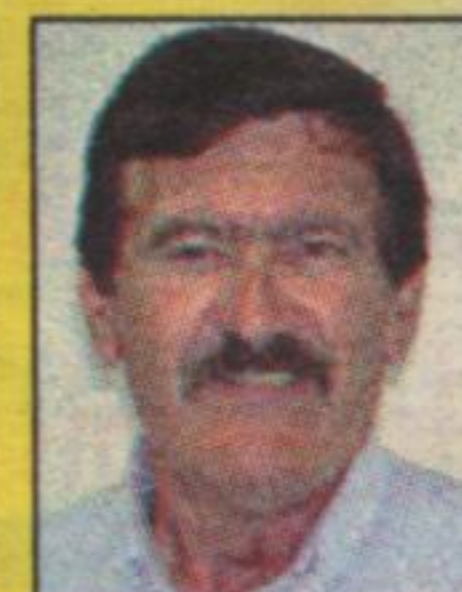
Mon - Fri 10 AM - 9 PM, Sat. 10 AM - 6 PM, Sun 11 PM - 5 PM

NO DOWN PAYMENT, NO INTEREST FOR 12 MONTHS. WE MAKE THE ROOMS THAT MAKE A HOME.®

*No Down Payment does not apply to custom orders.



203 GUELPH ST. 873-1818



TOM KELLY



CHUCK EDMONDS

Help we're Overstocked on Trade-Ins Bring your own Bondo Boards.



\$995.
NEARLY COST

1987 THUNDERBIRD
3.8 v6, Loaded



\$995.
NEARLY COST

1992 TOPAZ
4 cyl., Auto



\$1195.
NEARLY COST

1990 MAZDA 929
V6 auto, Loaded



\$995.
NEARLY COST

1986 CARAVAN
7 Passenger, Nice Shape



\$995.
NEARLY COST

1989 SUNBIRD LE
4 cyl., Auto, Camera Shy



\$995.
NEARLY COST

1991 TAURUS LX
V6, Loaded



REDUCED
NEARLY COST

1984 JETTA
4 cyl., Auto

TEST DRIVES AVAILABLE
Are you mechanically inclined?
Do you know a "wrench" from a "screwdriver"?
THIS IS THE DEAL FOR YOU
"NO REASONABLE OFFER REFUSED!"

\$ CALL AND SAVE \$