

Say You Saw It In . . .

The Independent & Free Press Real Estate Digest

RE/MAX

360 Guelph Street, Georgetown

BLUE SPRINGS REALTY (Halton) CORP.



DONNA RAE*

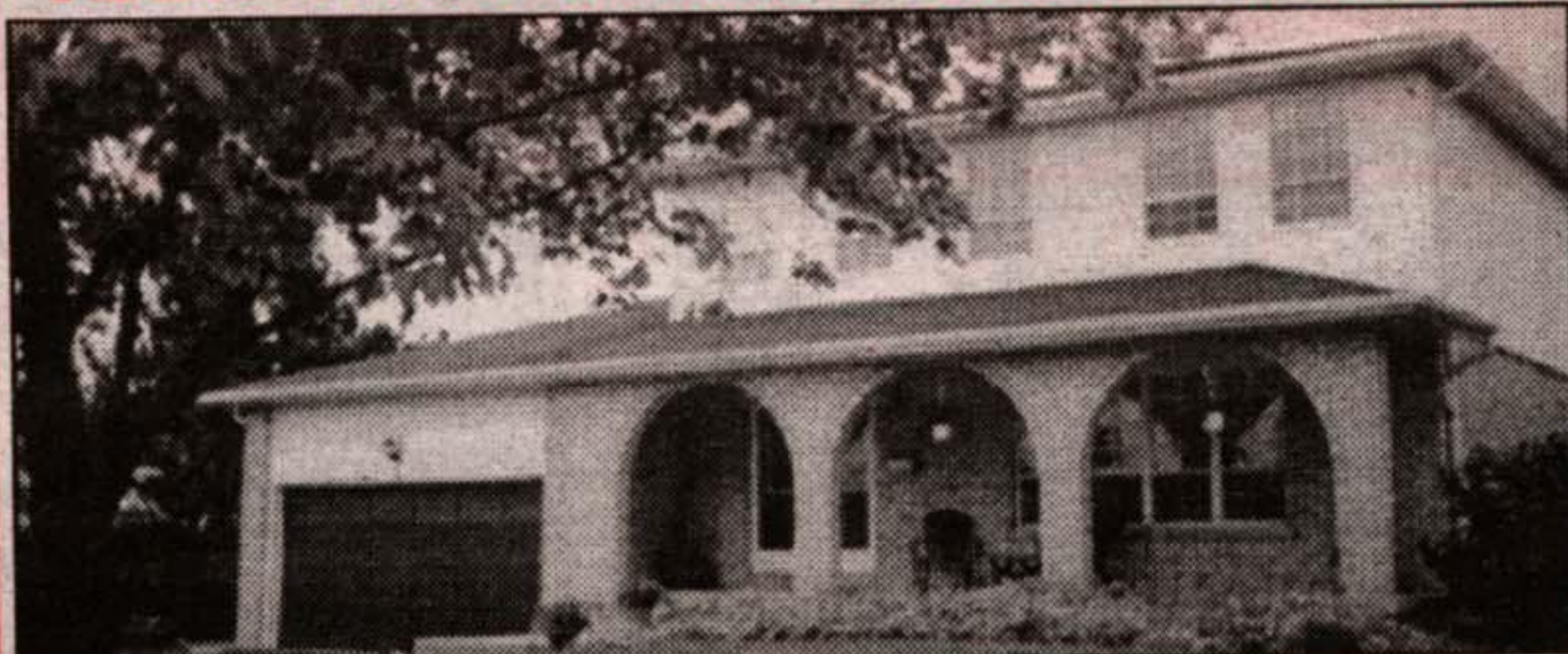
*Sales Rep.

877-5211

OPEN HOUSE

Sunday
November 28th
1-4 p.m.
7 Hillside Dr.
Georgetown
(follow signs)

MARYWOOD MEADOWS SUBDIVISION



Absolutely gorgeous 4 bedroom 3 washroom home in downtown park location. Walk to downtown, library and major park. Large living room and separate formal dining room. Nicely decorated and very bright eat-in kitchen. Four nice size bedrooms as well as a master bedroom ensuite. Family room with patio door walkout and Berber broadloom. Be sure not to miss this one. \$269,900.

\$159,900



For this truly gorgeous 3 bedroom townhouse backing onto the ravine. Terrace style balcony off the kitchen is great for relaxing as well as a basement patio door walkout. Master bedroom boasts an ensuite as well as a walk-in closet and a bay window. Decorated beautifully so move right in. Call Donna Rae*.

PARK DISTRICT - \$172,900



This home will definitely surprise you at the size once you enter the front door. Large living room as well as a large formal diningroom. Country size eat-in kitchen boasting lots of cupboards, a skylight and French door. Main floor laundry and washroom. Patio walkout as well as side door walkout to porch (utility room) to side yard. 3 bedrooms and main washroom. Shed with hydro, all fenced yard and deck. This home shows to perfection. Downtown park location. Walk to schools, 2 major parks, library, cultural center.

REXWAY BUNGALOW



4 bedroom bungalow on desirable street. Large eat-in kitchen. Finished rec room in basement. Hardwood floors throughout including under broadloom. Master bedroom has an ensuite. Central air and electronic air cleaner. Listed at \$214,900. Call Donna Rae* for a personal viewing.

"My business is helping you feel right at home."

KATHLEEN "HAS THE BUG" TO SELL!



Kathleen Walsh* *Sales Rep.

877-5211 or **1-800-834-5516**

RE/MAX BLUE SPRINGS REALTY (HALTON) CORP.

How much is your home worth in today's market? Call Kathleen Walsh* for a **FREE MARKET EVALUATION.**

Not intended to solicit property already listed.

A NEW HOME FOR THE MILLENIUM



Immaculate end unit with finished family room in basement, extra kitchen cupboards & counter space, central air, gas fireplace, w/o from kitchen to private patio & perennial gardens.

LUXURIOUS CONDO - HALLMARK PLACE



- 1445 sq. ft. spacious 2 bedroom condo
- Exclusive Building - only 2 suites per floor
- large solarium
- roughed in central vac

SOLD