



Look
in
The
Real
Estate
Digest
to
find
your
tree
house.

\$299,900



OPEN HOUSE
SUN., NOV. 21ST. 2-4 P.M. - 2 HEPBURN CR., GEORGETOWN
DIRECTIONS: Mountainview/Argyle/Hepburn
Your home will be your castle with this elegant and luxurious 2640 sq. ft. brick and stone "Waterford" model, built by Fernbrook. Loc. on a quiet cres. In a prestigious area of Georgetown. Designed for gracious entertaining with sep. din. rm. & liv. rm., open concept fam. rm. & kit. with sunny breakfast nook, amazing mstr. bdrm. with circular sitting rm. & expansive 5 pce. ensuite. Many upgrades, such as ceramics, strip oak flooring, 40 oz. carpet, oak railings, 2 sided gas fireplace and more. A must see because you deserve the best!!!



SHIRLEY ANDERSON
Sales Representative **454-1100**
Professional Realty Inc.



Mary Maan*
*Sales Rep.

Johnson Associates

HALTON LTD., REALTOR



877-5165

Tor. 874-3040



Tony Maan*
*Sales Rep.

Exposing your property to over 20,000 agents through the Toronto Real Estate Board



**FUTURE INVESTMENT OR
PRESENT FULFILLMENT
OF YOUR DREAM**

Two 5 acres building parcels, near the Village of Dundalk (halfway to the cottage country). Other homes in the neighbourhood built on similar lots, build now or invest for later. Only \$31,500. each.



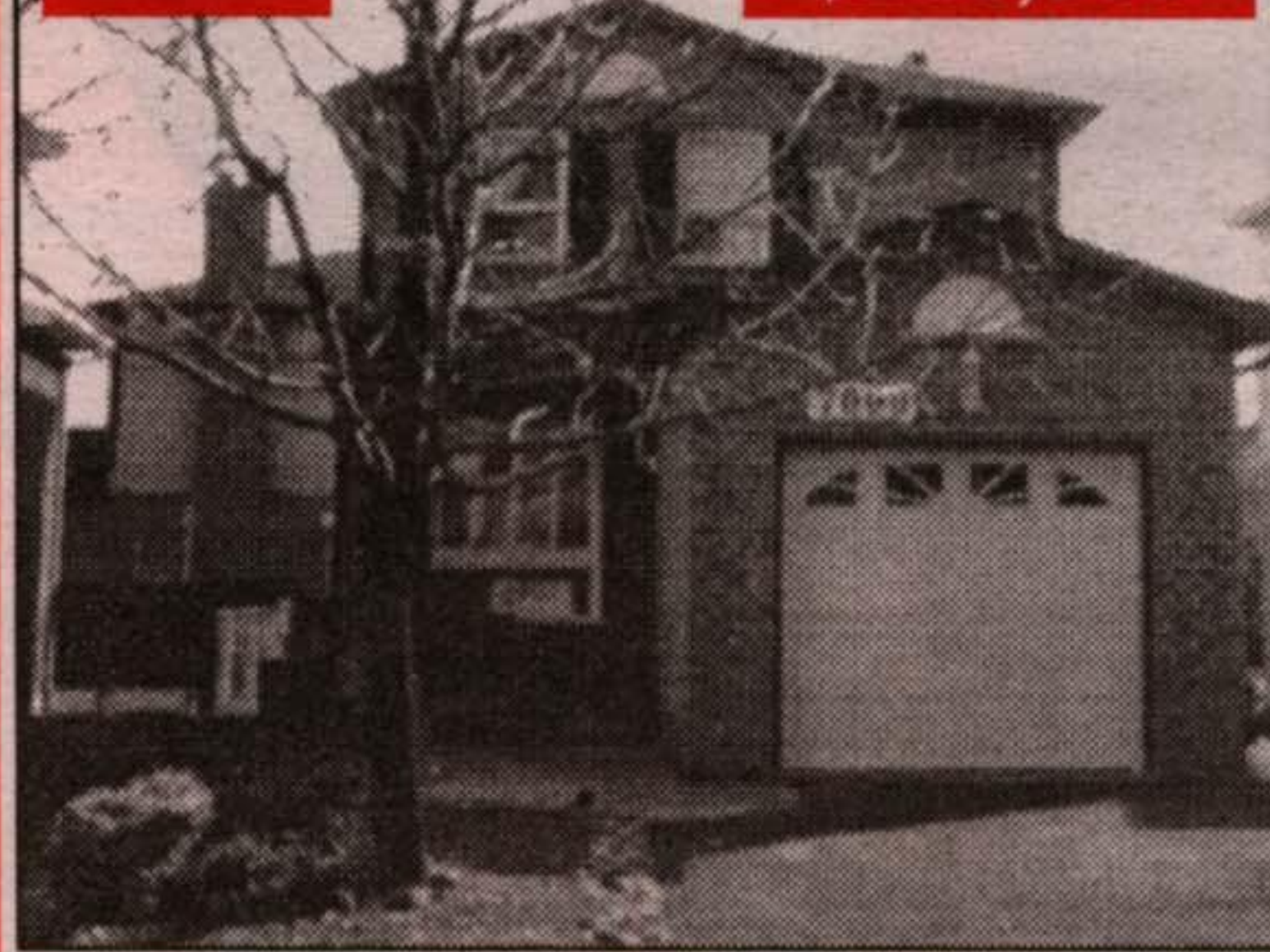
**MIKE
ADAMS***

*Sales= Rep.

**WHEN YOU THINK
"REAL ESTATE"
THINK MIKE ADAMS*!**

NEW

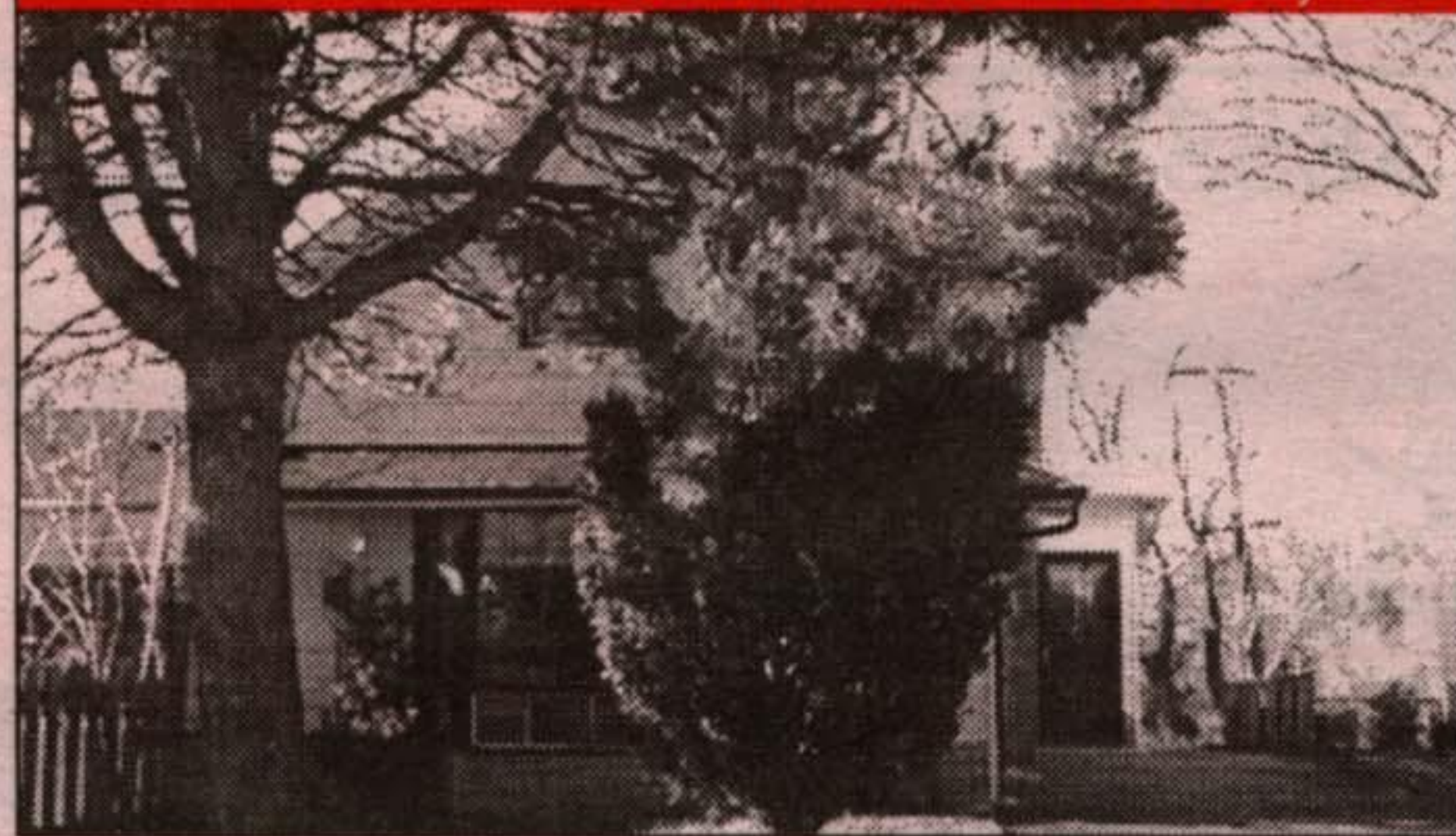
\$219,000



UPGRADES GALORE!

Garage: New door, loft for storage, entry from garage into house. New downstairs bathroom. Mirrored closet doors, ceramic floor, new light fixtures in entrance hallway. Custom built-in kitchen with new cabinets, countertop, dishwasher, light fixtures and corner pantry. LR & DR has oak plank flooring. Bedrooms have oak laminate flooring & new light fixtures. Upstairs bathroom has soaker bath tub, ceramics and marble. Double driveway, patent concrete walkway and porch, landscaping, huge patent concrete rear patio with a step down into yard. Recently installed air conditioning. For more information call Mike*.

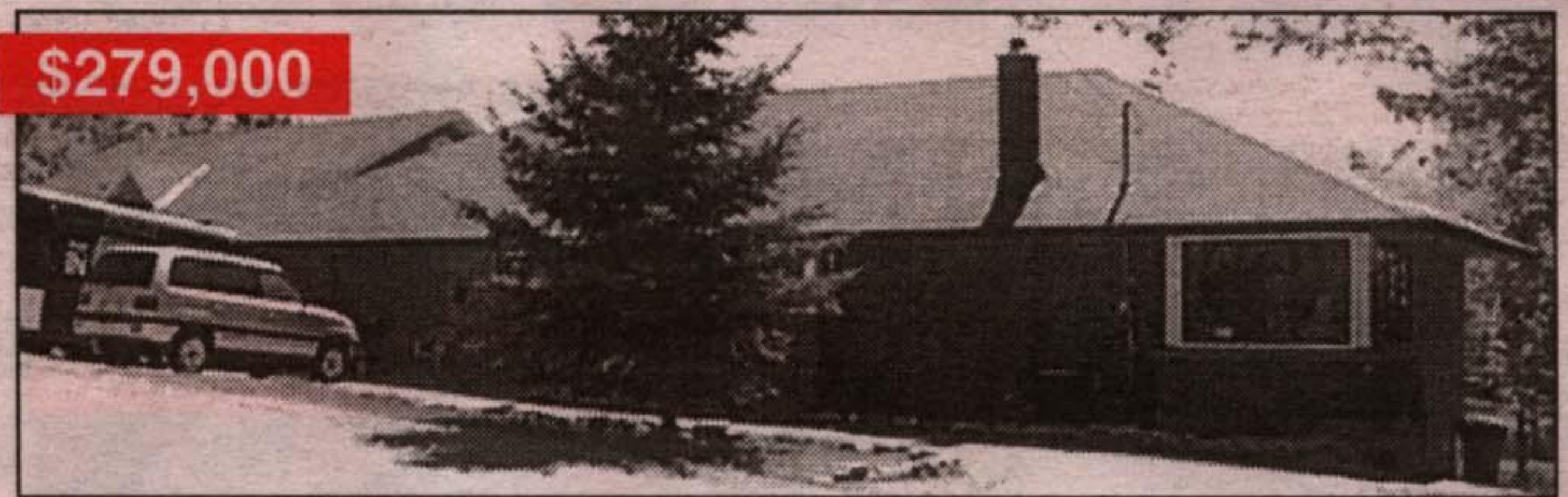
OPEN HOUSE SUNDAY, 1-3 P.M.
16 Riverview Cres., G'town



**GREAT STARTER
HOME
PRICE REDUCED
TO SELL!! \$149,900**

Come to the OPEN HOUSE on SUNDAY and check out this home. IT'S BIGGER THAN IT LOOKS! Good location, quiet street, close to schools, etc. Large principal rooms, tons of closet space, walkout basement, large deck. Mature trees.

\$279,000



GLEN WILLIAMS

Country character, potential plus this is a must see. Your back yard is like a private forest just under 1 acre, the lot is gorgeous. Artistic workshop walking distance away. Just minutes to primary school. Credit River. Tons of charm & potential. Large principal rooms. Basement is finished with walkout to pool.

NEW PRICE

\$100,000



STARTER HOME IN ERIN

Huge treed lot close to Mini Lake. Huge back lot with some out buildings. Great potential here. Very quiet area. This is not a mobile home.



NEED YOUR RESULTS GUARANTEED?

I am applying for the job of selling your home.

Resumé on request.



Definitely intended to solicit homeowners, but not those homes currently listed for sale.

RE/MAX
BLUE SPRINGS REALTY
(HALTON) CORP.

877-5211