

# DRIVE IN THE NEW YEAR LEASE EVENT

## YOUR CHOICE \$299

**TAXES INCLUDED**

### 2000 CHRYSLER NEON

*"The all-new completely redesigned 2000 Chrysler Neon."*

- 2.0-litre 132 HP engine •4 wheel fully independent suspension •Tilt
- Automatic transmission
- Next-Generation dual air bags
- Air conditioning •New 5 year/100,000 km powertrain warranty •AM/FM stereo cassette with CD changer control & 6 speakers
- Var. int. wipers •3 front cup holders

### NEON 22D

LEASE FINANCE INTEREST RATE 2%

MONTHLY PAYMENT 48 months	\$299	\$274	\$249
FREIGHT	\$675	\$675	\$675
SECURITY DEPOSIT	\$0	\$0	\$0
DOWN PAYMENT OR EQUIVALENT TRADE	\$0	\$1,000	\$2,000
FIRST PAYMENT DUE ON DELIVERY	\$1,161	\$2,287	\$3,411

**0%**

**PURCHASE FINANCING†  
UP TO 48 MONTHS**

**Security Deposit Waived**



### 2000 CHRYSLER CIRRUS LX

*"Cab forward styling at a very civilized price"*

- 2.4-litre 16 valve engine •DOHC 150 HP
- Automatic Transmission •Next-Generation dual air bags •AM/FM stereo cassette •6 speaker •Cruise •Tilt •15" wheels •Air Conditioning •Power windows, locks, mirrors
- Side-door impact beams

### CIRRUS 24B

LEASE FINANCE INTEREST RATE 4.3%

MONTHLY PAYMENT 36 months	\$299	\$347	\$398
FREIGHT	\$715	\$715	\$715
SECURITY DEPOSIT	\$300	\$350	\$400
DOWN PAYMENT OR EQUIVALENT TRADE	\$2,915	\$1,500	\$0
FIRST PAYMENT DUE ON DELIVERY	\$4,903	\$3,375	\$1,751



### 2000 CHRYSLER INTREPID

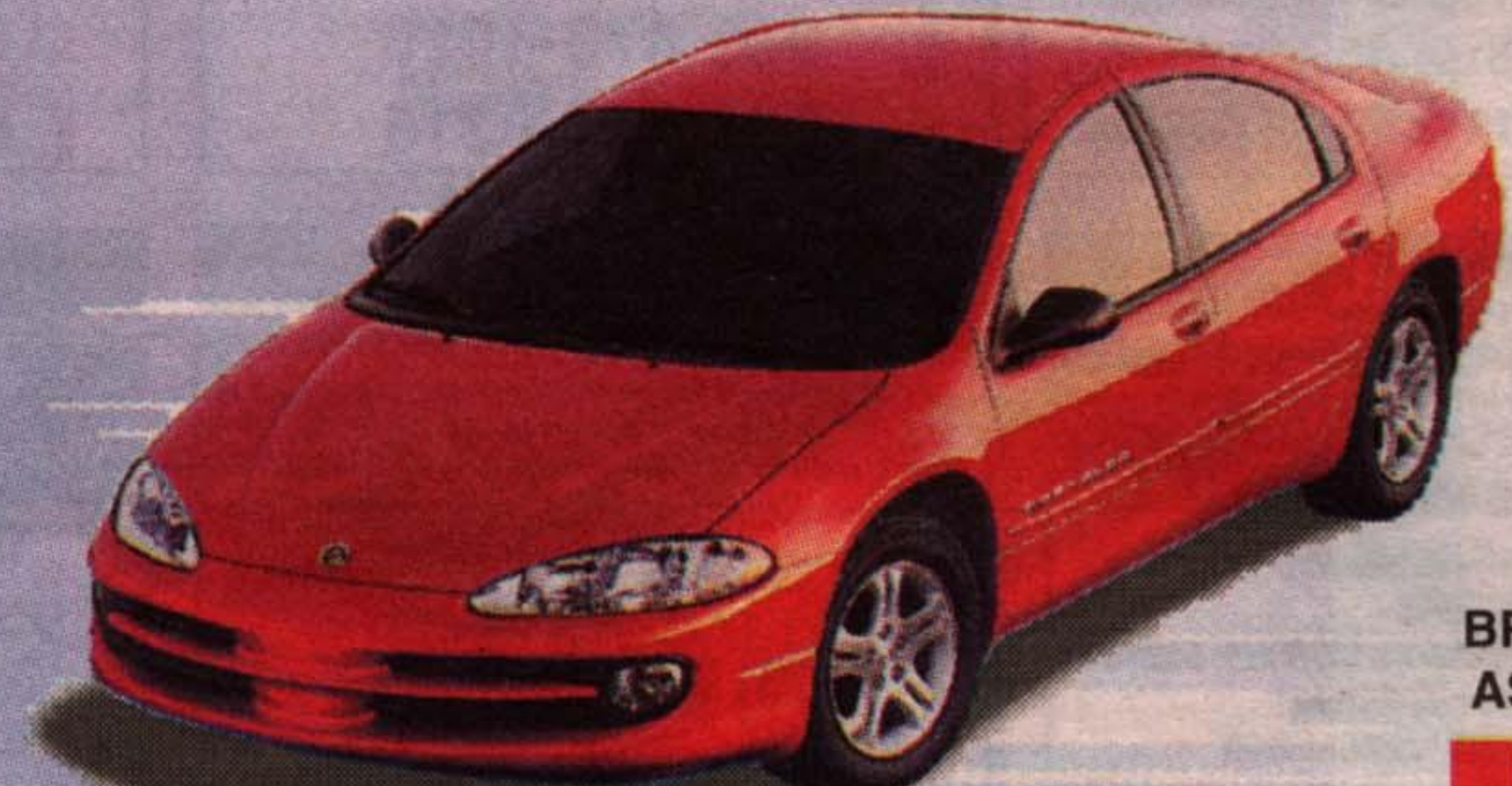
*"The family sports sedan for the driving enthusiast"*

- 200 HP aluminum 2.7L V6 engine •4-speed automatic transmission •AM/FM stereo cassette •Air conditioning •4 wheel disc brakes •Power windows, locks, mirrors
- Next-Generation dual air bags
- 16 inch wheels •Tilt steering

### INTREPID 22C

LEASE FINANCE INTEREST RATE 5.3%

MONTHLY PAYMENT 36 months	\$299	\$388	\$475
FREIGHT	\$810	\$810	\$810
SECURITY DEPOSIT	\$300	\$400	\$500
DOWN PAYMENT OR EQUIVALENT TRADE	\$5,090	\$2,500	\$0
FIRST PAYMENT DUE ON DELIVERY	\$7,515	\$4,725	\$1,862



Built at  
BRAMALEA  
ASSEMBLY



**Stop by to see  
the newly arrived  
2000 Dodge  
Dakota Quad Cab™**



**Dodge**



**Different.**

Chrysler customers read the fine print: \*Taxes included on payments only. These are limited time offers which may not be combined with any other offers and apply to retail deliveries for personal use only on all new in-stock 2000 vehicles. Retailer may sell/lease for less. Retailer trade may be necessary. Leases/financing subject to approval by Chrysler Credit Canada Ltd. Lease payments exclude freight, licence, insurance, registration. These are closed end leases with no buyback requirements. See retailer for complete details and conditions. Based on a 36-month lease for 2000 vehicles equipped as described: Chrysler Intrepid 22C; Chrysler Cirrus LX 24B. Total lease obligation: Intrepid 22C on payments of \$299/\$388/\$475 are \$16,664/\$17,278/\$17,910; Cirrus 24B on payments of \$299/\$347/\$398 are \$14,394/\$14,707/\$15,043. Lease finance rates are: 5.3% Intrepid; 4.3% Cirrus. Kilometres are limited to 61,200. Charge of \$0.12/km for excess kilometres. Base on a 48 month lease on 2000 Chrysler Neon 22D. Lease finance interest rate is 2%. Total lease obligation is on Neon 22D on payments of \$299/\$274/\$249 are \$15,077/\$14,877/\$14,677. Kilometres are limited to 100,800. Charge of .08¢/km for excess km. †0% purchase financing for a 48 month term on all 2000 Neons, Eg: \$20,000/\$25,000 @ 0% APR/48 month term. Monthly payment is \$416.67/\$520.84. Cost of borrowing: \$0. Total obligation is \$20,000/\$25,000. Financing excludes licence, insurance and registration. First payment due on delivery includes freight, security deposit, 1st monthly payment and applicable taxes. This is a sample calculation only. ©Jeep is a registered trademark of Daimler Chrysler Corp. Used under licence by Daimler Chrysler Canada Inc. Daimler Chrysler Canada Inc. is a wholly owned subsidiary of Daimler Chrysler Corp.

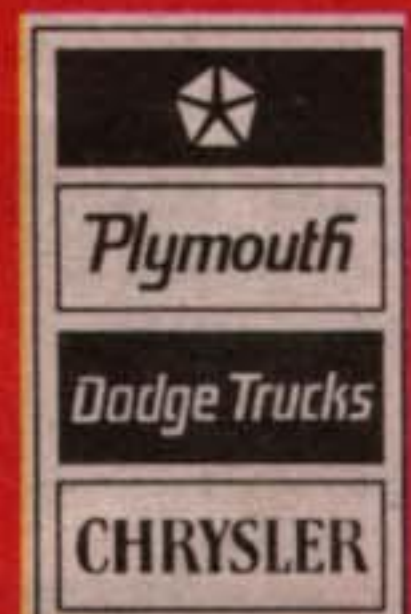


## GEORGETOWN CHRYSLER JEEP

GEORGETOWN CHRYSLER (1993) LTD.

336 GUELPH ST., GEORGETOWN

877-0149 877-5108



website address: [www.haltonhills.com/georgetownchrysler](http://www.haltonhills.com/georgetownchrysler)