

# HASSELL

**AUTOMOTIVE LIMITED**  
**Quality Used Cars**  
 "Complete Sales & Service"



Warranty

**95 LUMINA**  
 Clean, Loaded,  
 Auto **\$9,800**



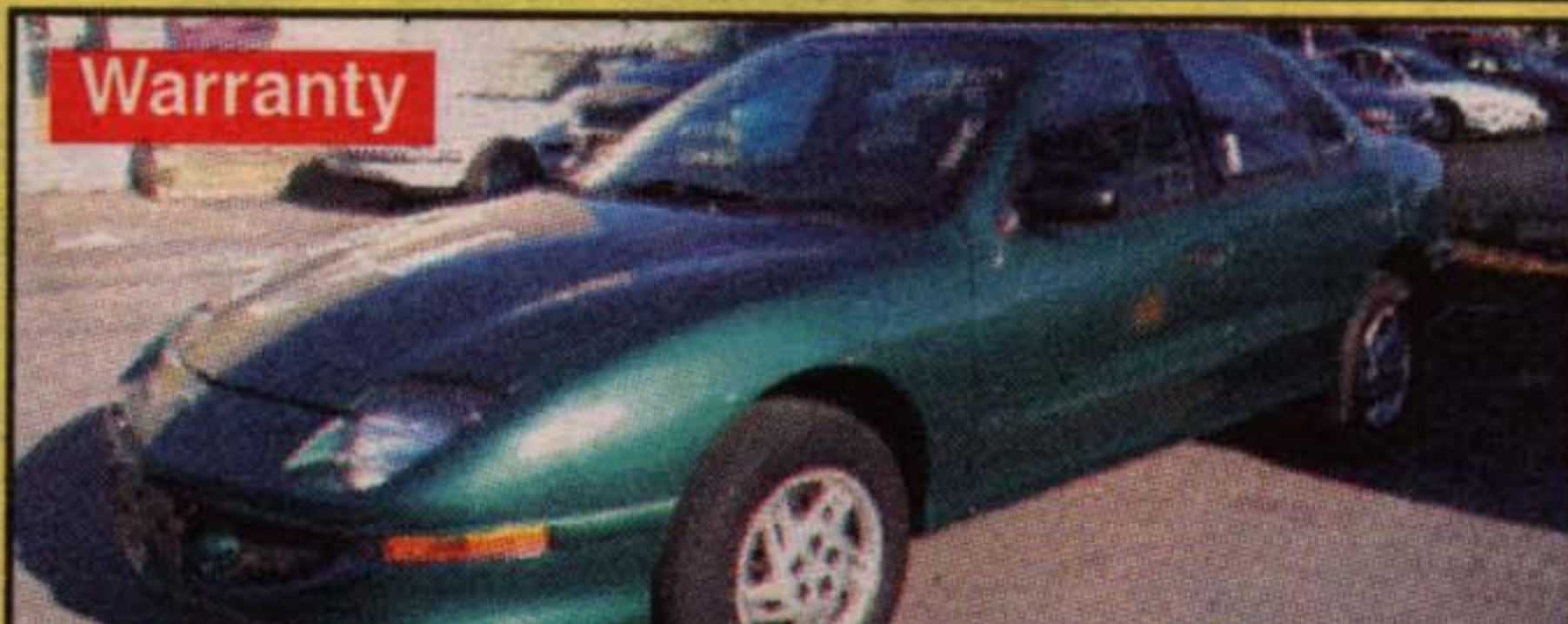
Warranty

**91 323 MAZDA**  
 5 Speed,  
 PS, PB **\$4,200**



Warranty

**94 GRAND AM**  
 Auto, A/C,  
 Excellent Shape **\$8,500**



Warranty

**97 SUNFIRE**  
 Auto, A/C,  
 Excellent Shape **\$10,500**



Warranty

**92 CORSICA**  
 V6, Auto, Good reliable  
 Transportation **\$5,300**



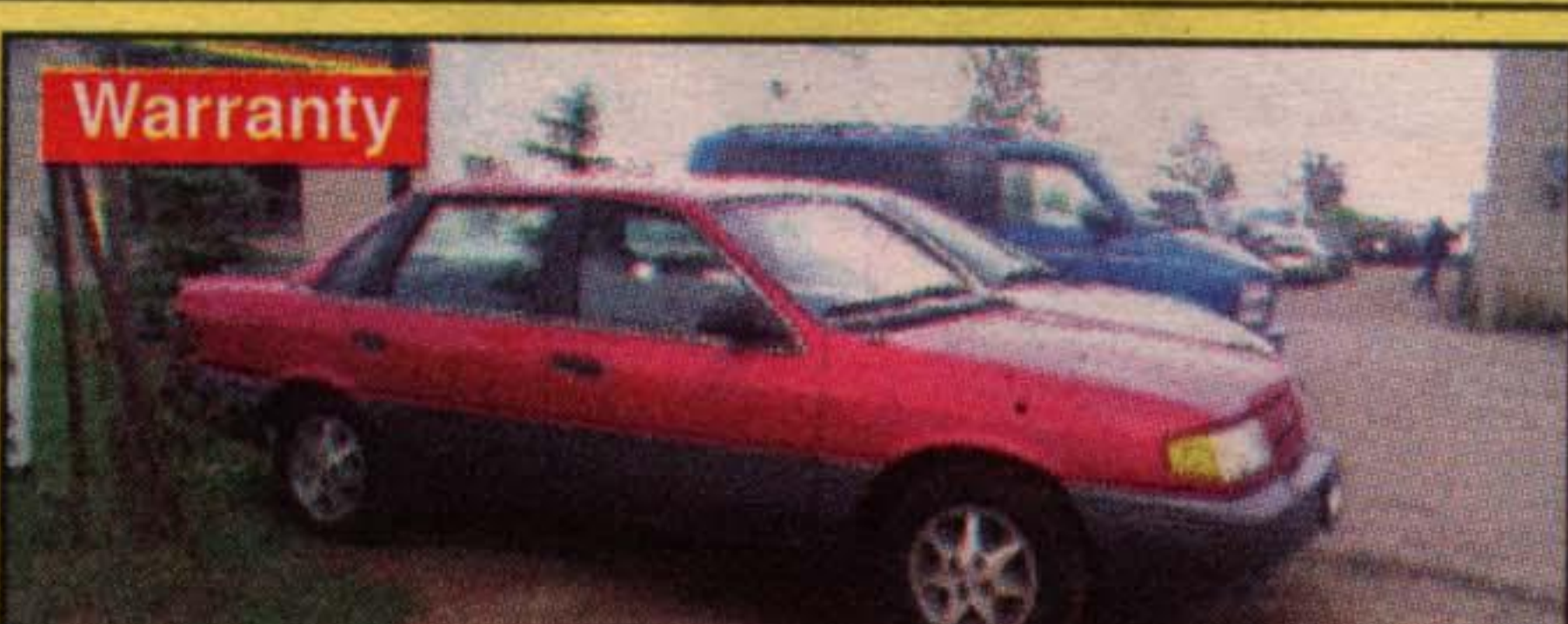
Warranty

**93 GRAND AM**  
 2 Door, Auto  
 V6, A/C **\$6,500**



Warranty

**95 GRAND AM**  
 V6. Loaded,  
 Excellent Shape **\$10,500**



Warranty

**94 TEMPO**  
 Auto,  
 4 Cyl. **\$5,500**



Warranty

**94 CUTLASS  
 SUPREME**  
 Loaded, Auto, V6 **\$10,500**



Warranty

**97 LUMINA**  
 Auto, V6  
 Loaded, Clean **\$13,300**

## Water costs will continue to increase

Continued from pg. 1

Also, the region is embarking on a series of big buck capital projects such as the \$98 million pipe project aimed at bringing lake water to service new development in Milton.

And though the 'Big Pipe' project is vital for Milton's growth, it isn't the most cost-effective way to deliver water services, noted Rinaldo.

The rate budget is also paying for long-term cast iron main replacement and heavy plant equipment replacement projects.

Both are proactive steps to replace worn out apparatus, preventing emergency breaks in the system.

Overall, the region will spend \$180 million over the next two years on capital projects.

A short-term budget forecast for the utility budget predicted a 1.2 per cent increase for 2001, moving up to 3.7 per cent in 2002.

That would shoot up to 7.9 per cent in 2003.

But staff will be looking at ways to stabilize that large jump in the next few years, said Rinaldo.

But Dennison charged a lack of interest, as attested to by a sparsely-attended budget committee meeting, will likely cause the budget to be pushed through.

"There is virtually no interest in this so I am probably standing here all alone," he said. "But if there is a way, and I think there is, not to pass on a rate increase, I think we should do it."

It isn't a lack of interest but an understanding that outstanding water quality costs, said Oakville Councillor Kathy Graham.

"When people realize that they now have a safe system, they're glad that the municipality has invested in their community," said Graham. "I really feel this is a quality of life issue. People expect that water quality will be optimum and there is a price involved."

She contended that while areas like Toronto and Hamilton may have smaller rates, they haven't been doing the preventative maintenance needed to keep those system running smoothly.

Oakville Councillor Stephen Sparling noted that though it goes against the grain to vote for a rate hike, the proposed plan is the best one to take Halton's water system into the future.

—By Irene Gentle, special

## WANTED: COMMUNITY MEMBERS

The Halton District School Board requires a maximum of four "members-at-large" to serve on its Special Education Advisory Committee (SEAC).

The Committee, an advisory group to the Board, will bring forward information and recommendations regarding programs and services for exceptional pupils. Three trustees and 12 members representing local associations also serve on SEAC.

The "members at large" must have the following qualifications:

- a Canadian citizen
- of the age of 18 years or older
- a resident within the jurisdiction of the Halton District School Board
- a public school supporter

A Board employee is not eligible for appointment.

Interested community members should submit their application with a letter indicating what strengths they would bring to this position, to:

Dusty Papke, Director of Education  
 Halton District School Board  
 2050 Guelph Line, PO Box 5005  
 Burlington, Ontario L7R 3Z2

The deadline for applications is December 1, 1999.

Ethel Gardiner  
 Chair of the Board



Dusty Papke, Ed.D.  
 Director of Education

**Dave Hassell 877-7958**  
 45 MOUNTAINVIEW RD. N., GEORGETOWN L7G 4J7