

**Say You Saw It In . . . The Independent & Free Press Real Estate Digest**

**RE/MAX**

360 Guelph Street, Georgetown

**BLUE SPRINGS REALTY (Halton) CORP.**



**DONNA RAE\***  
\*Sales Rep.  
**877-5211**

**PARK DISTRICT - \$172,900**



This home will definitely surprise you at the size once you enter the front door. Large living room as well as a large formal diningroom. Country size eat-in kitchen boasting lots of cupboards, a skylight and French door. Main floor laundry and washroom. Patio walkout as well as side door walkout to porch (utility room) to side yard. 3 bedrooms and main washroom. Shed with hydro, all fenced yard and deck. This home shows to perfection. Downtown park location. Walk to schools, 2 major parks, library, cultural center.

**REXWAY BUNGALOW**



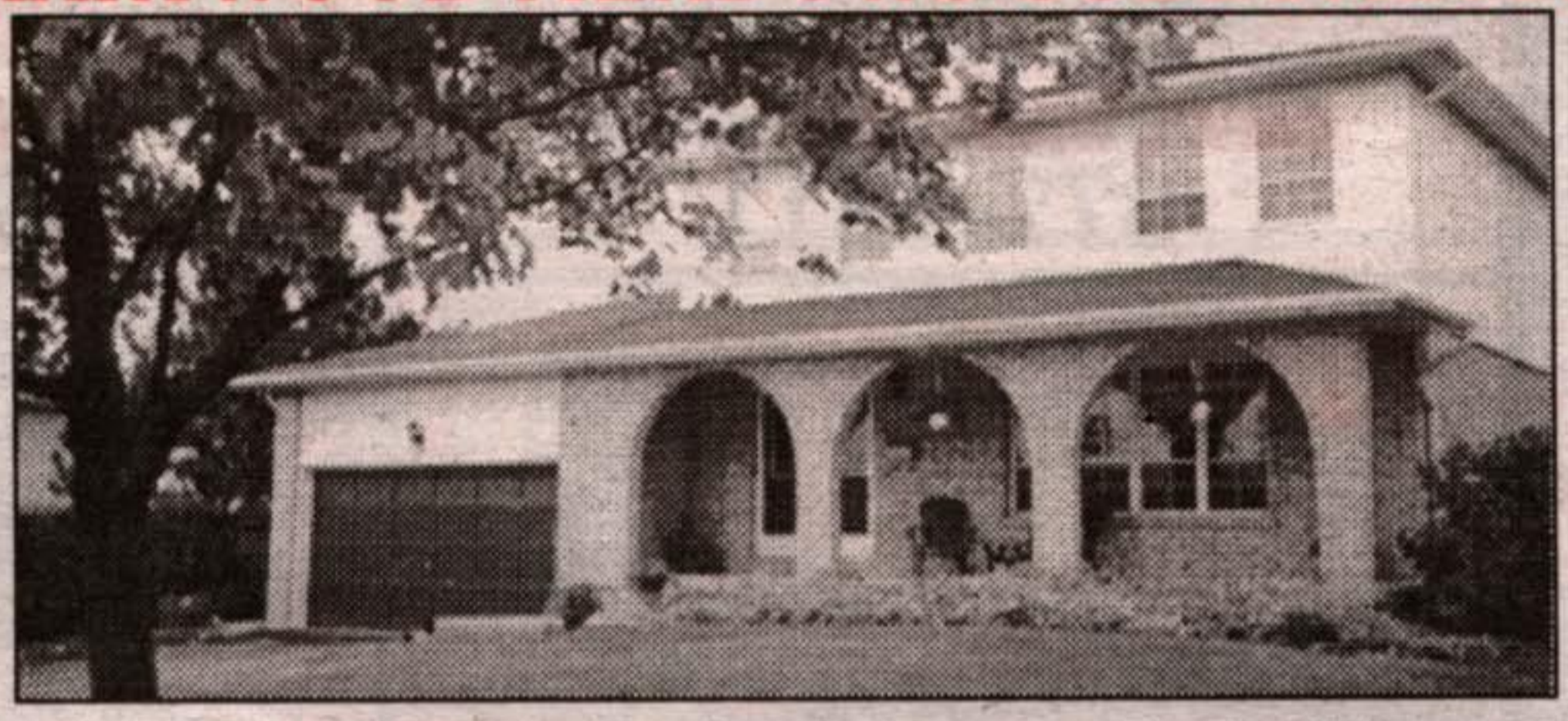
4 bedroom bungalow on desirable street. Large eat-in kitchen. Finished rec room in basement. Hardwood floors throughout including under broadloom. Master bedroom has an ensuite. Central air and electronic air cleaner. Listed at \$214,900. Call Donna Rae\* for a personal viewing.

**\$159,900**



For this truly gorgeous 3 bedroom townhouse backing onto the ravine. Terrace style balcony off the kitchen is great for relaxing as well as a basement patio door walkout. Master bedroom boasts an ensuite as well as a walk-in closet and a bay window. Decorated beautifully so move right in. Call Donna Rae\*.

**MARYWOOD MEADOWS SUBDIVISION**



Absolutely gorgeous 4 bedroom 3 washroom home in downtown park location. Walk to downtown, library and major park. Large living room and separate formal dining room. Nicely decorated and very bright eat-in kitchen. Four nice size bedrooms as well as a master bedroom ensuite. Family room with patio door walkout and Berber broadloom. Be sure not to miss this one.

*"My business is helping you feel right at home."*

**KATHLEEN "HAS THE BUG" TO SELL!**



**Kathleen Walsh\*** \*Sales Rep.  
**877-5211** or **1-800-834-5516**  
**RE/MAX BLUE SPRINGS REALTY (HALTON) CORP.**

How much is your home worth in today's market?  
Call Kathleen Walsh\* for a **FREE MARKET EVALUATION.**  
Not intended to solicit property already listed.

**A NEW HOME FOR THE MILLENIUM**



Immaculate end unit with finished family room in basement, extra kitchen cupboards & counter space, central air, gas fireplace, w/o from kitchen to private patio & perennial gardens.

**LUXURIOUS CONDO - HALLMARK PLACE**



- 1445 sq. ft. spacious 2 bedroom condo
- Exclusive Building - only 4 suites per floor
- large solarium
- roughed in central vac