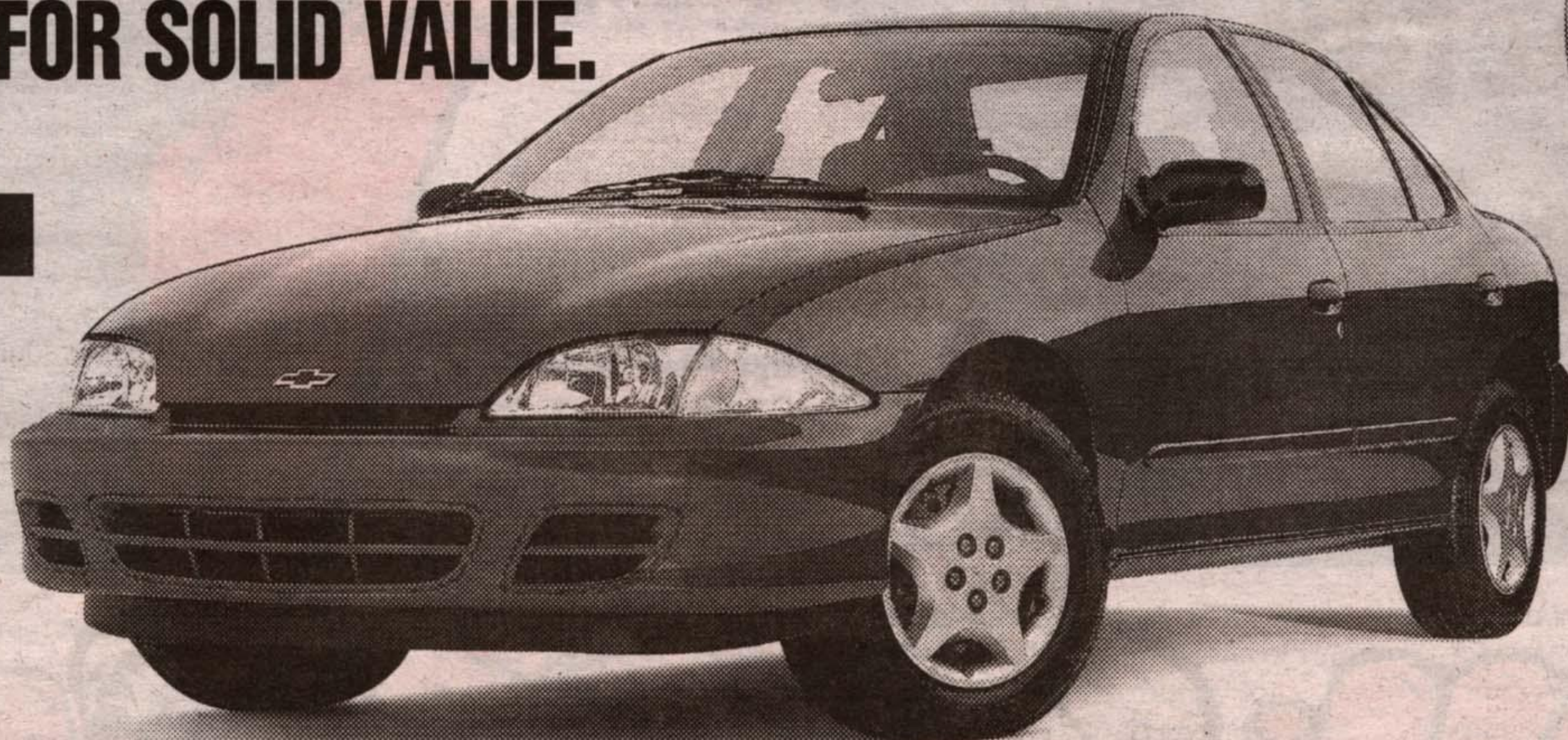


FRESH OFF THE LINE

DEPEND ON THEM FOR SOLID VALUE.



Chevrolet Cavalier Sedan



Puts You In Complete Control With Up-Front, Full Disclosure Pricing With No Aftershock.

2000 CAVALIER SEDAN
NO SURPRISE LEASE GUIDE

MONTHLY PAYMENT (36 mo/60,000 km)	\$218
CASH DOWN (includes freight of \$480 and Air Tax of \$100)	\$2,000
GAS TAX	\$75
PRE-DELIVERY INSPECTION	NO EXTRA CHARGE
PST/GST (incl. Tax On Payment)	\$344
SECURITY DEPOSIT	\$300
TOTAL AMOUNT DUE ON DELIVERY	\$2,937

Licence, P.P.S.A. & Admin. Fees Extra
With \$0 down, monthly payment is \$276 (plus tax) - \$729 due on delivery.

CAVALIER 2000 VALUE PACKAGE
REMOTE KEYLESS ENTRY - PLUS DUAL THEFT-DETERRENT SYSTEM • POWER DOOR LOCKS • AIR CONDITIONING
• 4-Speed Automatic with Traction Control • Anti-Lock Brake System
• Cruise Control • AM/FM Cassette • 2.2 L/115 HP Engine

SMARTLEASE **PURCHASE PRICE**
\$218 1.9% **\$18,845**
36 MONTHS LEASE RATE UP TO 36 MONTHS OR PURCHASE FINANCING UP TO 48 MONTHS. (INCLUDES FREIGHT OF \$680 AND AIR TAX OF \$100. LICENCE, INSURANCE AND TAXES EXTRA.)
OUR PRICE INCLUDES FREIGHT, AIR TAX & PDI.

Chevrolet Cavalier 2000

CAVALIER 2000 VALUE PACKAGE
5-SPEED GETRAG TRANSMISSION • 4-SPEAKER CD PLAYER • Upgraded 15" Wheels • Anti-Lock Brake System • PASSLock II Security System • 2.2 L/115 HP Engine • Tinted Glass
AIR CONDITIONING FOR ONLY \$15 MORE A MONTH



2000 CAVALIER COUPE
NO SURPRISE LEASE GUIDE

MONTHLY PAYMENT (36 mo/60,000 km)	\$188
CASH DOWN (includes freight of \$480)	\$2,000
GAS TAX	\$75
PRE-DELIVERY INSPECTION	NO EXTRA CHARGE
PST/GST (incl. Tax On Payment)	\$339
SECURITY DEPOSIT	\$300
TOTAL AMOUNT DUE ON DELIVERY	\$2,902

Licence, P.P.S.A. & Admin. Fees Extra
With \$0 down, monthly payment is \$245 (plus tax) - \$668 due on delivery.

GRADUATE PROGRAM \$1000

SMARTLEASE **PURCHASE PRICE**
\$188 1.9% **\$16,435**
36 MONTHS LEASE RATE UP TO 36 MONTHS OR PURCHASE FINANCING UP TO 48 MONTHS. (INCLUDES FREIGHT OF \$680. LICENCE, INSURANCE AND TAXES EXTRA.)
OUR PRICE INCLUDES FREIGHT & PDI.

Chevrolet Impala 2000

FEATURES:
• 3.4 Litre SFI V6 180 HP Engine • 4-Speed Automatic Transmission
• 6-Passenger Seating • 16" Wheels and Tires
• Largest 4-Wheel Disc Brakes In Class
• AM/FM Stereo with CD • Remote Keyless Entry
• Steering Wheel-Mounted Cruise Control • Next Generation Driver and Front Passenger Air Bags • PASSLock™ Theft-Deterrent System and Lockout Protection • Air Conditioning
• Power Programmable Door Locks/Windows/Mirrors



2000 CHEVROLET IMPALA
NO SURPRISE LEASE GUIDE

MONTHLY PAYMENT (36 mo/60,000 km)	\$318
CASH DOWN (includes freight of \$835 and Air Tax of \$100)	\$4,100
GAS TAX	\$75
PRE-DELIVERY INSPECTION	NO EXTRA CHARGE
PST/GST (incl. Tax On Payment)	\$674
SECURITY DEPOSIT	\$375
TOTAL AMOUNT DUE ON DELIVERY	\$5,542

Licence, P.P.S.A. & Admin. Fees Extra
With \$0 down, monthly payment is \$443 (plus tax) - \$1,121 due on delivery.

SMARTLEASE **PURCHASE PRICE**
\$318 **\$25,398**
36 MONTHS (INCLUDES FREIGHT OF \$835 AND AIR TAX OF \$100. LICENCE, INSURANCE AND TAXES EXTRA.)
OUR PRICE INCLUDES FREIGHT, AIR TAX & PDI.

Chevy Venture 2000

FEATURES:
• 3.4 Litre 3400 V6 Engine • 4-Speed Automatic Transmission • 4-Wheel Anti-Lock Braking System • Next Generation Driver and Front Passenger Air Bags
• Deep Tinted Glass • Air Conditioning
• Power Door Locks • Dual Sliding Doors
• 7-Passenger Seat Configuration • Tilt-Wheel™ • AM/FM Stereo • PASS-Key® III Theft-Deterrent System



2000 CHEVROLET VENTURE
NO SURPRISE LEASE GUIDE

MONTHLY PAYMENT (36 mo/60,000 km)	\$248
CASH DOWN (includes freight of \$895 and Air Tax of \$100)	\$4,290
GAS TAX	NOT APPLICABLE
PRE-DELIVERY INSPECTION	NO EXTRA CHARGE
PST/GST (incl. Tax On Payment)	\$681
SECURITY DEPOSIT	\$300
TOTAL AMOUNT DUE ON DELIVERY	\$5,519

Licence, P.P.S.A. & Admin. Fees Extra
With \$0 down, monthly payment is \$373 (plus tax) - \$879 due on delivery.

★★★★★
Five Star Safety Rating
Chevy Venture is the first vehicle¹ ever to earn 5 stars (the top safety rating) for both driver and rear-seat passenger in side-impact testing.
¹Side-impact air bags are standard on Chevy Venture.

SMARTLEASE **PURCHASE FINANCE** **CASH PURCHASE PRICE**
\$248 **1.9%** **\$24,498**
36 MONTHS WITH 2.9% LEASE RATE UP TO 48 MONTHS (INCLUDES FREIGHT OF \$895 AND AIR TAX OF \$100. LICENCE, INSURANCE AND TAXES EXTRA.)
OUR PRICE INCLUDES FREIGHT, AIR TAX & PDI.

Chevrolet Malibu 2000

FEATURES:
• 3.1 Litre 3100 V6 Engine
• 4-Speed Automatic Transmission • 4-Wheel Anti-Lock Braking System • 166,000 km between tune-ups • Next Generation Driver and Front Passenger Air Bags • Air Conditioning • AM/FM Stereo with CD Player • PASSLock™ II Theft-Deterrent System • Tilt-Wheel™ Steering • Battery Run-Down Protection



2000 CHEVROLET MALIBU
NO SURPRISE LEASE GUIDE

MONTHLY PAYMENT (36 mo/60,000 km)	\$268
CASH DOWN (includes freight of \$720 and Air Tax of \$100)	\$3,320
GAS TAX	\$75
PRE-DELIVERY INSPECTION	NO EXTRA CHARGE
PST/GST (incl. Tax On Payment)	\$549
SECURITY DEPOSIT	\$325
TOTAL AMOUNT DUE ON DELIVERY	\$4,537

Licence, P.P.S.A. & Admin. Fees Extra
With \$0 down, monthly payment is \$369 (plus tax) - \$936 due on delivery.

SMARTLEASE **PURCHASE FINANCE** **PURCHASE PRICE**
\$268 1.9% **\$22,298**
36 MONTHS UP TO 48 MONTHS (INCLUDES FREIGHT OF \$720 AND AIR TAX OF \$100. LICENCE, INSURANCE AND TAXES EXTRA.)
OUR PRICE INCLUDES FREIGHT, AIR TAX & PDI.

AUTO INSURANCE SAVINGS
FROM MOTORS INSURANCE CORPORATION - THE INSURANCE PEOPLE FROM GENERAL MOTORS.
VISIT YOUR CHEVROLET • OLDSMOBILE DEALER and call MIC for a fast, no obligation auto insurance quote.^A

For a limited time at your Chevrolet • Oldsmobile dealers.



We'd like you to know more: Come visit us at your local dealer, on our website at www.gmcanada.com or call us at 1-800-GM-DRIVE. All leases have annual kilometre limit of 20,000 km, \$0.12 per excess kilometre. PST, GST and insurance extra. All leases have an annual cost of borrowing of 1.9%/1.9%/6.9%/2.9%/5.9% per annum for Cavalier Sedan R7Z/Cavalier Coupe R7Z/Impala R7Z/Venture R7C/Malibu R7Z. Other lease options available. Financing on approved GMAC credit only. Example: \$10,000 at 1.9% APR, the monthly payment is \$216.52 for 48 months. Cost of borrowing is \$392.96. Total obligation is \$10,392.96. Down payment, trade and/or security deposit may be required. Monthly payment and cost of borrowing will vary depending on amount borrowed and down payment/trade. For Chevy Venture R7C. *The SmartLease monthly payment and the GMAC Purchase Finance Rate is not calculated on the "Cash Purchase" Price as shown. The difference between the price for the SmartLease/GMAC Purchase Offer and the "Cash Purchase" offer is deemed under provincial disclosure laws to be a cost of borrowing, whether or not the same represents actual interest and is required to be expressed as an annual percentage rate which is 4.61%. Offers apply as indicated to new 2000 models of Cavalier Sedan R7Z/Cavalier Coupe R7Z/Impala R7Z/Venture R7C/Malibu R7Z equipped as described. Offers apply to qualified retail customers in the Ontario Chevrolet Oldsmobile Dealer Marketing Association area only. Dealer order or trade may be necessary. Limited time offer which may not be combined with other offers. Dealers are free to set individual prices. See your dealer for conditions or details. ^AGraduate rebate subject to program rules. ^BCar or light truck. ^CTest conducted by the National Highway Traffic Safety Administration (NHTSA). ^DYour GM Dealer is not licensed as an insurance broker, and is not acting as an agent or broker or in any other capacity on behalf of Motors Insurance Corporation. Available to residents of Ontario only.

