

BRING THE FAMILY

Super 4 bedroom home with gleaming hardwood floors throughout. Glamorous bathroom totally redone! Updated eat-in kitchen with walkout to deck and fenced yard. Main floor family room also with walkout to yard and finished basement with 3 piece washroom. Walk to schools, parks and shopping! \$229,900. **Martha Summers***. GAL-99



PONDS ARE PARADISE

30 private acres with approx. 3 1/2 acres of your own ponds. Swim from the raft, fish, canoe and even jet ski on your private water. Sunfilled 3 bedroom with huge country kitchen with walkout overlooking water, main floor family room with vaulted beamed ceilings, fireplace and pine floors. Hardwood floors, ceramics, bay windows are only a few of the features. \$425,000. **Martha Summers***. SIM-99



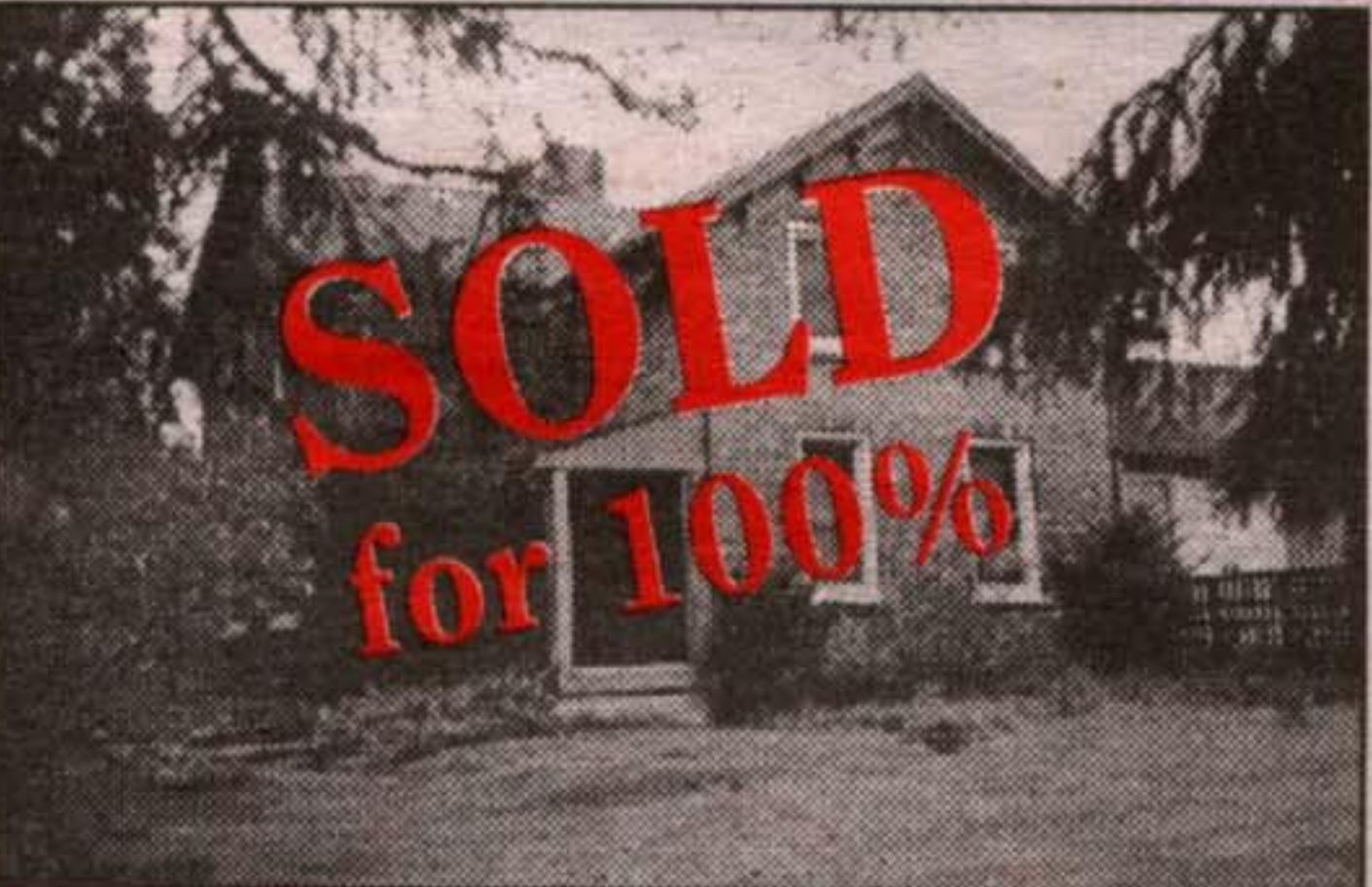
COUNTRY RETREAT

Private 48 acres with 3 spring fed ponds, with a bungalow overlooking the pond and river. Four sleeping cabins, an inground pool and barn all complete this property. Mature trees and landscaping. \$269,000. **Martha Summers***. FED-99



PICTURE PERFECT

Erin is just a great place to raise your family. Immaculate 4 bdrm with mn floor family rm with woodburning fireplace. Large eat-in kitchen with walkout to a deck and private yard. Full master ensuite and walk-in closet. This great location allows you to walk to school, the Village, the "rail trail" or the community centre. Conservation lands are almost at your doorstep. Move in and enjoy life!! \$259,000. **Martha Summers***. SMI-99



AN ARTIST'S TOUCH!!

MARTHA SUMMERS*

Sales Rep.

877-5165

874-3040 (Tor.)
(519) 833-9714 (Erin)

www.realtor.com/toronto/msummers



Johnson Associates
HALTON LTD., REALTOR



President's Circle Award Winner

Performance Group Member

1993 1994 1995
1996 1997 1998

"MARTHA SUMMERS= PROVEN PERFORMANCE"

The hardwoods are turning, the evening light is getting shorter and we have had our first frost - Fall is here and so is our fall market. The buyers are out driving the countryside and villages and calling us to see what is available. If you would like to have an idea of what your property is worth, please call Martha Summers* for a FREE Market Evaluation. It's my job and I love it!!

"Proven Performance Counts - Talk to a Proven Performer"



NEW

LOOKING FOR SOMETHING SPECIAL??

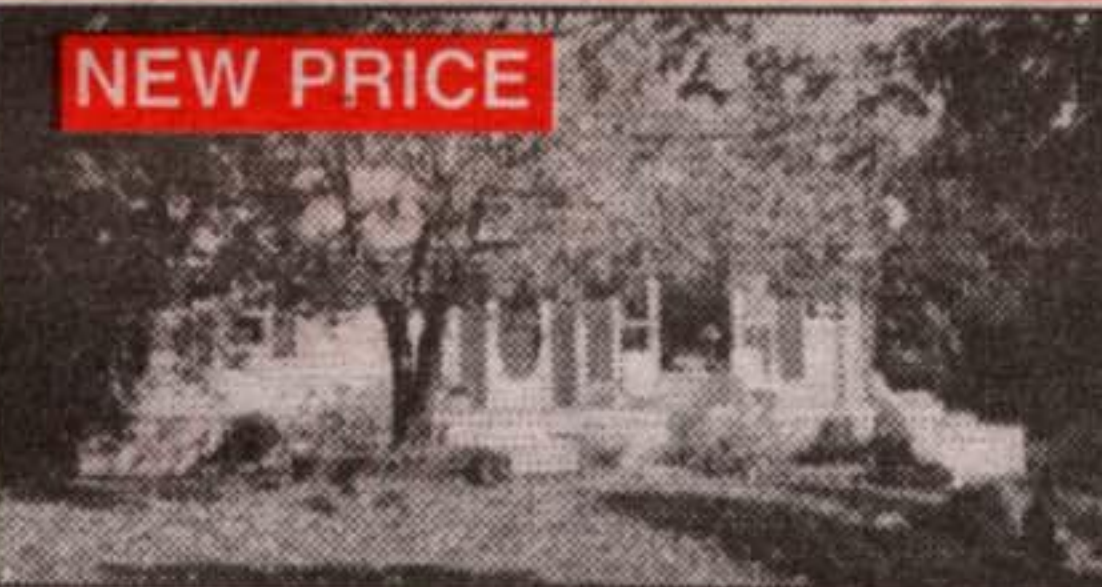
Executive country on private 2 acres walking distance to golf course. Contemporary yet country with abundance of natural light, cathedral ceilings, custom "artistic" windows, hdwd and ceramic flrs. Grand country kit. w/w to spacious deck. Open concept and a great entertaining home. Fam rm boasts pine interior w/vaulted ceilings and a propane fireplace. Great for home office with lowest level above grade. Words don't do this justice. \$549,000. **Martha Summers***. MOL-99



NEW PRICE

THE WARMTH OF YESTERYEAR \$275,000

Truly charming with quality and detail throughout. Sit on your front verandah and enjoy!! New kitchen addition and renovation including skylight, eating area and walkout to southeast facing deck. Formal dining room with pine floors, bay window, pocket doors and extra high ceilings, the living room boasts the same. Mn flr fam room w/w to the deck plus a sep. rec rm. Quiet street in mature area. Move in and Enjoy!! **Martha Summers***. YOU-99



NEW PRICE

PERFECTION IN THE COUNTRY \$279,000

Sit on the deck and watch the activity on this fabulous spring fed pond. The rainbow trout are huge, the raft is out for the winter season but the hockey nets are waiting for some ice. The deer and wildlife also come to see what's happening!! Great gardens and a goldfish pond as well. A sunfilled 3 bdrm home offers pine floors in the large L-shaped living rm/dining rm overlooking the pond. Finished rec. rm plus 4th bdrm makes this a great family home. Privacy on 2.6 acres near Terra Cotta. **Martha Summers***. MANN-99



NEW

BACKING ONTO CONSERVATION - CLOSE TO TOWN

Quiet cul-de-sac w/conservation lands in behind. Almost 1 acre w/ solid brick 4 bdrm w. w/o basement. Huge kitchen w. walkout to tiered deck overlooking private yard, mn. flr. family room w. fieldstone fireplace. Walk to schools, park and town yet enjoy that country feeling. \$369,000. **Martha Summers***. DET-99



NEW

ROOM FOR YOUR FAMILY AND HORSES!!

5+ bdrms in this century brick home w. board & batten addition. Room for your every need w. huge kitchen, formal entertaining rms. and lots of play rms for computers, family, exercise or private space. 48 acres w. barn currently set up w. 6 standing stalls and 5 box stalls plus paddocks and sand ring. Great south Erin location. \$574,900. **Martha Summers***. DAV-99



COUNTRY CLASSIC

Century charm abounds with hardwood floors, high ceilings, original trim and lots of upgrades including the kitchen and a fabulous 5 piece washroom with whirlpool, sep. shower stall. Bay windows with views of the water and large garden area. Over 3/4 of an acre with sep. garage and hobby kennel all for \$305,000. **Martha Summers***. BAI-99



1849 CEDAR LANE MILL FABULOUS

Authentic stone mill in a private setting now converted to a special residence. Superb open concept stone interior with high ceilings, fireplace and walkouts to the "millrace" or the stone patio. Three finished levels all with upgraded kitchen and bathrooms and a floor to ceiling stone fireplace in the master bedroom. Something very special at \$599,000. Contact **Martha Summers*** for a personal viewing.



CENTURY STONE ON 100 ACRES

Superb century stone home with wheelchair accessible addition set up for a disabled person or in-laws. Centre hall plan with updated kitchen and bathrooms. Six bedrooms in total! Corner farm with great workable land with pretty views, currently operating as a dairy goat farm. Large double bank barn plus smaller "run in" barn both suitable for horses. Something special at \$459,900. **Martha Summers***. THO-99



COUNTRY PURE & SIMPLE

THINKING OF BUILDING - THEN TALK TO US ABOUT LAND!!

We have just **SOLD** 3 parcels of land ranging from 1 acre to 89 acres from \$147,000 to \$350,000. The good news is that we still have other parcels available.

New Listing - 62 rolling acres with a good pond site, open fields and treed area. Located south of Belfountain on a paved road. Great views and great potential for an estate setting. \$230,000. **Martha Summers***.

Erin Value 38 acres for \$119,000. Good building location with long term privacy protection. Cedar bush and pond sites. You can't beat this price - take a closer look!! **Martha Summers***.

New Listing - 51 acres of gently rolling land with a great building site for sunrises and sunsets located on paved road just north of Olde Base Line Caledon. Great riding trails and surrounded by estate homes. Vendor may hold financing for qualified buyer. \$219,000. **Martha Summers***.

Hardwood Forest, 95 acres, year round stream, open fields, and very interesting terrain for an executive home or farm in a great Caledon location on a paved road. This property has it all - location - privacy - water - woods and meadow. \$299,000. **Martha Summers***.

A Great Starter Lot - \$59,000 for 2 acres located south of Hwy. 24 in Caledon. Fish in the nearby Credit River, commute with easy access to paved roads and build your dream. **Martha Summers***.

"MARTHA SUMMERS = PROVEN PERFORMANCE"