

Catch The Wave of **SAVINGS**   
**SPA SALE!**  
 SELECT FLOOR MODELS CLEARANCE PRICED.

**HORIZON** **CASH N' CARRY** •16 Jets •3 HP Pump  
 •Arctic Insulation •Winter Cover  
 •In Deck •6 person  
 •78"x78"x36"  
**\$3699** + TAX  
 CEDAR CABINET AVAILABLE AT \$300.

**GALILEO** **STARTING AT** •21 Jets •Arctic Insulation  
 •4.5 HP Pump •Circ Pump  
 •Electronic Top Side •In Deck  
 •Winter Cover •78"x82"x35"  
**\$4199** + TAX  
 CEDAR CABINET AVAILABLE AT \$400.

**ZODIAC** •Available with 28 Jets  
 •4.5 HP Pump •Arctic Insulation  
 •Electronic Top Side •Circ Pump  
 •DELUXE MODEL - 43 Jets  
 2 x 4.5 HP Pumps •84"x84"x35"  
 6 Person

**POSEIDON** •Available with 28 Jets  
 •4.5 HP Pump •Arctic Insulation  
 •Electronic Top Side •Circ Pump  
 •DELUXE MODEL - 44 Jets  
 2 x 4.5 HP Pumps  
 •84"x84"x35"  
 7 Person

**FINANCING AVAILABLE**  
 90 Days No Interest No Payment O.A.C.

**FREE DELIVERY**  
 Local to Driveway



**HOME DECOR**  
 265 Guelph St.,  
 873-2753

**OPEN SUNDAYS**  
 12-4 PM

# Renovations could help reduce energy bills

Planning to renovate your home this fall? Before you start remodelling that kitchen or bathroom, you may want to consider having your home evaluated to identify opportunities to incorporate energy-efficient upgrades into the renovation—upgrades designed to keep your energy bills low and your home more comfortable year-round.

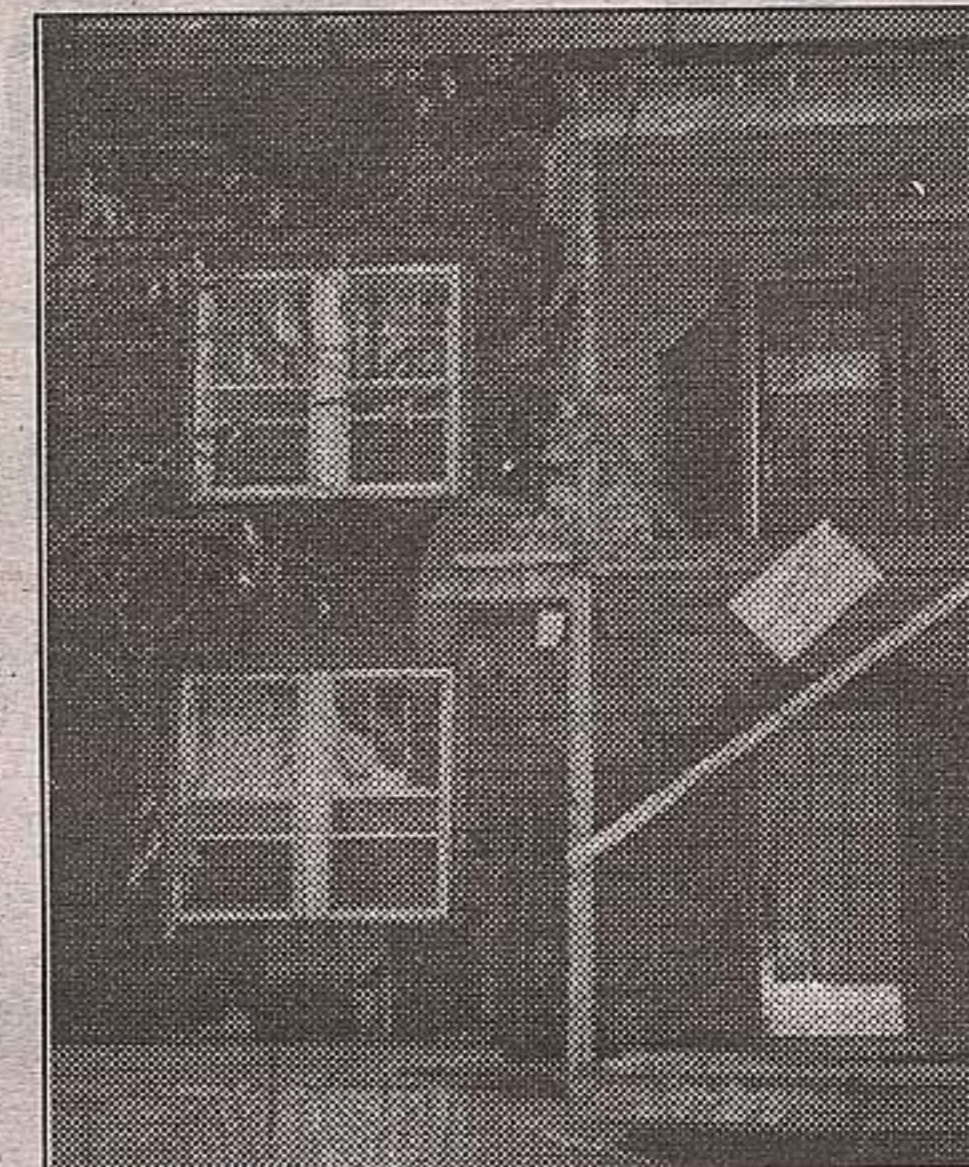
Qualified technicians working for EnerGuide for Houses, a new federal government program, will conduct a walk-through energy assessment of your home that includes recording insulation levels and assessing the energy efficiency of its water and ventilation systems. They will also perform a "blower door test" of your home to find energy-wasting air leaks. A computer-aided house modelling program is used to estimate your home's current energy use and to recommend cost-effective energy saving measures. You are presented with a copy of the technician's report, and a label that rates your home's energy efficiency against similar houses across Canada.

The technician's recommendations can be used to help improve the com-

fort level of your home and reduce your use of energy in the process. For example, removal of old plaster or dry-wall may give you the opportunity to add insulation, install ductwork for a more efficient heating system, or seal cracks and holes in the exterior walls to reduce or eliminate costly drafts. If you're changing windows, you may wish to change to higher-efficiency low-e argon filled units.

You are under no obligation to carry out the recommendations of the report, but many of the 5,000 homeowners who have already had their homes evaluated have indicated that they liked the fact that the technicians provided unbiased advice about what and how best to renovate with energy efficiency in mind.

For information on the EnerGuide for Houses Program, or to obtain free publications on how to make you home more energy-efficient, contact the Office of Energy Efficiency (OEE) at Natural Resources Canada, 580 Booth Street, Ottawa, Ontario, K1A 0E4, fax: (613) 943-1590. Some publications can be ordered on-line at the OEE's web site at <http://oee.nrcan.gc.ca>. (NC)



Check out the energy efficiency of your home.



# GEORGETOWN MARKETPLACE

## FASHION SHOW

**FRIDAY, SEPTEMBER 24/99**  
**CENTRE COURT - 7:30 p.m.**

**Hosted by Lisa Rogers of W.T.N.**  
*Featuring City Line Models*  
 Draws for prizes donated by the merchants.

*Over 60 stores to serve you.*  
**280 Guelph St. - Hwy. 7 Georgetown**  
 Visit our Website: <http://www.haltonhills.com/marketplace>  
**Tel. 873-8918** **873-8109**