

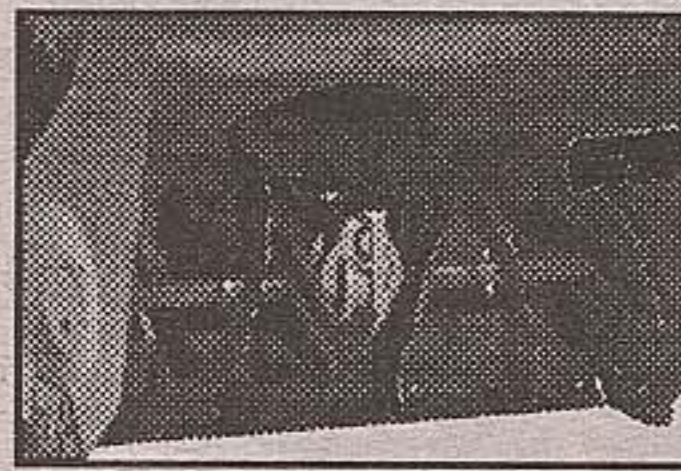
Opening

Sept. 16th @ 7AM

North Brampton

What Is Dual Stage vs. Single Stage Operation?

Dual Stage

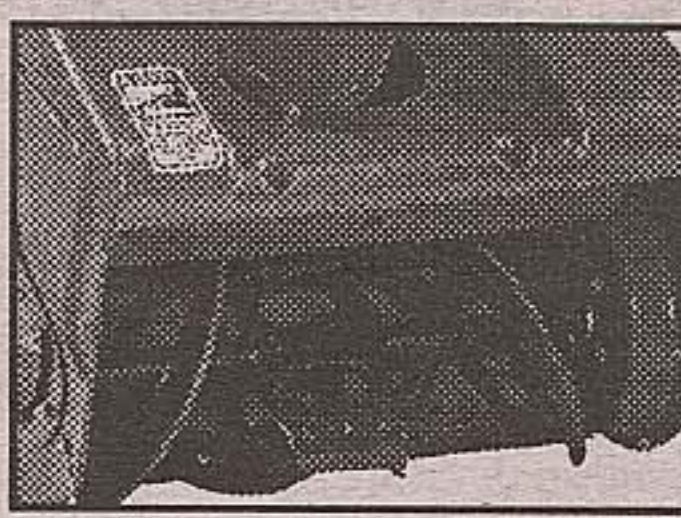


Designed for medium to heavy-duty applications

Rugged, heavy-duty machines designed for quick, easy removal of large amounts of snow. Serrated auger handles the toughest conditions such as wet, heavy snow and packed ice.

- Ice Breaker** Serrated auger carves through larger volumes of denser, heavier packed ice and snow, feeding it to the impeller.
- High Speed Impeller** propels snow through the Free Flow®, non-clogging discharge chute for distances up to 30 feet.

Single Stage



Designed for Lighter-duty applications

Such as clearing sidewalks, steps and smaller driveways. Light-weight and compact for easy maneuverability.

How Much Snow Do You Need To Clear?

- Light-Use**
Ideal for clearing sidewalks, steps & smaller driveways
- Single stage operation
 - 15"-20" clearing path
 - V7.5AMP to 4.5HP
- Medium-Use**
Designed for quick, easy removal of large amount of snow
- Dual stage operation
 - 22"-24" clearing path
 - 5HP to 8HP
- Heavy-Use**
Handles the toughest conditions such as wet, heavy snow & packed ice
- Dual stage operation
 - 27"-31" clearing path
 - 10HP to 11HP

NOMA PERFORMANCE

Snow Blowers

2 Year Warranty

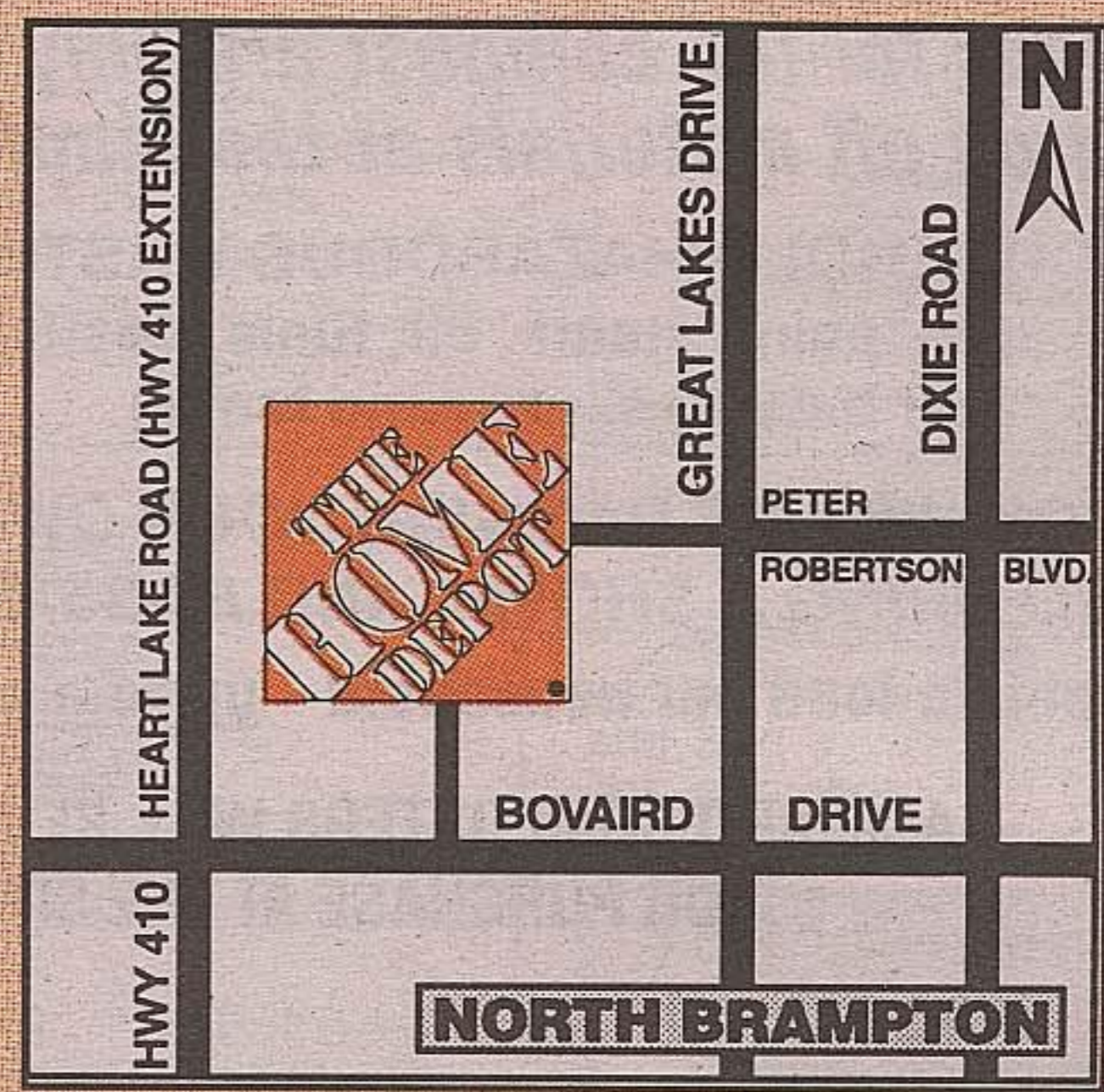
THEY'RE ONLY \$50 PAY PER MONTH

\$1990

31" - 11 HP Dual Stage

- Tecumseh® overhead valve regency engine
- Metal discharge chute with hand guard
- Single-handed control
- ICE BREAKER™ saw tooth auger 631114X31 (171421)

Heavy-Use



North Brampton

60 Great Lakes Drive
(Great Lakes Dr., north of Bovaird Dr.)
(905) 792-5430

Directions:

From South: Highway 403 to Highway 410 north. Exit on Bovaird Drive. East on Bovaird Drive, left turn at Great Lakes Drive (1st lights). The Home Depot is on your left.

From West: Highway 401 West to Highway 410 north. Exit on Bovaird Drive. East on Bovaird Drive, left turn at Great Lakes Drive (1st lights). The Home Depot is on your left.



\$1299 THEY'RE ONLY \$37 PAY PER MONTH

29" - 10 HP Dual Stage

- Metal discharge chute, single handed control
- Ice Breaker™ serrated auger
- Push button electric start 629104X31 (171409)

Heavy-Use

\$996 THEY'RE ONLY \$28 PAY PER MONTH

24" - 8 HP Dual Stage

- Tecumseh Snow King engine, Ice Breaker serrated auger
- Free flow non-clogging discharge chute, Dual/Single wheel drive
- 13" Snow Hog tires, remote chute rotation with adjustable deflector 624804X31 (171461)

Medium-Use



\$789 THEY'RE ONLY \$22 PAY PER MONTH

22" - 5 HP Dual Stage

- Tecumseh Snow King engine, dual stage
- Free flow non-clogging discharge chute, Dual/Single wheel drive
- 12" Snow Hog tires, remote chute rotation with adjustable deflector 622515X31 (171563)

Medium-Use



\$499 THEY'RE ONLY \$21 PAY PER MONTH

21" - 4.5 HP Single Stage

- Tecumseh Snow King engine, Clean Sweep auger
- Free flow non-clogging discharge chute
- 7" wheels, remote chute rotation with adjustable deflector 621451X31 (171394)

Light-Use

OPEN 7 DAYS A WEEK:

Monday - Friday 7AM - 10PM
Saturday 7AM - 8PM, Sunday 8AM - 6PM

Prices may vary after Sept. 26, 1999 if there are any market variations.

We reserve the right to limit quantities to the amount reasonable for homeowners and our regular contractor customers. It is our policy to run truthful, accurate advertising. In the event of any error, we will make every reasonable effort to accommodate our customers. Details on any product warranties available at the store. Key credit terms: 18.48% applies to purchases of approved products made in a single transaction (which may include multiple items) of \$2,000 or more made under the Major Purchase Feature of The Home Depot Consumer Credit Card. 24.99% APR applies to all other approved purchases on this card. *That's only square: Any minimum monthly payment shown is an estimate, does not include taxes or finance charges and may be higher if you have an existing balance or make additional purchases on your account. Credit subject to approval by GE Capital Canada Ltd.



Visit The New Home Depot Website

www.homedepot.com

The new Home Depot web site contains several innovative content offerings that are interactive, educational and personalized. More than 150 new Project How-To's, personalized home page, expanded company and investor information, search, help and frequently asked questions section...and Much, Much More!

Other Great Locations To Serve You

- | | | | | |
|---|--|---|---|--|
| STOCKYARDS
St. Clair west of Keele
(416) 766-2800 | OAKVILLE
Hwy. #5 & Hwy. #403
(905) 829-5900 | WOODBIDGE
Hwy. 7 & Weston Rd.
(905) 851-1800 | BARRIE
Molson Park Dr. @ Hwy. 400
(705) 733-2800
1-888-803-3768 | BURLINGTON
Off Guelph Line, north of QEW
(905) 331-1700 |
| SCARBOROUGH
Ellesmere, east of Warden
(416) 609-1800 | AJAX
Pickering Beach Rd & Hwy 2
(905) 428-7939 | RICHMOND HILL
Off Hwy 7, west of Hwy 404
(905) 763-2311 | EGLINTON EAST
Eglinton, East of McCowan
(416) 289-2500 | NEWMARKET
Off Yonge St., north of Davis Dr.
(905) 898-0090 |
| BRAMPTON
Off Steeles, west of 410
(905) 457-1800 | WHITBY
Thickson Rd. S. & Victoria St. E.
(905) 571-5900
1-877-883-3768 | SCARBOROUGH (MORNINGSIDE)
Off Morningside, north of 401
(416) 283-3166 | MISSISSAUGA
Mavis & Matheson
(905) 712-5900 | EAST YORK
Off O'Connor, 1 block north of St. Clair
(416) 752-5900 |
| | ETOBICOKE
Queensway & Hwy. 427 South
(416) 626-9800 | NORTH ETOBICOKE
Kipling, North of 409
(416) 746-1357 | | MARKHAM
Hwy. #7 east of Woodbine Ave.
(905) 940-5900 |



Open during regular store hours except for 24 hour locations which are open from 6AM-11PM



2 Convenient Locations!

#9220 9/15/99