

Say You Saw It In . . .

The Independent & Free Press Real Estate Digest

RE/MAX

360 Guelph Street, Georgetown

BLUE SPRINGS REALTY (Halton) CORP.



DONNA RAE*
*Sales Rep.
877-5211

PARK DISTRICT



Gorgeous 3 bedroom home in the downtown area. Walk or bike to parks, library and medical bldgs. This immaculate semi is beautifully decorated and boasts large principal rooms as well as a main floor laundry and washroom. Bright eat-in kitchen with skylight and French doors. One front and 1 side enclosed porch, all fenced yard for children and pets. Shed with hydro. Be sure to call to view this elegant older home. **Donna Rae***.

\$159,900

DOWNTOWN - PARK LOCATION



\$239,900

Large 4 bedroom home on quiet cul-de-sac. Large principal rooms. Separate dining room for entertaining. 3 washrooms. 2 walkouts to the large private backyard and the inground pool. Bright eat-in kitchen that also faces to the back of yard to overlook the pool. Fireplace in the family room. 2 car garage. Fantastic porch across the whole front of the home for sitting out on those warm summer nights. Walk to downtown, medical center, schools and 2 major parks. \$269,900. Call Donna Rae*.

OPEN HOUSE SUNDAY, SEPT. 19th 1-4 P.M. 22 EVANS PLACE, GEORGETOWN

COUNTRY LIVING AT IT'S BEST



Custom built home in the country on 1.3 acres just north of Ballinafad. Sunken living room, 3 washrooms, large country kitchen, walkout from the basement, double car garage as well as an additional outbuilding and a formal dining room all for \$289,900. Call **Donna Rae***.

VENDOR MOTIVATED



\$239,900

Very large 4 bedroom, 3 bathroom home. Extra wide entry hall. Eat-in kitchen with patio walkout to side deck. Kitchen overlooks the family room boasting a gas fireplace. Oversized double car garage as well as oversized driveway. Very desirable location. Walk to medical centre, plaza, major food stores. This home is very affordable and priced right. Call **Donna Rae***.

For this truly gorgeous 3 bedroom townhouse backing onto the ravine. Terrace style balcony off the kitchen is great for relaxing as well as a basement patio door walkout. Master bedroom boasts an ensuite as well as a walk-in closet and a bay window. Decorated beautifully so move right in. Call **Donna Rae***.

"My business is helping you feel right at home."

KATHLEEN "HAS THE BUG" TO SELL!



Kathleen Walsh* *Sales Rep.

877-5211 or **1-800-834-5516**

RE/MAX BLUE SPRINGS REALTY (HALTON) CORP.

HOLLY MODEL - \$158,900



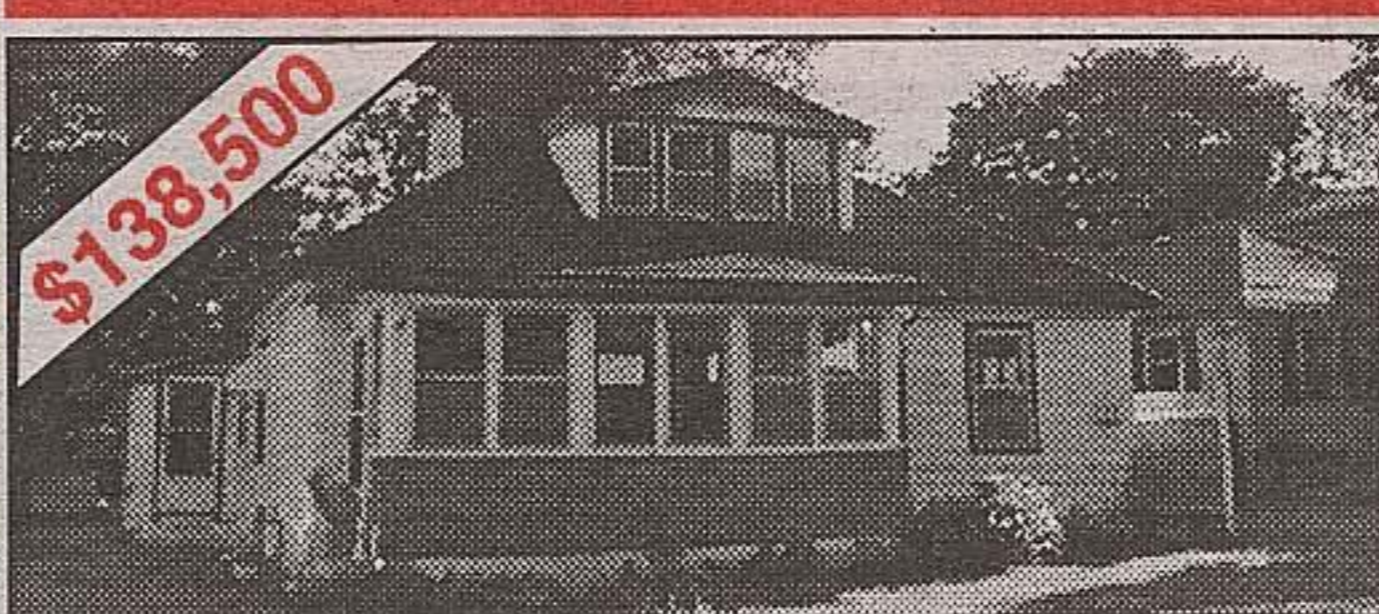
Immaculate end unit with finished family room in basement, extra kitchen cupboards & counter space, central air, gas fireplace, w/o from kitchen to private patio & perennial gardens.

72 FOOT LOT



Large executive home with upgraded oak kitchen cabinets, hardwood floors, 9 ft. ceilings, superior quality carpets. Open concept from kitchen through to family room allows for great entertaining. \$319,900!

TWO HOMES IN ONE!



\$138,500

Georgetown Duplex - Has 2 separate addresses. Live in one side and rent out the other and let your tenant pay your mortgage.