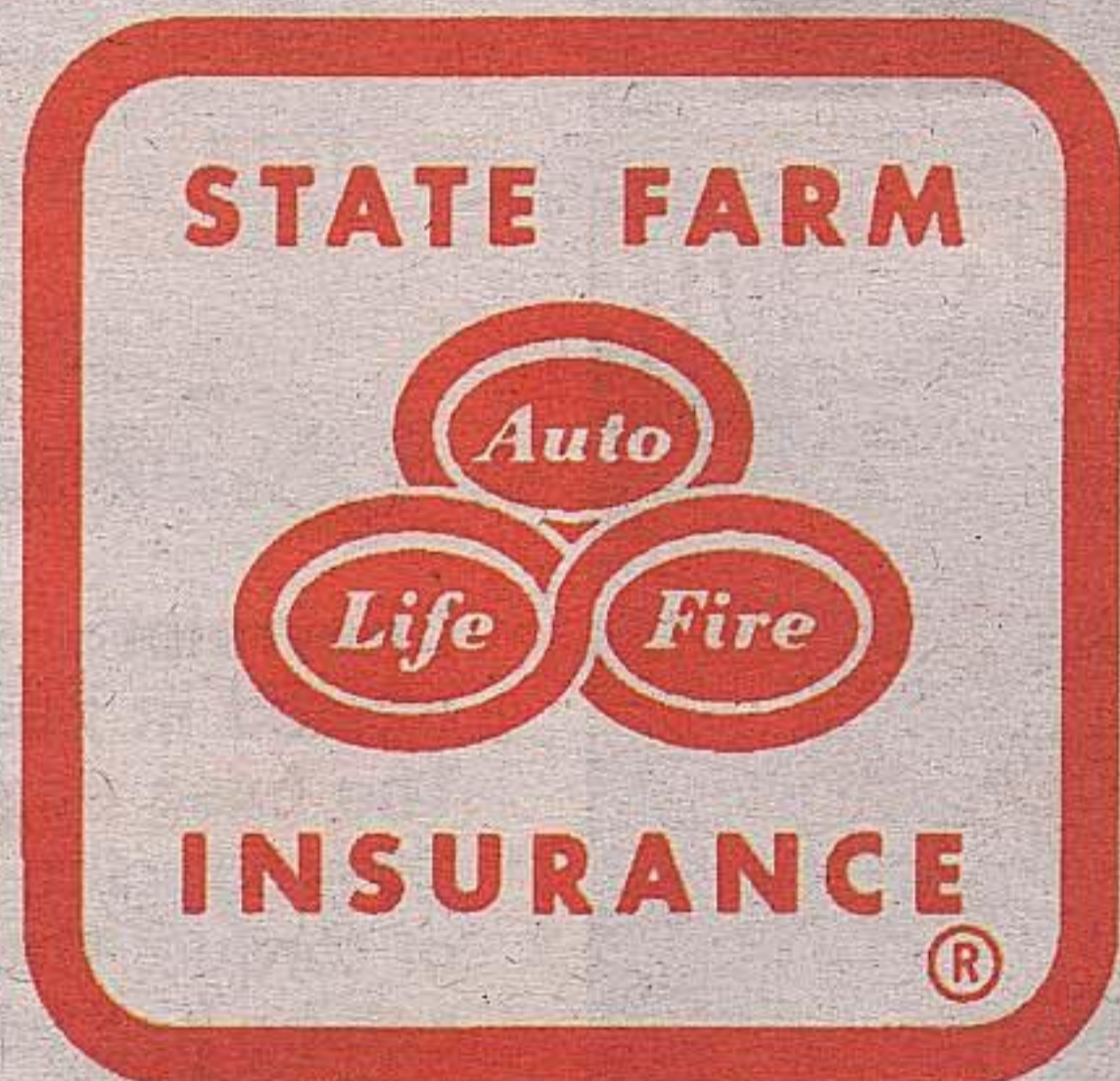
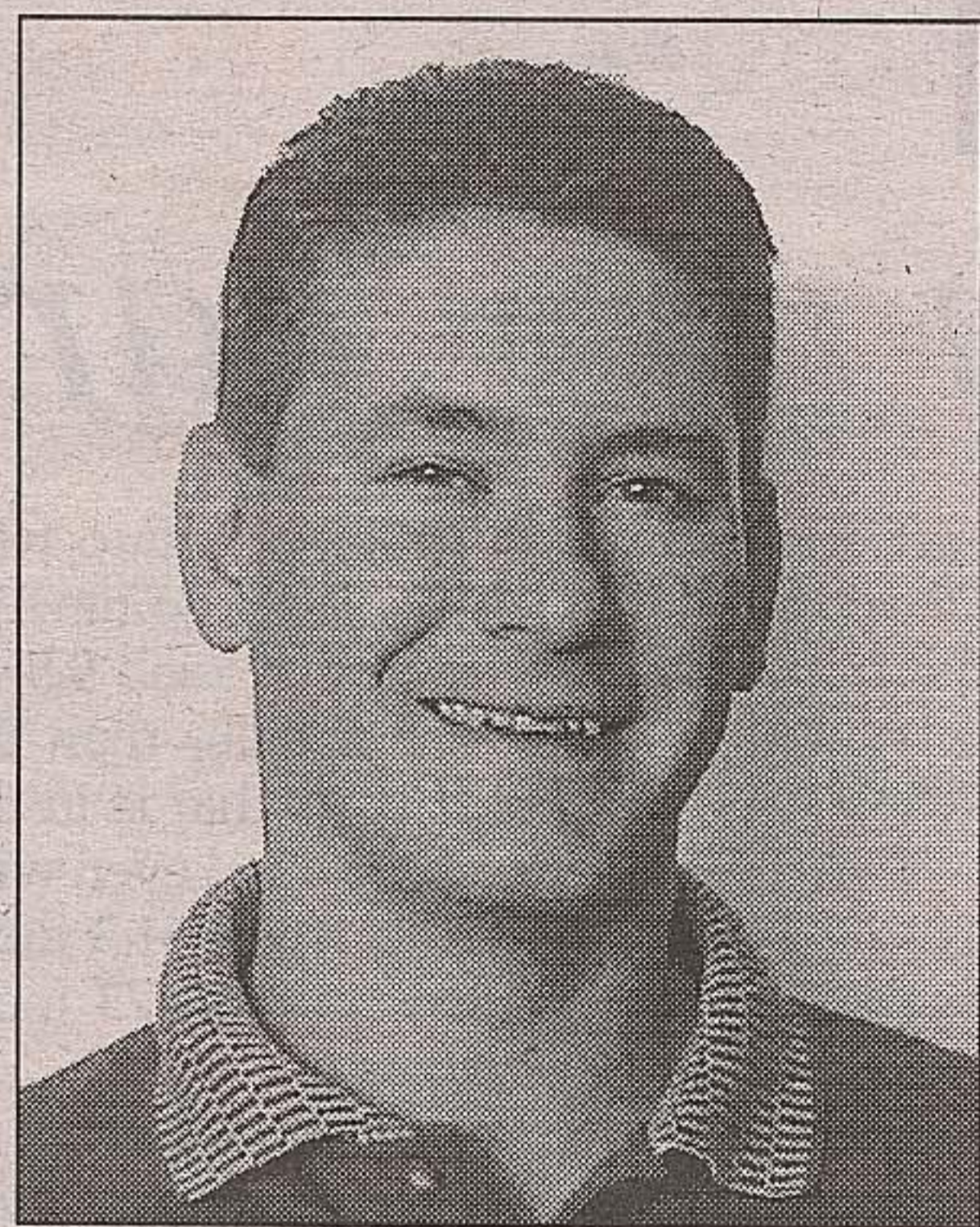


CHOOSING THE RIGHT CAR IS HARD.



CHOOSING THE RIGHT INSURANCE COMPANY IS EASY.



"CALL ME FOR YOUR INSURANCE NEEDS."

PHIL KARDA
Agent

174 Guelph St.
Georgetown
873-1833

TOLL FREE 1-800-757-6145

Fax: 873-1835



*Like a good neighbor,
State Farm is there.®*

State Farm Mutual Automobile Insurance Company
Canadian Head Office: Scarborough, Ontario

Impala opts to go for Room First

Continued from pg. 1

Safety is another strong point from optional side air bag to the three individual tether points along the back deck for child seats to the ability to meet model year 2003 head impact requirements. This is one of the safest automobiles on the road - period.

Chevrolet sees the Base and LS models as its standard and uplevel full-size sedans respectively and, initially, production will be 85 per cent Base and 15 per cent LS. The Base cars get the 3.4-litre engine, while the 3.8-litre goes in the LS and starts at \$28,995.

GM of Canada was kind enough to supply what I consider what the "average" family buyer of this car will be after in the

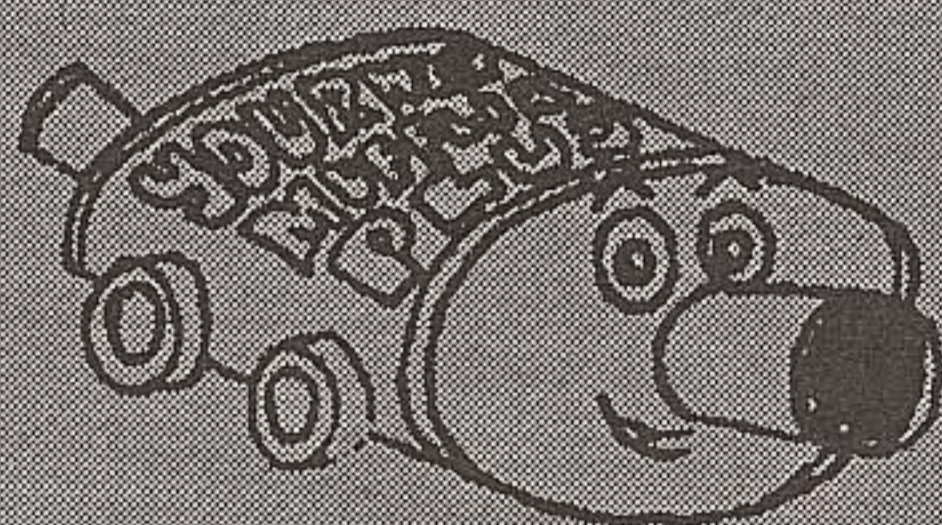
form of an LS with a few options.

To the MSRP of \$24,495 was added the power version of the 60/40 front bench costing \$1,030. The optional ABS was \$775 plus \$320 for the upgraded stereo system and just \$70 for extra speakers.

The other cost was \$1,735 for an equipment group that had a lot of good stuff like manual dual zone air conditioning, overhead console for my 407 transponder, the instrument panel driver information center, tire inflation monitor, steering wheel mounted stereo controls and it also came with options alloy wheels.

Cruise with steering wheel control is standard.

—By Jim Robinson, special



YOURWAY MUFFLER PLUS

853-0900

Acton's Only Exhaust Specialist!

FALL SPECIALS

NEW & USED ALL SEASON & WINTER TIRES, INSTALLED & BALANCED

FREE Exhaust & Front End Inspection
Most Cars & Trucks

Lube, Oil & Filter \$19⁹⁵
featuring Quaker State Oil
Most Cars & Trucks

17 AGNES ST., ACTON



Nissan sales are rockin' and the restyled 2000 Altima is rollin' over the competition.

2000 Altima GXE Thinking Camry, Accord or Malibu? Think about these Altima advantages

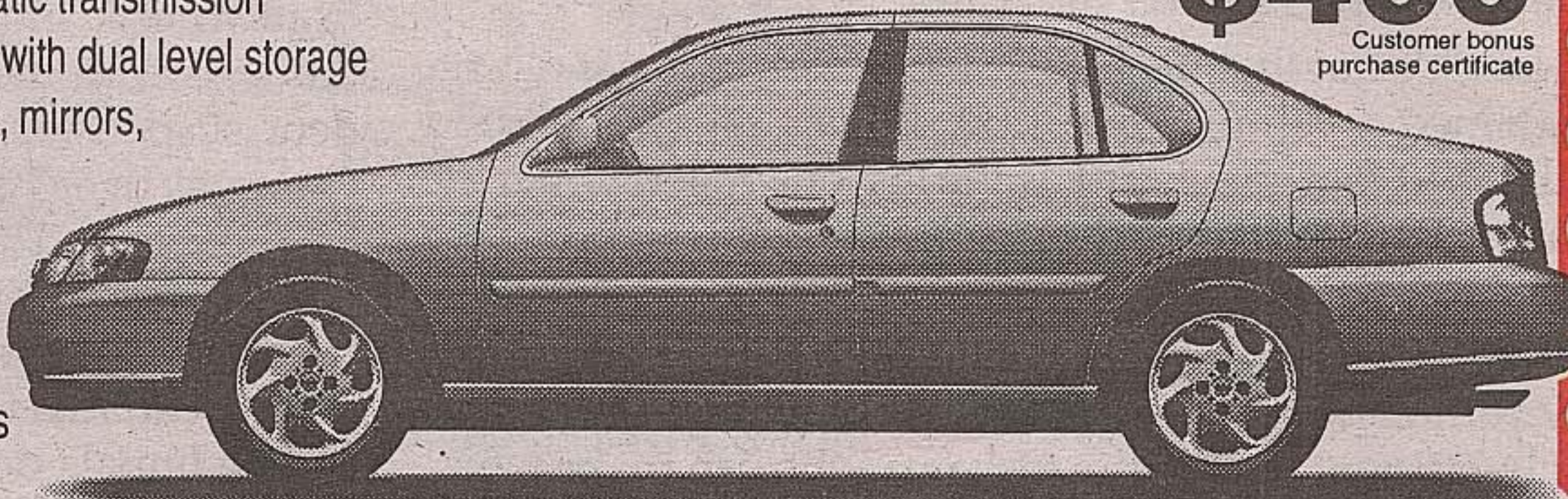
\$298/mo.†/48/mo. Only \$1500 down or **\$23,798** purchase price

"Best Entry Midsize Car in Initial Quality 3 out of the Last 4 Years" - J.D. Power And Associates

- A 155-HP 2.4 litre engine - that's bigger and more powerful than Camry and Accord 4-Cylinder models
- More front and rear head room than Camry
- Wood-toned trim standard
- 100-watt AM/FM/CD audio system
- 4-speed automatic transmission
- Centre console with dual level storage
- Power windows, mirrors, door locks and trunk release
- Air conditioning
- Cruise control
- Remote Keyless entry system with panic alarm
- 8-way adjustable driver's seat
- Vehicle immobilizer key system
- Dual illuminated vanity mirrors
- 60/40 split fold-down rear seat
- And more...

SEPTEMBER bonus

\$400
Customer bonus purchase certificate



Lease rate starting from 5.8%



NORTH END NISSAN
610 MARTIN ST. MILTON 878-4137

*FRT., PDI, LIC. EXTRA. Financing available OAC. Special lease packages on request. See dealer for details.