

Acton Fair offers a mix of old and new

Organizers of the Acton Fall Fair, set for this weekend, have lined up a variety of both new events and traditional favorites that should appeal to people of all ages.

A Tribute to the King Show, Saturday night from 8 to 11 p.m., and a birds of prey exhibition Sunday afternoon at 1 p.m. and 1:45 p.m. are two of the new events included in the lineup at the fair Friday, Saturday and Sunday.

The tribute show will feature Canadian national Elvis impersonator champion Chris Purtee. There will be no additional cost for fair-goers to take in Purtee's show however the Agricultural Society will be accepting donations for the building fund.

The birds of prey exhibition will showcase birds of prey from Mountsberg Conservation Area.

Daniel Varanelli, secretary of the Acton Agricultural Society, said they are expecting about the same number of people this year as they have had over the last few years, about 13,000. Varanelli said two additional tents have been set up on the tennis courts at the fair this year because organizers lost the arena building when it was demolished in the spring.

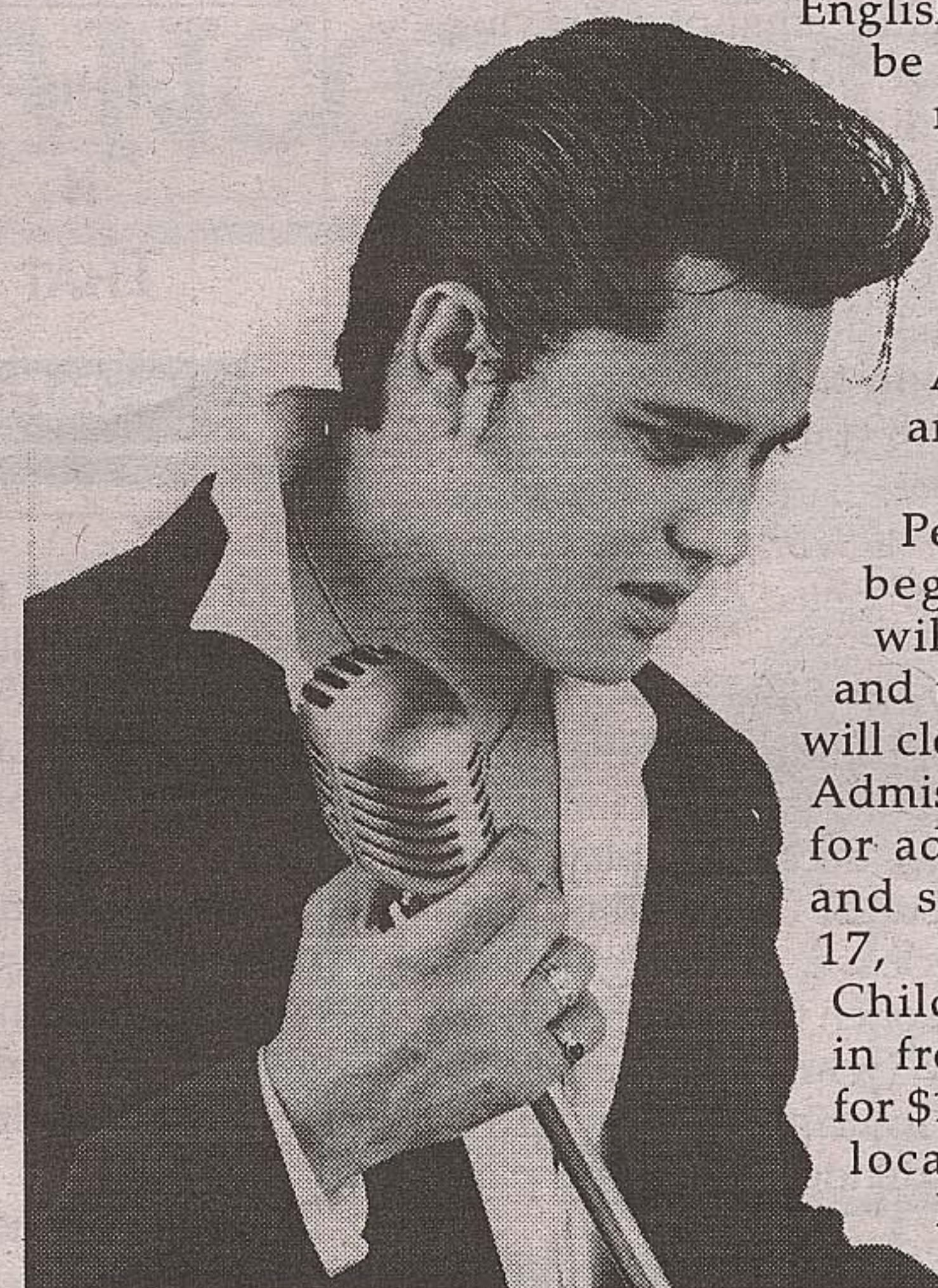
One of the huge tents, both of which are element-proof, will be the site of the Miss Acton Fall Fair Pageant, Friday at 8 p.m., and the Tribute to the King Show Saturday night. The other tent will house the home craft exhibits.

The midway opens at 5:30 p.m. Friday and at 7 p.m. the Acton Citizens Band will parade to the fairgrounds. The fair officially opens at 8 p.m.

On Saturday the fair opens

at 9 a.m. At that time an English and Western Gymkhana and Games Show will be held in Ring 2. On both Saturday and Sunday the Home Craft Exhibits and Poultry Barn will open at 10 a.m.

At 11 a.m. Saturday a 4-H Beef Cattle Show, Heavy Horse Show and Ponies and Hackney Ponies, Light Horse Show and Hackney Horse Show will all be held on the track. A parade will be held at noon. At 1 p.m. Horseshoe Pitching, Northern Borders Flyball and Canine Performance Team and Miniature Horse Show will be held. The Baby Show is scheduled for 1:30 p.m., and the Crazy Canoe Races will be held on Fairy Lake at 2 p.m. A Lawn and Garden Tractor Pull will be held at 6:30 p.m. on the track and the Highway Truck Pull will be held on the track



Canadian national Elvis impersonator champion Chris Purtee will perform Saturday from 8-11 p.m. at this year's Acton Fall Fair.

at 8:30 p.m. The grounds open Sunday at 9 a.m. At that time the English Hunter Show will be held in Ring 2. At noon Sunday the midway opens and the Western Horse Show, Dairy Cattle Show, Antique Tractor Pull and 4 x 4 Truck Pull are set to begin. The Pedal Tractor Pull will begin at 2 p.m. Tents will close at 4:30 p.m., and the Spot in the Park will close at 6 p.m. Admission to the fair is \$6 for adults, \$4 for seniors and students aged 13 to 17, \$2 for children. Children under five get in free. Weekend passes for \$12 are available at all local banks, Acton Pharmacy and Wetherby's.



CUTTING YOU THE BEST DEALS,
NO MATTER HOW MUCH IT HURTS.

SHARPEST DEALS '99 CLEAROUT



'99 Tercel CE

VALUE PACKAGE INCLUDES

- 5-Speed Manual Transmission
- 60/40 Fold Down Rear Seat • Intermittent Wipers
- AM/FM Cassette Stereo • Body Side Mouldings

\$188

per month for 48 months freight & P.D.E. included

Only \$1200 down Nicely equipped for \$14,025

24,000 km's allowed per year



'99 Solara SLE V6

- 3.0L 200HP DOHC V6 • Rear Spoiler
- Power Moonroof / Seats • Leather Seat Surfaces
- Automatic Climate Control • Traction Control
- Premium JBL 8 Speaker Sound System

2.8% NO LIMIT FINANCING ON ALL '99 SOLARAS up to 48 months

(No Dealers Were Hurt In The Making Of This Ad)

To find your nearest dealer
call 1-888-TOYOTA-8
or visit us at www.toyota.ca

2.8% NO LIMIT FINANCING ON ALL '99 MODELS up to 48 months

SEE YOUR
**ONTARIO TOYOTA
DEALER
TODAY!**

CORRECTION

We wish to draw your attention to the following in our current '2 WEEKS TO SAVE' Flyer'

Page 1 of Wrapper: 100-Light Icicle Outdoor Set, 51-2503X and 100-Light Curtain/Icicle Set, 51-2510X
Copy reads: Reg. 13.99 set, SALE 6.99, 1/2 PRICE
Should read: 6.99 set, "GREAT BUY"

WE SINCERELY REGRET ANY INCONVENIENCE WE MAY HAVE CAUSED YOU

Canadian Tire Associate Store

note d337 - Zones Q/4/5/8/9

Tooth Chatter



by
**ALEX
TRENTON
DENTURIST**

LOWER DENTURES

If you are a denture wearer, you will experience some kind of discomfort during the life of your dentures. Lower dentures usually cause more trouble than uppers. Because bottom dentures have little suction to hold them in place, they are more likely to move around, therefore causing various forms of discomfort. Also, poor ridges cause dentures to move easily, because the denture has little to hold onto for stability. The tongue constantly moving as you talk and chew also interferes with the lower dentures. Because of all these factors that effect the function of the lower dentures, most people do have trouble at some point. In fact, many people don't wear their lowers. They divorce them from their upper dentures mates by loosing them in the most unlikely places! Some seek refuge in the bottom drawers, bottom of the bed, under the bed, amongst lipsticks and combs in ladies' handbags, lunch pails, back pockets, and if they get lucky, they are left forever soaking in a denture bath or cup of water!

SOLUTIONS

There are different techniques that can be used to improve the fit of the lower denture, such as a soft-liner insert. This is a permanent liner that will stay soft and give added comfort and stability. For more information, contact our office. We specialize in problem lower dentures. Consultations are always free.

You do not need a referral, simply call our office direct.

We Care About Your Smile!

Alexander Trenton, D.D., F.C.A.D. (A)
Denturist

Georgetown Denture Clinic,
18 Church Street,
Georgetown, Ontario

(905) 877-2359

(Across from the Library and Cultural Centre)

TOYOTA CREDIT Leasing/financing plans from Toyota Credit Canada Inc. O.A.C. Offers valid on new 1999 models leased and delivered by Sept. 30, 1999. License, registration, insurance and taxes are extra. Lease includes a maximum of \$750 for freight & P.D.E., freight and P.D.E. not included in MSRP. Based on 48 mos. walkaway lease at a rate of 3.8% on Tercel CE (model BC531M-B manual transmission) with down payment of \$1200 or trade equivalent. First payment and security deposit of \$225 due on delivery. Total lease obligation of \$10,224 and purchase option price of \$6,031 based on max. of 96,000 kms. Additional km charge of \$0.07 if applicable. MSRP for Tercel CE (model BC531M-B) \$14,025. Finance example: \$20,000 at 2.8% per annum equals \$440.92 per month for 48 months. C.O.B. is \$1,164.16 for an obligation total of \$21,164.16. 2.8% financing available on all 1999 models. See participating Toyota Dealer for details. Dealer may lease/sell for less. In its 1999 crash tests, the Insurance Institute for Highway Safety rated Sierra the best minivan ever tested!