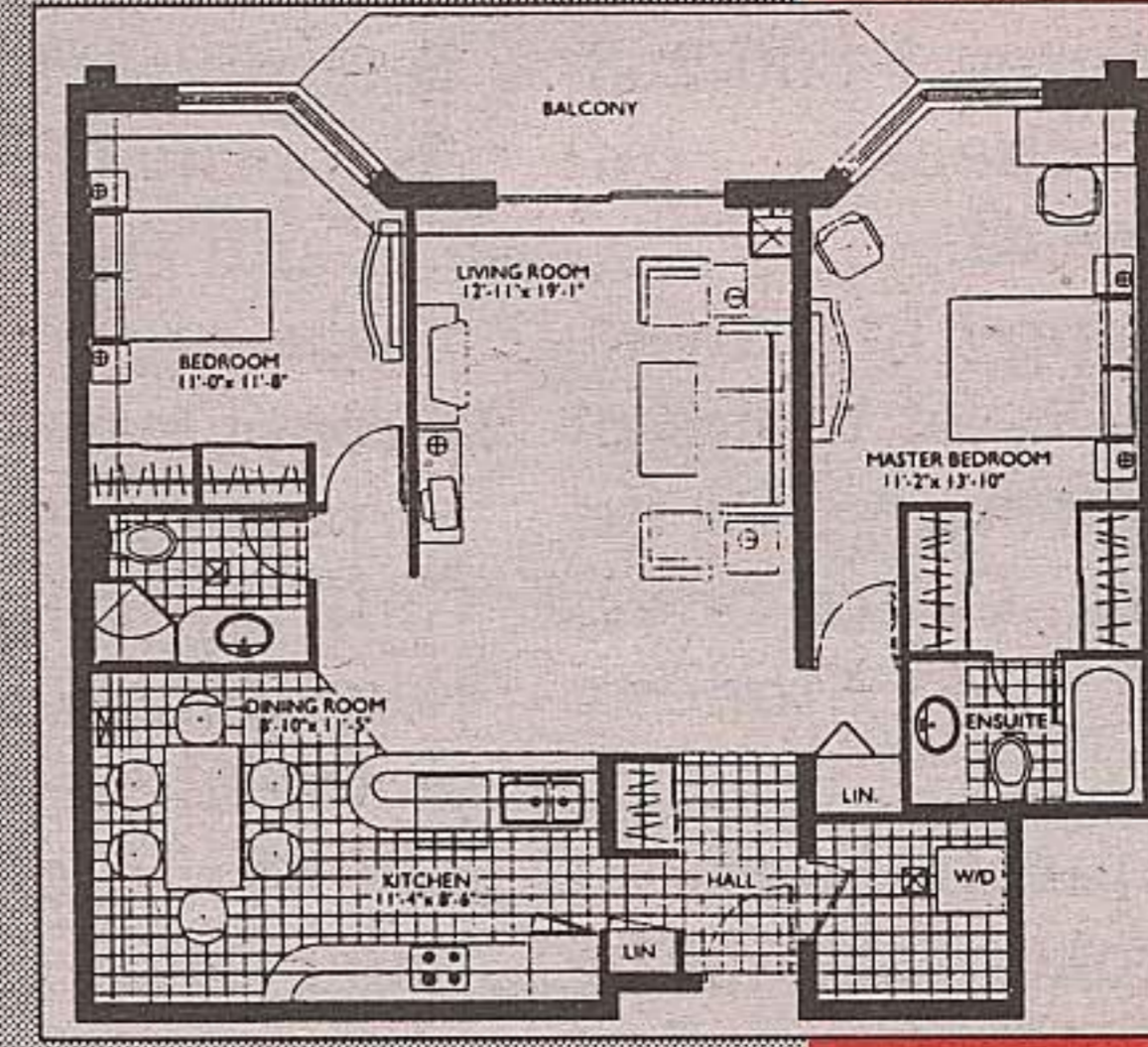
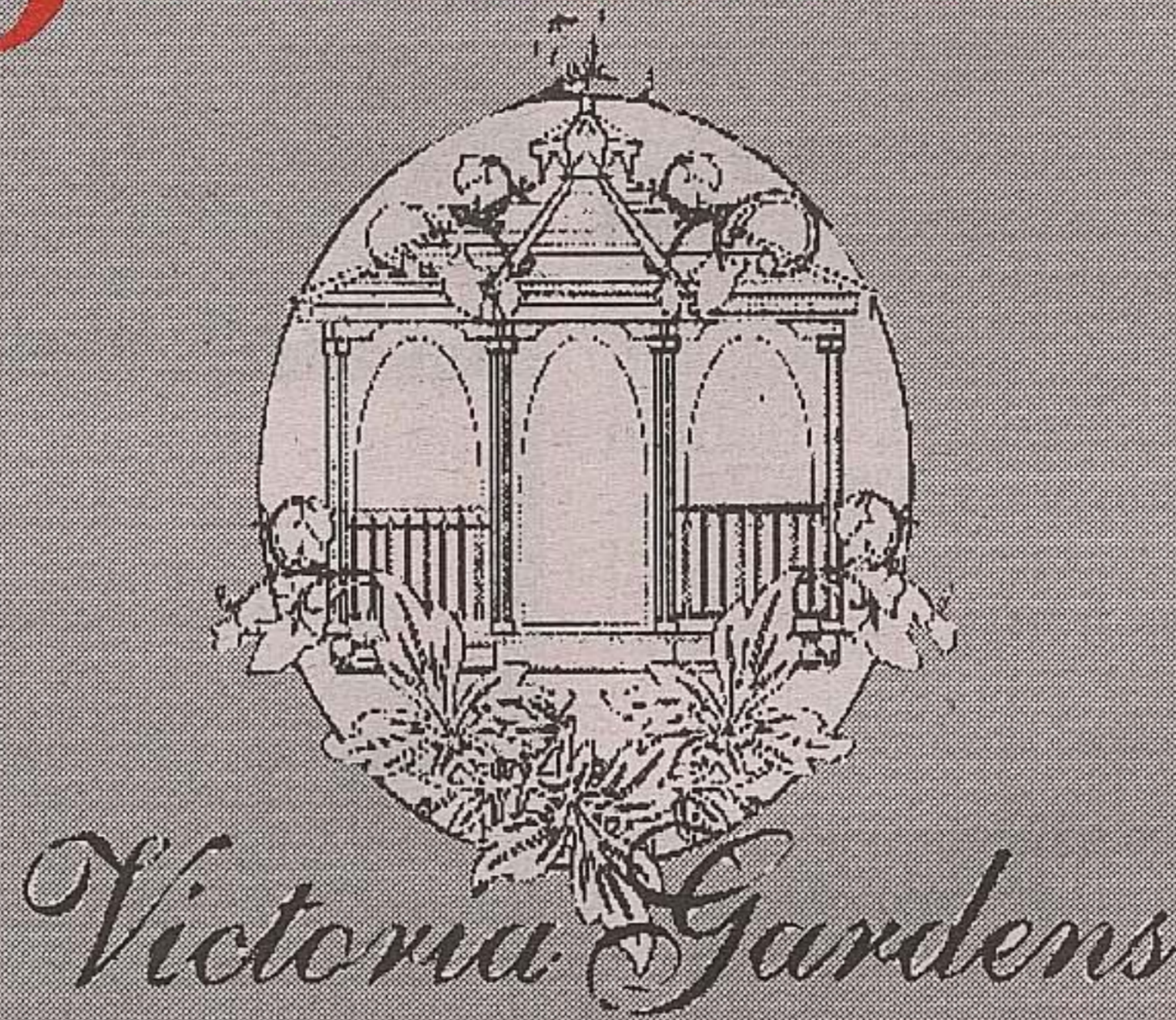
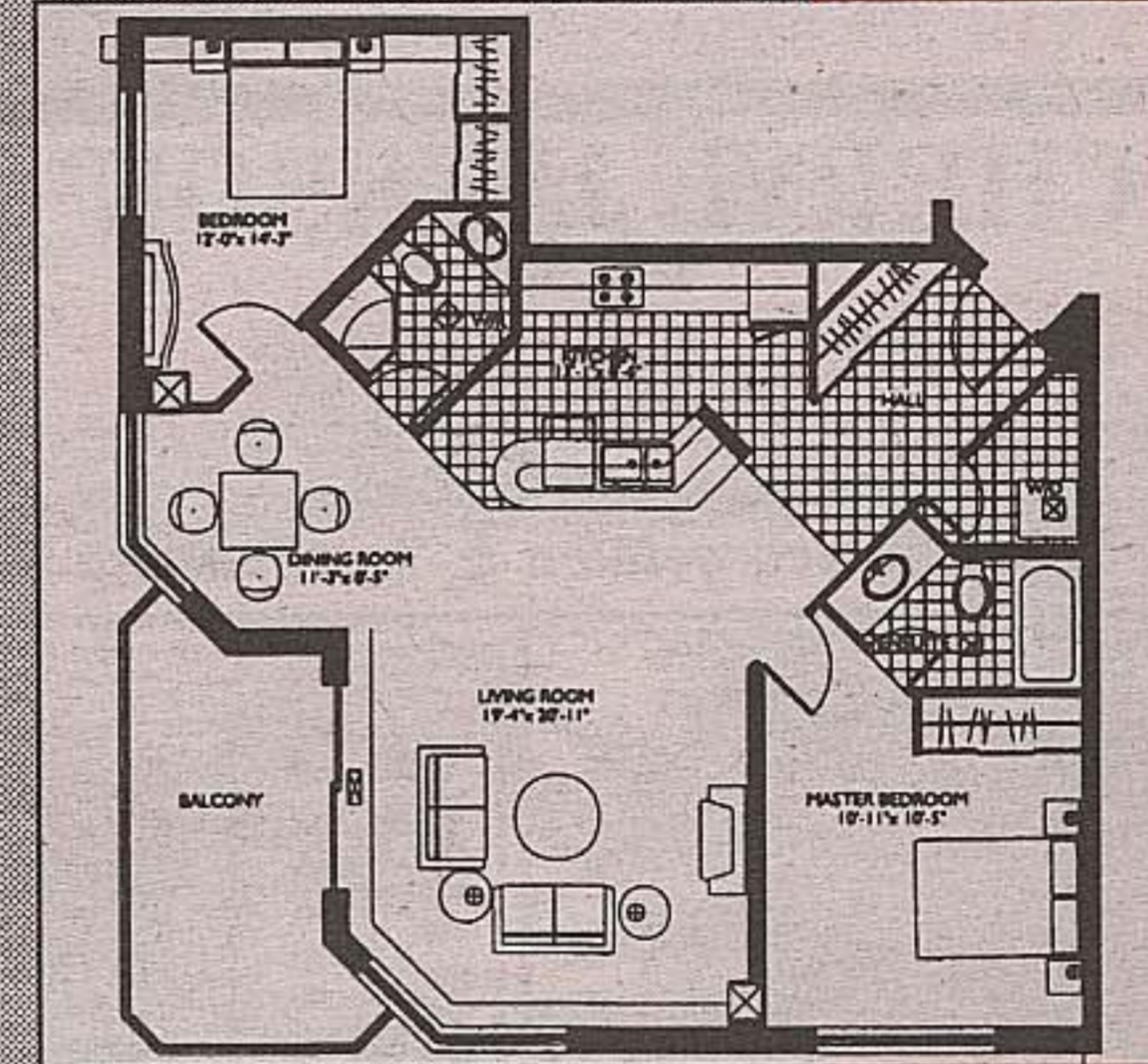


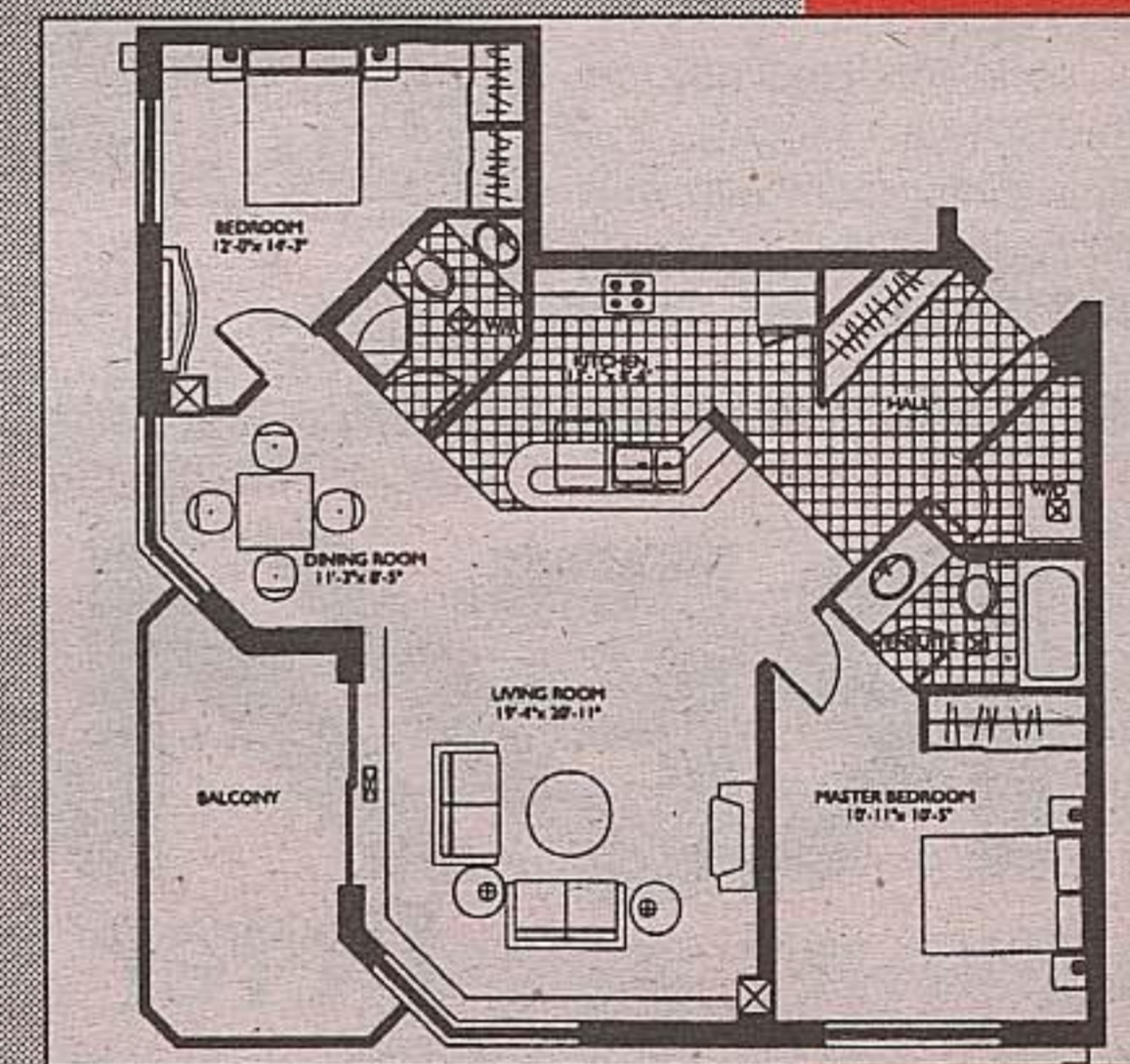
# Experience A Carefree Lifestyle At *Victoria Gardens*



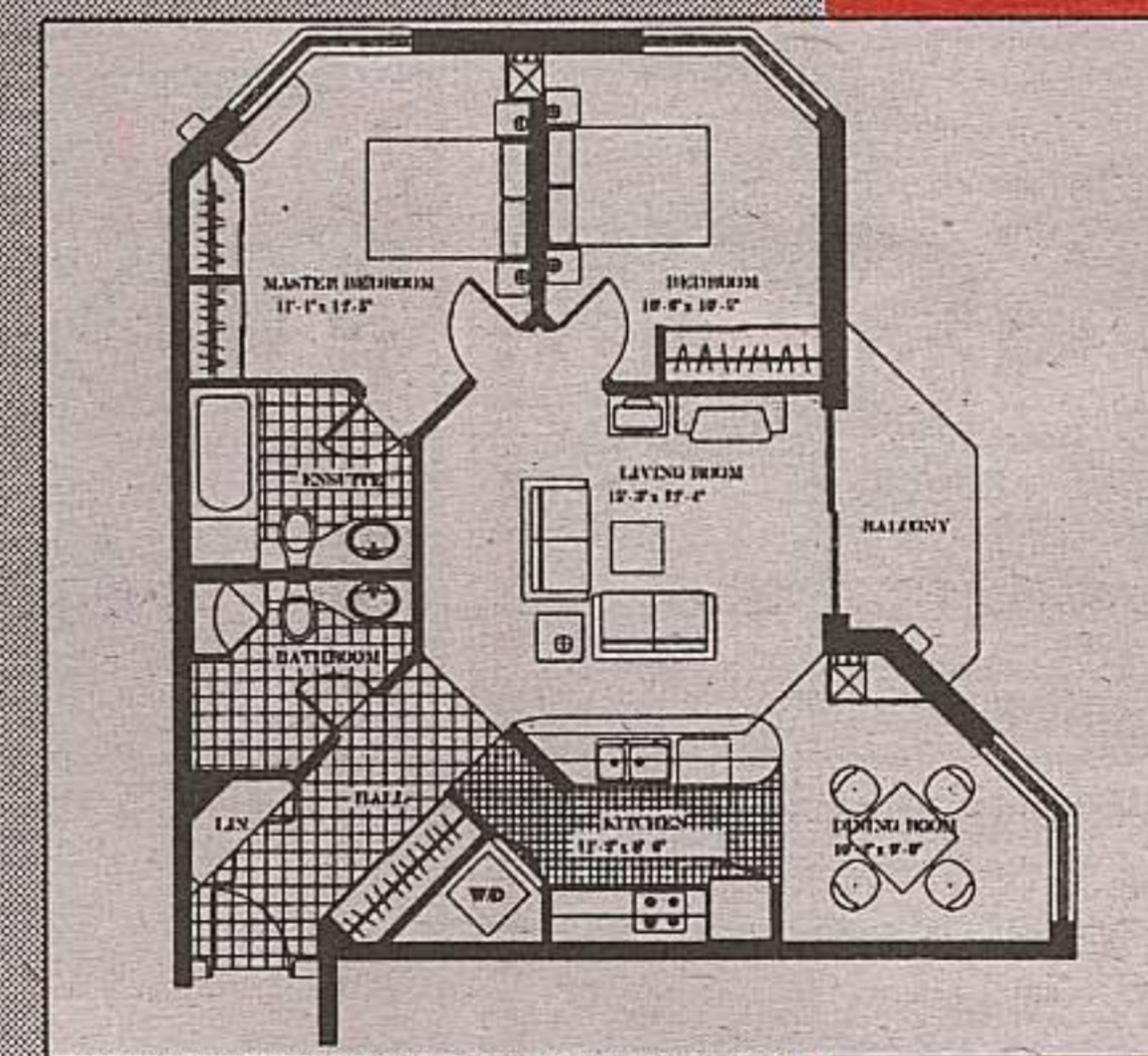
**Penthouse Eight**  
1,170 sq. ft.  
• 2 Bedroom  
• 2 Bathroom  
• Fireplace



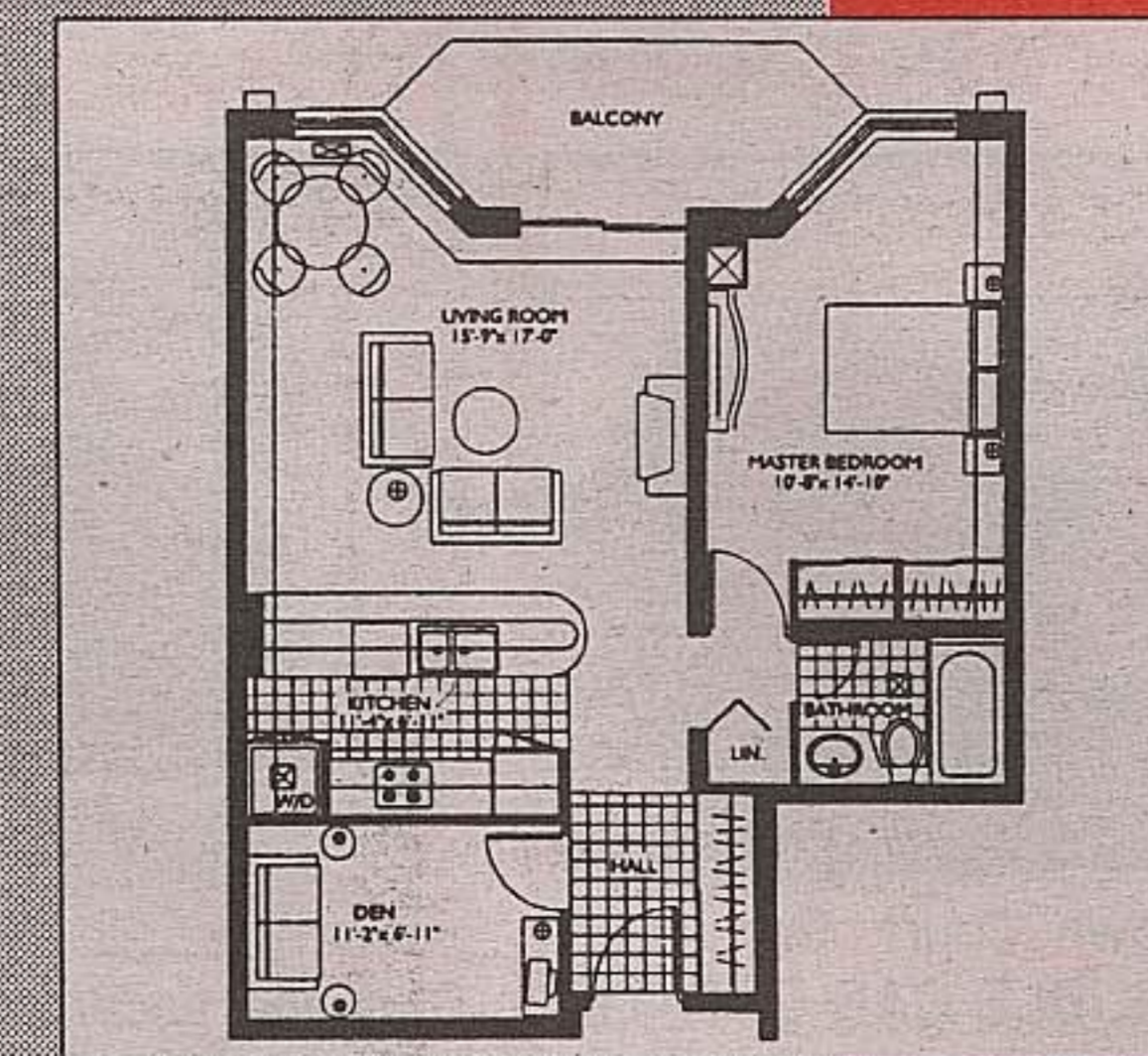
**The Coventry**  
1,100 sq. ft.  
• 2 Bedroom  
• 2 Bathroom  
Suite no. 201  
South Exposure



**The Swansen**  
1,100 sq. ft.  
• 2 Bedroom  
• 2 Bathroom  
Suite no. 310  
and 410



**The Paisley**  
950 sq. ft.  
• 2 Bedroom  
• 2 Bathrooms  
Suites nos. 306  
and 406



**The Dover**  
725 sq. ft.  
• 1 Bedroom  
with Den/Office  
Suites no. 408

## MEET THE BUILDER

**SATURDAY, SEPTEMBER 25, 1999**

**10 a.m. - 4 p.m.**

**43 Main Street South  
Georgetown**

**REFRESHMENTS  
SERVED!**

- 26 Luxury Condos in the heart of Georgetown
- Located at 24 Chapel Street (off Highway 7)  
(Best view behind the old arena)
- Occupancy Spring 2000 (March to April)
- Personal Interior Design & Selections  
Begin In October
- Visit our website - [www.GeorgetownCondos.com](http://www.GeorgetownCondos.com)  
to view floor plans

**Sales Office: Saturday 12-3 p.m. (or by appointment)**  
43 Main Street South, Georgetown

**YVAN DESJARDINS\*** Exclusive Agent \*Sales Rep.

### HURRY! HURRY!

**Only 1 Corner Unit facing south left - 3 Units with walkout to garden -  
5 3 Penthouse Suites Still Available**

OFFICE: 877-5211 **REMAX** BLUE SPRINGS REALTY (Halton) CORP.

**1-800-834-5516**