

MARTHA SUMMERS*

Sales Rep.

877-5165

874-3040 (Tor.)
(519) 833-9714 (Erin)

247 Guelph St.,
Georgetown



President's Circle
Award Winner

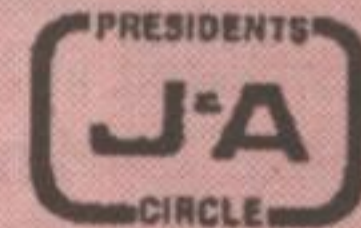
Performance Group
Member

1993 1994 1995

1996 1997 1998



Johnson Associates
HALTON LTD., REALTOR



"MARTHA SUMMERS= PROVEN PERFORMANCE"

Summer is here and we hope you have a safe and happy holiday!

Our market is still very strong - we are still getting multiple offers on properties and Purchasers are still looking to buy their perfect home. Please call now or later if we can be of assistance.

"Proven Performance Counts - Talk to a Proven Performer"



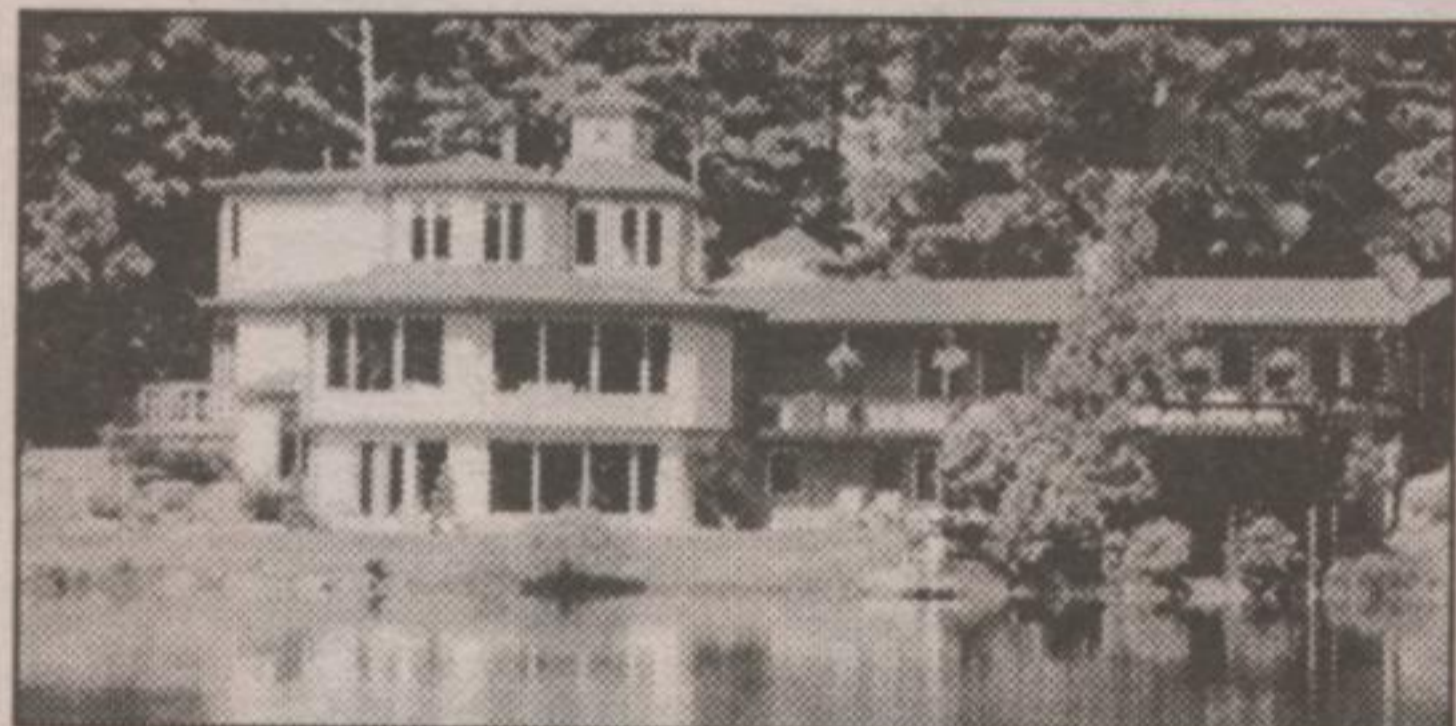
BE IN BY WINTER

The lot is ready and waiting, the 3 bay workshop is also ready and waiting - a great place to store your materials while you build. The well, driveway and hydro are in - a significant saving for anyone thinking of building! Great countryside close to Bruce Trail, and 12 min. to the "GO Station". \$154,900. **Martha Summers***. TYR-99



WATERFRONT IN ERIN!!

30 private acres with approx. 3 1/2 acres of your own ponds. Swim from the raft, fish, canoe and even jet ski on your private water. Sunfilled 3 bedroom with huge country kitchen with walkout overlooking water, main floor family room with vaulted beamed ceilings, fireplace and pine floors. Hardwood floors, ceramics, bay windows are only a few of the features. \$425,000. **Martha Summers***.



A VIEW FROM EVERY ROOM

Contemporary country living at it's best. View from home, room for family and friends on weekends, lots to do, swim, skate, fish or golf at nearby clubs, relax on the deck, walk in the woods and numerous garages for the car enthusiast. An entertainer's delight with a incredible gourmet kitchen plus separate serving kitchen. Privacy at it's best. \$799,000. **Martha Summers***. GOL-99



ROOM FOR THE IN-LAWS

Immaculate all brick bungalow on almost 3/4 acre park-like setting in Erin Village. Completely redone ready to just move in!! Oak kitchen, main floor family room, brick fireplace, and more. Lower unit with windows above grade with 2 bedrooms, eat-in kitchen and large living room attached two car garage plus separate workshop. Park-like grounds. Hurry \$219,900.

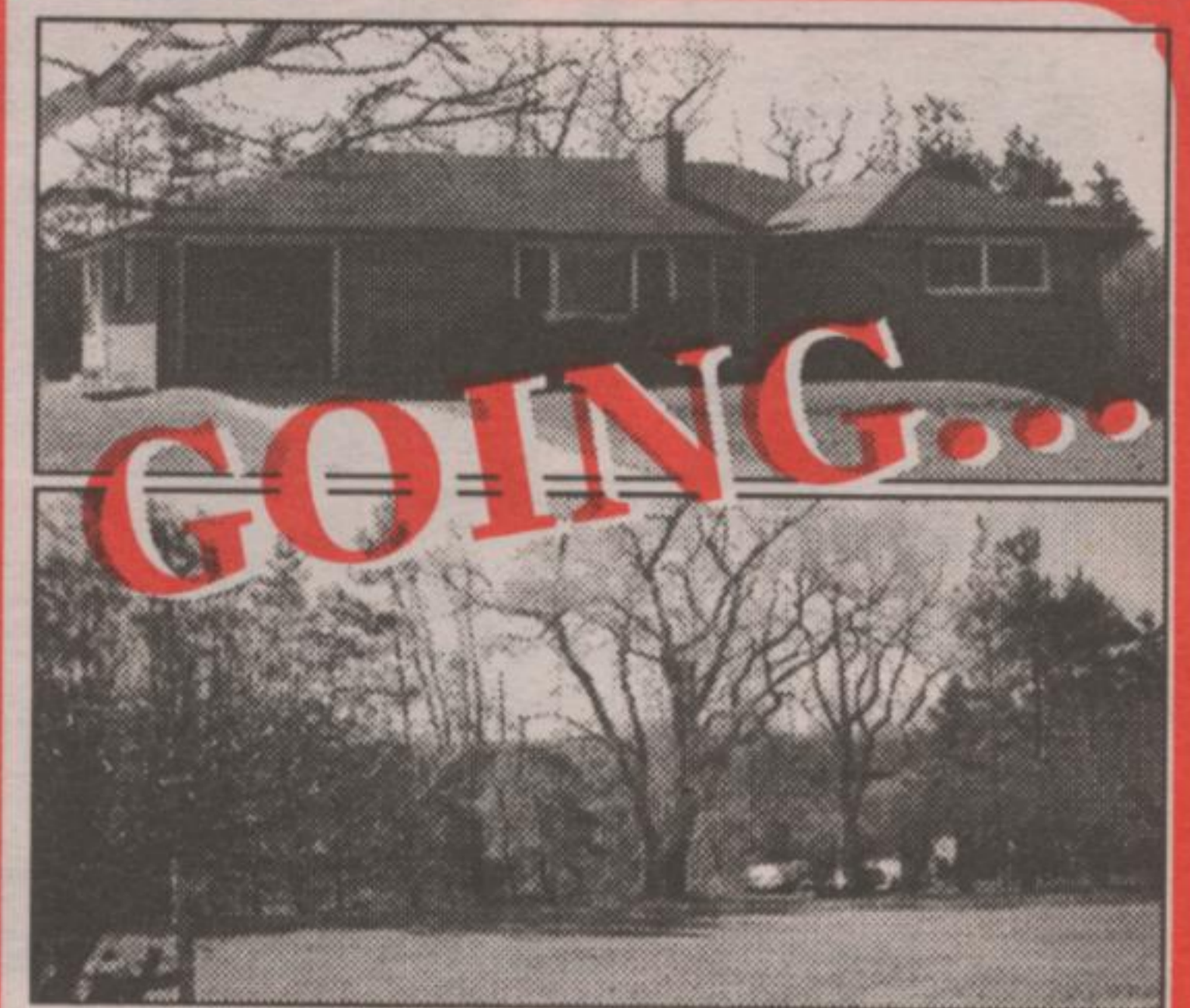


CHARMING IN THE PARK!!! \$208,000

You will be surprised at the size of this home situated between two streets with a super front yard. Pine floors, high ceilings, main floor family room or sun room walking out to deck. Separate dining room with french doors. Upgraded kitchen with walkout to second deck. Recent broadloom in the bedrooms and it shows to perfection!! Don't hesitate - this it it. **Martha Summers***.



A PARK SETTING IN BELFOUNTAIN \$189,000



GEORGETOWN COUNTRY CONVENIENCE \$239,900

One owner well maintained 3 bedroom with finished rec room. Stone fireplace, upgraded eat-in kitchen, hardwood floors in the bedrooms and a superb lot only 12 minutes to the 401 & 6 minutes to the "GO" station. 1 care attached garage with access to the basement. A great family home. **Martha Summers***. FEN-99



CHARMING 3 BEDROOM HOME

in great Brampton location. Walkout to deck from eat-in kitchen, finished basement with wet bar and 3 piece bathroom. Double garage, fenced yard and more. Better hurry it won't last long at \$199,000. **Martha Summers***.



PRESTIGIOUS BELFOUNTAIN LOCATION! \$389,000

Complete privacy on 3+ acres with recently updated 3 bedroom family home with 2nd floor turret room with views of Caledon countryside. Great for an office or additional bedroom. Open concept kitchen family room with stone fireplace with woodstone insert. Sunfilled living room/dining room with Berber type carpet. A find at this price. **Martha Summers***.



NATURE LOVERS AND BRUCE TRAIL ENTHUSIASTS TAKE NOTE!!

2 mature acres adjoining conservation lands (not park) just north of Glen Williams. Well maintained 3+2 bdrm with lots of windows to enjoy nature. Main flr. fam. rm with fireplace and walkout to deck with hot tub overlooking nature. Fabulous ensuite and a great family home in a great location. **Martha Summers***. \$309,900.



THE PERFECT START AT \$179,900



AFFORDABLE COUNTRY \$184,900



WOW - LOOK AT THIS LOT - FISHERMEN TAKE NOTE!!



"TO THE MANOR BORN"

Century charm abounds with hardwood floors, high ceilings, original trim and lots of upgrades including the kitchen and a fabulous 5 piece wash-room with whirlpool, sep. shower stall. Bay windows with views of the water and large garden area. Over 3/4 of an acre with sep. garage and hobby kennel all for \$305,000. **Martha Summers***.



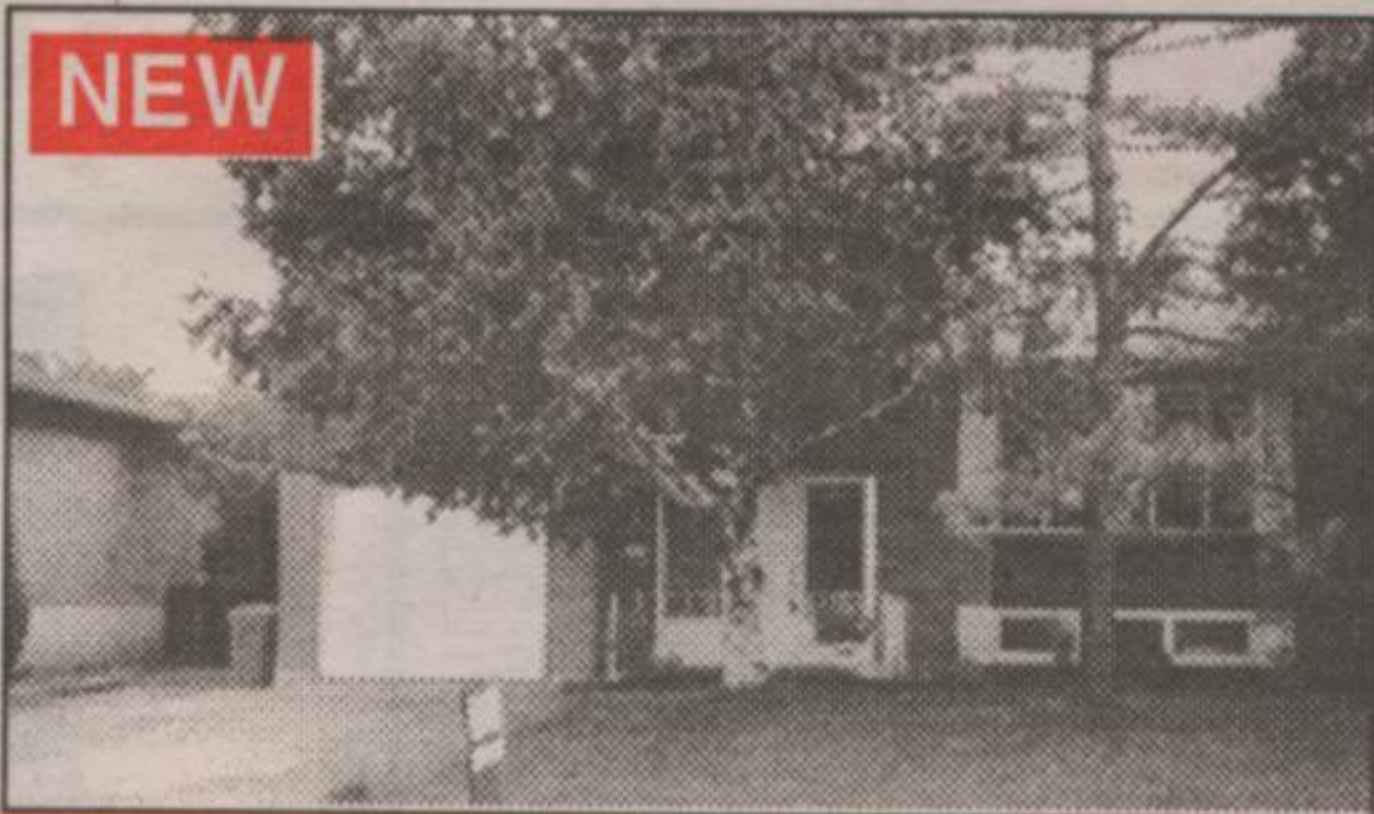
PERFECTION IN THE COUNTRY!! POOL INCLUDED!!

Fabulous 3+ bdrm home on 1/2 acre on dead end street minutes to the 401! Everything is done from the windows to the hardwood floors to the finished rec rm as well as the main flr fam rm with fireplace. Barzotti eat-in pine kitchen with walkout to large deck and pool area. Special - Special - Special at \$299,000. **Martha Summers***.



WATCH THOSE SUNSETS OR WALK TO THE GOLF COURSE!!

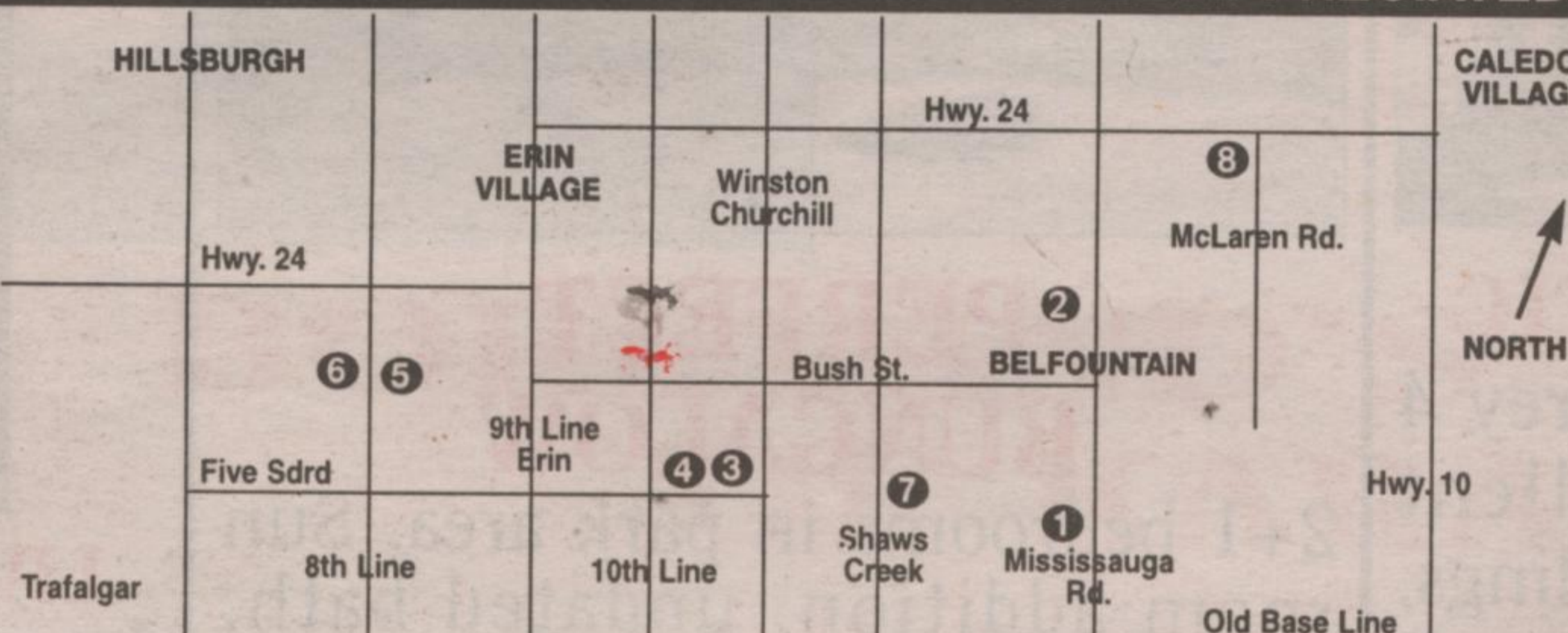
Sit on your deck overlooking the pool and hot tub, and look at the fall colours. Super family home with vaulted ceilings, skylights, double sided floor to ceiling brick fireplace and full lower level with washroom, walkout and large rec rm. Something special close to Village of Erin yet country. \$349,000. **Martha Summers***.



NEED MORE SPACE?

Great family home in desirable "Moore Park" area of Georgetown. Four good sized bedrooms, upgraded kitchen and bath. Gleaming hardwood floors. Walkouts from kitchen and main floor family room. Recreation room with wet bar and 3-piece bath. Bonus cantina with full height! All this and more for \$229,900. **Martha Summers***.

LAND AVAILABLE - TO BE WALKED - TO BE APPRECIATED



1. 95 rolling acres, trees, meadow stream - \$299,000.
2. 62 rolling acres - \$230,000. - NEW
3. 32 acres - views, pond potential - \$199,000. - SOLD
4. 2 acres - bush - \$70,000. - SOLD
5. 46 acres - bush, build ding envelope designated, driveway culvert is in - \$134,900.
6. 38 acres - bush, stream rises on the property - \$119,000.
7. 37 open acres - stream - \$219,000.
8. Near conservation & stream - 2 acres - \$59,000.

"MARTHA SUMMERS = PROVEN PERFORMANCE"